

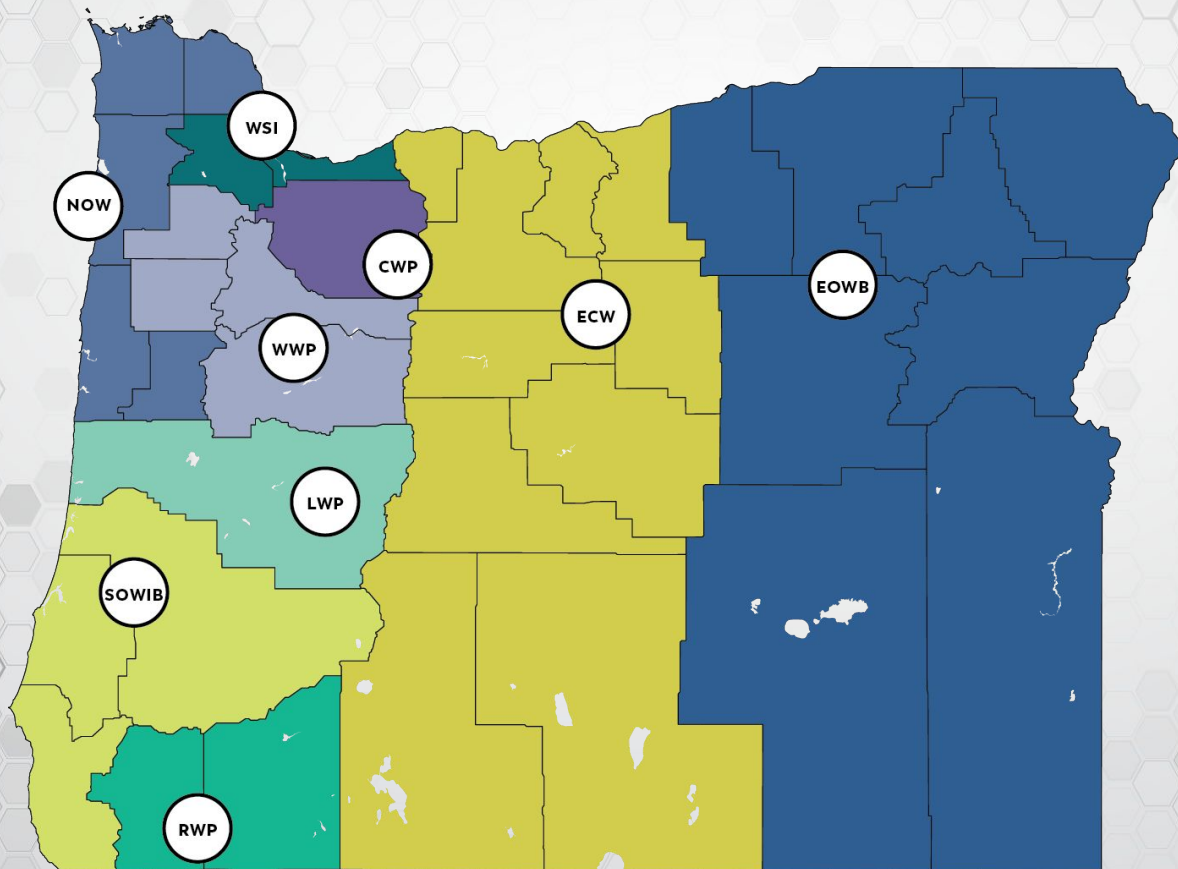
Support SB 1512

Sustaining Programs that Work



OREGON WORKFORCE
PARTNERSHIP
ADVOCATE | COLLABORATE | INNOVATE

LOCAL WORKFORCE BOARDS



RWP



ECW



NOW



LWP



WILLAMETTE WORKFORCE
PARTNERSHIP

WWP



EOWB



SOWIB



CWP

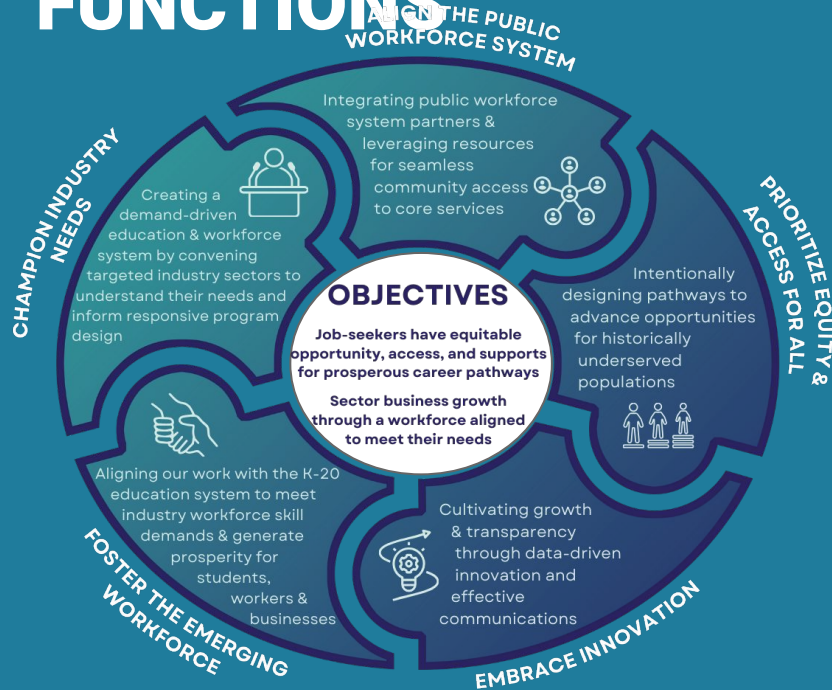


WSI

LOCAL WORKFORCE BOARDS

- Implementation and oversight of programs within designated region
- Investment of funds in training, education, and employment services
- Oversight of contracts with education and training providers
- Alignment of training/education services with employer/industry needs
- Creation of sector strategies to support and grow key industries
- Development of collaborative private/public/nonprofit partnerships

WORKFORCE BOARD CORE FUNCTIONS



- ▶ Funding & Resource Development
- ▶ Convener and Coordinator
- ▶ Advocate
- ▶ Contract Manager
- ▶ Accountability and Quality Assurance
- ▶ Oversight of Workforce System





50% Business and Private Sector



20% Labor and Apprenticeship



Education and Training



**Government, Economic, Community
Development**

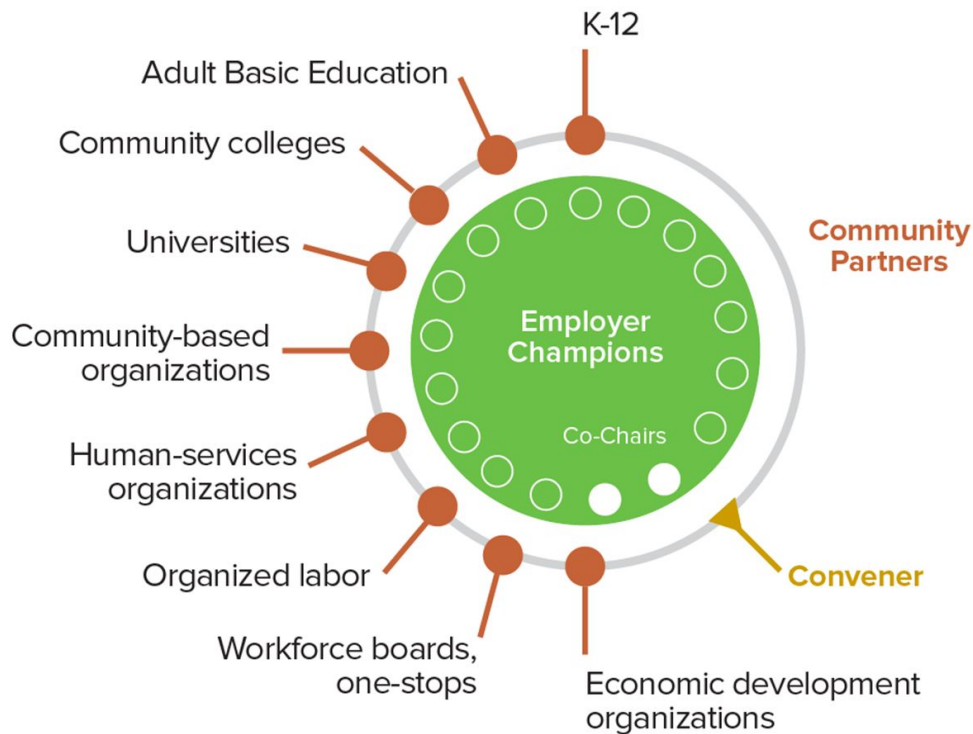
Plus, Other Category (Per CLEO)

**113 Private-sector
businesses sit on our
LWBs**

**We engage with an
additional 927
businesses in
high-growth, living-wage
occupations and
industries**

**Who sits at the decision table? | WORKFORCE BOARD
MAKEUP**

EMPLOYER-DRIVEN, COMMUNITY-SUPPORTED SECTOR PARTNERSHIPS



At the regional labor market level, a partnership of employers within one industry sector or cluster that work closely with government, education and training, economic development, labor and community organizations to focus on the workforce and other competitiveness needs of their industry.

Is the brand name and an umbrella term that refers to the statewide network of WorkSource Centers. It encompasses a variety of agencies/organizations who work collaboratively to deliver training, education, and employment services.

The WSO Provides local regions with resources that ensure standard processes and quality customer service.

<http://www.worksourceoregon.org/>

<https://www.qualityinfo.org/>

worksource | OREGON

americanjobcenter®

WHO DO THESE PROGRAMS HELP?

PEOPLE

- 14 or older
- Legally able to work in US
- First time jobseeker
- People changing jobs/careers
- People seeking new skills
- People seeking credentials/degrees
- People who have been laid-off
- People who are unemployed
- Returning neighbors

BUSINESS

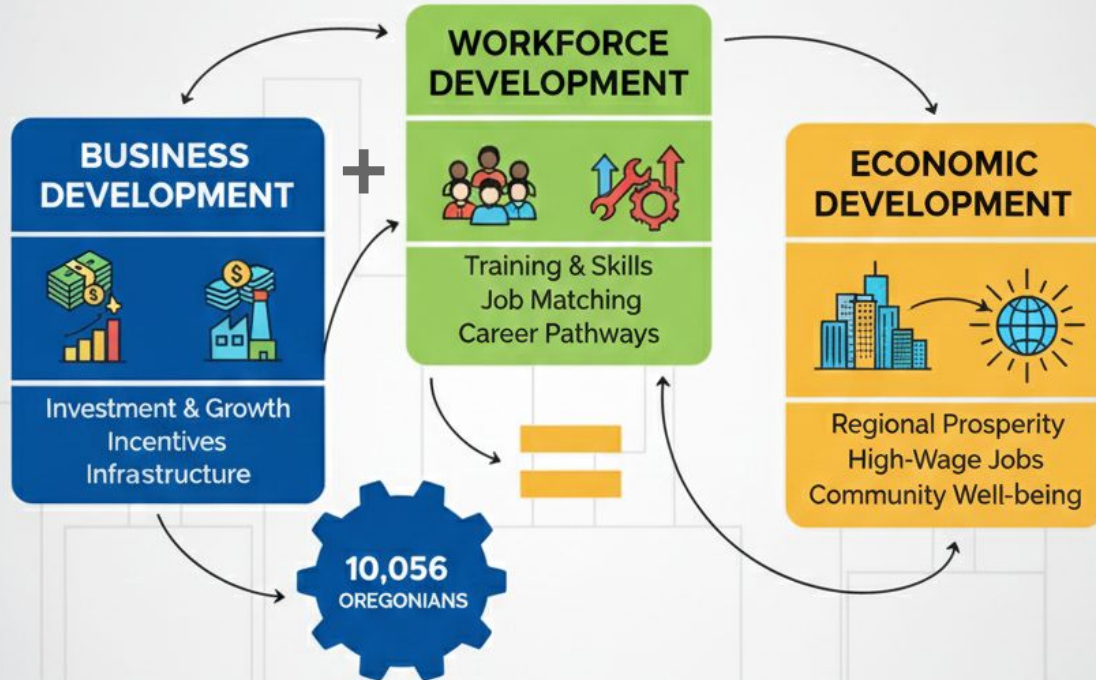
- Business Services includes:
 - Finding employees + access to new talent
- Retaining + advancing employees
- Business operations
- Labor market info + Data analysis
- From entrepreneurs to small businesses to industries – and everything in between

The Need for SB 1512

- Expiring State Resources
- Decreased Federal Investments
- Local Budget Challenges
- Rising Unemployment + Underemployment
- Rapid Economic Changes
 - Skills mismatch between workers & jobs
 - Artificial Intelligence & Automation
 - Global socio-political & economic shifts
- Oregon's *Roadmap to Prosperity*

Equation for Prosperity

**BUSINESS DEVELOPMENT + WORKFORCE
= ECONOMIC DEVELOPMENT**



A Proven Investment

Return on Investment: A \$35 million state investment has generated **\$219 million** in economic benefits, including **\$23 million** in new tax revenue and **\$195 million** in reduced social service costs.

10,566* Oregonians served through local workforce boards statewide.

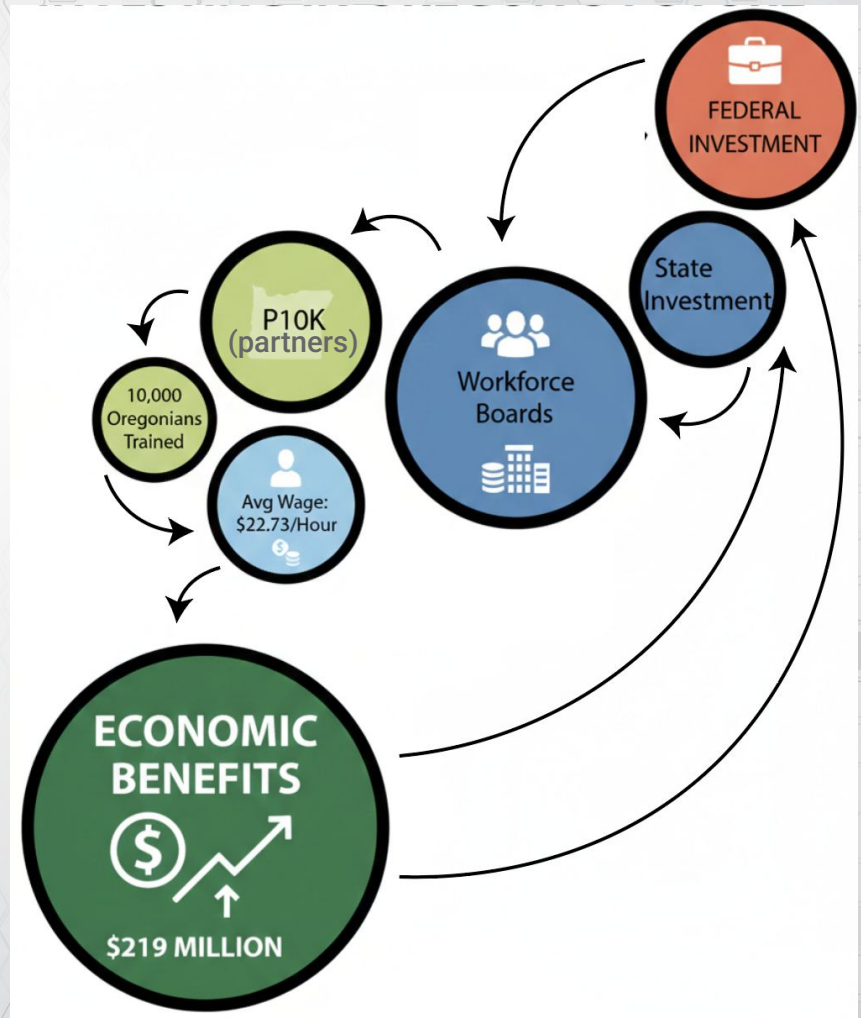
*At least 2829 had a barrier removed to employment

Family-wage outcomes: Participants earn an average of **\$22.73/hour**, with 72% working full-time.



For every \$1 Invested, Oregon gets \$2.98 back

- Prioritizes lasting careers over quick placements.
- Invests in specialized training that meets business needs
- Connects people to quality roles with family-supporting wages
- Career jobs with clear upward mobility
- Strategic alignment ensures sustained employment
- Strengthens the state's economy.



Strategies that Work!

Statewide Performance

Enrollment Goal – 10,000 people

Measure	Current Status	Goals
Enrollment to Date <i>Percent to Goal</i>	108%*	100%
*At least 2928 individuals were served by removing a barrier to employment		
Participants who successfully complete the program.	83%	80% of all Exited Participants
Participants who obtain employment.	70%	75% Participants exited, employed, not employed at reg.
Participants who earn at least \$17/hour.	88%	75% Participants exited, employed, not employed at reg.

Our Performance as of November 30, 2025

Success Stories

The Faces of Healthcare

Training paid for by

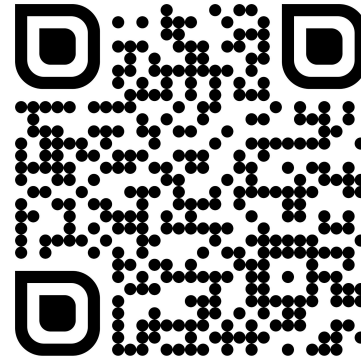
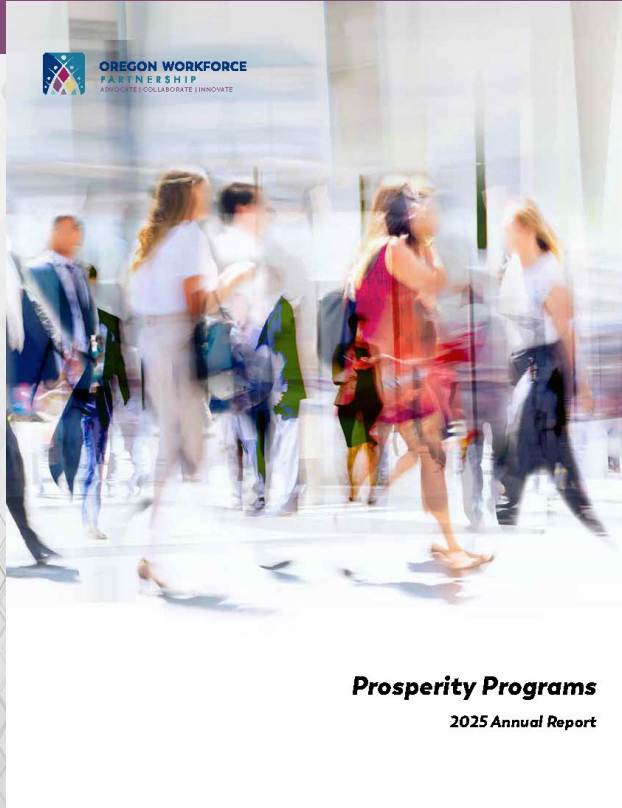


**WILLAMETTE
WORKFORCE**
PARTNERSHIP

Using Prosperity 10,000 funds



Third Party Evaluation by PSU



KEY FINDING #1

→ **50% real decline** in federal workforce development funding per capita to Oregon since **2016**

P10K investments are critical in addressing pandemic-related workforce and community needs, but also **long-term federal disinvestment** from workforce development programs.

\$11.35 per person invested in 2016 = \$6.66 today

KEY FINDING #2

→ **10,566 individuals** provided with employment and training services

→ **96%** of individuals were most **impacted by unemployment** and at risk of falling into **long-term dependance on public assistance.**

Local Workforce Development Boards invested P10K funding into **established and tested workforce programs**, as well as innovative programs to reach **underserved populations** and **community workforce needs.**

KEY FINDING #3

→ **83% successful program completion**

→ **73%** of jobseekers obtaining **employment after exit**

→ **85%** placed into jobs earning **\$17** per hour or **more: average wage is \$22.73.**

P10K enabled workforce providers to serve individual jobseekers more effectively by **reducing barriers to access** and allowing more **flexible service delivery**, leading to successful outcomes.

KEY FINDING #4

- **21 local workforce programs** and partnerships created or expanded across Oregon as a result of P10K
- **62%** of those programs in target sectors - **health care, manufacturing, transportation, IT, construction**

P10K has been an **important tool** for **strengthening** the capacity of local workforce development organizations to **respond and build collaborative partnerships** to address the changing workforce needs of their communities.

Pass this Bill SB1512

These funds reach
people we couldn't **find**
before, who are now
thriving and increasing
Oregon's tax base.

We urge the Legislature
to **invest \$15 million** in
the 2026 session to
sustain Prosperity
Programs and protect
Oregon's workforce and
economic momentum.



Supported By Many