

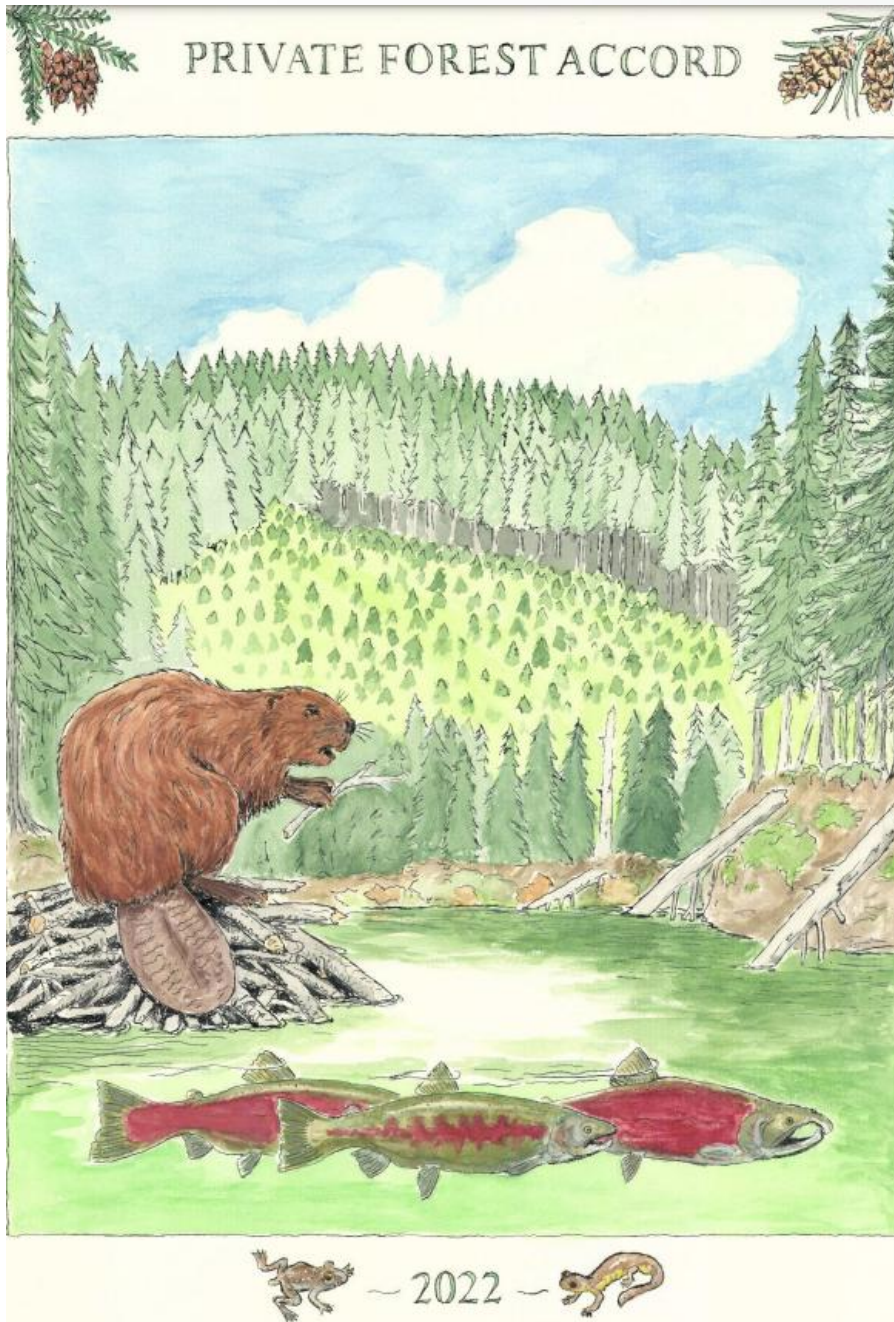
Presentation to the

**Joint Committee on Ways & Means
Subcommittee on Natural Resources**

Private Forest Accord Habitat Conservation Plan

February 11, 2026





Overview

- Background
- Implementation Status
- Private Forest Accord (PFA) Habitat Conservation Plan (HCP) Development
- PFA Programs
 - Adaptive Management Program
 - Small Forestland Investment in Stream Habitat (SFISH) Program

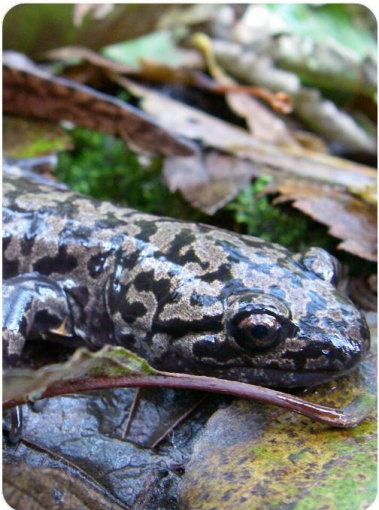


Implementation Status

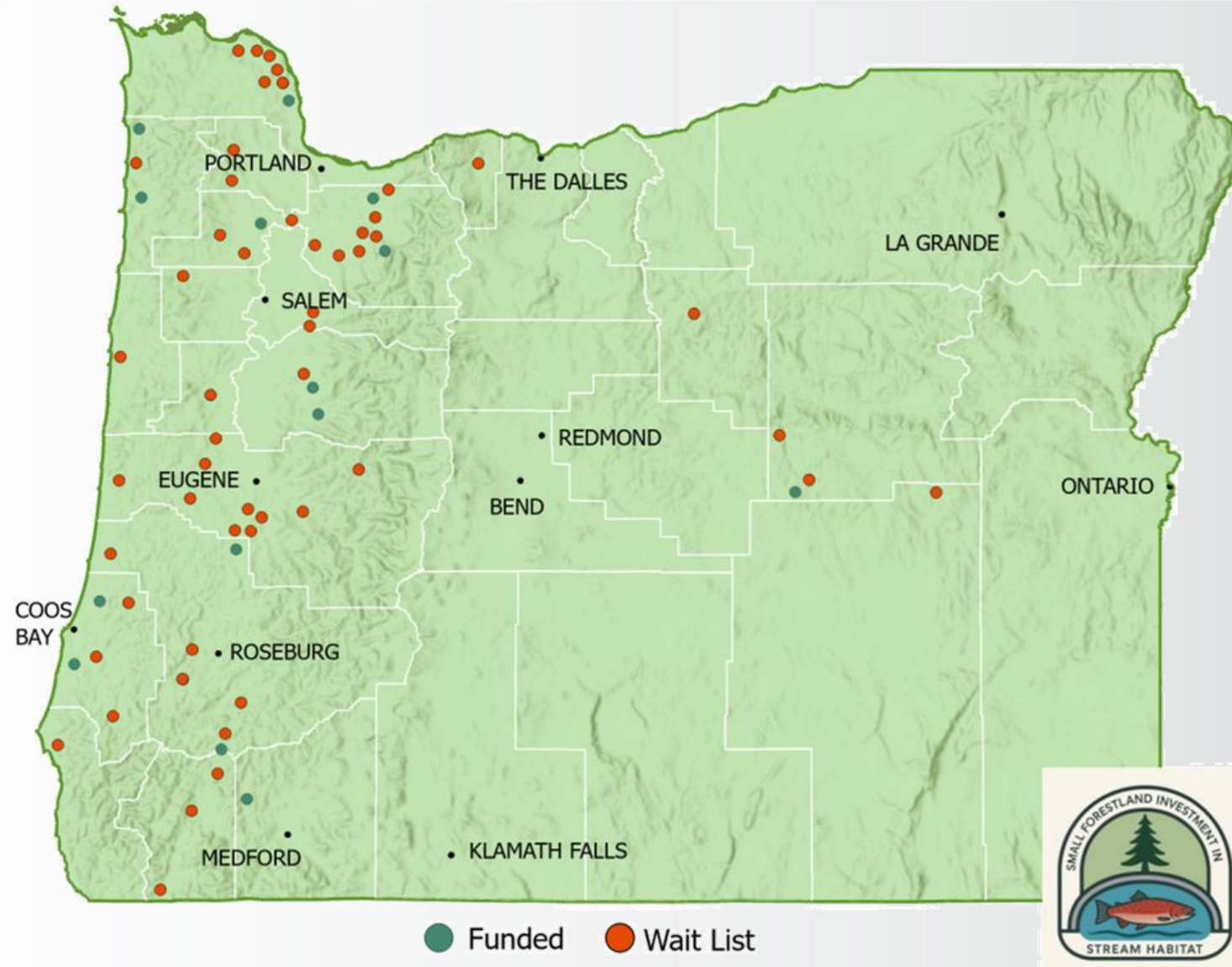
Statutory Requirement	Status	Deadline
Publish the PFA Report to the ODF website and ensure it remains publicly available	Complete/In Compliance	3/17/2022 to Indefinitely
Adopt a single rule package consistent with the PFA Report	Complete	11/30/2022
First appoint Adaptive Management Program Committee members	Complete	11/30/2022
Submit a proposed draft HCP	Complete	12/31/2022
Procure landslide modeling services and incorporate the model into the electronic notification system FERNS	Complete	5/1/2023
If needed, make minor amendments to single rule package	Complete	7/1/2023
Appoint the first voting members of the Independent Research and Science Team	Complete	Not Specified
Initiate tethered logging rulemaking	Complete	3/17/2025
Complete post-disturbance harvest rulemaking	Complete	11/30/2025
Report implementation progress to legislative committees	In Compliance	Annually
Post a report on the Small Forestland Investment in Stream Habitat (SFISH) program to the ODF website and submit a copy to the appropriate legislative committee	In Compliance	Annually no later than 9/15
Coordinate with the Oregon Department of Fish and Wildlife to prioritize SFISH projects on high conservation value sites	In Compliance	Indefinitely
Conduct compliance inspections on completed forest operations	In Compliance	Indefinitely
Report to the legislative committees whether ITPs were issued by 12/31/2027 & if a petition was received from a PFA Report author	Not Started	2/1/2028 or earlier

PFA HCP Development

- What is an HCP?
- What is an Incidental Take Permit?
- What will the Incidental Take Permits Cover?
- What are Conservation Strategies?
- Where are we in the process?
- Update on coordination with the federal services and what's next.



Small Forestland Investment in Stream Habitat (SFISH) Grant Program Projects



Adaptive Management Program Priorities

Research Topic	Focus of Research Questions
Roads	<p>Base line status of hydrologic connectivity of roads including differences by land ownership and region and how site characteristics and road rules contribute to connectivity. Trends in the status of hydrologic connectivity over 5-year intervals and the effectiveness of road rules at removing hydrologic connectivity.</p> <p><i>Note: Hydrologic connectivity is direct routes of drainage or overland flow of road runoff to streams.</i></p>
Eastern Oregon Steep Slopes	<p>Impacts of hillslope processes on species in the HCP and their habitats in Eastern Oregon and the extent to which forest practices impact those processes.</p> <p><i>Note: Hillslope processes are the movement of earth and soil down a slope. For example, rock falls, landslides and debris flows.</i></p>
Amphibians	<p>Distribution of each amphibian species in the HCP and what factors determine distribution at a smaller spatial scale. The population trend of the Columbia and Southern torrent salamanders over time on lands subject to forest practice rules.</p>



PFA Program Funding

- Small Forestland Investment in Stream Habitat (SFISH) Program
 - 2023: \$6.67 Million one-time GF allocation
 - 2025: \$2 Million one-time GF allocation and \$7.7 Million OF authorization
- Adaptive Management Program
 - 2023: \$4 Million one-time GF allocation with ~\$3 Million dedicated to research projects
 - 2025: \$4.5 Million one-time GF allocation with ~\$3.1 Million dedicated to research projects
 - Estimated costs of current research projects:
 - Roads: \$5.4 Million
 - Eastern Oregon Steep Slopes: \$80,000
 - Amphibians: TBD