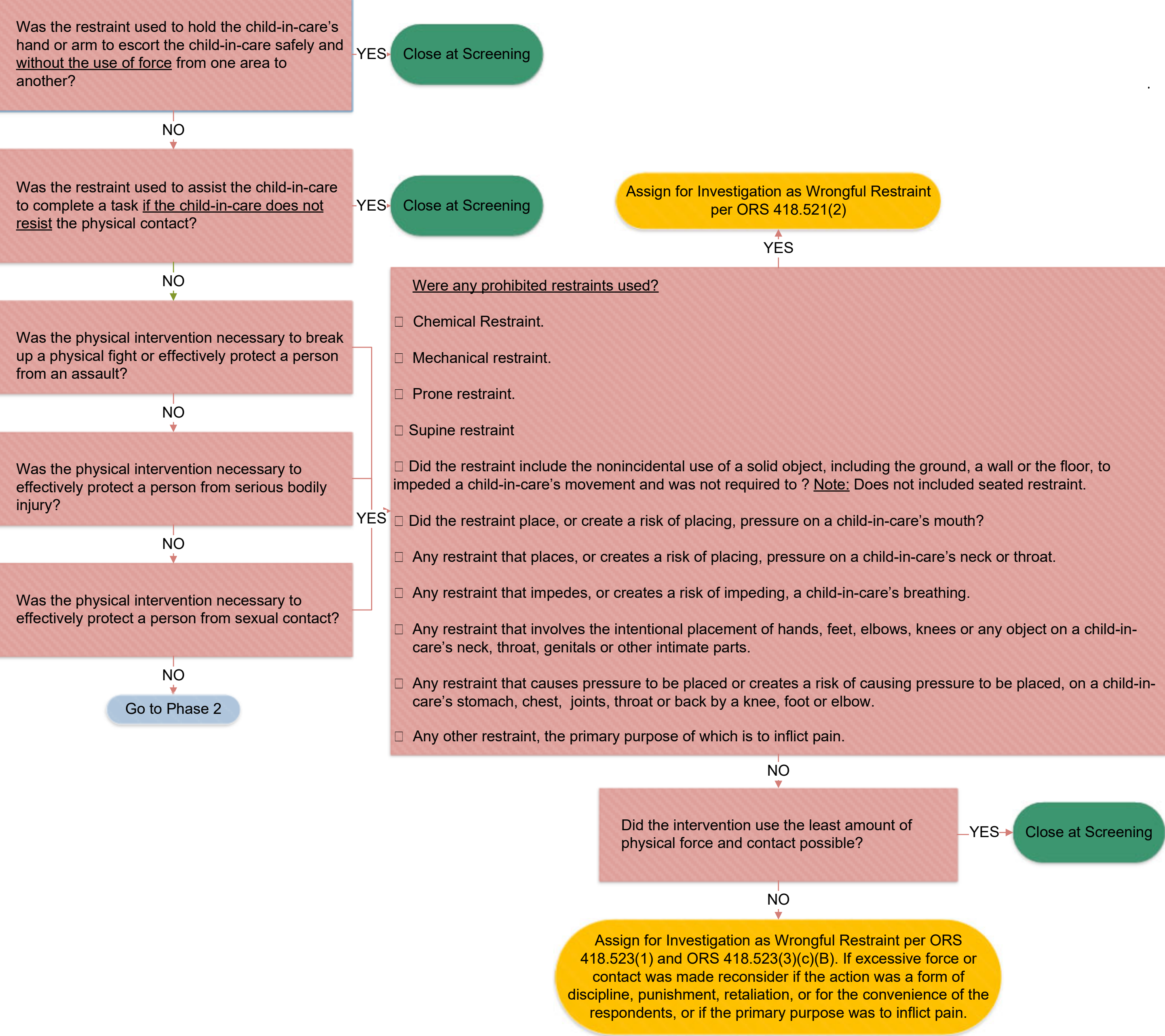


Report of Possible Wrongful Restraint

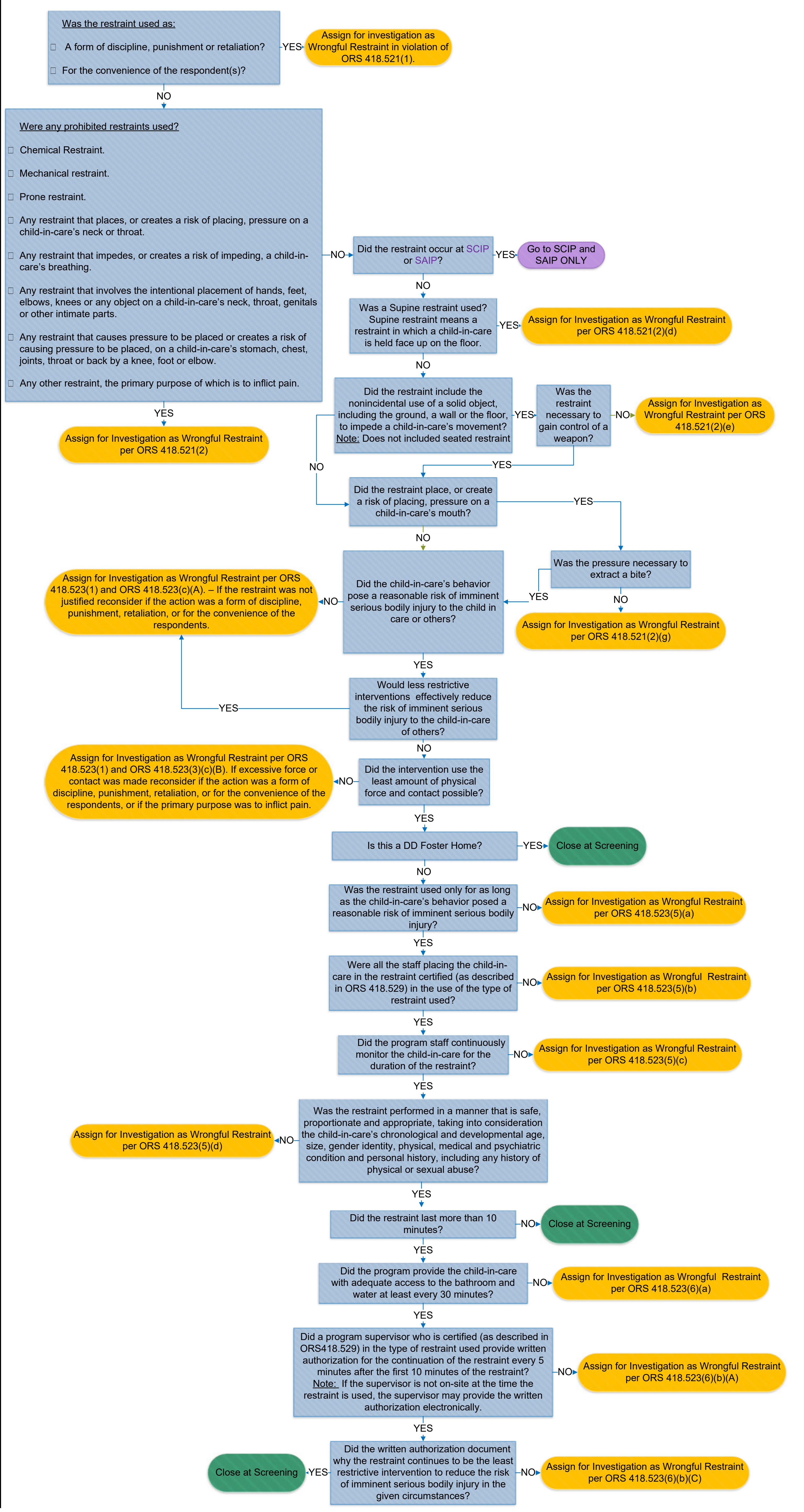
PHASE ONE



DEFINITIONS

Definitions for terms used in the flowchart: Chemical restraint, Children's emergency safety intervention specialist, Mechanical restraint, Prone restraint, Restraint, Secure adolescent inpatient treatment program (SAIP), Secure children's inpatient treatment program (SCIP), Serious bodily injury, and Supine restraint.

PHASE TWO



SCIP and SAIP ONLY

