

# Expanding Deflection Pathways: Opportunities and Challenges

---

Christopher Campbell, PhD

*Subject Matter Expert for Technical Assistance Team led by Oregon Health Science University*

*Director of the Criminal Justice Policy Research Institute (CJPRI)*

*Associate Professor of Criminology & Criminal Justice, Portland State University*

Presented to the Joint Committee on Addiction and Community Safety Response

Criminal Justice Commission Summit

March 7, 2025

# Overview

1. Current deflection pathways
2. Barriers to more participants in current pathways
3. Other pathways to expand
4. Challenges to expanding pathways
5. Technical Assistance can help



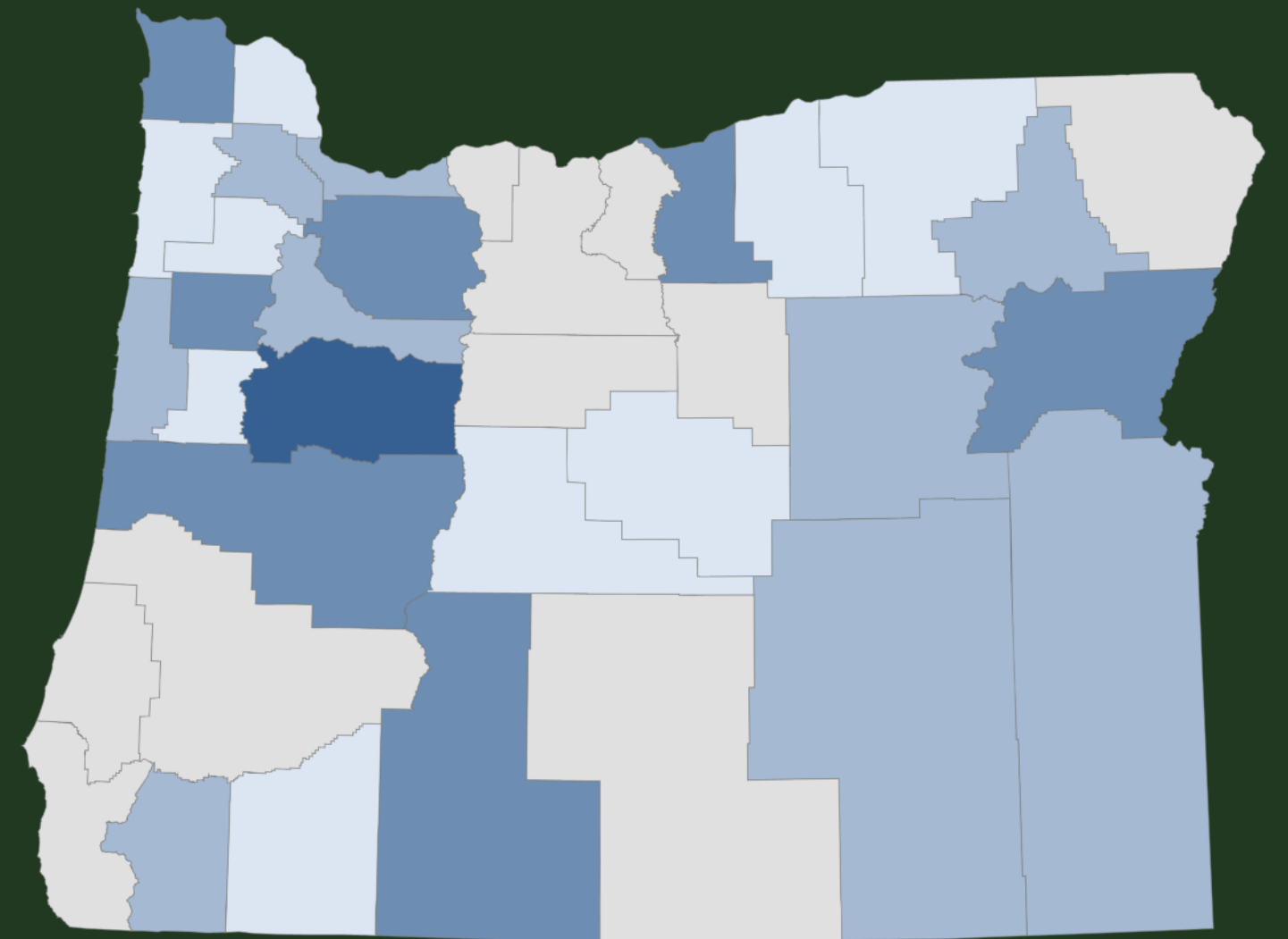
# Oregon's Current Deflection Efforts

CJC reported 27 jurisdictions use/planning deflection

All involving 2 pathways – 18 with multiple referral efforts, sometimes with other pathways

Program Breakdown as of January, 2025

Referral effort types 1 4



**Officer Intervention (overwhelming majority)**

REFERRAL TO CASE WORKER / SERVICES WITH CHARGES HELD IN ABEYANCE

**Officer Referral / Prevention**

OFFICERS ENCOUNTER PEOPLE IN NEED DURING ROUTINE ACTIVITIES – NO ARRESTS MADE

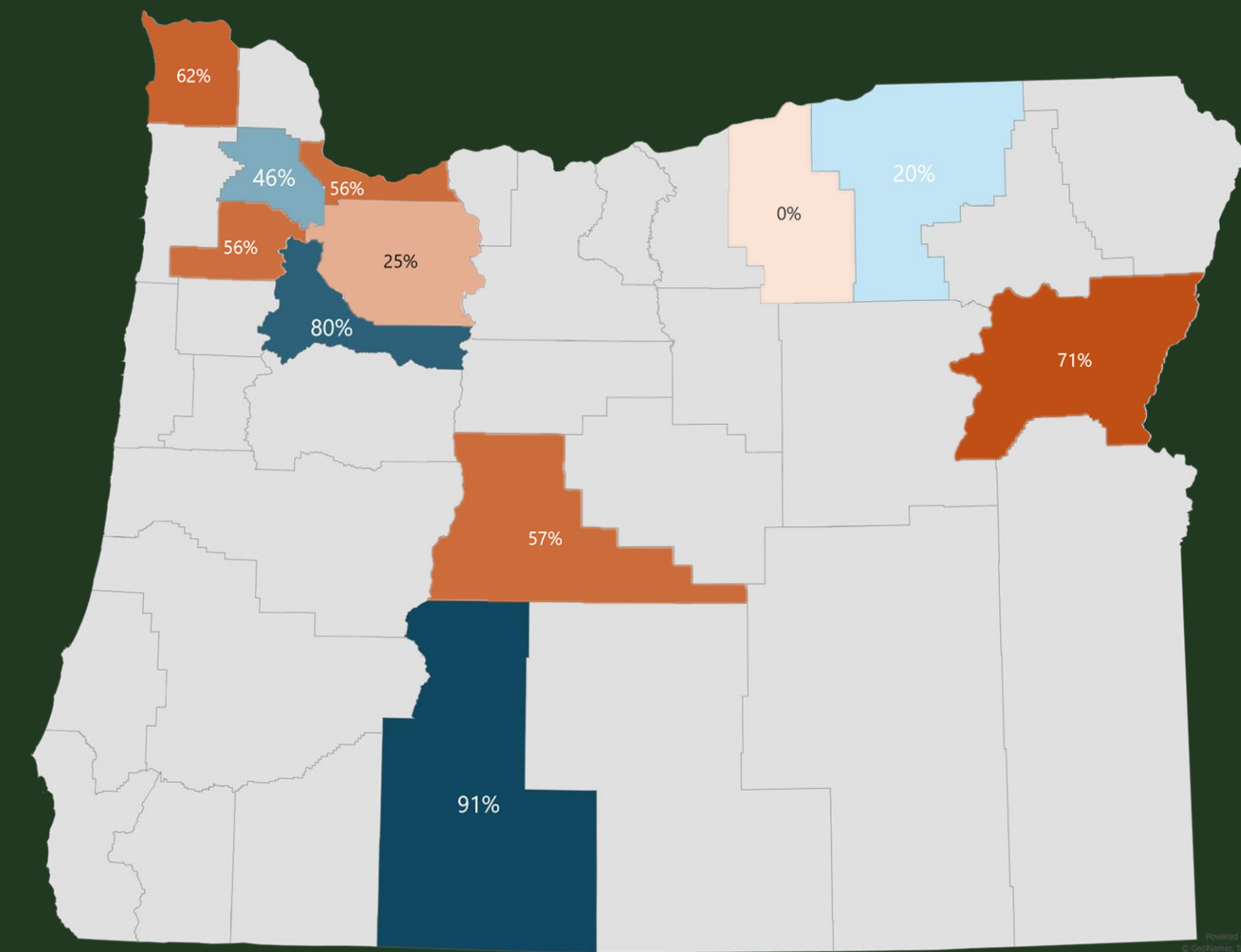


# Barrier: Officer buy-in & Eligibility

Across all 27 deflection efforts there have been roughly 900 referrals in 7 months

707 among 11 programs that began in Sept., 2024

- 51.5% of 1,372 possible deflection events (PCS-only arrests + referrals)
  - 665 not deflected, but could have





# Barrier: Officer buy-in & Eligibility

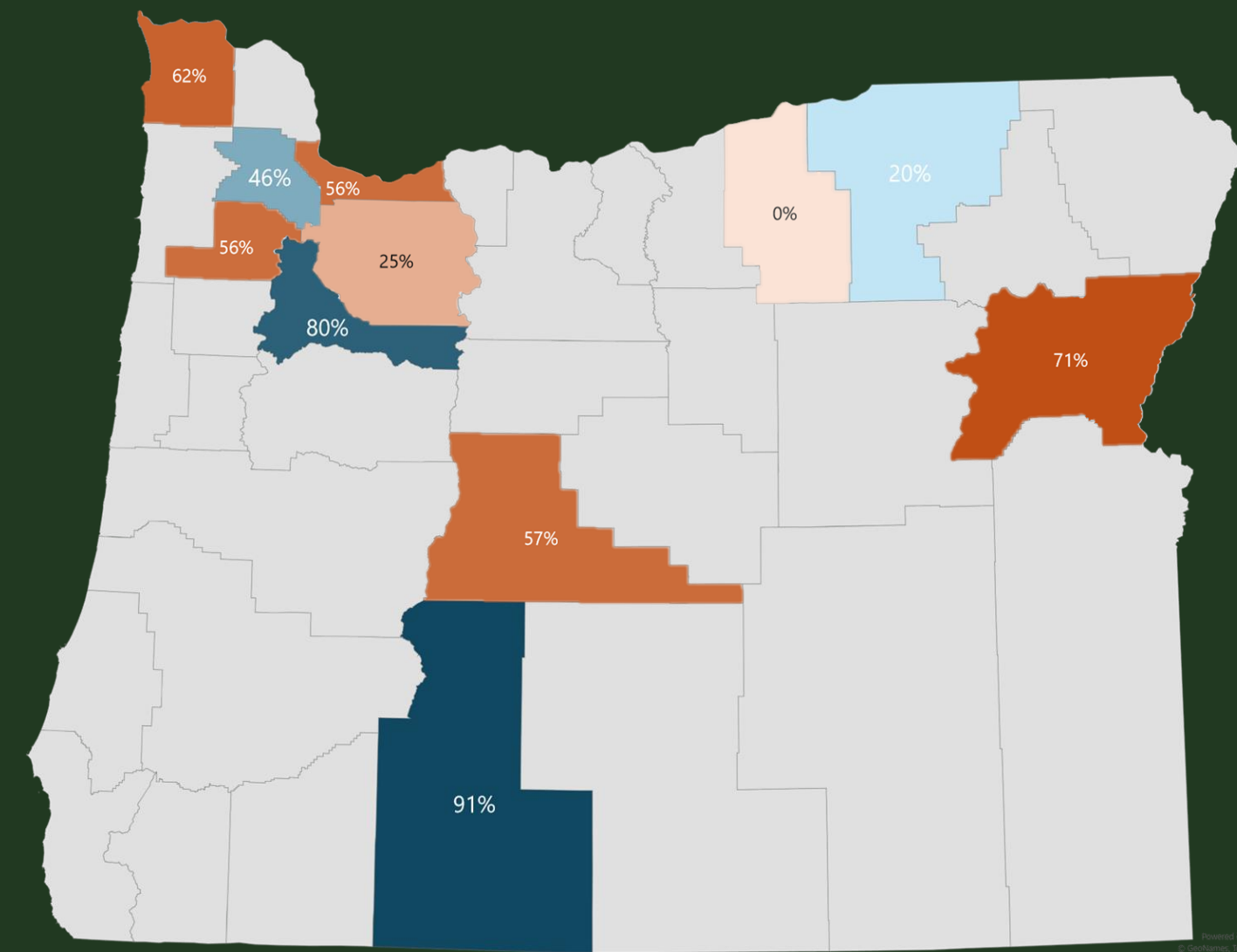
Across all 27 deflection efforts there have been roughly 900 referrals in 7 months

707 among 11 programs that began in Sept., 2024

- 51.5% of 1,372 possible deflection events (PCS-only arrests + referrals)

- 665 not deflected, but could have

← Possible officer buy-in issue

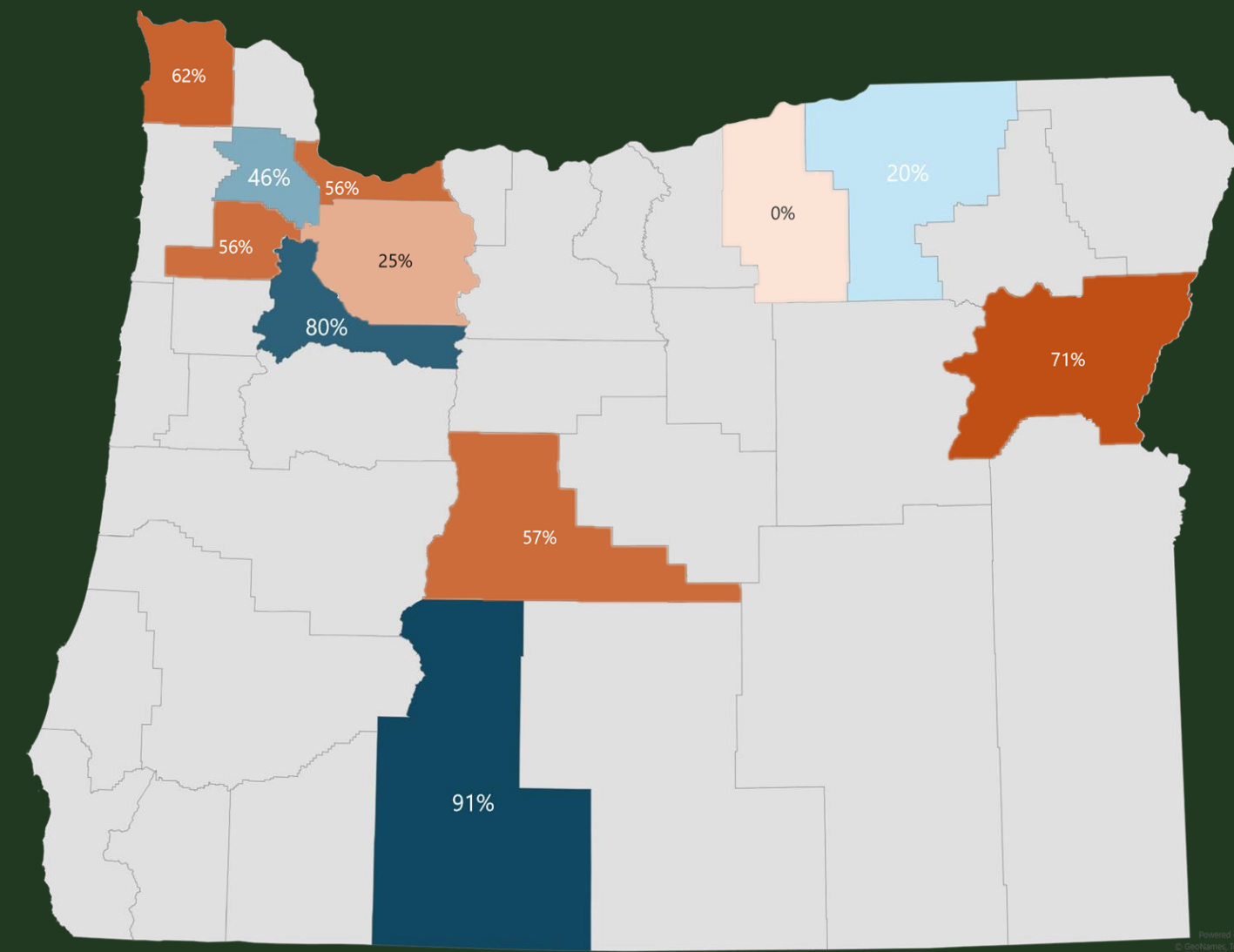


# Barrier: Officer buy-in & Eligibility

Across all 27 deflection efforts there have been roughly 900 referrals in 7 months

707 among 11 programs that began in Sept., 2024

- 51.5% of 1,372 possible deflection events (PCS-only arrests + referrals)
  - 665 not deflected, but could have ← Possible officer buy-in issue
- 25.4% of 2,787 possible expanded deflection events (PCS + co-charge arrests + referrals)
- If eligibility included top 4 co-charges (Trespass II, FTA II, Theft II, supervision violations)
  - 1,476 not deflected, but could have

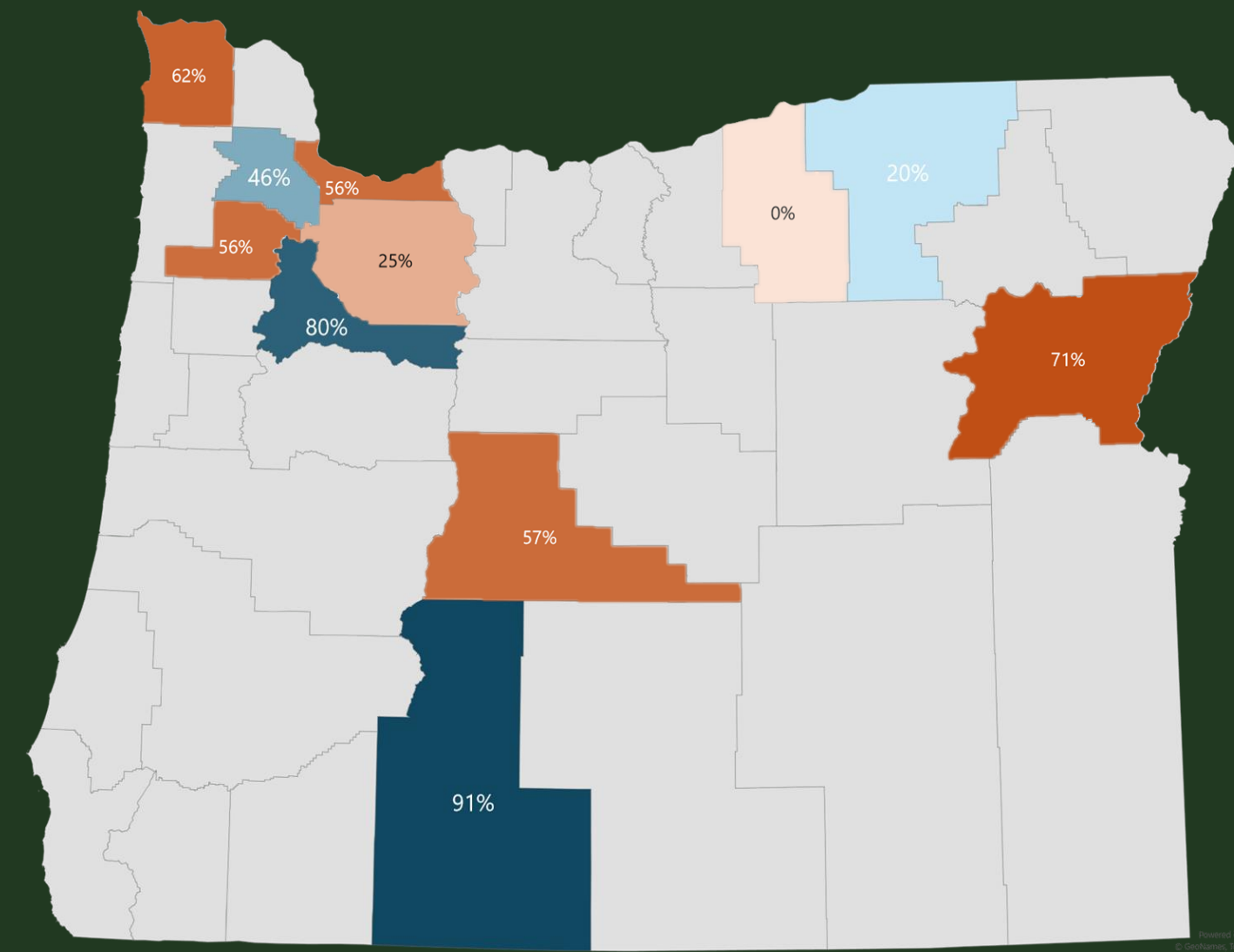


# Barrier: Officer buy-in & Eligibility

Across all 27 deflection efforts there have been roughly 900 referrals in 7 months

707 among 11 programs that began in Sept., 2024

- 51.5% of 1,372 possible deflection events (PCS-only arrests + referrals)
  - 665 not deflected, but could have ← Possible officer buy-in issue
- 25.4% of 2,787 possible expanded deflection events (PCS + co-charge arrests + referrals)
- If eligibility included top 4 co-charges (Trespass II, FTA II, Theft II, supervision violations)
  - 1,476 not deflected, but could have ← Eligibility issue

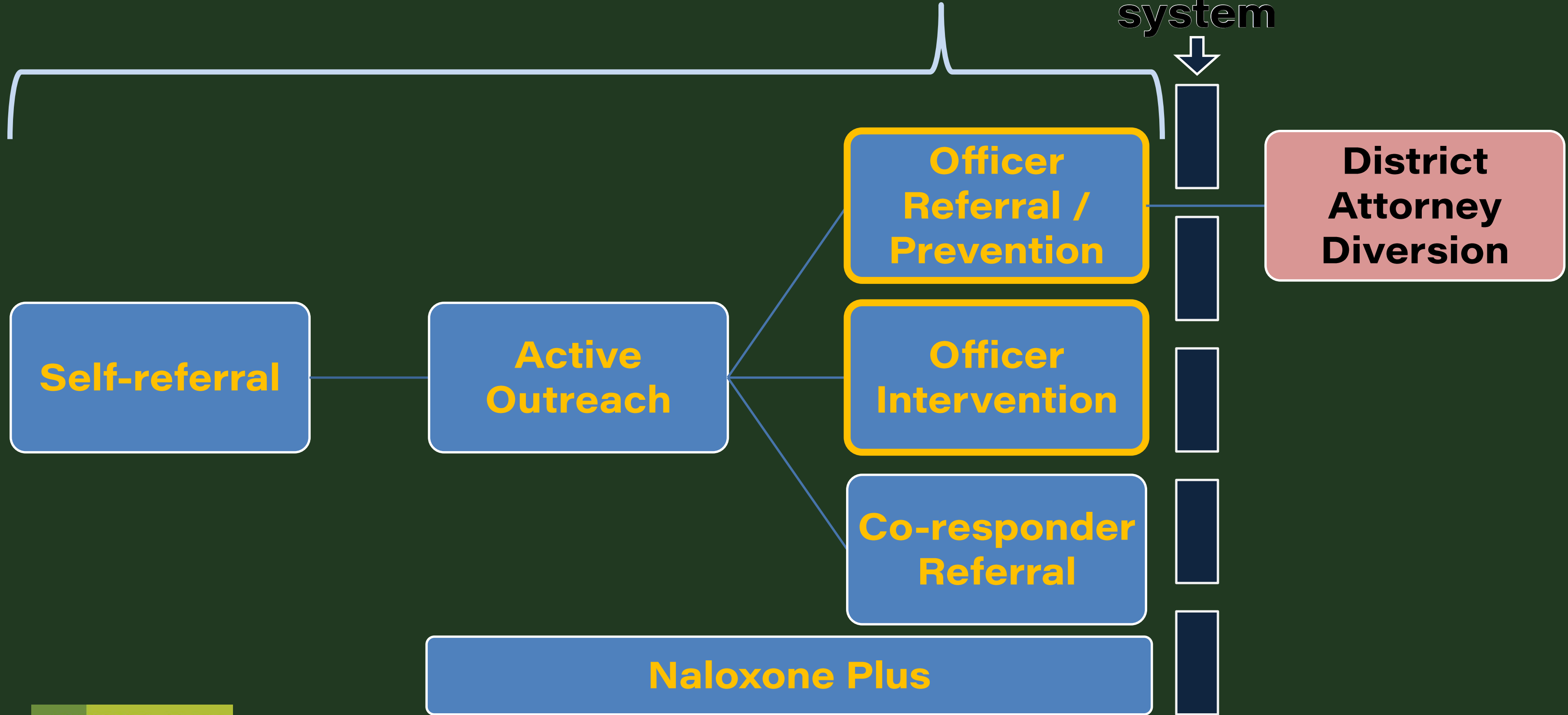


# Opportunities: 6 pathways to treatment

- 1. Self-referral** ← *Used by 53% of 321 organizations surveyed* “Drop-in” location(s) without fear of arrest
- 2. Active Outreach** ← *Used by 48% of programs* Deflection: Team initiation talking to and taking people to what they need
- 3. Naloxone Plus** ← *58% of programs (most common)* Deflection: 3-4 person team initiation, First responder, social work/recovery experts
- 4. Officer Prevention** ← *Used by 55%* Deflection: Officer initiation, no arrest, taken to drop-off center, or field handoff
- 5. Officer Intervention** ← *Used by 32%* Pre-arrest diversion: Officer initiation, referred to service provider if not public risk
- 6. Co-responder** ← *Used by 51%* Deflection: Team initiation, officers respond to calls with peer-support specialists/ recovery coaches



Deflection can occur anywhere **prior** to **invoking the system**



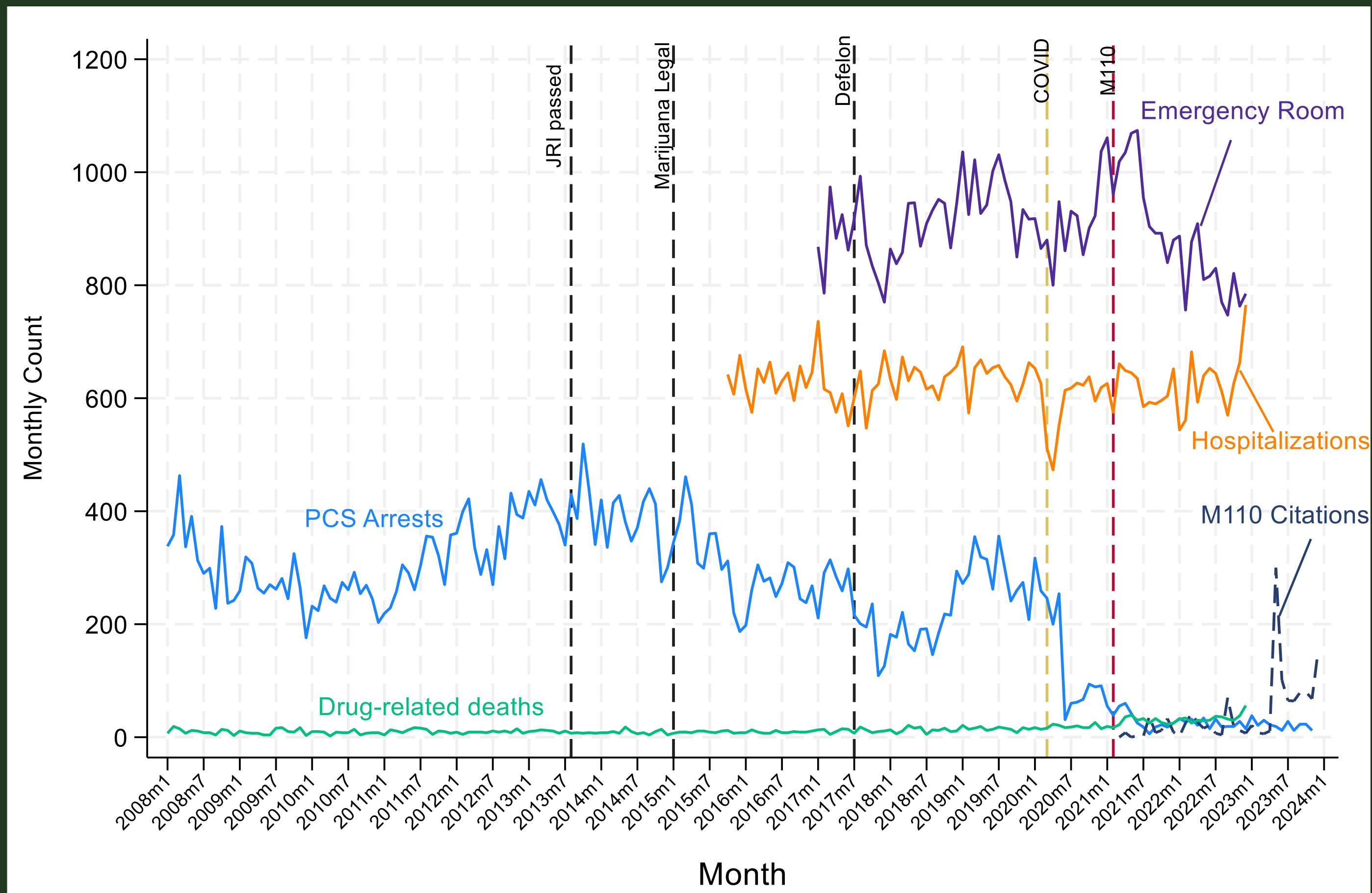


# **Example: How could this look in Multnomah County?**



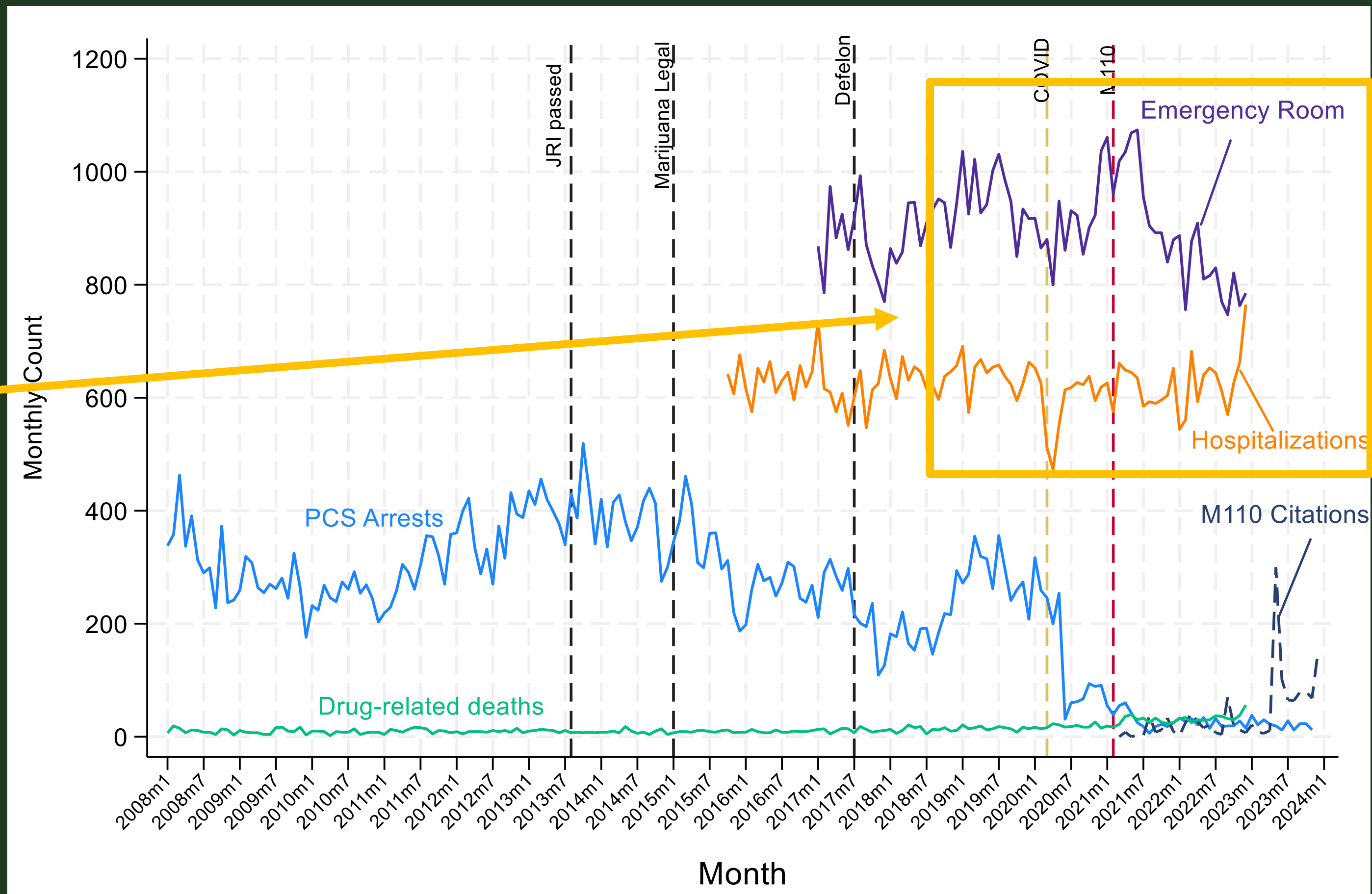
# Likely target population in Multnomah County?

Data from LEDS, OHA, and OJD shows potential target population for deflection



# Likely target population in Multnomah County?

Potential populations who could be receptive to **Pathways 1 (self-referral) and 3 (Naloxone plus)** are those who recently engaged with the health care due to drugs

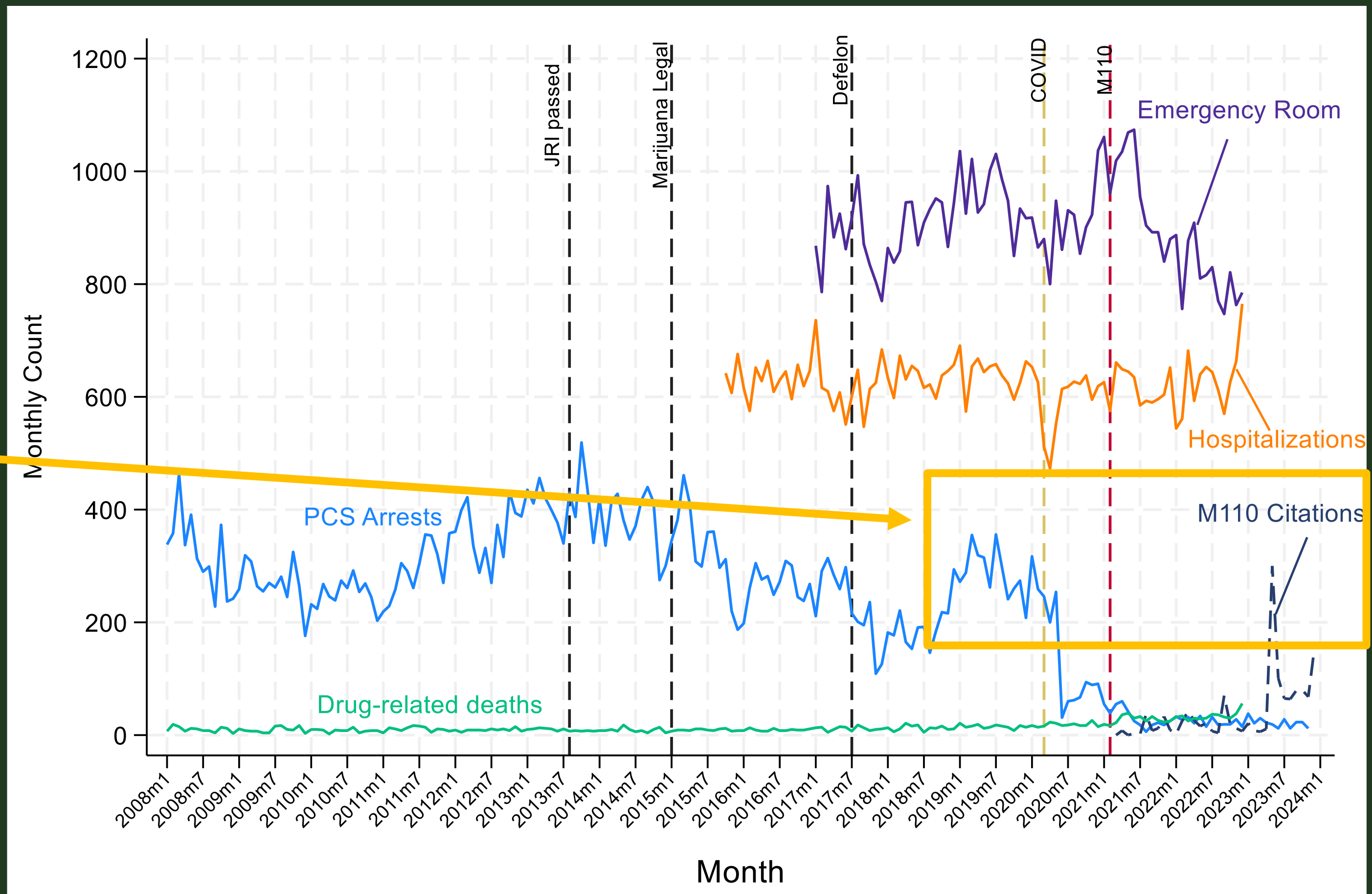




# Likely target population in Multnomah County?

Potential populations most likely engaging with police who could be receptive to **Pathway**

2 Active outreach,  
6 Community/Co-responder



# Challenges for expansion



## Logistics & Funding

Staffed deflection site / drop-in location

Clear inter-agency communication and defined roles

Transportation in rural areas to get participants to deflection sites

Regular coordinated outreach

## Officer Role

Officer intervention can/should be maintained, but supplemented

Welfare/Safety checks may be a good point for officer referrals

Buy-in remains a concern – active communication/interaction from deflection team

## Identifying Goals

Identify the goals / community need deflection is to address

Overdose concern – Naloxone plus

Houselessness – Active outreach

Criminal behavior – Police intervention / prevention

Each goal requires different approaches to target causes

# OHSU Deflection Implementation Technical Assistance



**Implementation Team**  
OHSU Section of Addiction  
Medicine (Department of General  
Internal Medicine)

**Dan Hoover**  
Addiction Medicine  
Subject Matter Expert Team Lead



**Implementation  
TA Center**

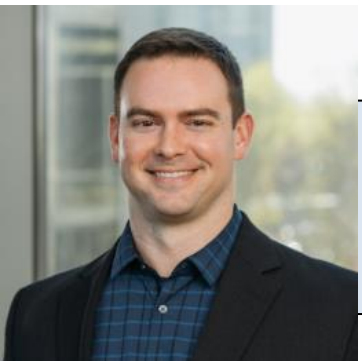


**Nancy Goff**  
ORPRN Deflection  
Team Lead



**National  
Experts**

**Local Subject  
Matter Experts**



**Christopher Campbell, PhD**  
Portland State University  
Associate Professor of Criminology

National and local  
SMEs & ORPRN Coach



**Kayla Warner, MPH  
(she/her)**  
ORPRN  
Deflection Coach

County Team

## County Participation in Technical Assistance (TA)



Unique counties based on participation as of 1/29/2025



# Expanding Deflection Pathways: Opportunities and Challenges

---

Christopher Campbell, PhD

*ccampbell@pdx.edu*

Presented to the Joint Committee on Addiction and Community Safety Response  
Criminal Justice Commission Summit  
March 7, 2025