



Oregon Department of  
**Early Learning  
and Care**

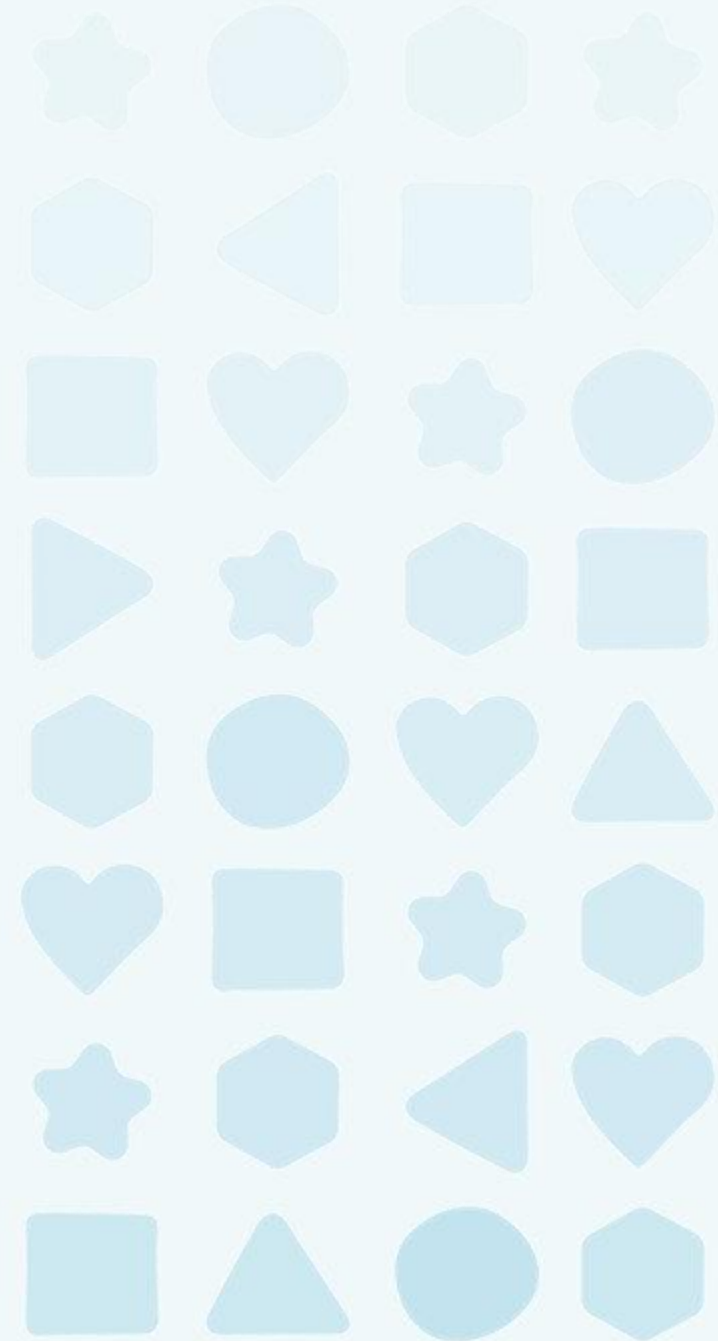
---

## **Early Learning & Child Care in Oregon**

Alyssa Chatterjee, Early Learning System Director

Alicia Gardiner, Child Care Licensing Division Director

Dorothy Spence, Interim Early Learning Programs Director



# The Impact of Early Learning & Child Care



Investments in early childhood have economic and early childhood development implications.



**Return on Investment**  
Every dollar invested in early childhood education can yield a return of between **\$4 and \$9** in economic benefits.



**Family Economic Stability**  
When parents are assured that their children are receiving quality care and education, they are better able to pursue full-time employment, which enhances household income and economic stability.



**Economic Impact in Community**  
Investment in early childhood programs creates jobs in the sector, and the economic stability afforded to families generates economic activity in local communities.



**Business Support**  
While many child care programs are small businesses themselves, access to child care reduce absenteeism and increases employee productivity.



**Literacy & Equal Access to Education**  
Early learning programs help close the achievement gap between children from affluent families and those from lower-income backgrounds so that all children can thrive.

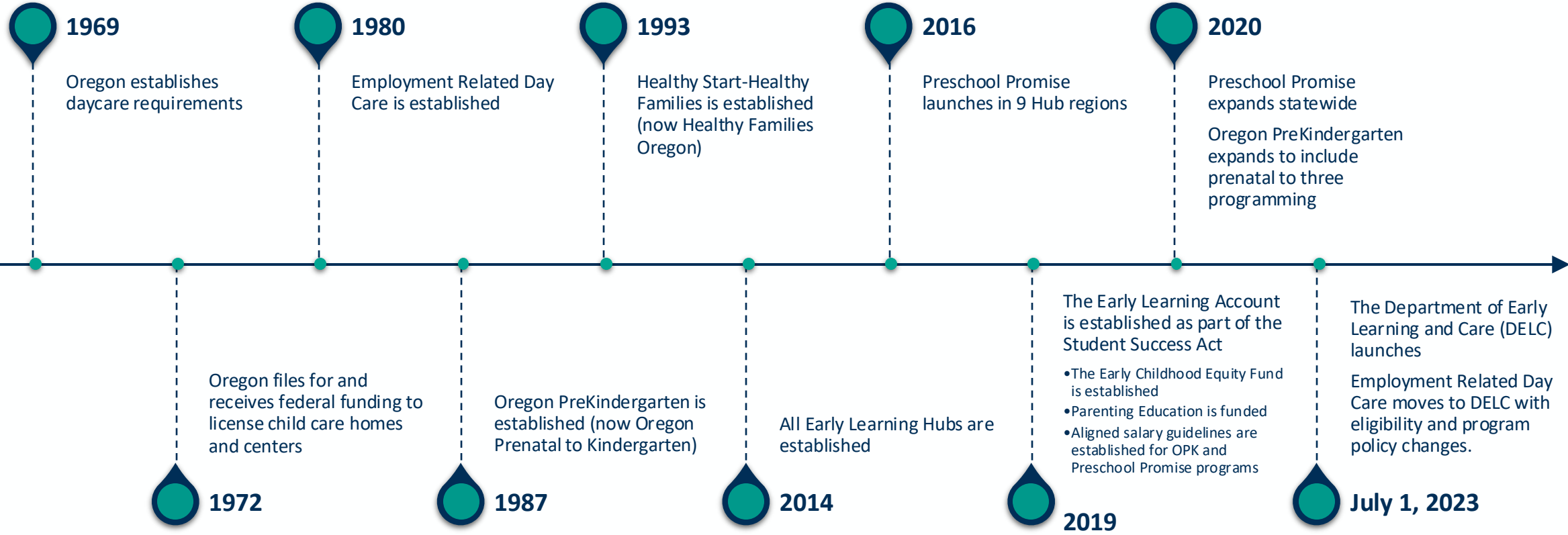
The Department of Early Learning and Care (DELIC) was established on July 1, 2023.

The agency focuses on increasing supports during a child's earliest years, primarily from prenatal to kindergarten.

DELIC administers the state's preschool and early learning and home visiting programs and supports infant-toddler care, funds professional learning services, and provides child care assistance to qualifying families. Additionally, DELIC provides child care licensing and health and safety monitoring through the Child Care Licensing Division.



# Oregon's Early Learning & Child Care History



# Becoming DELC



The Department of Early Learning Care launched July 1, 2023 as a result of HB 3073 passing in 2021. While creation of DELC combined programs and services from several agencies, some services remain with our partner agencies.

## Oregon Department of Education

**Moved:** All programs within the Early Learning Division

**Stayed:** Early Intervention/Early Childhood Special Education

## Oregon Department of Human Services

**Moved:** Employment Related Day Care, Direct Pay Unit, and Inclusive Partners.

**Stayed:** ERDC eligibility determination through ONE and Oregon Eligibility Partnership.

## Oregon Health Authority

**Stayed:** Home visiting programs, including Universally Offered Home Visiting

## Oregon Housing & Community Services

**Stayed:** Co-location of Affordable Housing and Child Care

## Business Oregon

**Stayed:** Child Care Infrastructure Fund

## Higher Education Coordinating Commission

**Stayed:** Oregon Student Child Care Grant, Early Childhood Professionals Scholarship



# Mission

The Department of Early Learning and Care fosters coordinated, culturally appropriate, and family-centered services that recognize and respect the strengths and needs of all children, families, and early learning and care professionals.

# Vision

All children, families, early care and education professionals, and communities are supported and empowered to thrive.

# Values

---

## Equity

We are committed to dismantling the systems of oppression that harm and create disparities for communities who are historically and institutionally excluded. We are adopting anti-racist principles, expanding access to services, and ensuring community representation and shared power in agency efforts. We are fostering a culturally responsive environment in which all individuals can experience a sense of belonging as they access programs, services, and resources.

---

## Respect

We believe that family is a child's first teacher. We are committed to nurturing family partnerships built on mutual respect. We recognize and value the knowledge and experiences of families, early care and education professionals, and community partners.

---

## Trust

We value the public's trust through honesty, transparency, and keeping our commitments.

---

## Relationships

We acknowledge the importance of nurturing relationships in the field and with community. We listen to, support, collaborate with, and celebrate the professionals, families, and children in our communities.

---

## Safety

We put safety and well-being first for our children, families, and early learning and care professionals.

---

## Continuous Improvement

We set goals, seek input from community, and use data to improve quality of service and programs, increase quality and efficiency, and drive innovation.

---

## Integrity

We are accountable for our actions, decisions, and our work to reliably achieve high-quality outcomes.

---



**Oregon Department of  
Early Learning and Care**



# DELC Services to Families and Early Childhood Workforce Development



- Baby Promise
- Child Care Licensing & Compliance
- Child Care Resource & Referral entities
- Early Childhood Equity Fund
- Early Learning Hubs
- Employment Related Day Care
  - BOLI Apprenticeship (expanding to CHIPS)
  - Head Start Contracted Slots
  - High Needs Rate
  - Teen Parent Program
- Every Child Belongs (early childhood suspension & expulsion prevention)
- Healthy Families Oregon
- Inclusive Partners
- Kindergarten Partnership & Innovation Fund
- Oregon Prenatal to Kindergarten
- Parenting Education
- Preschool Promise
- Professional Learning for the ECE Workforce
- Relief Nurseries
- Tribal Early Learning



# DELDC Strategic Plan: **Growing Oregon Together**



**GOAL 1: Access** All families have access to high-quality (culturally responsive, inclusive, developmentally appropriate) and affordable early learning and care that meets their needs.

**GOAL 2: Tribal Sovereignty** DELDC honors and recognizes the sovereignty of the nine federally recognized Tribal Nations within Oregon and ensures strong government-to-government relationships to benefit Tribal communities.

**GOAL 3: Infants and Toddlers** All families with infants and toddlers are supported through early learning and care programs that recognize and meet their unique needs.

**GOAL 4: Workforce** The early learning and child care workforce is diverse, culturally responsive, highly qualified, and well compensated.

**GOAL 5: Relationships** DELDC deepens community engagement and empowerment, sustains partnerships, and communicates effectively.

**GOAL 6: Foundations** DELDC develops and improves operational foundations to efficiently serve Oregonians.

<https://www.oregon.gov/delc/about-us/Pages/default.aspx#StrategicPlan>





# Child Care Licensing: What we Do & How We Do It



# Why Does Child Care Licensing Matter?



## Keeps Kids Safe

- Ensures health and safety
- Reduces abuse and neglect in care
- Provides accountability and oversight
- Builds public confidence
- Creates foundational standards for child care facilities

## Supports Positive Early Childhood Development

- Supports families
- Promotes professionalism in child care
- Providers gain access to resources to support quality care



# Child Care Licensing Division

The **Child Care Licensing Division (CCLD)** primary function is to inspect and license child care programs. CCLD ensures health and safety of children in child care by:

- **Providing Customer Service** to providers, families, and the public related to ERDC payment, Licensing, and DELC programs
- **Monitoring child care settings** for foundational health and safety licensing requirements.
- **Issuing and renewing licenses** to ensure ongoing compliance.
- **Providing technical assistance** to programs to improve safety and quality.
- **Conducting background checks** on all adults in contact with children while in child care settings.
- **Investigating complaints** and conducting tandem visits with the Office of Trainings, Investigations and Safety (OTIS) to investigate allegations of child abuse or neglect.
- **Reducing Barriers** through policy and rule revision to ensure reasonable and equitable enforcement

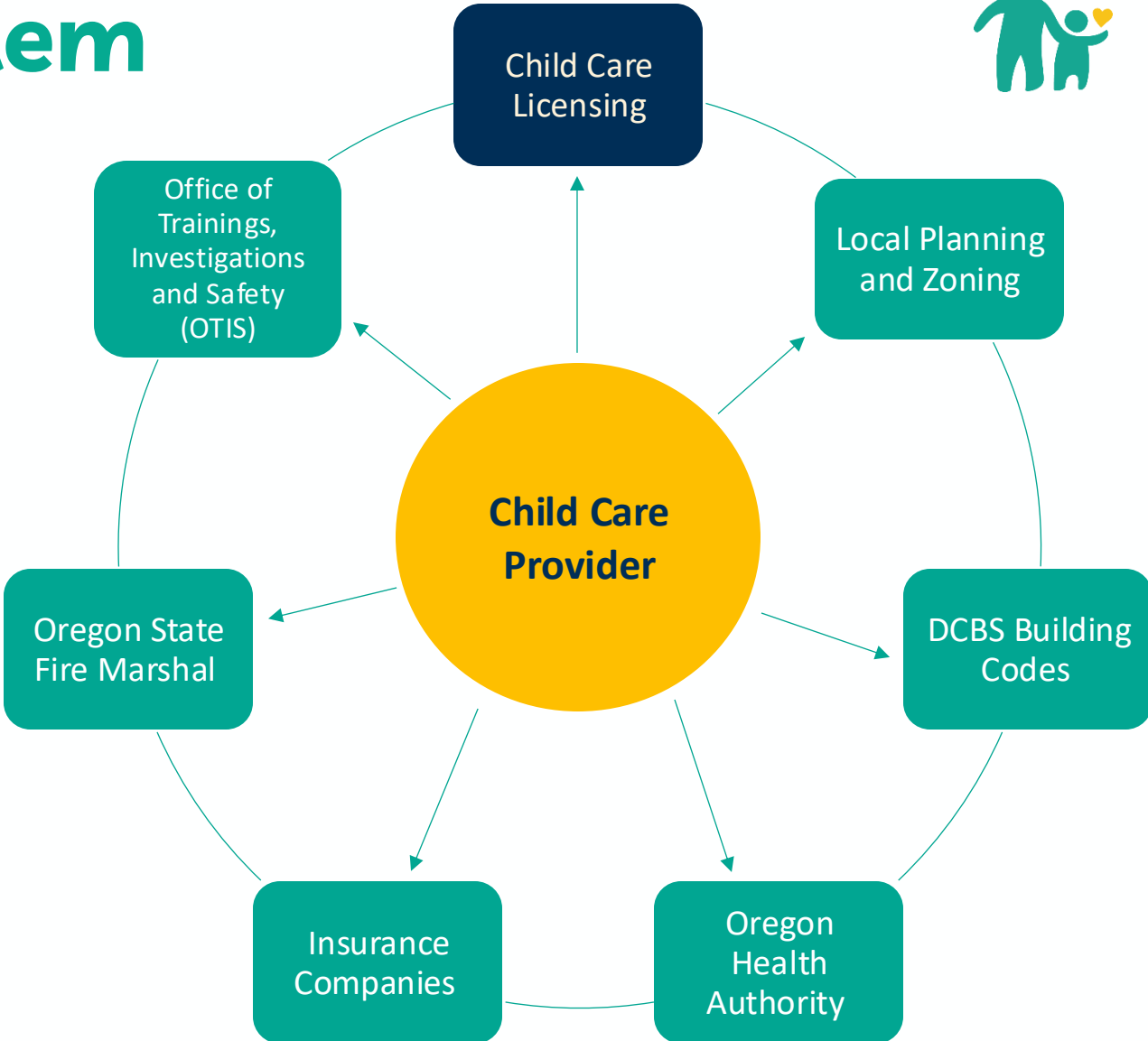


# Navigating the System



A child care provider must maintain compliance with many rules, laws and regulations.

Child Care Licensing is one aspect of the regulations, and CCLD partners with many agencies to coordinate regulations.



# Child Care and Development Fund



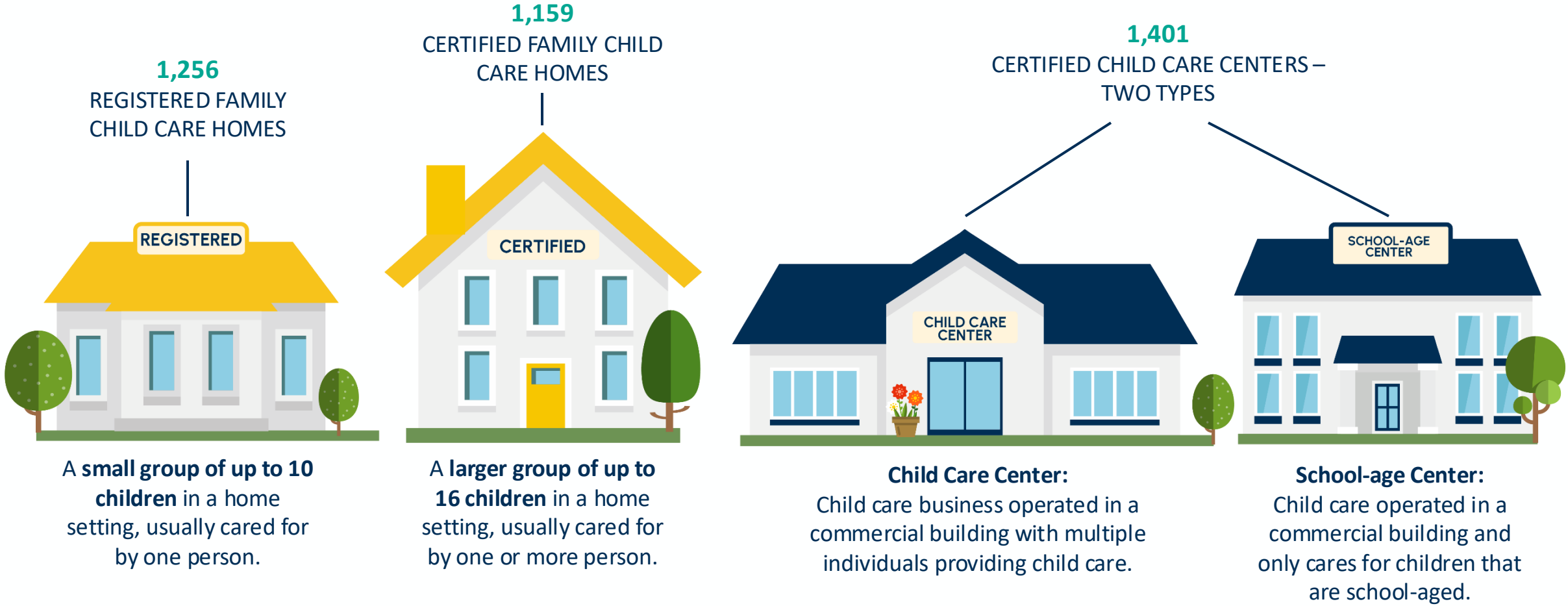
The **Child Care and Development Fund (CCDF)** is a federal grant from the U.S. Department of Health and Human Services issued to State, Territory, and Tribal grantees. CCDF supports Oregon's efforts to provide child care services for low-income families and enhance the quality of child care for all children.

- Staff-to-Child Ratios and Group Sizes
- Orientation/Pre-Service, and Ongoing Training Standards
- Emergency Preparedness and Response Planning Standards
- Monitoring and Enforcement of Licensing & Health and Safety Standards
- 11 Health and Safety Topics
- Comprehensive Background Checks
- Complaint Hotline and Child Safety Portal



# Types of Licensed Child Care

As of January 2025



Coming in July 2025: Outdoor Nature Based-Programs

# Other Types of Care



## Recorded Programs

- **School-age:** Offers youth development activities to school-age children that does not take the place of a parent's care and is offered during non-school hours.
- **Preschool:** Offers educational activities to preschool-age children for less than four hours per day

## Regulated Subsidy

- License-exempt programs that qualify for ERDC funds with inspection and background checks.
- May be in-home care or center-based (such as school-district operated or recorded preschool)

## Other Exempt Care

- Operated by school-district or government entity
- Parent cooperatives, limited to four hours a day
- Care where parents remain on site, such as a gym or a supermarket

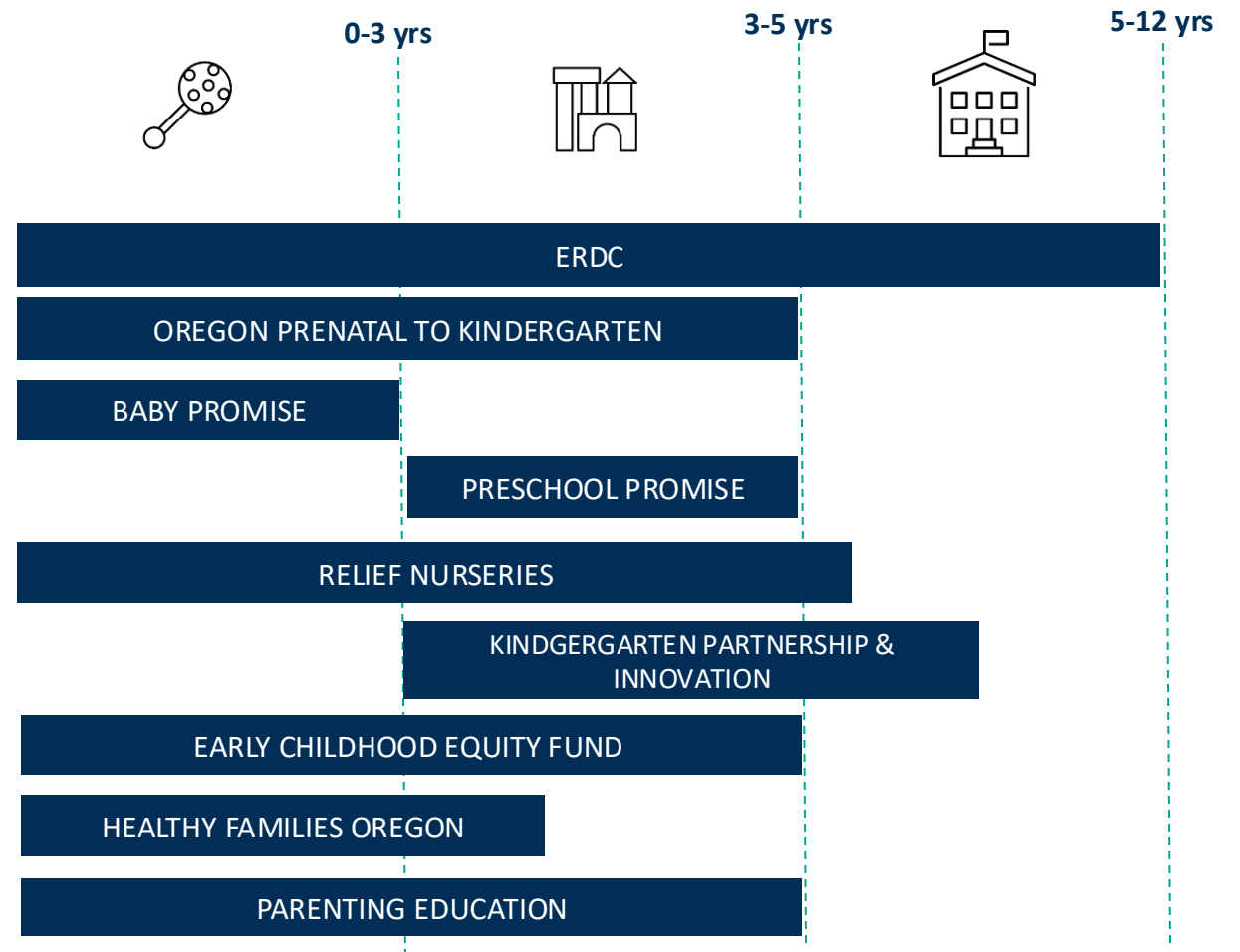
# Early Learning & Child Care Programs: What it Looks like in Oregon

# Early Learning and Child Care Programs



Our programs promote:

- **Affordability**
- **Early Literacy**
- **Learning and Development**
- **Family Support**



# Early Learning and Care by the Numbers



**212,000**  
children in  
Oregon from  
birth through  
preschool age



**112,720**

licensed child care capacity  
(6 weeks to 12 years)

Requires a workforce of  
over **24,000**



**26,000**  
children served by  
ERDC



Annually over  
**32,000** publicly  
funded early  
learning slots



Over **320\*** Grantees  
providing service to  
children and families

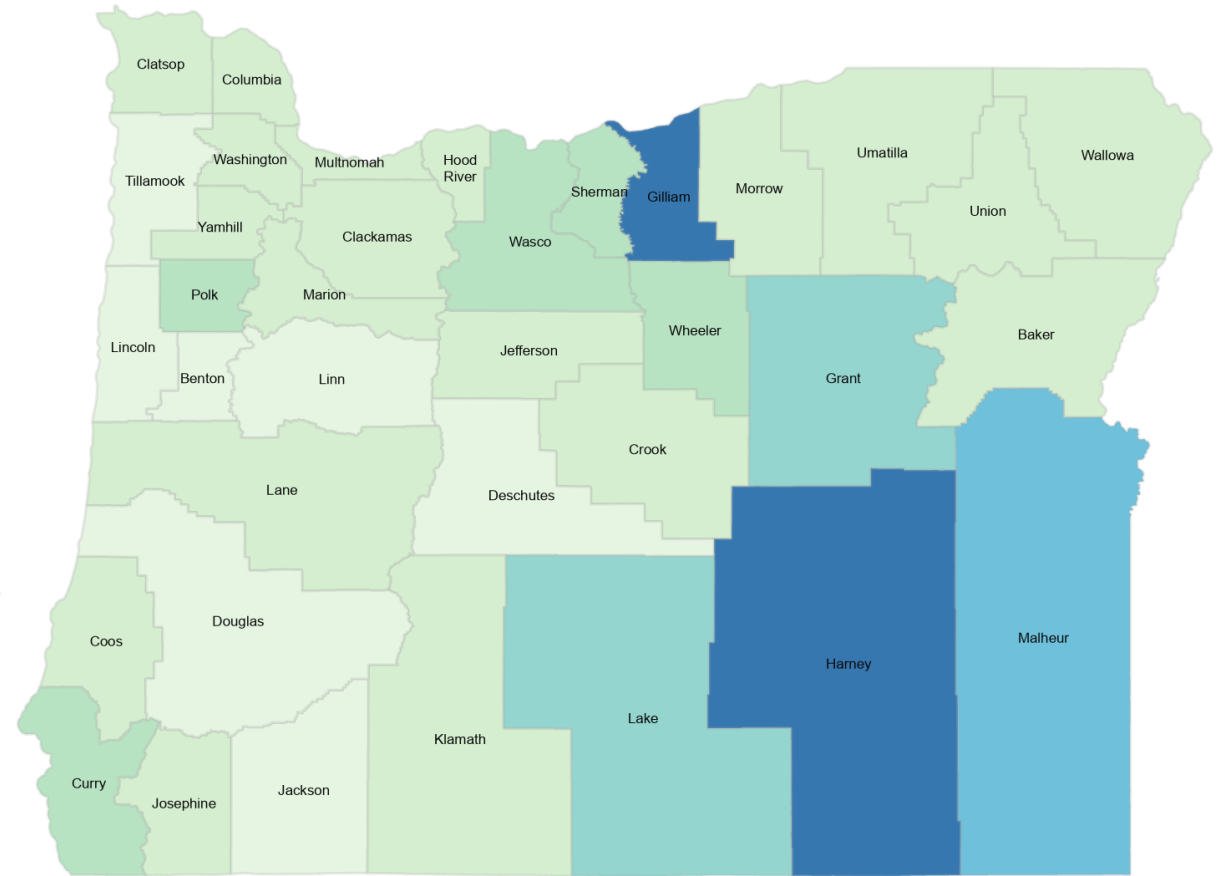
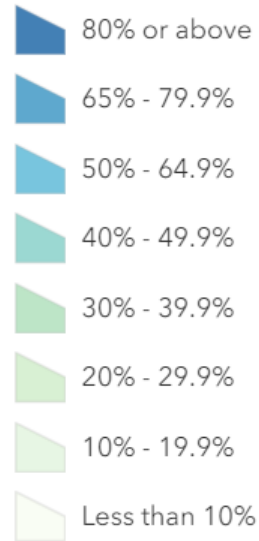
\*Reflects the number of grants administered for PSP, HFO, OPK, BP, ECEF, RN. Some programs have multiple grants and some programs sub-contract.



# 2023-2024 Percentage of Eligible (under 200% FPL) Children Under 5 with Access to a Publicly Funded Early Learning Slot



Similar to 2022-2023, in most Oregon counties, less than 40% of eligible children under 5 years have access to a publicly funded slot.



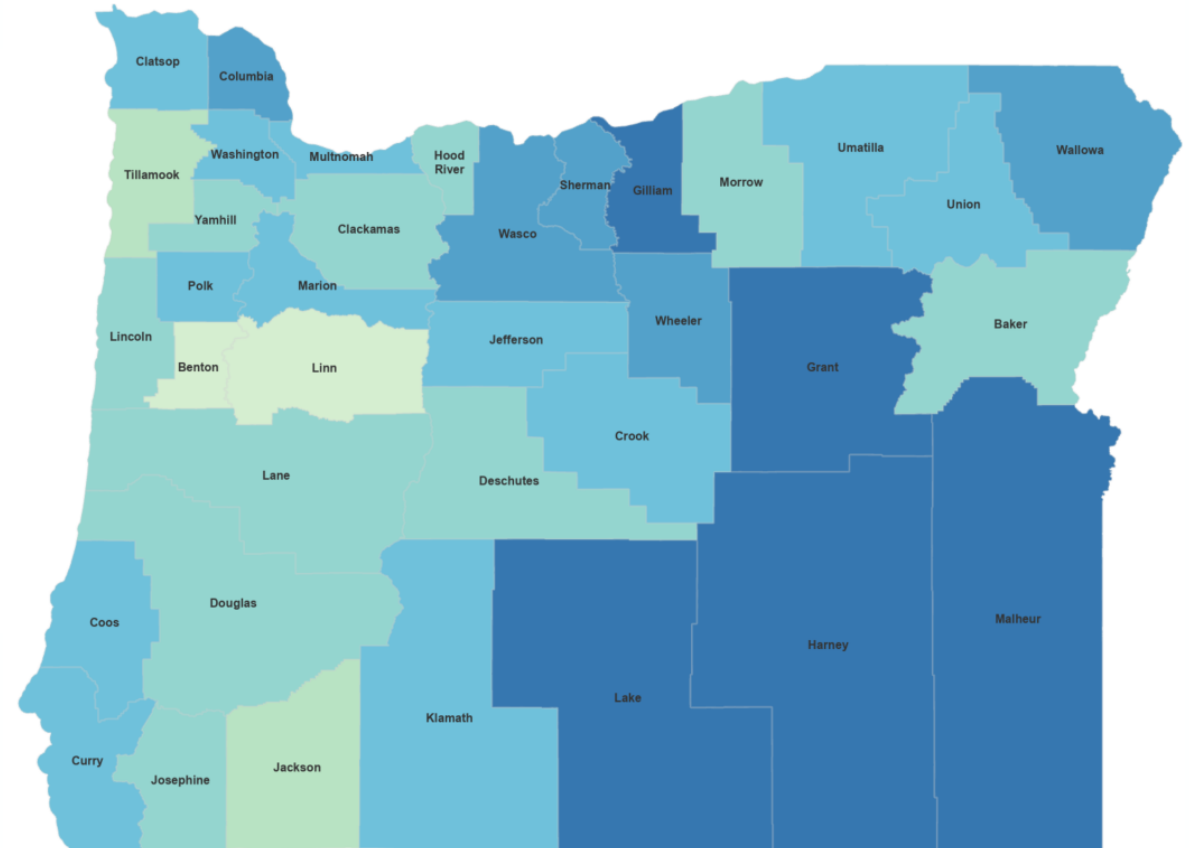
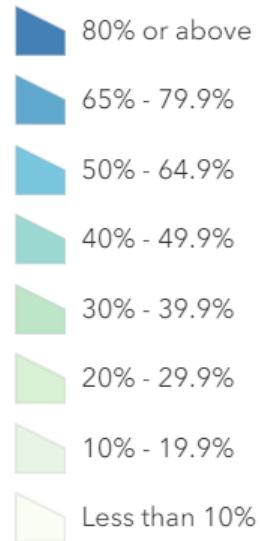
Note: Data includes 2023-2024 slot estimates for the following programs: Baby Promise, Preschool Promise, Oregon Prenatal to Kindergarten and federal Head Start/Early Head Start. Tribal Head Start, Migrant & Seasonal Head Start, and other publicly funded program data are not included. Source: Department of Early Learning and Care  
 Total population defined as children ages 0-4 living in families below 200% of the Federal Poverty Level; Source: ACS 5-Year Estimates 2021

# 2023-2024 Percentage of Eligible (under 200% FPL) Preschool Age Children with Access to a Publicly Funded Early Learning Slot



2022-2023 expansion in preschool programs has increased access for preschool aged children (ages 3 and 4).

Many counties now have access rates above 50%, with 5 counties meeting saturation goals of 80% or more.



Note: Data includes 2022-23 slot estimates for the following programs: Preschool Promise, Oregon Pre-Kindergarten and federal Head Start. Tribal Head Start, Migrant & Seasonal Head Start, and other publicly funded program data are not included. Source: Early Learning Division

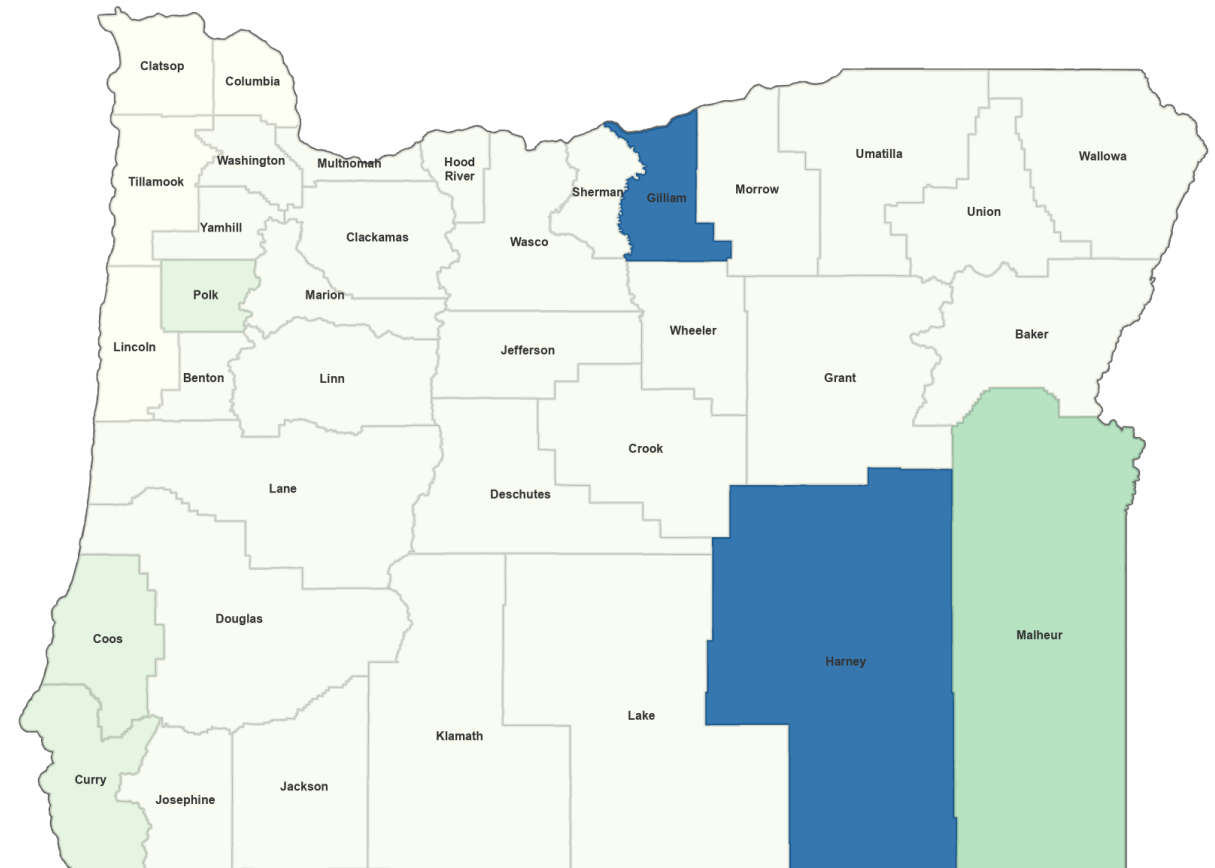
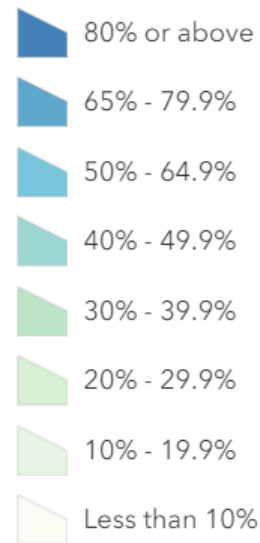
Total population defined as children ages 3 & 4 living in families below 200% of the Federal Poverty Level; Source: ACS 5-Year Estimates – 2021

# 2023-2024 Percentage of Eligible Children 0-2 with Access to a Publicly Funded Early Learning Slot



In most of Oregon’s counties, less than 10% of eligible infants and toddlers have access to a publicly funded slot.

All counties except 3 have access rates lower than 20% for eligible infants and toddlers. Some sparsely populated counties have reached full saturation at 80% or above.



Note: Data includes 2022-23 slot estimates for the following programs: Baby Promise, Oregon Prenatal to Three and federal Early Head Start. Tribal Head Start, Migrant & Seasonal Head Start, and other publicly funded program data are not included. Source: Early Learning Division  
 Total population defined as children ages 0-2 living in families below 200% of the Federal Poverty Level; Source: ACS 5-Year Estimates – 2021

# Baby Promise



|                         |  |
|-------------------------|--|
| <b>Program Overview</b> | Baby Promise provides families with free, high-quality infants and toddler child care while increasing access to infant and toddler child care.  |
| Who is eligible?        | Children 6 weeks to 3 years of age from families receiving Employment Related Day Care (ERDC) in three regions of the state  |
| Service Model           | <ul style="list-style-type: none"><li>• Stabilizing and expanding access to infant and toddler care to address child care desert</li><li>• Full work-day, full-year high quality infant and toddler care</li><li>• Offered in various settings, including child care centers, home-based child care.</li></ul> |
| Annual Service Level    | 241 children across three regions  |
| Access                  | Central Oregon (Crook, Jefferson, Deschutes), South Coast (Coos, Curry, and Coastal Douglas county), and Multnomah.  |
| 2023-25 Budget          | \$9.1 million  |
| Funding Sources         | Federal Child Care Development Funds (CCDF)  |
| Number of Grantees      | 3 Child Care Resource & Referral regions (30 provider sub-grantees)  |

# Dolly Parton's Imagination Library of Oregon



|                         |  |
|-------------------------|--|
| <b>Program Overview</b> | A free book gifting program, mailing high quality, age-appropriate books directly to children's homes.   |
| Who is eligible?        | All children from 0-5 years old  |
| Service Model           | <ul style="list-style-type: none"> <li>• One free book delivered monthly for children up to age five who sign up for program.</li> <li>• Books selected by professionals and are age-appropriate.</li> <li>• Language preference options for program communications in English and Spanish.</li> <li>• Books available in Braille.</li> <li>• Each age group of children receives two bilingual books annually.</li> </ul> |
| Access                  | 62,696 children enrolled and anticipate statewide coverage by February 2025  |
| 2023-25 Budget          | \$1.7 million  |
| Funding Sources         | General Fund   |
| Number of Grantees      | 1 (Dollywood Foundation)   |
| Other                   | State funds 50% of the cost of books & mailing for 56 local program partners across the state support distribution of books.   |



# Early Childhood Equity Fund



|                                     |   |
|-------------------------------------|---|
| <b>Program Overview</b>             | The Early Childhood Equity Fund supports culturally specific, kindergarten readiness, and family support programming,   |
| Organizations eligible for funding? | Organizations that focus on closing opportunity gaps for children and families who have been historically underserved due to factors such as race, income, zip code, or language. Equity Fund grantees are committed to providing early learning services rooted in culture, home language, and lived experience. |
| Service Model                       | Parenting Education, Parent-Child Interaction, Kindergarten Transition, Tribal Language Preservation & Revitalization   |
| Annual Service Level                | 7, 018 children and their families  |
| Access                              | Currently funding programs across 17 counties   |
| 2023-25 Budget                      | \$26.6 million  |
| Funding Sources                     | Transfer to the Early Childhood Equity Fund from Early Learning Account, General Fund   |
| Number of Grantees                  | 26 grantees   |

# Employment Related Day Care



|                                |  |
|--------------------------------|--|
| <p><b>Program Overview</b></p> | <p>ERDC provides financial assistance with a voucher to low-income families so children have access to stable child care and families can work or attend school.</p>   |
| <p>Who is eligible?</p>        | <p>Families with children under 13 (or under 17 with special circumstances) whose income is below 200% of FPL, and are working, in school, or receiving TANF.</p> <p>ERDC <b>now has a waitlist for most families</b> applying to the program. Families with specific needs can skip the waitlist and there are resources available to support families while they wait.</p>                                     |
| <p>Service Model</p>           | <p>ERDC makes payments directly to approved families chosen child care provider. Payments are made up to state maximum child care rates based on child age, family's eligible hours/provider's billed hours, region of the state, and child care provider type. A family may also pay a portion of the child care cost (copay) to their provider. The family copay is based on the family's size and income.</p> |
| <p>Current Caseload</p>        | <p>Over 16,000 families</p>  |
| <p>Access</p>                  | <p>All 36 counties in Oregon</p>   |
| <p>2023-25 Budget</p>          | <p>GF \$223,311,298 – FF ARPA (one-time) \$120,825,496 – FF CCDF \$108,087,995</p>   |
| <p>Funding Sources</p>         | <p>Federal Funds (ARPA one-time &amp; CCDF); General Funds</p>   |

# ERDC Policy Changes



| 2021  | January 2023                                       | July 2023                                 | January 2024            | May 2024  | July 2025   | July 2026                          | July 2027  |
|---|--|---|-------------------------|---|---|------------------------------------|--|
| Co-pays reduced to <7% household income               | Expanded student eligibility                       | Protected 12-month eligibility            | Provider rate increases | Expanded to children regardless of immigration status | HB 2683 (2023) expansion to families using or at risk of using child welfare services | New CCDF rules implementation date | HB 2683 expansion to families using homelessness, teen parent, or domestic violence services |
| Provider payment based on enrollment (not attendance) | Part-time/full-time child care hour authorizations | Categorical eligibility for TANF families |                         |   |   |                                    |  |
|   | Expanded medical leave                             |   |                         |   |   |                                    |  |

# Healthy Families Oregon (HFO)



|                         |   |
|-------------------------|---|
| <b>Program Overview</b> | A free, voluntary home visiting program offering support and education to families that are expecting or parenting newborns. The home visiting services are offered for a minimum of 3 years.   |
| Who is eligible?        | Families who are expecting or parenting newborns and are determined to be at higher risk for adverse childhood outcomes.  |
| Service Model           | <ul style="list-style-type: none"><li>• Eligibility screening and referral services</li><li>• An intensive, evidence-based home visiting model accredited through Healthy Families America</li><li>• Visits assist families to cultivate and strengthen nurturing parent-child relationships, promote healthy childhood growth and development, enhance family well-being by reducing risk and building protective factors.</li></ul> |
| Annual Service Level    | 2,120 families receive at least 1 home visit<br>3,212 families receive screenings   |
| Access                  | Statewide across all 36 counties  |
| 2023-25 Budget          | \$40.1 million  |
| Funding Sources         | General Fund, Title XIX Medicaid, Title IV-B2, and Early Learning Account   |
| Number of Grantees      | 17 Grantees   |

# Oregon Prenatal to Kindergarten (OPK)



|                                       |  |
|---------------------------------------|--|
| <b>Program Overview</b>               | Oregon Prenatal to Kindergarten (OPK) is modeled after Head Start to support family success and healthy child development. OPK offers free, high-quality preschool, infant/toddler care and family support services.   |
| Who is eligible?                      | A pregnant parent or a child up to kindergarten entry is eligible if the family’s income is equal to or below 100% of the Federal Poverty Level (FPL) or is categorically eligible.  |
| Service Model                         | Program services include: <ul style="list-style-type: none"> <li>• Preschool education and early childhood development</li> <li>• Child health/mental health and nutrition</li> <li>• Parent education and family support</li> </ul> OPK emphasizes the role of parents as their child’s first and most important teacher and families as advocates and leaders. |
| Annual Service Level                  | All 36 counties have OPK and Head Start services, with most grantees blending state and federal resources.<br><b>OPK Total: 8,714</b> (Preschool: 7,330; Prenatal to Three: 1,384)<br><b>Federal Total: 5,867</b> (Head Start: 3,954; Early Head Start: 1,913)<br><b>Total OPK and Federal Head Start: 14,581 children and their families</b>                    |
| 2023-25 Budget                        | \$365.4 million  |
| Funding Sources                       | General Fund, Early Learning Account<br><i>(Federal funds go directly to Head Start grantees)</i>  |
| Number of Grantees Providing Services | 30 OPK grantees<br>25 are dually funded OPK and federal Head Start grantees (one Tribal Head Start, one Migrant Seasonal HS/EHS)<br>5 are state funded only  |



# Preschool Promise



|                                       |  |
|---------------------------------------|--|
| <b>Program Overview</b>               | Preschool Promise provides families with free, high-quality preschool that uses a mixed delivery approach, giving families the ability to choose the setting that works best for them and their child.   |
| Who is eligible?                      | Three- and four-year old children in families whose income is at or below 200% of the Federal Poverty Level or in foster care programs.  |
| Service Model                         | <ul style="list-style-type: none"><li>• Children receive preschool services equivalent to a kindergarten school year.</li><li>• Preschool is offered in various settings, including child care centers, home-based child care, and public schools.</li></ul> |
| Annual Service Level                  | 5,344 children   |
| Access                                | Statewide across all 36 counties   |
| Number of Grantees Providing Services | 234 Grantees in various settings   |
| 2023-25 Budget                        | \$205.3 million  |
| Funding Sources                       | General Fund, Early Learning Account   |

# Relief Nurseries



|                         |  |
|-------------------------|--|
| <b>Program Overview</b> | Relief Nurseries provide early intervention services by offering comprehensive and integrated early childhood therapeutic and family supports to prevent the cycle of child abuse and neglect. |
| Who is eligible?        | Children ages 0-6 with at least 5 Family Stressors (from The Family Stressors Checklist)   |
| Service Model           | Outreach (Home Visiting, Respite, Parent Support, Tangible Supports, Screening and Referral) and Therapeutic Early Childhood Program (Outreach plus a 3 -6 hour weekly Therapeutic Classroom)  |
| Annual Service Level    | 2,257 Children   |
| Access                  | 19 of 36 counties  |
| 2023-25 Budget          | \$27.1 million   |
| Funding Sources         | General Fund, Early Learning Account, Title XX, and Asset Forfeiture   |
| Number of Grantees      | 16 grantees  |
| Other                   | Required to match state grant funds with 25% community funding match.  |

# Birth through Five Literacy



|                           |  |
|---------------------------|--|
| <b>Overview</b>           | The Birth through Five Literacy initiative’s purpose is to positively impact literacy development in children aged birth to kindergarten within the context of whole child development.  |
| <b>Model</b>              | For the 23/25 biennium, funds allocated to Early Learning Hubs for Kindergarten Partnership and Innovation, Early Childhood Equity Fund grantees, and Tribal Nations.  |
| <b>Key activities</b>     | <ul style="list-style-type: none"> <li>• Expand culturally specific early literacy programs for children from birth through five years.</li> <li>• Provide research-aligned, developmentally appropriate professional training and coaching for direct service staff in early literacy.</li> <li>• Promote the capacity of programs that engage parents and children from birth through five years of age in early literacy.</li> <li>• Expand and develop language revitalization efforts by federally recognized Tribes in the state of Oregon.</li> </ul> |
| <b>Access</b>             | All 16 Early Hub regions and 7 Tribal Nations  |
| <b>2023-25 Budget</b>     | \$9.4 million  |
| <b>Funding Sources</b>    | Early Learning Account   |
| <b>Number of Grantees</b> | 49 grantees (16 Early Learning Hubs, 7 Tribal Nations, 26 Early Childhood Equity Fund grantees)  |
| <b>Other</b>              | High level of collaboration and alignment with Oregon Department of Education.   |

# Early Learning Hubs



|                         |   |
|-------------------------|---|
| <b>Program Overview</b> | Regional Early Learning Hubs align and coordinate early learning and care services to produce better outcomes for children and families.  |
| Governance              | Hub Governance Boards include: <ul style="list-style-type: none"><li>Families from Hub-identified priority populations, Oregon Department of Human Services, Child Care Resource and Referral agency, K-12 partners, Early Learning Programs, Business, Health care, Human services, and Tribe(s)</li></ul>   |
| Key activities          | <ul style="list-style-type: none"><li>Convene community partners to assess and strategize solutions to emerging and persistent issues</li><li>Create early care and education sector plans that guide state investments to communities that have been historically under-resourced and underserved</li><li>Strategically investment in programs in their communities to increase access to early learning</li><li>Support coordinated enrollment for publicly-funded preschool so families can access the programs that best meet their needs</li></ul> |
| Access                  | 16 regions across the state of Oregon   |
| 2023-25 Budget          | \$22.9 million  |
| Funding Sources         | General Fund; Title IV-B2; Early Learning Account   |

# Kindergarten Partnership & Innovation (KPI)



|                         |   |
|-------------------------|---|
| <b>Program Overview</b> | Kindergarten Readiness Partnership and Innovation grants fund a diverse range of programming and cross-sector alignment that supports early school readiness and family engagement, as well as professional development for early childhood and early grades educators. |
| Who is eligible?        | All 16 Early Learning Hubs receive grant funds to use for staffing KPI work and to subcontract services. KPI funds are prioritized for programs serving historically underserved and under-resourced families.  |
| Key activities          | <ul style="list-style-type: none"> <li>• Early Kindergarten Transition Programs connected to K-12;</li> <li>• Joint training on early learning standards and practices for preschool and K-3rd staff</li> </ul>   |
| Annual Service Level    | 8,836 children and parents/caregivers in 2021-2022; 2563 educators participated in professional development activities  |
| Access                  | Statewide across all 36 counties  |
| 2023-25 Budget          | \$9.5 million   |
| Funding Sources         | General Fund  |

# Child Care Resource & Referral



|                         |   |
|-------------------------|---|
| <b>Program Overview</b> | Regional organizations that recruit, train and promote retention of a high quality, diverse Early Care and Education Workforce.   |
| Who is supported?       | <ul style="list-style-type: none"><li>• Prospective child care providers</li><li>• Licensed and license-exempt child care providers</li></ul>   |
| Key activities          | Create and expand professional learning systems accessible to all Early Care and Education Providers. <ul style="list-style-type: none"><li>• Recruitment &amp; Retention</li><li>• Professional learning and quality improvement</li><li>• Business Support</li><li>• Collect available data on regional child care supply</li></ul> |
| Annual Reach            | Training Events offered: 2,000<br>Participants attending: 23,686  |
| Access                  | Statewide through grants with 15 regional CCR&Rs  |
| 2023-25 Budget          | \$24.0 million  |
| Funding Sources         | Federal Fund; General Fund; Early Learning Account  |

# Parenting Education



|                         |  |
|-------------------------|--|
| <b>Program Overview</b> | Free parenting classes, resources, and events available to families through a network of parenting hubs and partner organizations.   |
| Who is eligible?        | Parents and families that have been identified through Early Learning Hub Community Planning, including families with children 0-3; families in poverty; families with children who have experienced disability; immigrant and refugee families; foster families |
| Key activities          | Home visiting, Parent Education Series and workshops delivered through Oregon Parenting Education Collaborative Hubs (16)  |
| Annual Service Level    | Over 2,000 families  |
| Access                  | Statewide across all 36 counties   |
| 2023-25 Budget          | \$4.3 million  |
| Funding Sources         | Early Learning Account   |



# Questions

---

# DELC Contacts



**Alyssa Chatterjee**, Director,  
[alyssa.chatterjee@delc.oregon.gov](mailto:alyssa.chatterjee@delc.oregon.gov), 971-283-1271

**Kate Denison**, Government Affairs Manager,  
[kate.denison@delc.oregon.gov](mailto:kate.denison@delc.oregon.gov), 503-551-6826  
*(on leave thru Feb)*

**Kathy Wai**, *Interim* Government Affairs  
Manager, [kathy.wai@delc.oregon.gov](mailto:kathy.wai@delc.oregon.gov)

**DELC Government Affairs Team**, [delc.govaffairs@delc.oregon.gov](mailto:delc.govaffairs@delc.oregon.gov)

**Alicia Gardiner**, Child Care Licensing Division Director,  
[alicia.gardiner@delc.oregon.gov](mailto:alicia.gardiner@delc.oregon.gov), 503-302-9549

**Dorothy, Spence**, Interim Early Learning Programs Director,  
[dorothy.spence@delc.oregon.gov](mailto:dorothy.spence@delc.oregon.gov), 971-388-3724