

What is a Recycling & Transfer Station?



- A transfer station is a facility where waste is temporarily stored before being reloaded into larger vehicles (open top transfer trailers or intermodal containers) for transport to a final disposal, recycling or composting facility.
- Modern transfer stations are paired with recovery opportunities for hard to recycle materials. Examples include:
 - A reuse component (often a partnership with a non-profit)
 - Space to collect construction & demolition waste for further processing
 - Collection of statewide accepted materials that are not recyclable curbside, like paint, mattresses, electronics, Styrofoam, shredded paper, bulky plastics, aluminum foil and scrap metal. Other materials may include batteries, fluorescent lights, bicycles, etc.
 - An organics drop-off area

MRFs / CRPFs

Dirty MRFs

MWPF



Material Recovery Facilities (MRFs) or Commingled Recycling Processing Facilities (CRPFs)* are places where commingled recyclables are separated into their commodity type and prepared for transportation to markets.

“Dirty MRFs” are facilities that receive waste and process it for recovery. Examples include the C&D recovery facilities, Re:Source, in Brooks and Willamette Resources in Wilsonville.*CRPFs are MRFs that have been approved by the DEQ

A Mixed Waste Processing Facility (MWPF) sorts recyclables and other valuable materials from unsegregated garbage (municipal solid waste) after collection, using automated equipment and manual labor to separate items like paper, plastic, and metal from contaminants like food waste or dirt. They are often paired with an anaerobic digester to maximize methane recovery. The CleanLane facility in Lane County and the former Juno Facility in Toledo are examples.

How are transfer stations different than other solid waste facilities?



Transfer stations are private or publicly owned/operated facilities where waste and recycling is brought to be prepared for more efficient shipping. Some transfer stations offer expanded recycling and reuse opportunities.

Why is a transfer station needed?



- The Coffin Butte Landfill (CBL) has served as the primary landfill for Benton County dating back to the 1940's. Once full, the garbage will need to be transported to a distant facility/landfill. A transfer station will be needed to more efficiently transport the waste to final disposal and will allow for expanded recovery and reuse.
- The Coffin Butte Landfill will reach capacity in approximately 2037 (without expansion) or 2042 (with expansion).
- It can take a decade or more to site and build a transfer station, so with only 11-17 years of capacity remaining, it would be prudent to begin planning for one now.

Recycling & Transfer Stations Desirable Attributes

- Sited in a location with appropriate land use zoning with minimal wetland and traffic impacts
- Conveniently located for public
- Located away from residential neighbors
- 5-15 acres - Space to expand and take specific waste streams (furniture, C&D, roofing, mattresses, paint, bicycles, etc.)
- Garbage and recycling areas are covered (odors, noise, vectors, rain in waste, clean, safety)
- Reuse center
- Space for long queue lines and a bypass lane
- Odor and fire suppression systems
- Recycling depot before scales
- Co-located with a HHW facility (or space for events)
- Publicly owned, privately operated
- Compactors on-site for garbage, commingled & cardboard
- Storage area for boxes and commodities (covered)
- Separate commercial and self-haul areas (traffic, safety)
- Educational tours and classroom
- Visual screening / buffer area
- Admin. building (small)
- Public restroom
- LEED certification



Oakridge (Lane County) Recycling & Transfer Station

Drop box staging area

Z-wall
Garbage
Boxes
(uncovered)

This is an example of a small, rural transfer station. Lane County operates 15 transfer stations!

Scale House

Recycling
Depot



North Marion County Recycling & Transfer Station

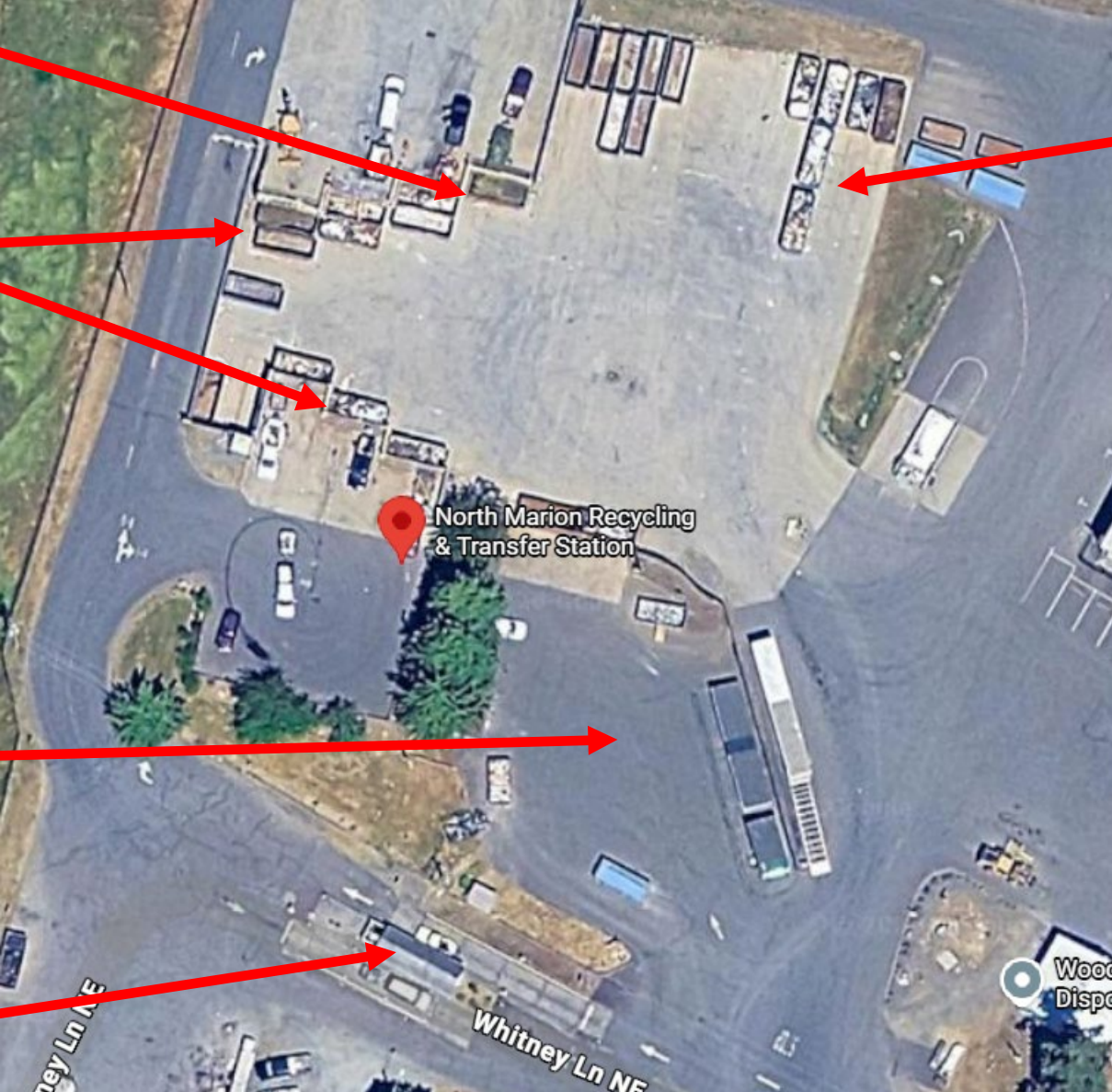
Yard Debris

Z-wall
Garbage
Boxes
(uncovered)

Drop box
staging area

Recycling
Depot

Scale House



Deschutes County Recycling & Transfer Station

Scale House

Hazardous Waste Facility

Admin. Bld.

Recycling School Fieldtrips

Covered Garbage Pit

Drop Box Staging Area

Yard debris



Features:

- Size: ~12.25 acres; ~35,000 Sq. Ft.
- Tip Rate: \$57/ton
- Tons/Year: 50k
- \$16M (2007) to construct all 5 buildings pictured and scales

Covered Recycling Depot



Expanded Recycling Depot

Deschutes County has a robust waste prevention/recycling education program (funded through tip fees), including school tours



ReHub Polk Recycling & Transfer Station (Rickreall, OR)

Features:

Size: ~25 acres; Building ~ 77,500 Sq. Ft. covered (new TS building only), 185k Sq. Ft. total
Tip Rate: \$125/ton
Tons/Year: 500k tons
\$20M +/- 25% (2026)

Covered Metal Drop-off

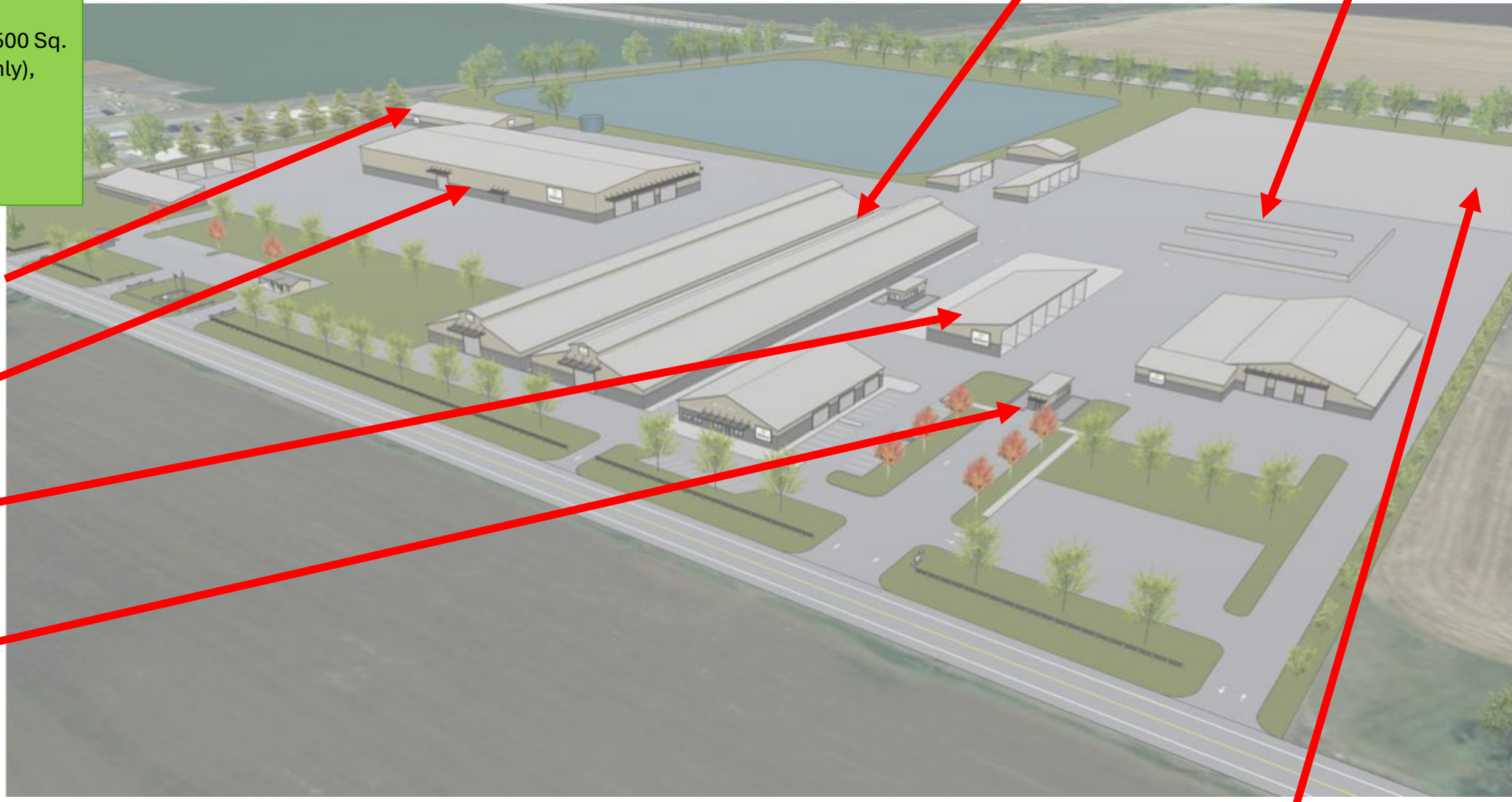
Covered Garbage Pit

Recycling Depot

Scale house

Recycling Commodity Storage

Yard debris



Drop Box Staging Area

Lane County Recycling & Transfer Station (Glenwood, OR)

Drop Box
Staging Area

Recycling
Depot

Reuse (non-profits)

Yard debris

Covered
Garbage Pit

Scale House

Features:

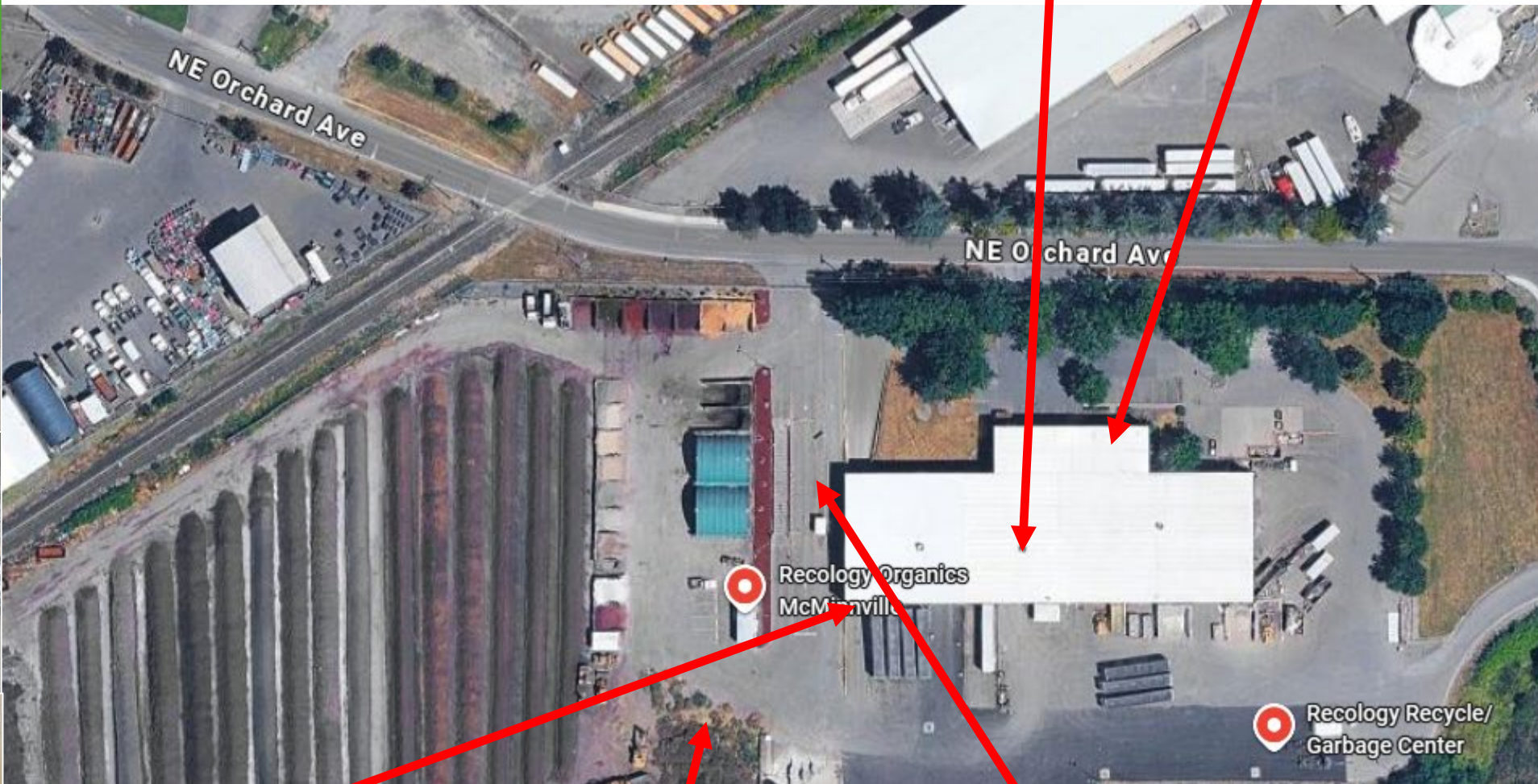
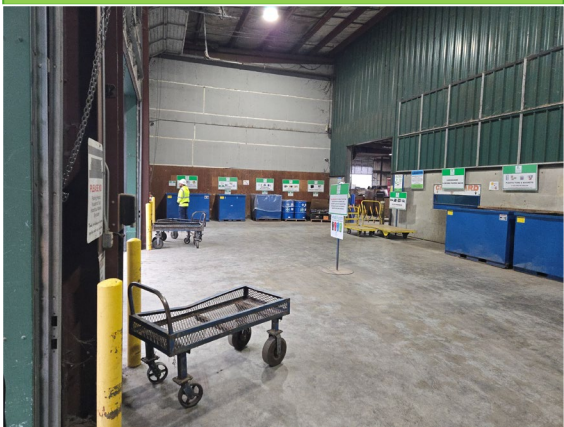
- Size: ~12.25 acres; 33k sq. ft. covered area
- Tip Rate: \$85.90/ton
- Tons/Year: 51k

Hazardous
Waste Facility



Recology Recycling & Transfer Station (McMinnville, OR)

- Features:**
- Size: ~4 acres (36,600 Sq. Ft. covered)
 - Tip Rate: \$26/cy = \$189/ton
 - Tons/Year: 55,000 tons



Covered Garbage

Recycling Depot

Recology Organics
McMinnville

Recology Recycle/
Garbage Center

Top loading
transfer trailers

Yard Debris

Scale
(commercial)

Negus Recycling & Transfer Station (Deschutes County)



Recycling Depot

Covered Garbage Pit

School tours

Scale House

Yard debris

Drop Box Staging Area

Features:

- Opened in May 2025 - \$20M (2024) - 4 yrs. to build
- 6 employees run it
- 10-15 transfer trailers/day
- Size: ~9.5 acres; 35k Sq. Ft. covered
- \$20M (2024)
- Tip Rate: \$57/ton
- Tons/Year: 420 tons/day (~105k tons/yr)
- <https://www.facebook.com/Deschutes.County/videos/new-negus-transfer-facility-sneak-peek/451271274141548/>

Features:

Size: ~8.5 acres; Building ~15k Sq. Ft. covered

Tip Rate: \$87.45/ton

Tons/Year: 65k tons

Salem-Keizer Recycling & Transfer Station



Drop Box Staging Area

Recycling Depot

Hazardous Waste Facility

Recycling Nature Trail (schools)

Yard debris

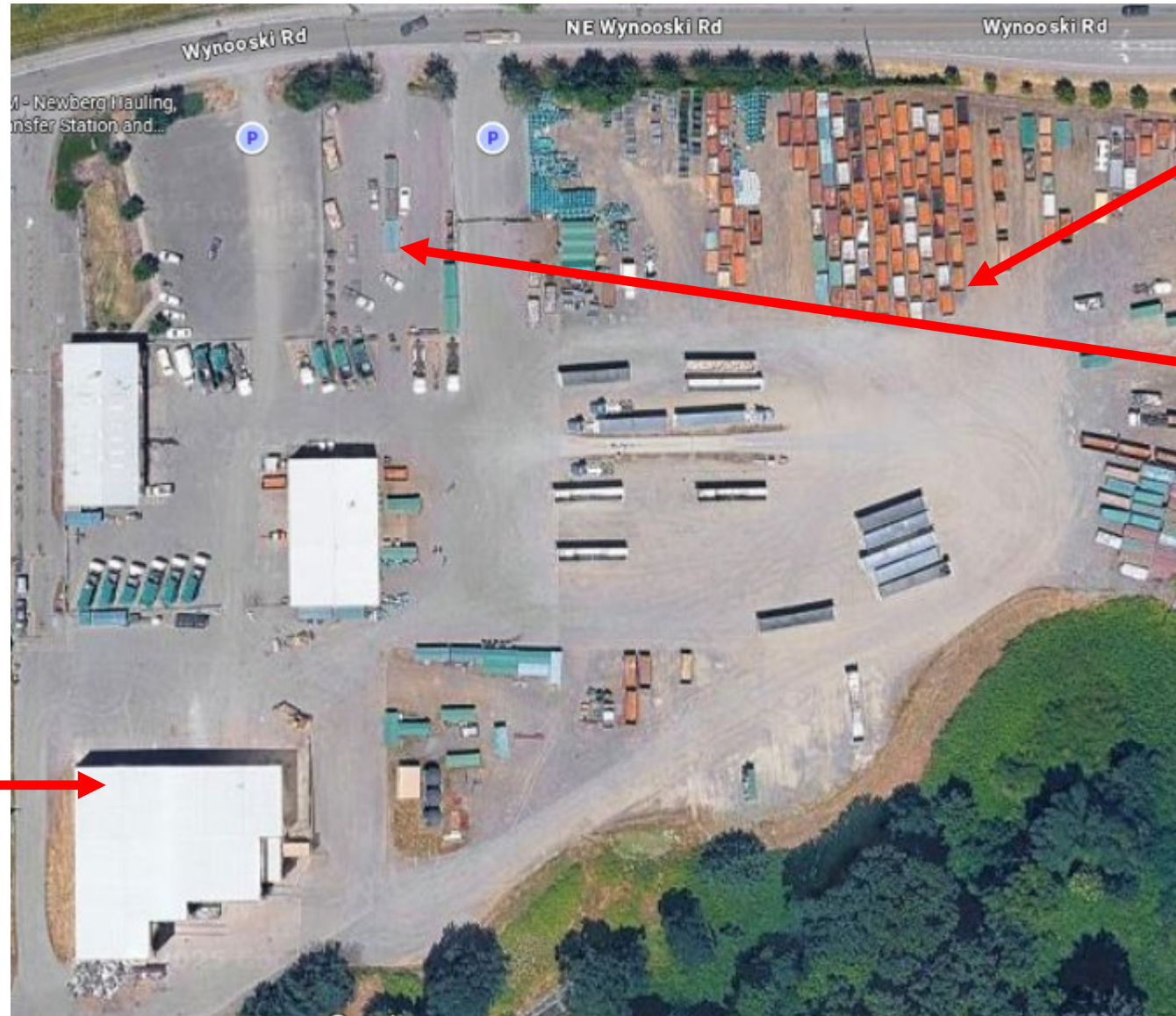
2 scale houses

Covered Garbage Pit

Newberg Recycling & Transfer Station (Waste Management)

Features:

- Size: ~9.25 acres (28,400 Sq. Ft. covered)
- Tip Rate: \$27.24/cubic yard (no scales) = \$198/ton
- Tons/Year: 55k



Drop Box
Staging Area

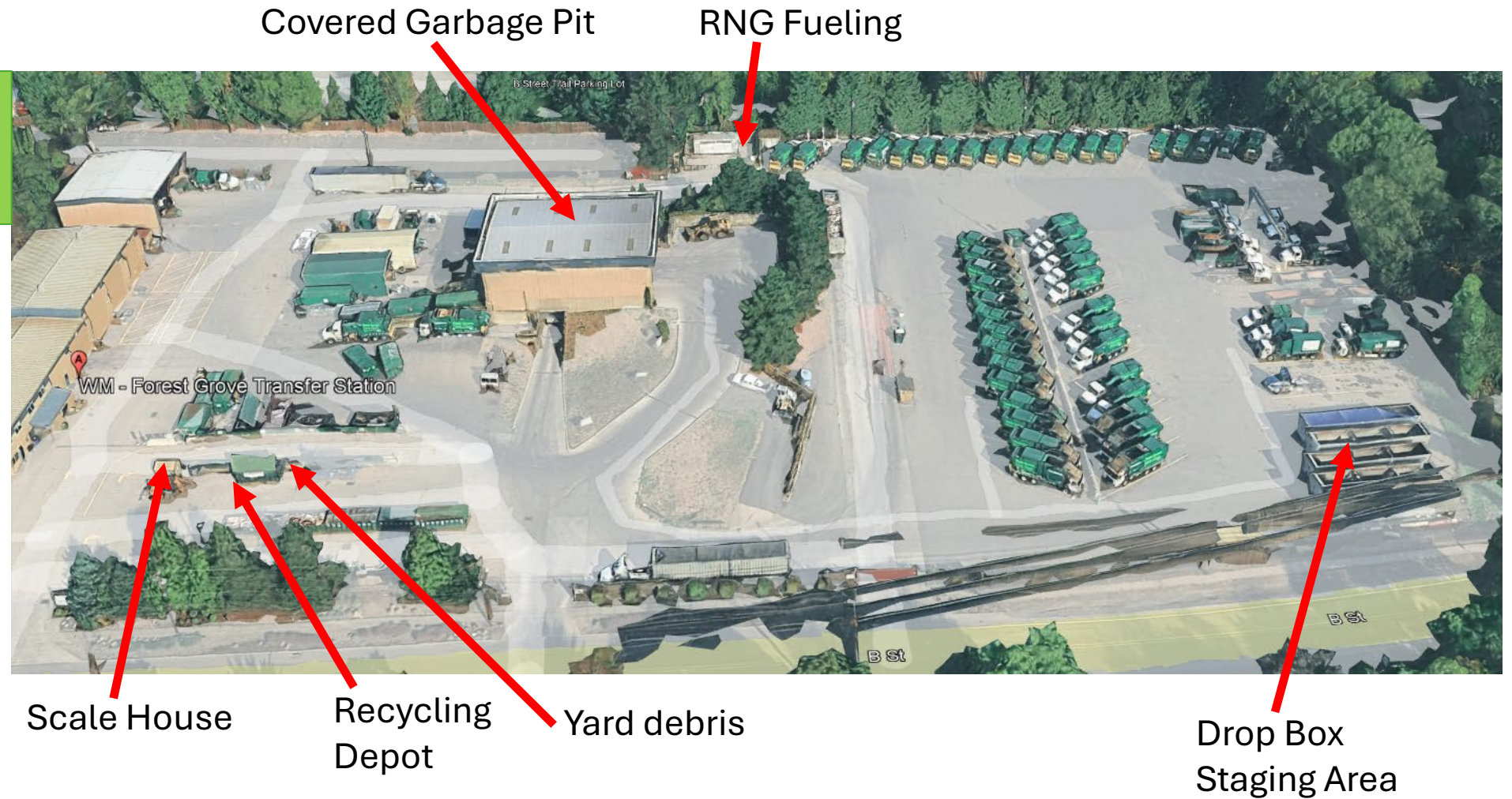
Recycling
Depot

Covered
Garbage Pit

Forest Grove Recycling & Transfer Station (Waste Management)

Features:

- Size: ~5 acres; 6k Sq. Ft. Covered
- Tip Rate: \$162/ton
- Tons/Year: 77k



Covered Garbage Pit

RNG Fueling

Scale House

Recycling Depot

Yard debris

Drop Box Staging Area

Dahl Recycling & Transfer Station (Newport, OR)

Features:

- Size: ~3.5 acres (8,500 Sq. Ft. covered)
- Tip Rate: \$180/ton
- Tons/Year: 10,000 tons



Drop Box
Staging Area

Yard debris

Covered Garbage Pit

Recycling
Depot

Scale House

Tillamook Recycling & Transfer Station

- Features:**
- Size: ~1.5 acres; 19,300 Sq. Ft. covered
 - Tip Rate: \$119/ton (\$136 in Pacific City; \$139 in Manzanita)
 - Tons/Year: 20k tons

Yard debris

Scale House

Drop Box
Staging Area



Recycling
Depot

Covered Garbage Pit
Depot

Portland Metro Central Recycling & Transfer Station

Hazardous Waste Facility

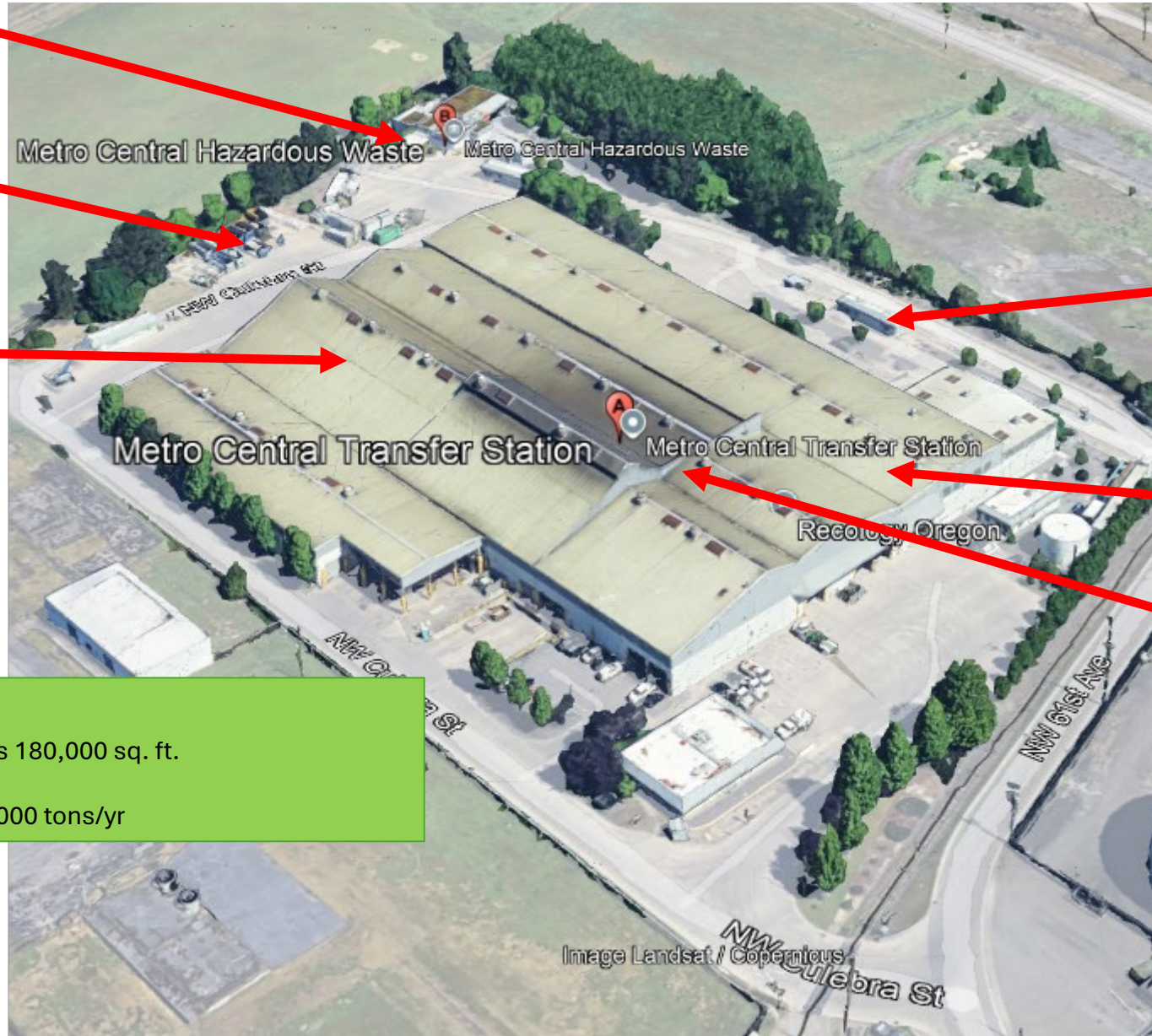
Drop Box Staging Area

Recycling Depot

Scale House

Covered Garbage Pit

Yard debris



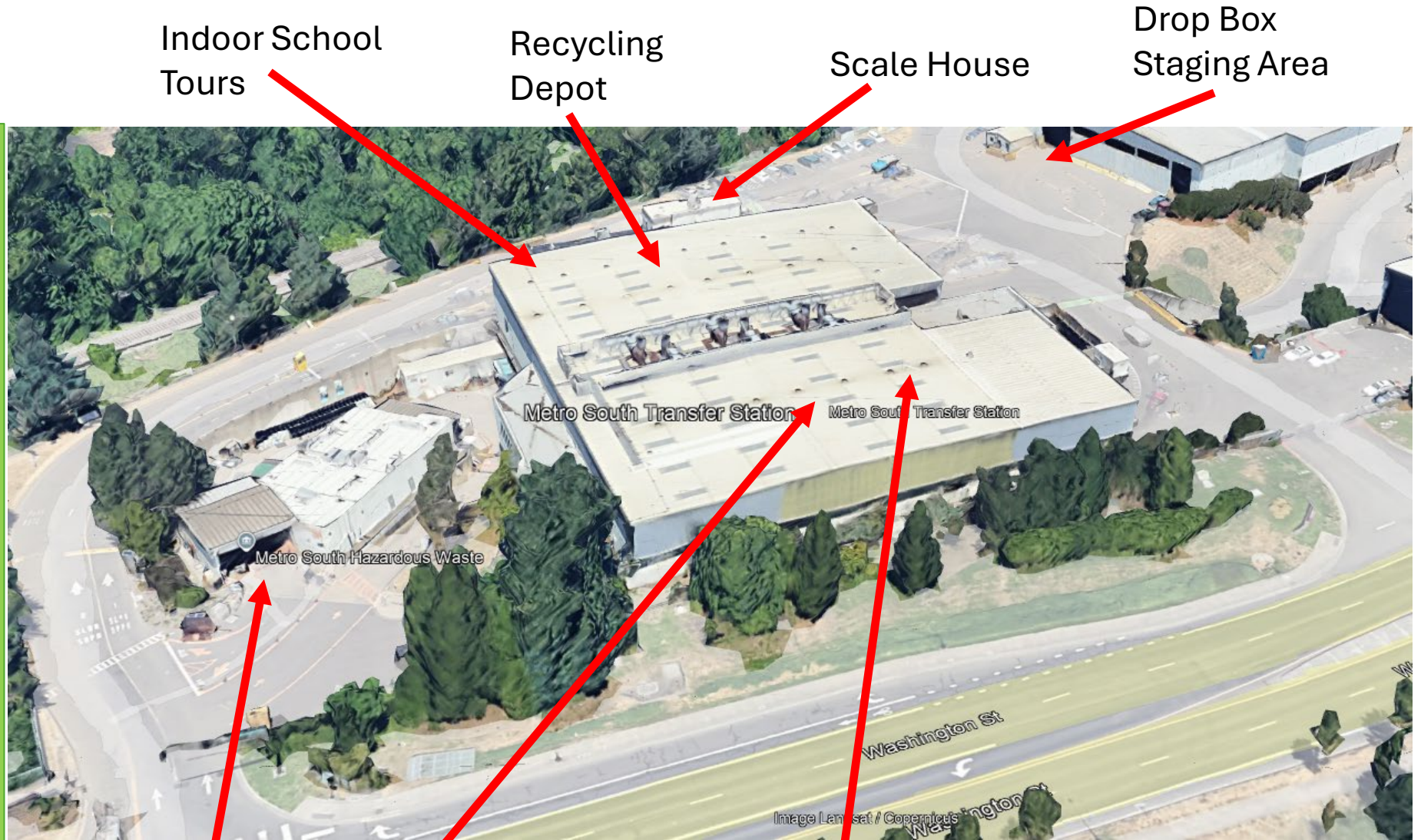
Features:

- Size: ~10.5 acres; Building is 180,000 sq. ft.
- Tip Rate: \$153.67/ton
- Tons/Year: Capacity of 624,000 tons/yr

Portland Metro South Recycling & Transfer Station

Features:

- Size: ~48,800 sq. ft. building (new one will have 60-90k sq. ft.) – Site is 9.25 acres
- Tip Rate: \$153.67/ton
- <https://www.oregonmetro.gov/sites/default/files/2021/07/16/Future-Metro-South-Basis-of-Need-070921.pdf>
- Metro South receives almost 20 percent of the region's garbage tonnage (over 268,000 tons in 2020), more than any other facility in the region;
- 40,000 household hazardous waste customers and over 293,000 self-haul customers in 2020
- 330,000 loads (customer visits) in 2020;
- in 2012 the average customers per day was 435; in 2021 that average is 730)
- Artist in Residence
- Additional recovery



Indoor School
Tours

Recycling
Depot

Scale House

Drop Box
Staging Area

Metro South Transfer Station

Metro South Transfer Station

Metro South Hazardous Waste

Washington St

Image Landsat / Copernicus

Hazardous
Waste Facility

Covered
Garbage Pit

Yard debris

Manzanita Recycling & Transfer Station

Features:

- Size: ~2.75 acres (7,100 sq. ft. Covered)
- Tip Rate: \$139/ton
- Tons/Year: 5,000
- \$2.5M (1995)

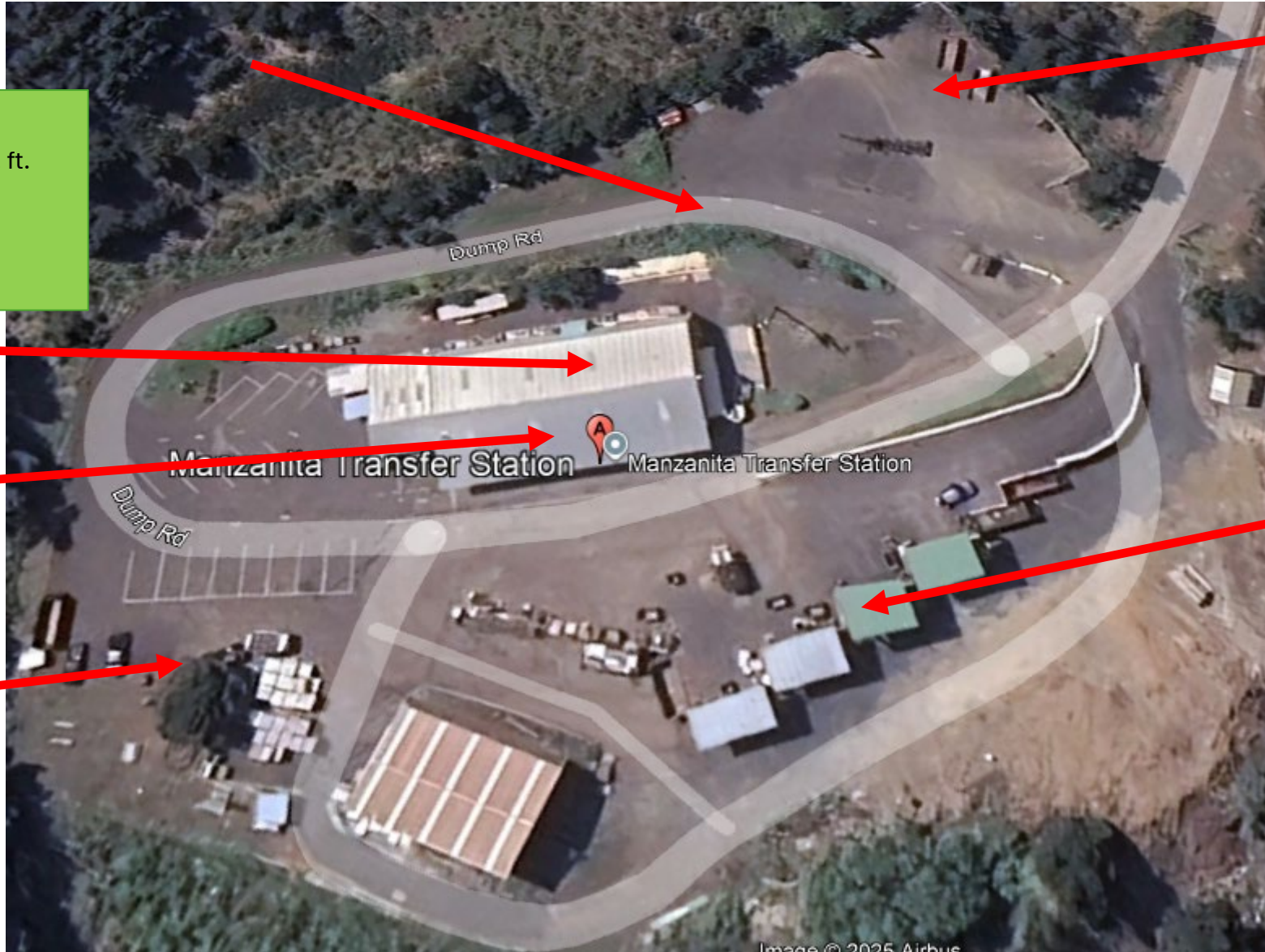
Covered Garbage Pit

Reuse Area

Yard debris

Drop Box Staging Area

Recycling Depot



Examples from other states available upon request

