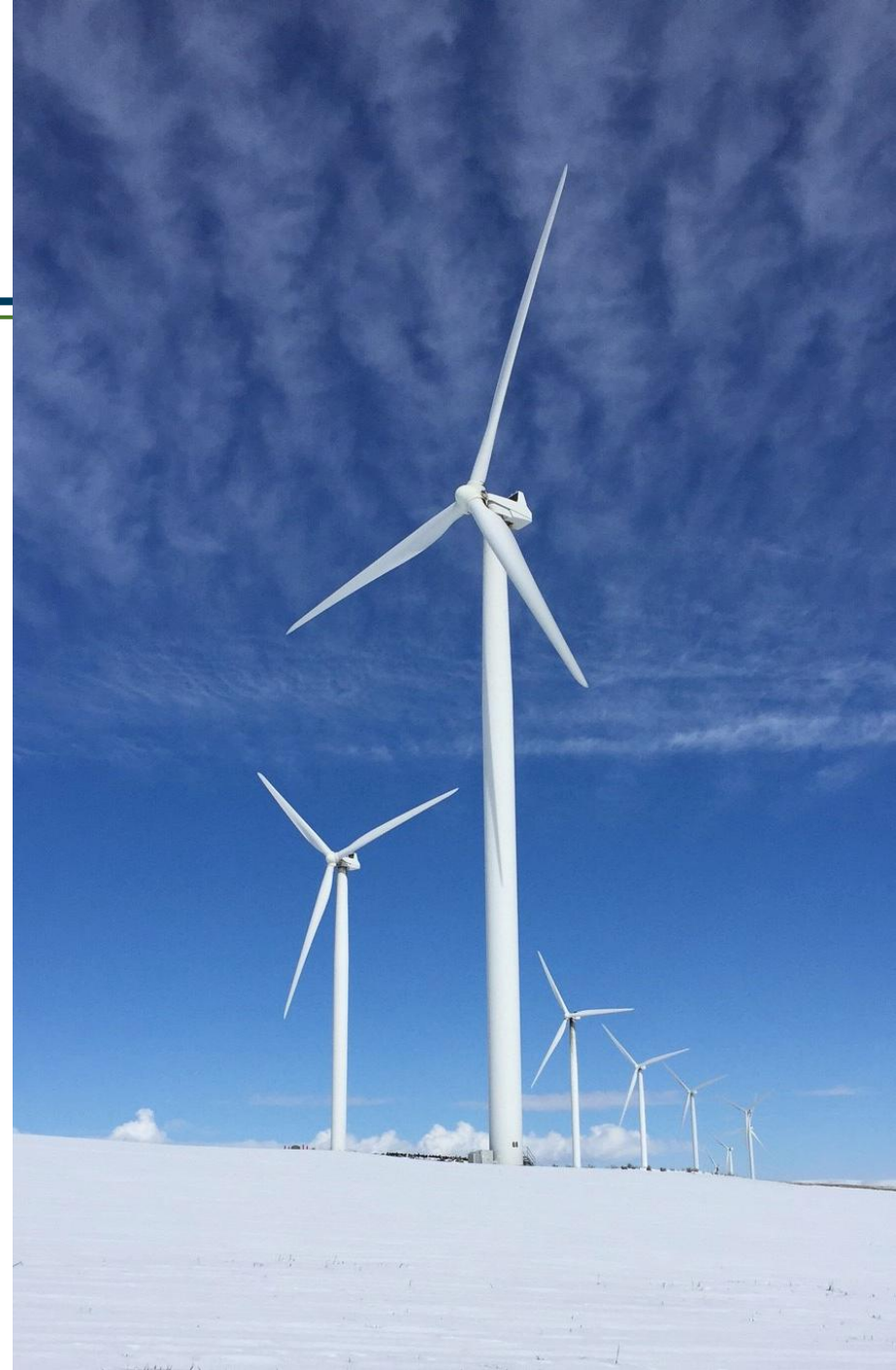


# Oregon Department of **ENERGY**

## Oregon Energy Strategy

House Interim Committee on  
Energy and Environment

Janine Benner, Director  
Edith Bayer, Energy Policy Team Lead  
January 14, 2026



# Legislative Guidance – HB 3630

---

Develop a comprehensive, economy-wide, and statewide energy strategy that:

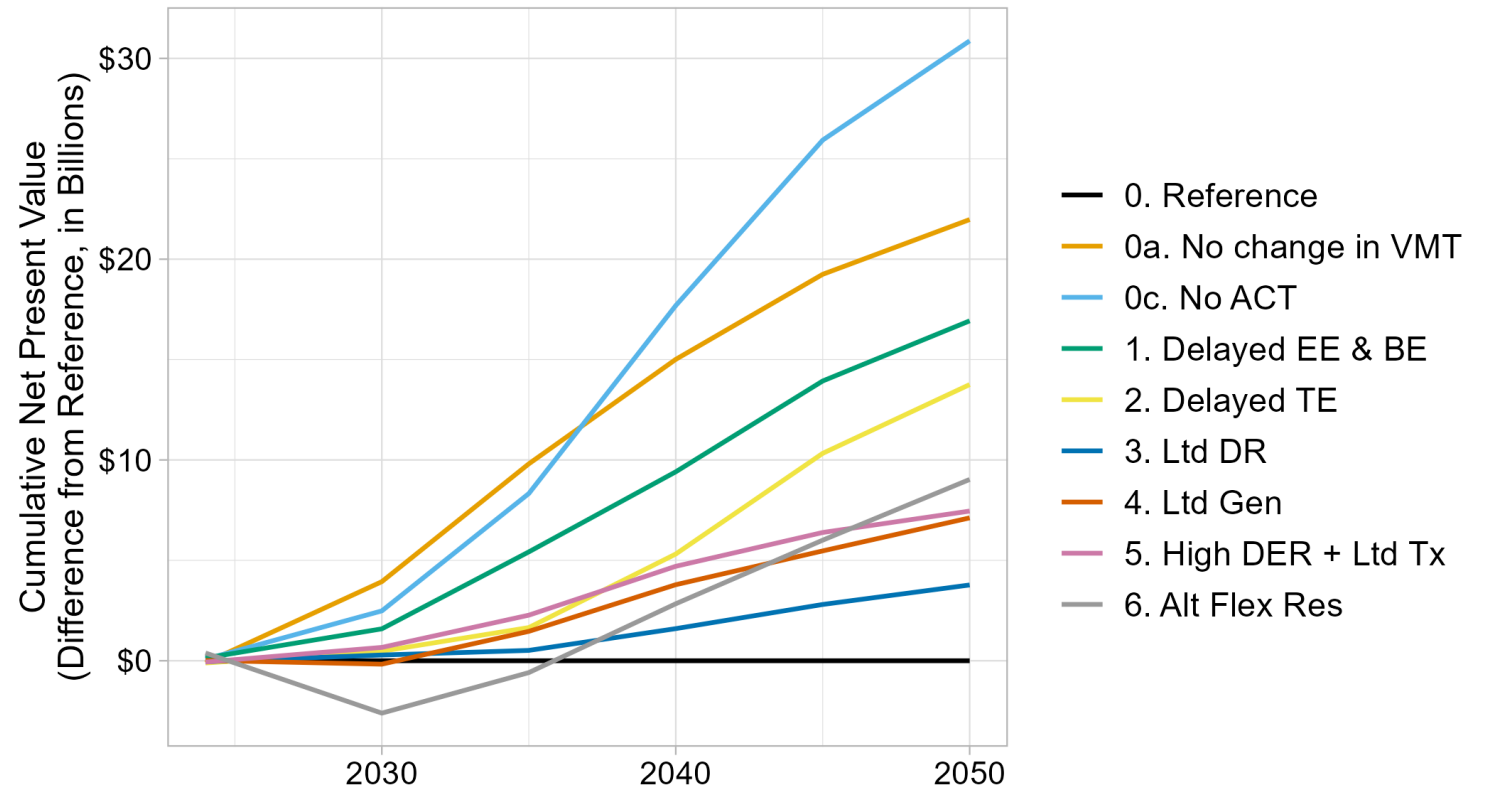
- Identifies pathways to achieve the state's current energy policy objectives
- Recommends legislation or changes to policy
- Is developed through robust engagement



# Least-cost Pathway

The Reference Scenario from the model was the least-cost pathway to meet our energy and climate objectives.

Other pathways modeled cost more.



# Engagement

---

- ▶ Tribal engagement
- ▶ Inter-Agency Steering Group
- ▶ Advisory Group
- ▶ Technical working groups
- ▶ Policy working groups
- ▶ Webinar info sessions
- ▶ Listening sessions
- ▶ Written comment periods and open portal



# The Oregon Energy Strategy

---

Pathways



Policies



Actions



# Five Pathways to Guide Oregon

---



**1. Energy Efficiency.** Advance energy efficiency across buildings, industry, and transportation sectors, including by expanding access to and appeal of multimodal transportation options, to deliver the benefits of a more efficient energy system.



**2. Clean Electricity.** Secure reliable, affordable, and clean electricity by expanding the electricity system and incorporating load flexibility.



**3. Electrification.** Increase electrification of end uses across transportation, buildings, and industry, while safeguarding reliability, promoting affordability, and maximizing opportunities to use load flexibility as a resource.



**4. Low-Carbon Fuels.** Advance the use of low-carbon fuels in the hardest-to-electrify end uses and to maintain a reliable electric grid.



**5. Resilience.** Strengthen resilience across all levels of the energy system, including utilities, communities, and customers, enhancing Oregon's ability to adapt to climate change and mitigate other risks.

*Implementation of each pathway must consider burdens and benefits to environmental justice communities and apply an equity lens to prevent further disproportionate impacts to historically and currently marginalized communities.*



# Implementing The Energy Strategy

## Near-term Priority Areas

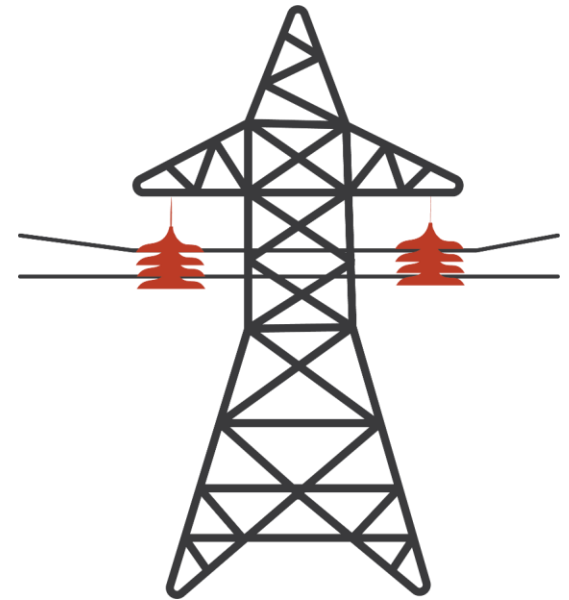
- Reliability and resilience
- Affordability and access to clean technologies
- Minimal impact on state budget



# Reliability and Resilience

---

- ✓ Review of balanced **wildfire utility liability** solutions to enable utility accountability and customer cost containment.
- ✓ Review near-term **transmission** needs, identify opportunities for state to support transmission, inform transmission entity.
- ✓ Prioritize measures that **reduce strain** on the grid (EE, PV, demand flexibility).
- ✓ Expand **energy infrastructure resilience** programs.
- ✓ Facilitate **sharing of data and joint planning** – electricity and gas.

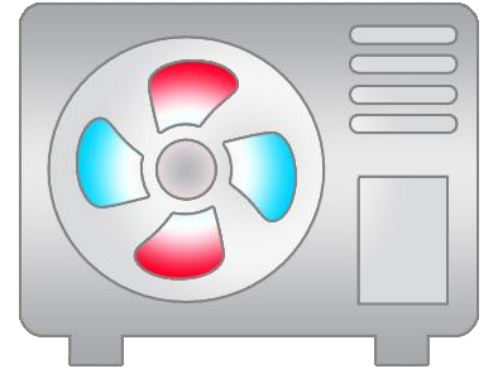




# Affordability and Access

---

- ✓ Establish and identify funding for a **revolving loan fund** for low- and no-cost loans.
- ✓ Prioritize existing incentive programs – essential **energy efficiency and weatherization** in low- and moderate- income households.
- ✓ Earmark flexible funding for **structural maintenance** (roof, walls, electrical) to enable weatherization improvements.
- ✓ Update energy efficiency and demand response programs to promote **strategic electrification**.





OREGON  
DEPARTMENT OF  
ENERGY



# Thank you!

<https://energystrategy.oregon.gov>