



Instructional Time Requirements

House Education Committee

January 13, 2026

Dr. Candice Castillo, Deputy Director of Academics

Dr. Alexa Pearson, Assistant Superintendent, Office of Teaching, Learning, and Assessment

Susan Payne, Education Standards & Systems Specialist

Definition of Instructional Time

Time in which students are both:

- **Engaged in regularly scheduled instruction, learning activities, or learning assessments** that are designed to meet Common Curriculum Goals and academic content standards; and
- **Learning under the direction and supervision of a licensed or registered teacher**, licensed CTE instructor, licensed practitioner, or Educational Assistant who is assigned instructionally related activities and is working under the supervision of a licensed or registered teacher

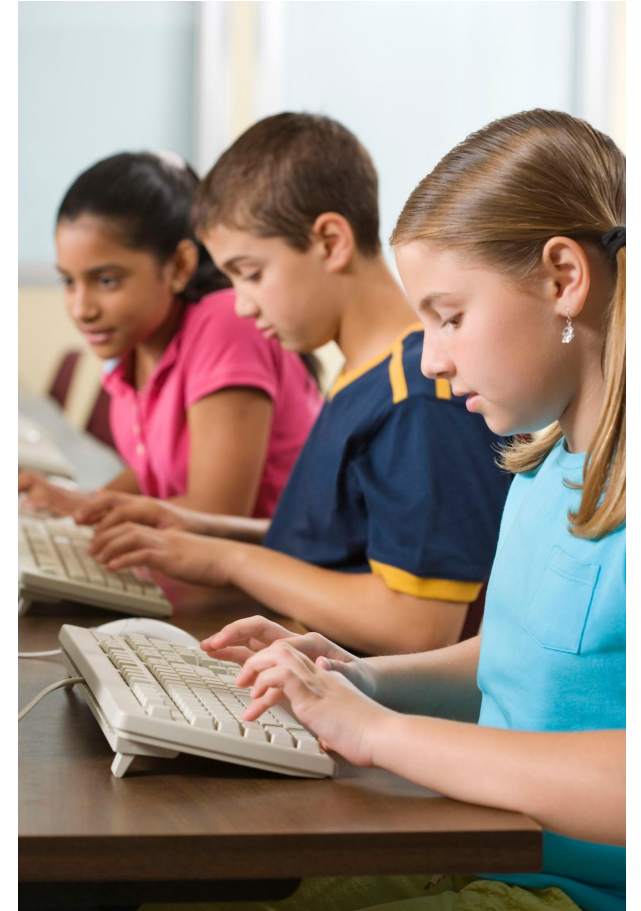
[OAR 581-022-0102 Definitions](#)



Instructional Time Shall Include:

- Time that a student spends traveling between the student's school and a CTE center, internship, work experience site, or post-secondary education facility;
- Time that a student spends in statewide performance assessments; and
- Up to fifteen minutes each day of the time that a student spends consuming breakfast in the classroom if instruction is being provided while the student is consuming breakfast.

[OAR 581-022-0102 Definitions](#)



Instructional Time Shall Not Include:

- Passing time between classes
- Recess*
- Non-academic assemblies, non-academic field trips, participating in optional school programs
- Study periods or advisory periods where attendance is not required and no instructional assistance is provided

[OAR 581-022-0102 Definitions](#)



Minimum Requirements



OAR 581-022-2320 Required Instructional Time

Each school district shall ensure that at least 92% of all students in the district and at least 80% of all students at each school operated by the district are scheduled to receive annually the following minimum hours of instructional time:

- (A) Grade 12 — 966 hours;
- (B) Grades 9–11 — 990 hours; and
- (C) Grades K–8 — 900 hours.

Additional Allowances

With approval of the local school board, districts **may** include:

- Up to 60 hours of **recess for grades K - 3**; (or up to 30, if a kindergarten program offers less than 900 hours);
- Up to 30 hours for **staff professional development**; and
- Up to 30 hours for **parent teacher conferences**

[OAR 581-022-2320 Required Instructional Time](#)



Online and Remote Learning



Oregon Department of Education

For online instruction, **up to one hour per course per day** may be counted as instructional time where the following criteria are met:

(A) Every student has **access to a licensed or registered teacher** through in-person, telephone, or electronic means for each course taken; and

(B) Every student has **regular contact with school personnel for the purpose of attendance and progress monitoring** as outlined in the policies maintained by the Oregon Department of Education.

*Additional guidance can be found in Appendix B of ODE's [Online & Remote Learning Guidance](#), as well as questions 7-12 of the [Remote and Online Learning Policy FAQ](#)



Monitoring & Enforcement

Division 22 Standards: The Big Picture



- All Oregon administrative rules (OARs) set out in Chapter 581, Division 22, Standards for Public Elementary and Secondary Schools.
- The standards that the Oregon legislature or the State Board has determined must be met in order to be a standard school district.
- Compliance with these rules ensures a baseline level of service across the state.

Division 22 Standards: Accountability

The Legislature has directed the Superintendent of Public Instruction to enforce the Division 22 Standards through a process that is set out in ORS 327.103.

- All districts are presumed to be in compliance until a deficiency is found.
- Once a deficiency is found, ODE works with the district to get the district back in compliance.
- Deficiencies must be corrected before the beginning of the next school year.
- If a district fails to come back into compliance after an opportunity for corrective action, ODE may withhold a portion of the district's State School Fund monies.

Division 22 Standards: Monitoring Compliance

Division 22 Assurances Process

Require school districts to certify to their local community and ODE that they are in compliance with Division 22 Standards.



**SPECIFIC
POINT IN TIME**

Includes Ongoing Coaching & Professional Learning

Assist districts in understanding and complying with the standards.



CONTINUOUS

Complaint Process

Enforce school districts to meet the standards upon the filing of an appeal.

Assurances Process

Combined Accountability Model

Local Accountability

Districts must:

- Report to their local school board (by Nov 1)
- Make a report available on the district website



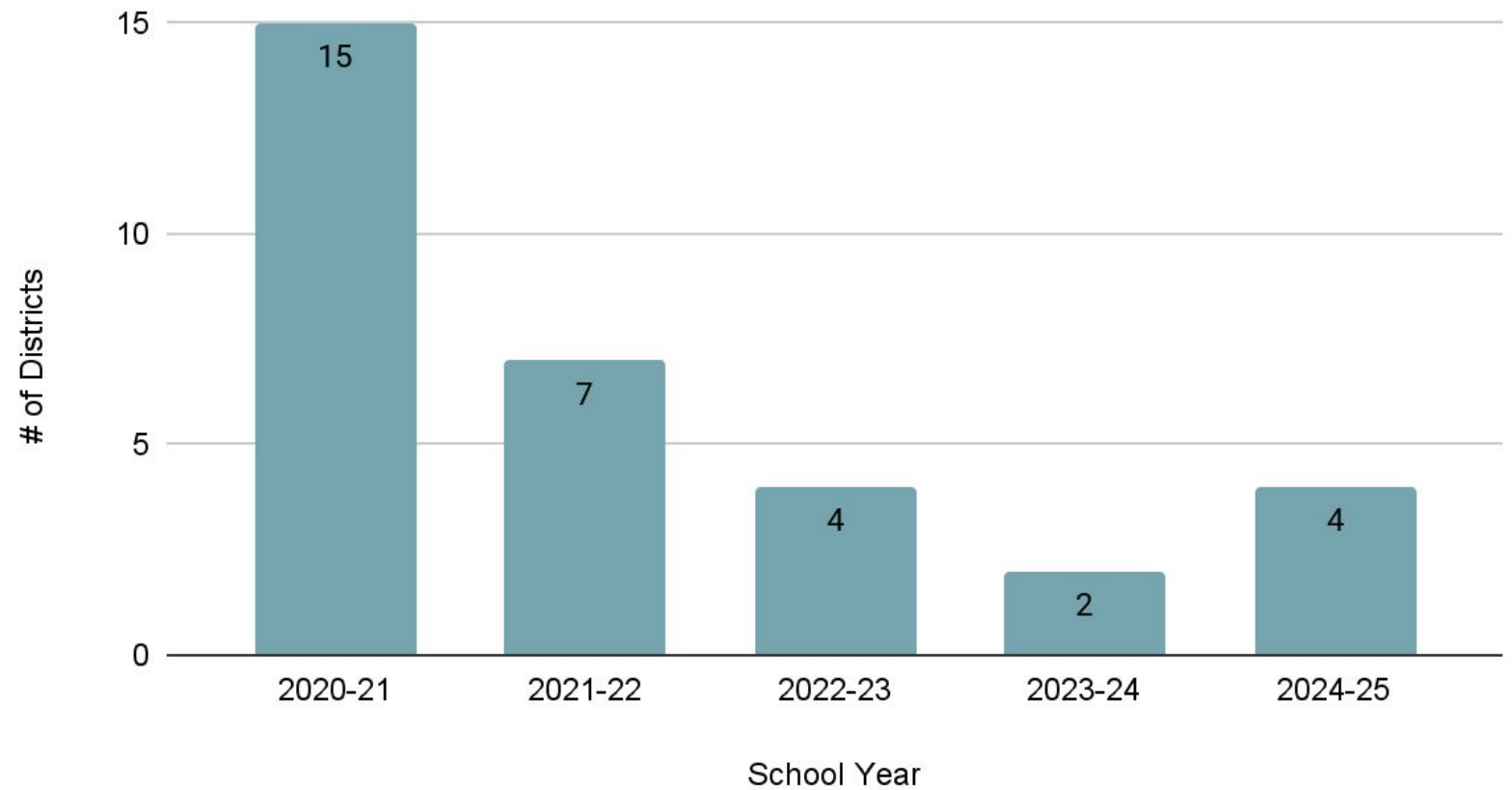
State Accountability

- Districts must submit assurances to ODE (by Nov 15)
- ODE reviews all submissions and follows up with districts that have self-reported as being out of compliance



Compliance Data from Annual Assurances

2020-2025 Non-Compliance Reports: Instructional Time





Questions?