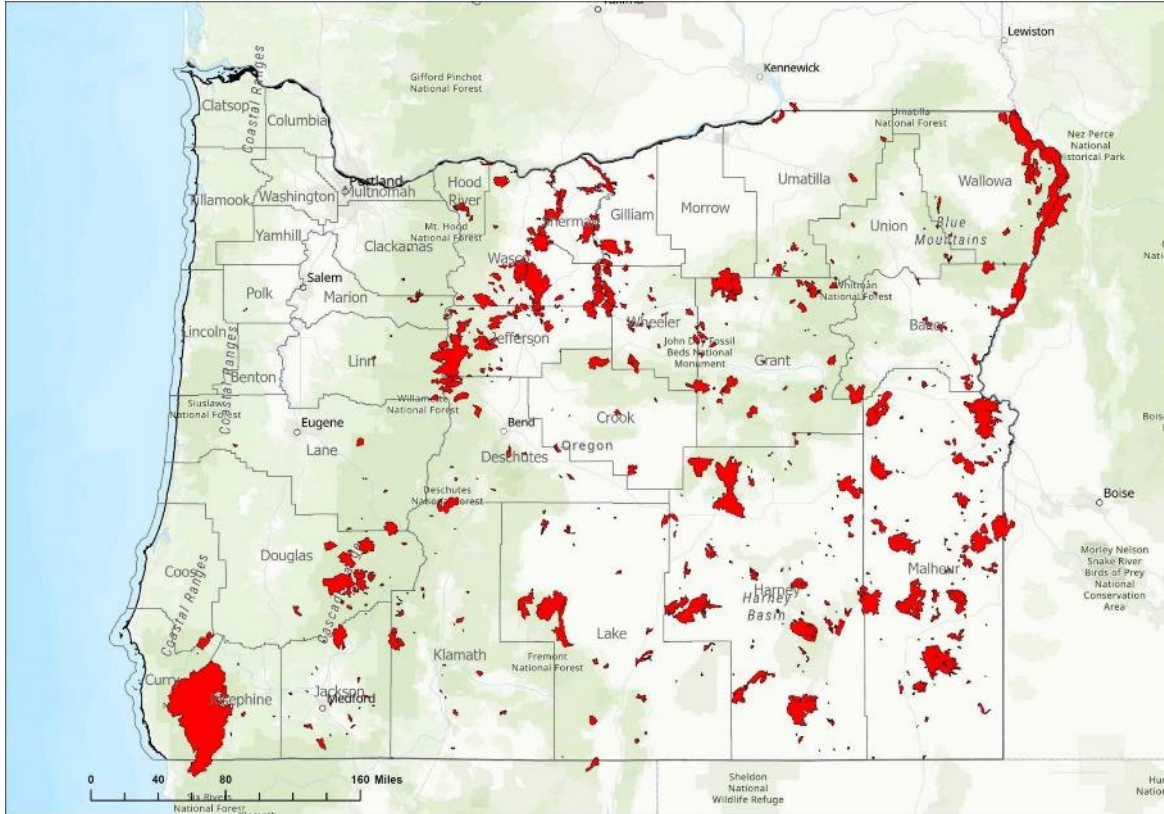


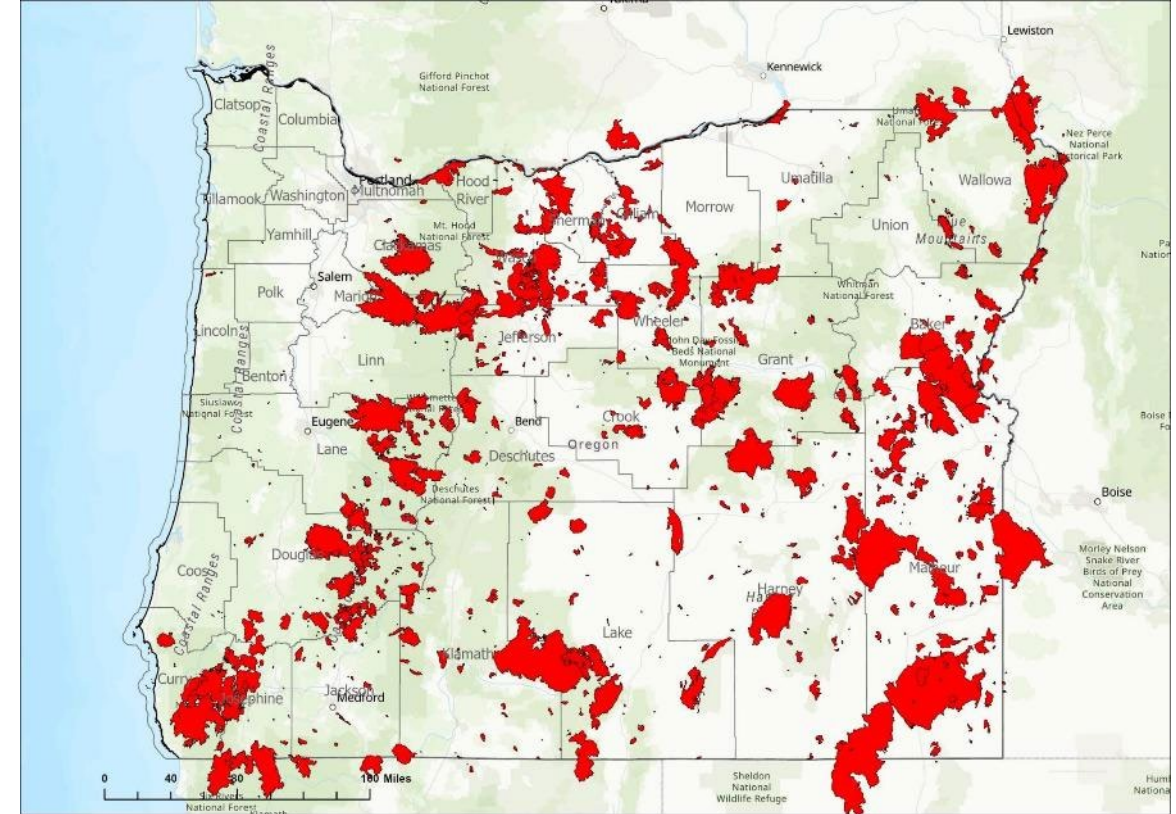
# **CREATING A MORE RESILIENT OREGON**



# THE DECADAL SHIFT



**2000-2011**



**2012-2024**

# WILDFIRE RESILIENCY IN OREGON

## Emergency support function

- How the state organizes fire
- ESF 4: ODF & OSFM

## Wildfire resiliency (mitigation)

- Landscape resiliency
- Fire-adapted communities

## National cohesive strategy

1. Resilient Landscapes
2. Fire-Adapted Communities
3. Safe and Effective Wildfire Response



# WHAT IS LANDSCAPE RESILIENCY?

Healthy, adaptable lands that can support Oregon's social, economic, and ecological needs for future generations.

Many tools help landscapes become more resilient:

- Thinning
- Prescribed fire
- Invasives treatment
- Fuels mitigation
- Post-fire restoration choices





# WORK ON FEDERAL LANDS



**Left:** Invasive juniper removal, Good Neighbor Authority

**Above:** Commercial thinning with road improvements, removal of juniper and non-commercial vegetation and fungicide treatment, Good Neighbor Authority





# FEDERAL ASSISTANCE PROGRAMS

## Chiloquin Community Forest and Fire Project





# STATE ASSISTANCE PROGRAMS

Central Oregon District



# FIRE-ADAPTED COMMUNITIES

## Grants

- Community Wildfire Risk Reduction (CWRR): \$18 million, 105 recipients
- CWRR for the Built Environment: \$3 million, 40 recipients
- 2023 Oregon Fire Service Capacity Program: \$13 million, 33 recipients
  - 14 prevention staff, 34 firefighters, 5 split positions
- Strategic investments: \$2.6 million

## Defensible Space Program

- 357 trained assessors from 97 agencies
- 6,011 assessments





# HOME HARDENING

- House Bill 3940
- Wildfire Prepared Structure Program:
  - **Wildfire loss program:** help upgrade building materials to fire hardened materials during the rebuilding process for homes damaged or destroyed during a wildfire
  - **Individual retrofit program:** assist homeowners retrofit their homes to increase the likelihood of the structure surviving a wildfire
  - **County retrofit program:** similar to the individual retrofit program but run through participating counties



# PUBLIC/PRIVATE PARTNERSHIPS

- Insurance Institute for Business & Home Safety
- Memorandum of understanding
- Live burn demonstration





# LOOKING AHEAD

- Collaboration between the Oregon Department of Forestry and the Oregon State Fire Marshal
- Demonstrate landscape resiliency and fire-adapted communities acting together
- Continued investments



# THANK YOU

