

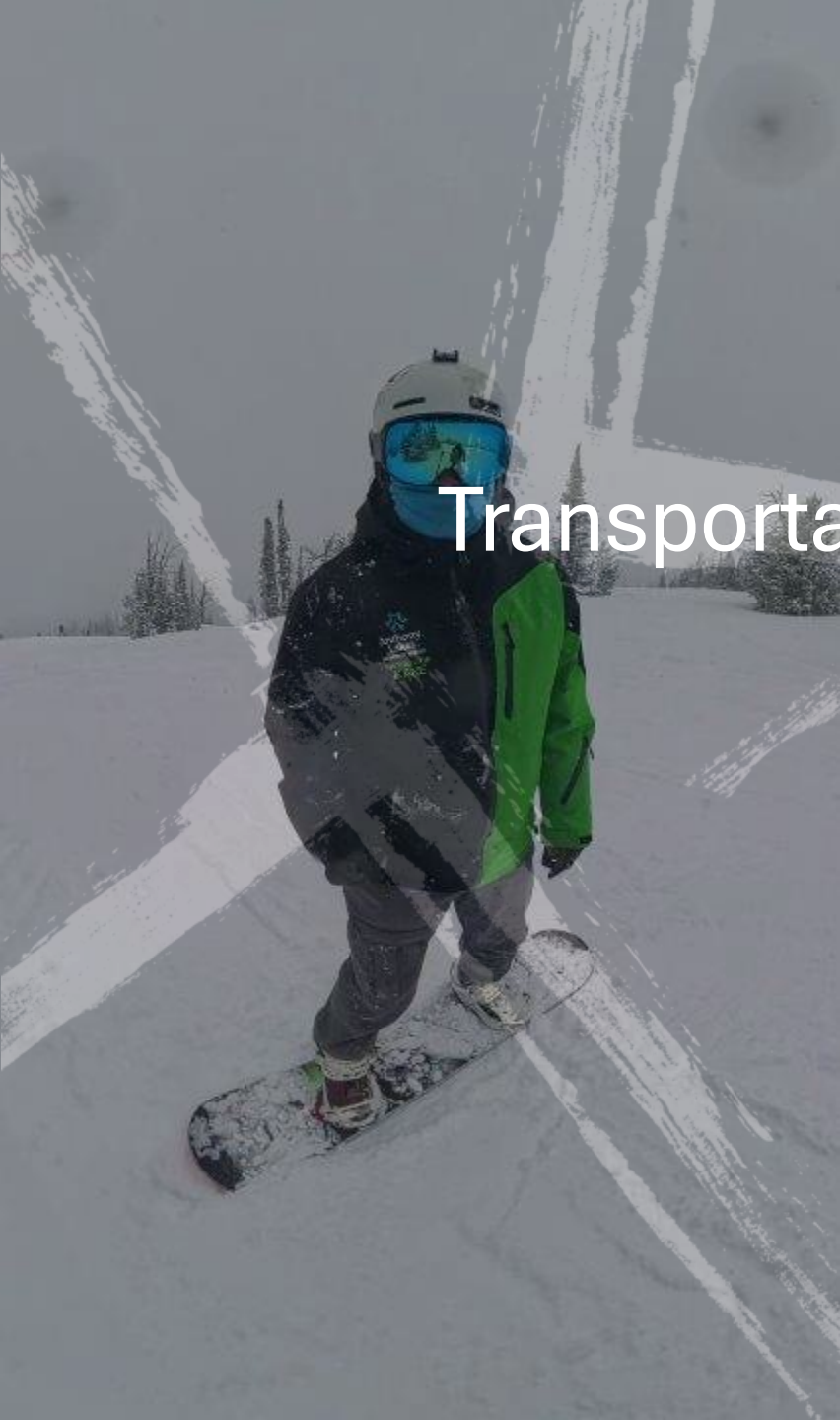
Transportation

Enhancing Mobility in our Community



**Community Connection
of Northeast Oregon, Inc.**





SPEAKER

Kane Lester
Transportation Program Manager at CCNO
Kane@ccno.org





Community Connection of Northeast Oregon, Inc.

Click on a card to get info about a program!



[Emergency Housing](#)



[Energy Assistance](#)



[Family Caregiver Support](#)



[Food Pantries](#)



[Foreclosure Avoidance](#)



[Homeownership & Purchase Programs](#)



[Housing Rehabilitation](#)



[Housing Weatherization](#)



[IDA Initiatives](#)



[In-home Care
\(VCL and VA\)](#)



[Meal Sites and Senior Nutrition](#)



[Home-Delivered Meals](#)



[Public Transit](#)



[Rental Assistance](#)



[Senior Services](#)



[Veteran Programs](#)



[Workshops](#)



Connect With Your Community



Community Connection of Northeast Oregon, Inc.

OPERATIONS

- Providing public transportation over 40 years and starting with meal site pick up for seniors.
- During peak operations we have 20 vehicles on the road.
- Only public transportation service for 3 counties.
- Multiple modes of transportation.



Service Types

- Deviated fixed routes.
- Demand response rides in town.
- Demand response rides out of town.
- Medical rides, including non-emergency stretcher rides.
- Intercommunity routes.





Community Connection of Northeast Oregon, Inc.

Service Types by County

Baker

- 1 Deviated fixed route
- 1 Intercity Route
- 6 Demand response routes
 - In town demand response
 - Out of town demand response
 - Rides to wellness
 - Veterans ride to wellness
 - Brokerage
 - Contracts

Union

- 2 Deviated fixed routes
- 6 Demand response routes
 - In town demand response
 - CAT link (Connecting All Towns)
 - Rides to wellness
 - Brokerage
 - Contracts
 - Title XIX

Wallowa

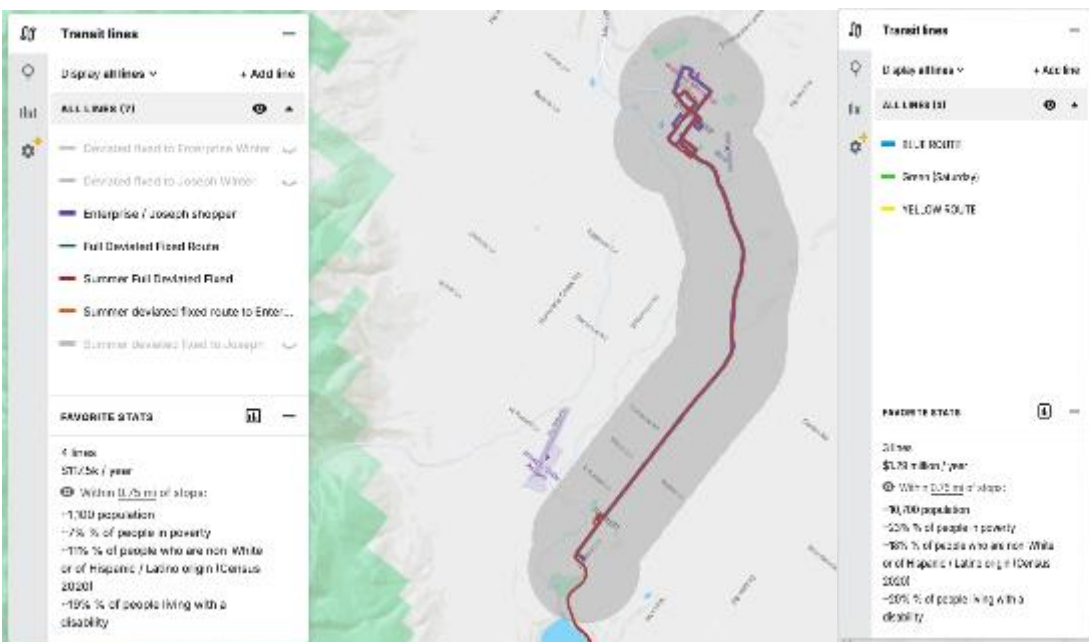
- 1 Deviated fixed route
- 1 Intercity Route
- 6 Demand response routes
 - In town demand response
 - Out of town demand response
 - Rides to wellness
 - Veterans ride to wellness
 - Brokerage
 - Contracts



Community Connection of Northeast Oregon, Inc.

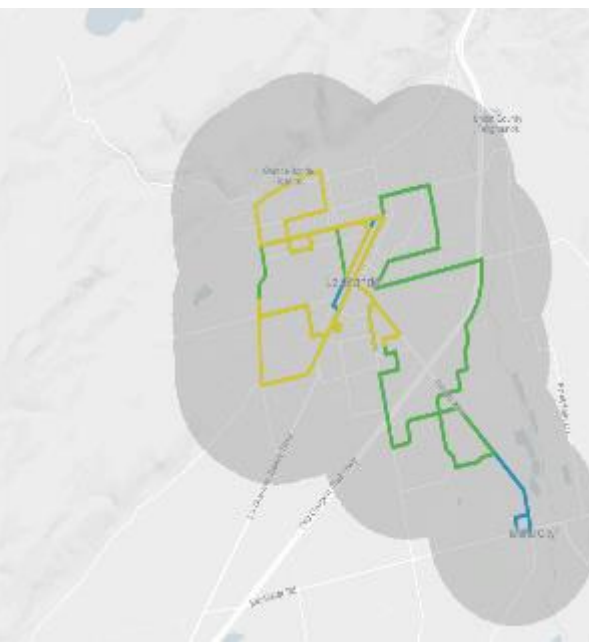
Deviated Fixed Routes

Wallowa County



Enterprise/Joseph

Union County



La Grande

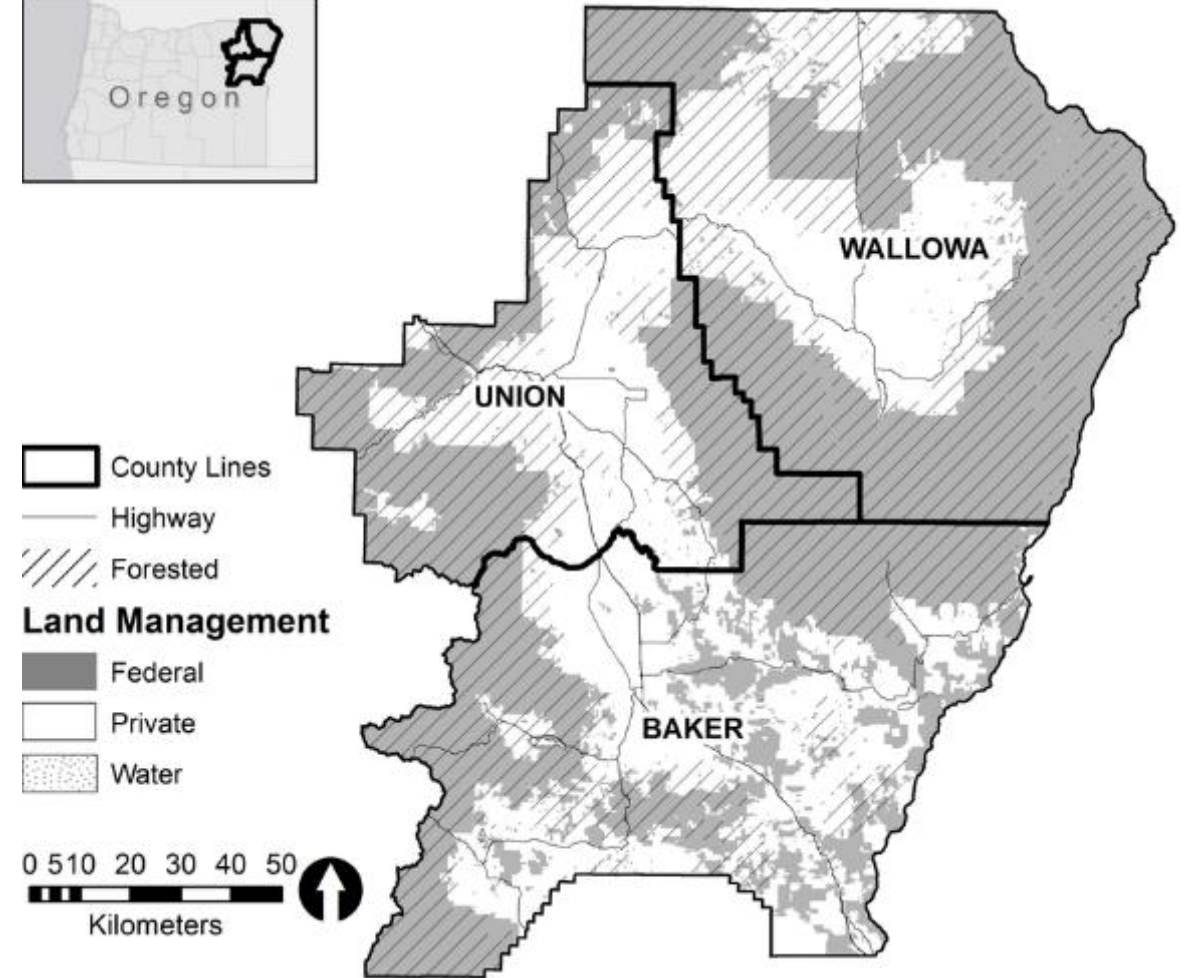
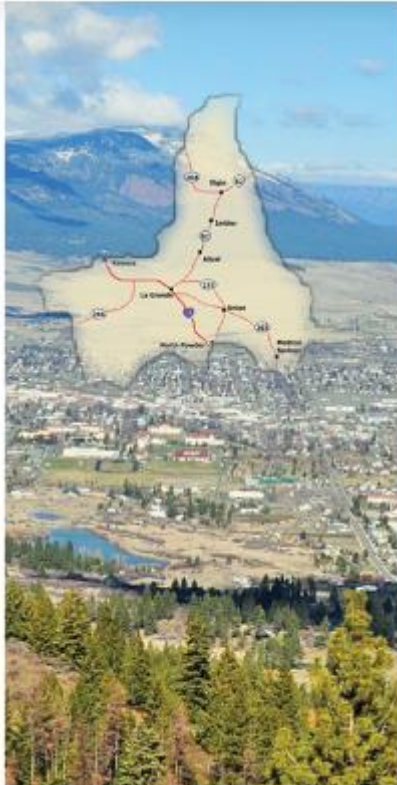
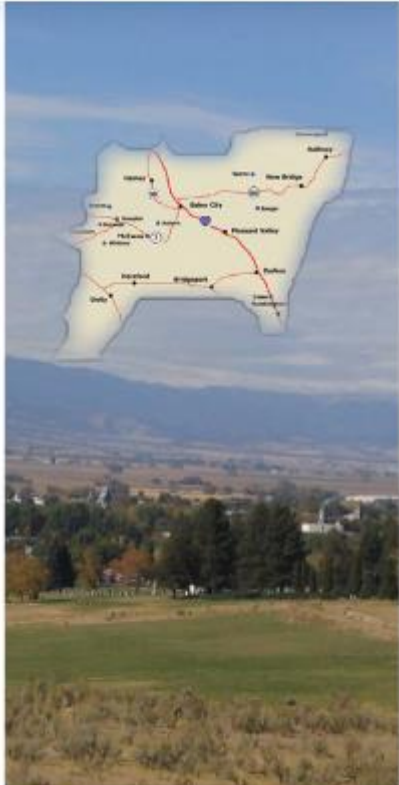
Baker County



Baker City



Roughly 8,259 square miles. About the size of Massachusetts



Combined Population of Roughly 50,520
 Baker -16,796
 Union – 26,192
 Wallowa – 7,532



GRANTS and FUNDING

- **5311**
 - CCNO direct recipient
 - Roughly 36% of total budget
- **5310**
 - 3 counties QE, CCNO sub-recipient
 - Roughly 10% of total budget
- **STIF intercommunity**
 - CCNO direct recipient
 - Roughly 4% of total budget
- **HRVT (Highly Rural Veterans Transportation)**
 - Only Baker and Wallowa counties qualify. CCNO direct recipient
 - Roughly 2% of total budget
- **STIF (Statewide Transportation Improvement Fund)**
 - 3 counties QE, CCNO sub-recipient
 - Roughly 47% of total budget
- **GOBHI (Brokerage)**
 - Funding used for misc. Expenses and match for grants
- **Contracts**
 - CCNO has various small transportation contracts
 - Less than 1% of CCNO budget
- **Title XIX**
 - Union County
 - Less than 1% of CCNO budget

Let's Talk Numbers Ridership FY25



Riders- 74,647, More than the population combination of all three counties in one year by roughly 27,000 rides.

Miles- 442,067, Almost to the moon and back in one year.

Revenue Service Hours- 24,623

Seniors – 25,163 rides,

34 % total ridership

People with disabilities- 10,522 rides

14% total ridership

Students grades 9th-12th – 3,487 rides

5% total ridership

Veterans – 428 rides

48% of riders for CCNO are estimated to be Public Transit Dependent (No other forms of reliable transportation).

Other forms of transportation such as Uber, Lyft, and Taxi services are minimal. Estimated 5 vehicles total and are expensive.



Community Connection of Northeast Oregon, Inc.

The Daily Ride That Changed Everything

At CCNO Public Transportation, we get the privilege of serving many remarkable riders, but one of our most cherished passengers is an 80-year-old woman with developmental delays who brightens our buses every weekday. She lives in an assisted living facility and, like many older adults in rural communities, she faces both physical and social challenges. But thanks to CCNO Public Transportation, she doesn't face them alone.

Every morning, she boards our Demand Response bus using the lift, greeted by drivers who know her routines, her smile, and her favorite seat. Her trip may be short, but its purpose is big: connection.

She rides to the Baker Senior Center for lunch with friends, weekly bingo, card games, and the simple joy of being part of a community that loves her presence. On other days, our bus takes her shopping, out for small treats in town, or to enjoy community events that mean the world to her. These outings aren't just activities—they're her lifeline.

Without CCNO Public Transportation, she would spend most days confined to the walls of her assisted living home. Instead, she gets to experience independence, laughter, and human connection. Her drivers often say she's the highlight of their route, and she tells staff that riding the bus is her "favorite part of the day."

Because of CCNO's commitment to accessible, compassionate transportation, she continues to live not just safely—but joyfully.

And that's the heart of what public transit is all about.



Community Connection of Northeast Oregon, Inc.

If you ever feel useless
remember there are bus
and taxi cars in the movie
where everyone is a car



Kane Lester, Transportation Program Manager

Community Connection of Northeast Oregon, Inc.

2802 Adams Avenue

La Grande, OR 97850

Phone: 541.963.3186

<mailto:Kane@ccno.org>



**Community Connection
of Northeast Oregon, Inc.**
