



Pacific Power
Rocky Mountain Power

Pacific Power 2025-2026 Winter Preparedness Update

House Emergency Management and
Veterans committee

Monday, November 17, 2025



Agenda

Situational Awareness

- Meteorology
- Wildfire Intelligence

Operational Preparedness

Emergency Management

- Internal
- External

Communications



Sat Jan 13

Updated 11:15 AM

A winter storm continues Saturday.

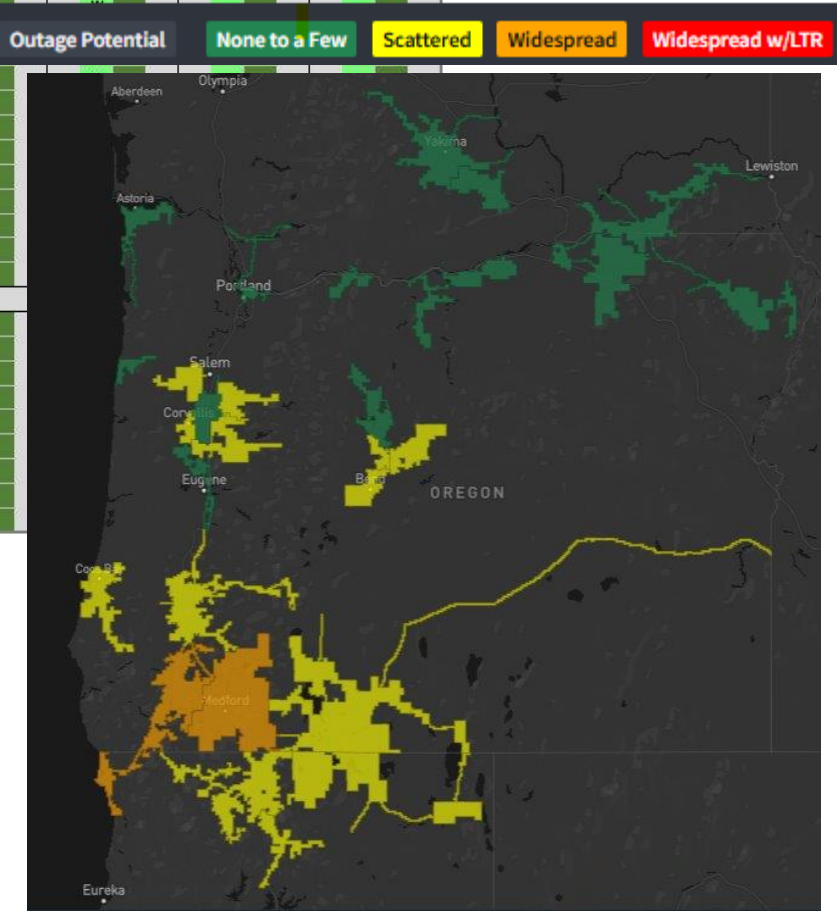
- In the Willamette Valley, Portland, and some of the Oregon Coast, ice-falling rain amounts will range from .10" to 1.0". Snow areas may end up with over 5.25" of ice.
- Heaviest snow & icing: 0800-1400.
- Areas east of the Cascades, from Central Oregon south to Mt. Shasta could see several inches of snow in the valley floors. Blowing snow may be a concern.
- Strong wind gusts may bring impacts to the coast and the north & central Oregon coast.
- Heavy rain may lead to isolated flooding in Crescent City and Eureka-Pais districts.
- The weather eases on Sunday, with a break from impactful weather through Tuesday afternoon.



Meteorology

- Five Day Forecast
- Outage Impact Focused
- Weather Station Network
- Advancement in Machine Learning Tools
- Implementation of Internal Weather Research Forecast Model Multi-Member Ensemble

PACIFIC POWER SYSTEM IMPACTS FORECAST MATRIX											
WEATHER-RELATED OUTAGE POTENTIAL (Wx) and WILDFIRE RISK (F)											
NORTH WIRES		11/4 (Tue)				11/5 (Wed)		11/6 (Thu)		11/7 (Fri)	
		Wx	F	Circ	Cust	Wx	F	Wx	F	Wx	F
Clatsop Area	Clatsop	W		0	0	W		W			
	Enterprise Area			0	0	W		W			
	Hood River Area			0	0	W		W			
	Hermiston			0	0	W		W			
	Pendleton			0	0	W		W			
	Portland Area			0	0	W		W			
	Walla Walla Area			0	0	W		W			
	Sunnyside			0	0	W		W			
	Yakima Area			0	0	W		W			
CENTRAL WIRES											
Albany Area	Albany	W		0	0	W		W			
	Corvallis	W		0	0	W		W			
	Cottage Grove	W		0	0	W		W			
	Dallas	W		0	0	W		W			
	Junction City	W		0	0	W		W			
	Lebanon	W		0	0	W		W			
	Stayton	W		0	0	W		W			
Bend Area	Bend	W		0	0	W		W			
	Madras	W		0	0	W		W			
	Prineville	W		0	0	W		W			
	Redmond	W		0	0	W		W			
Coos Bay Area	Coos Bay	W		0	0	W		W			
Lincoln City Area	Lincoln City	W		0	0	W		W			
Roseburg Area	Roseburg	W		0	0	W		W			
SOUTH WIRES											
Crescent City Area	Crescent City	W		0	0	W		W			
Grants Pass Area	Grants Pass	W		0	0	W		W			
Klamath Falls Area	Alturas	W		0	0	W		W			
	Klamath Falls	W		0	0	W		W			
	Lakeview	W		0	0	W		W			
	Tulelake	W		0	0	W		W			
Medford Area	Medford	W		0	0	W		W			
Yreka Area	MT Shasta	W		0	0	W		W			
	Yreka	W		0	0	W		W			



Operational Preparedness

Evaluate Weather
Impact



Prepare Resource
Needs Movement



Verify Specialized
Equipment Needs



On Board Contract
/ Out of District
Personnel



Personnel Safety
and Preparedness
(Including Mobile
Communications)



Equipment
Readiness and
Staging



Wildfire Intelligence Center

- Year-Round All-Hazard Monitoring
- Direct Support to Control Centers
- Standardized Escalation and Emergency Coordination
- Technology-Driven Risk Reduction
- Focus on Public Safety and University Coordination
- CAD to CAD partnership through the Portland Dispatch Center Consortium



Wildfire Intelligence Center – All Hazards Team 24 x 7 x 365

Emergency Management & Response

Internal





- Pre-season Coordination
- Master Service Agreement – Logistical / Storm Support
- Emergency Response Plan
- Emergency Coordination Center
- Finalizing Hazard Risk Assessment

External


- Partner Engagement
 - Public Safety Partners (county and state)
 - Other utilities
 - Community Based Organization
- Work Group participation
- Tribal and Access and Functional Needs

Communications

- Seasonal outreach campaign
- Incident Specific Communication Strategy
- Post Event Lessons Learned / Town Hall
- Customer / Partner Feedback Informs Improvement




 **Pacific Power** 
Published by Hootsuite  · January 8 at 12:15 PM · 

Pacific Power is monitoring a winter storm approaching the Pacific Northwest regions in Oregon, California and Washington on Monday night. The forecast weather indicates strong winds could result in system interruptions, causing possible power outages through early Wednesday morning. Learn More: <https://ow.ly/bUhb50QoWRc>



prepared TO RESPOND

[See insights and ads](#) [Boost post](#)

   17

2 comments 21 shares

Questions

Nora Yotsov

Director, Emergency Management

Eleonore.Yotsov@PacifiCorp.com

503-319-6819 cell