



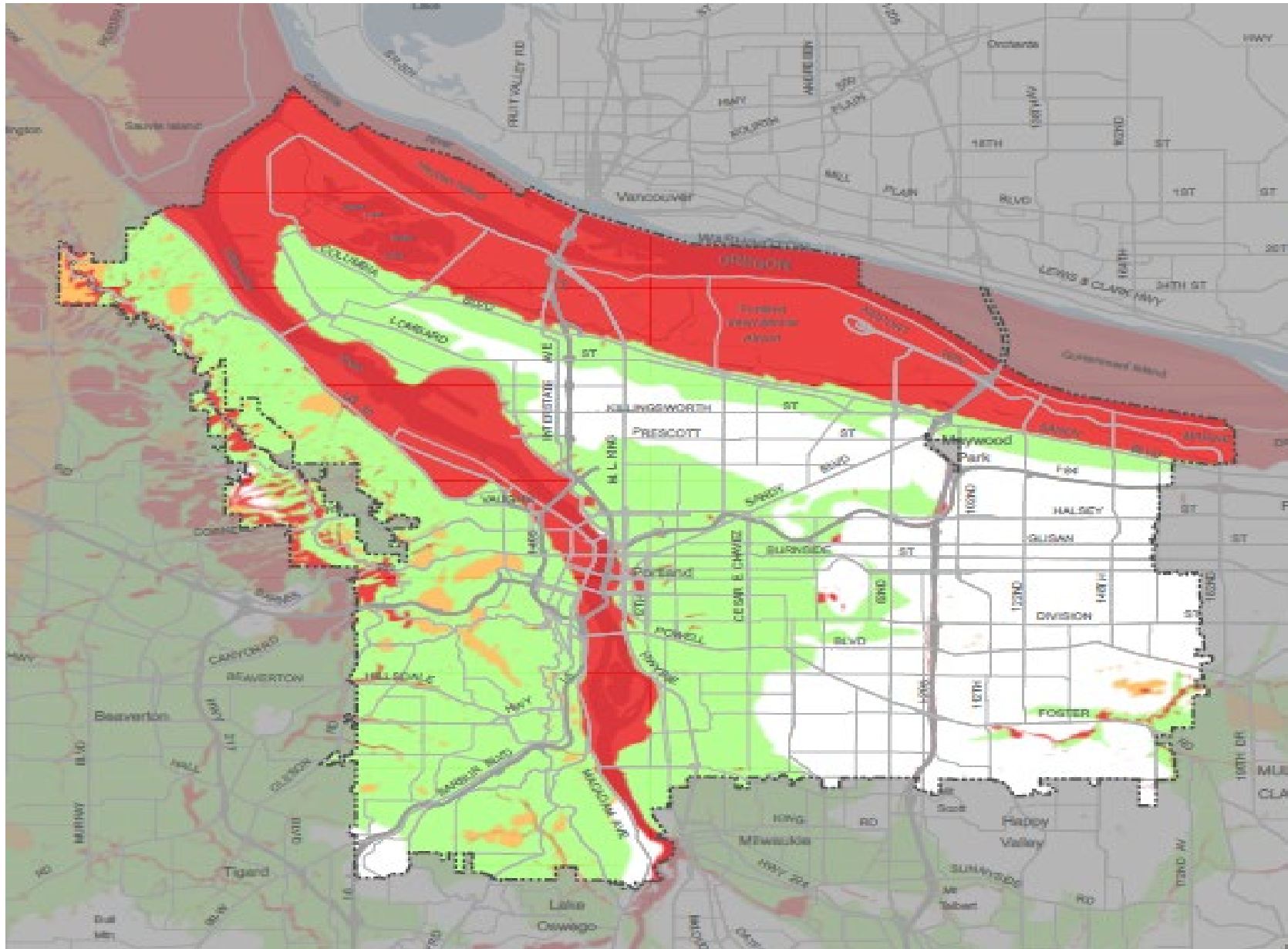
Islanding in Portland

Rachit Nerwal, Bureau of Emergency Management
Kristin Hull, Bureau of Transportation

September 29, 2025



Liquefaction Risk in Portland



1/24/2025

City of Portland ||
Bureau of Planning and Sustainability ||
Geographic Information Systems

Hazard Maps Liquefaction Risk

Legend

Cascadia Subduction Zone
M 9.0 earthquake,
Probability of Liquefaction
(DOGAMI O-18-02)

- None
- Low (1% - 5%)
- Moderate (6% - 15%)
- High (16% - 30%)
- Urban Service Boundary



0 1 2 Miles

The information on this map was derived from City of Portland GIS data. City of Portland is not responsible for any errors or omissions on this map, but it is provided "as is". The City of Portland is not responsible for any consequences or damages resulting from the use of this map.

The City of Portland is not responsible for any errors or omissions on this map, but it is provided "as is". The City of Portland is not responsible for any consequences or damages resulting from the use of this map.



THE BUREAU OF PLANNING
& SUSTAINABILITY

Copyright 2002 by the City of Portland, Oregon. All rights reserved.

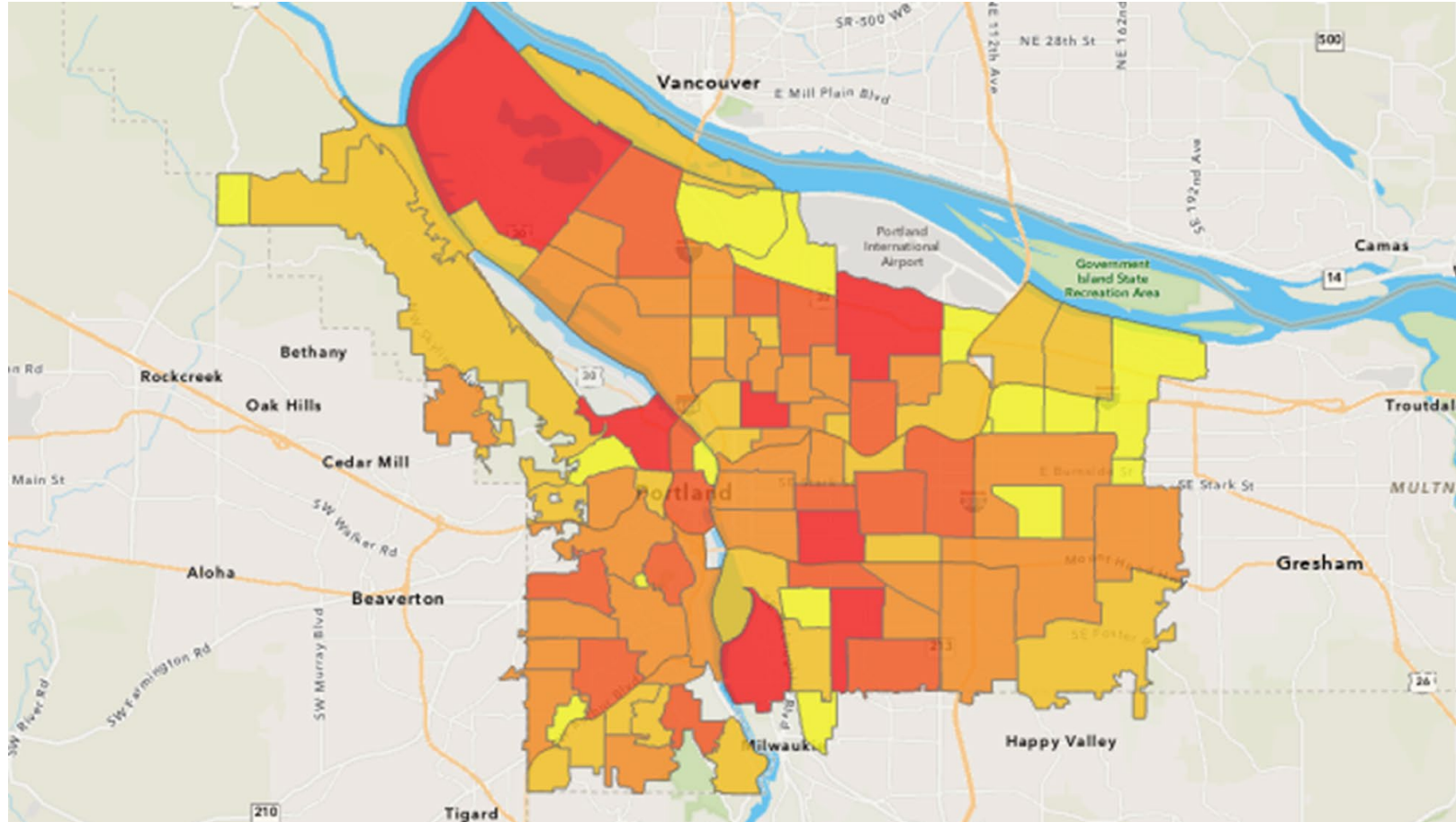
Emergency Response Islands



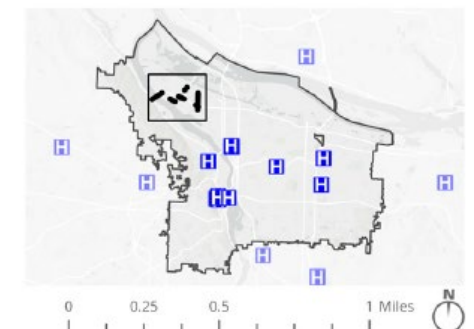
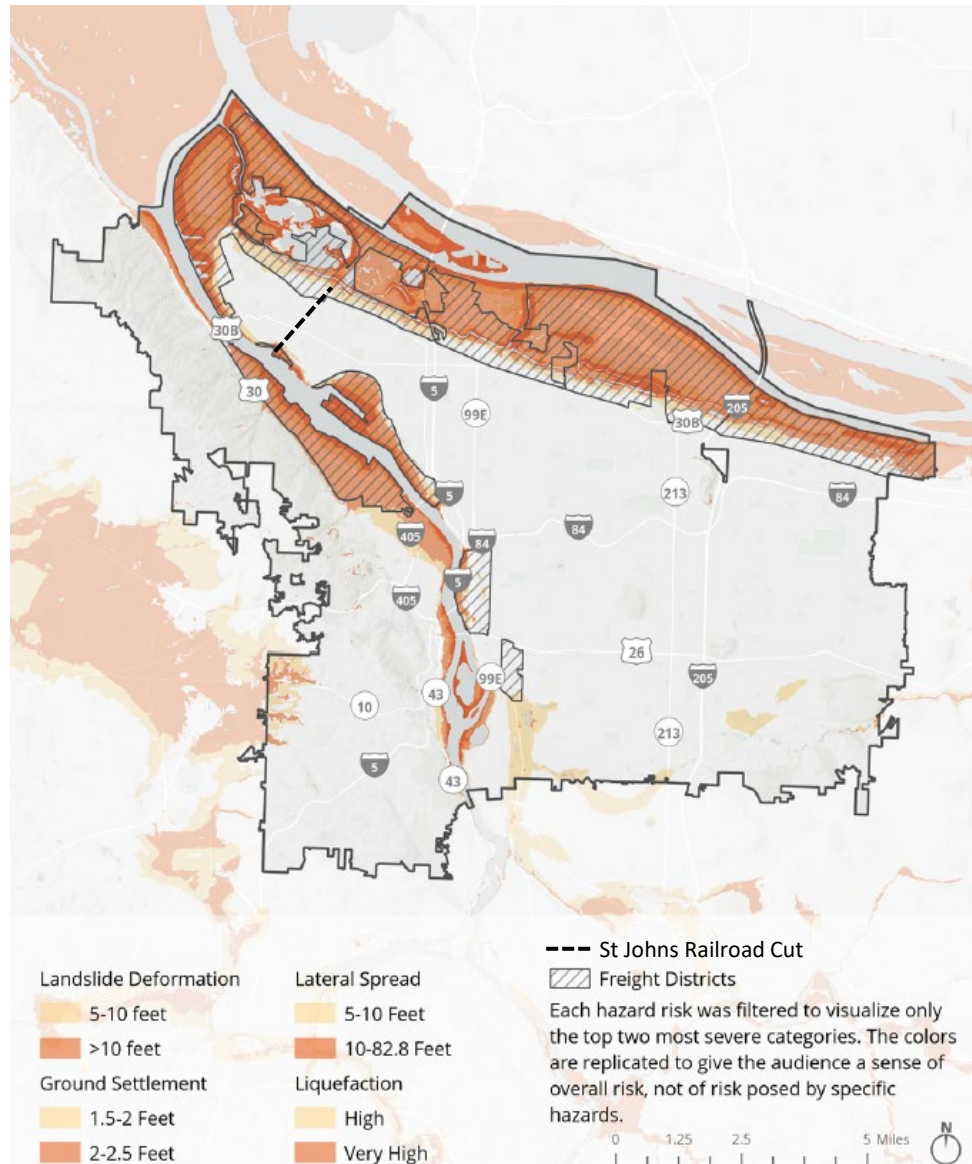
- 2022 Framework development from Regional Disaster Preparedness Organization (RDPO) and the Regional Water Providers Consortium.
- Geographic areas expected to become isolated after a Cascadia Subduction Zone (CSZ) event due to transportation system damage and natural barriers.



Portland NET Volunteers



St. Johns Islanding Example



Potential Actions





For questions and additional information, please contact:

City of Portland Office of Government Relations:

Evyn Mitchell, State Relations Manager

503-823-6726

evyn.mitchell@portlandoregon.gov

