

Behavioral Health Administrative Service Organizations

Oregon Joint Task Force on Regional Behavioral Health Accountability

August 4, 2025

Presented by:

Kelly Causey, PhD – Deputy Commissioner of Engagement, BHA

Alyssa Hetschel, LCSW, LAC – BHASO Division Director, BHA

Kayla Martin, JD – BHASO Administrative Manager, BHA


Joseph “Joey” Pachta, LCSW – BHASO Service Manager, BHA

Meg Taylor – Chief Behavioral Health Officer, Rocky Mountain
Health Plans

Dannette R. Smith,
Commissioner



COLORADO
Behavioral Health
Administration

- 
- 1. CO's BH Reform Journey**
 - 2. The BHASO Model**
 - 3. BHASOs/Medicaid**
 - 4. Financing the BHASOs Model**
 - 5. A Data-Driven Approach**
 - 6. Impacts**



COLORADO
Behavioral Health
Administration

Colorado's Behavioral Health

Task Force – 2019–2020

- Formed by Governor Polis in April 2019
- 25 task force members
- Testimony of hundreds of Coloradans – individuals, families, providers, advocates
- Released [Blueprint for Reform](#) with key recommendations summarizing a 278 page full report

BEHAVIORAL HEALTH IN COLORADO: **PUTTING PEOPLE FIRST**

A Blueprint for Reform



A Thriving Behavioral Health System

Access

Whole-
Person Care

Accountability

Workforce
Support

Affordability

Consumer
Guidance

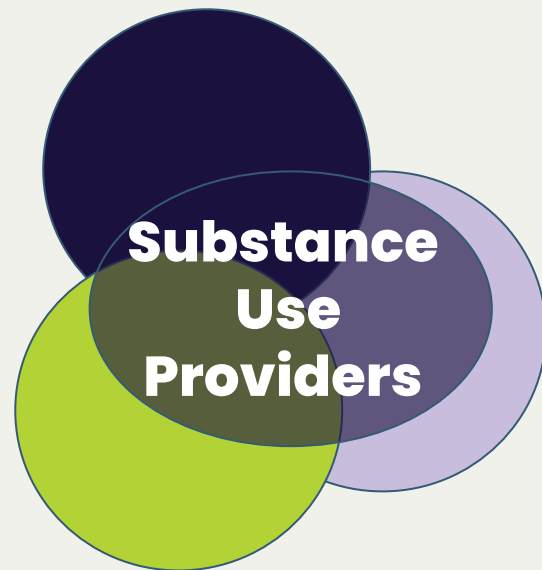
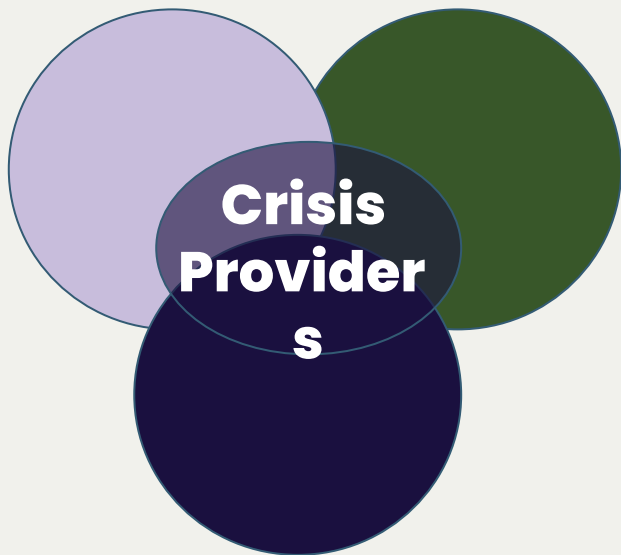
Vision: Putting People First



COLORADO
Behavioral Health
Administration

Why the BHASOs Model?

Where We Were



COLORADO
Behavioral Health
Administration

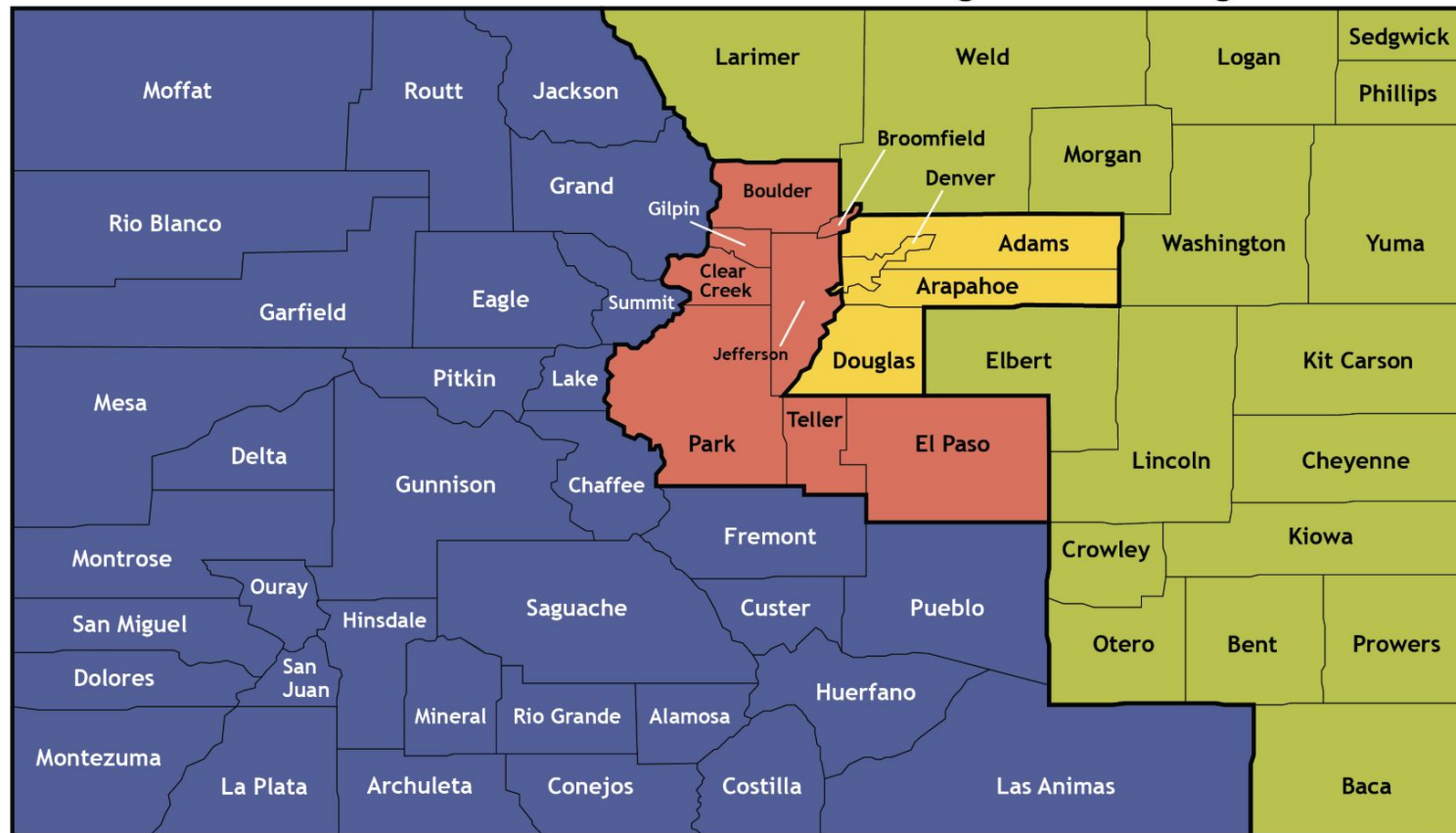
BHA's Stakeholdering Efforts

- October 2022 – 270 interviews and 76 survey responses
- August 2023 – Request for Information with 30 in-depth responses from 30 major stakeholders
- Common themes:
 - Include lived experience voices
 - Clear roles and responsibilities with RAEs
 - Social determinants of health
 - Network adequacy
 - Transparent data & Quality improvement
 - Care coordination
 - Workforce shortage
 - Administrative burden

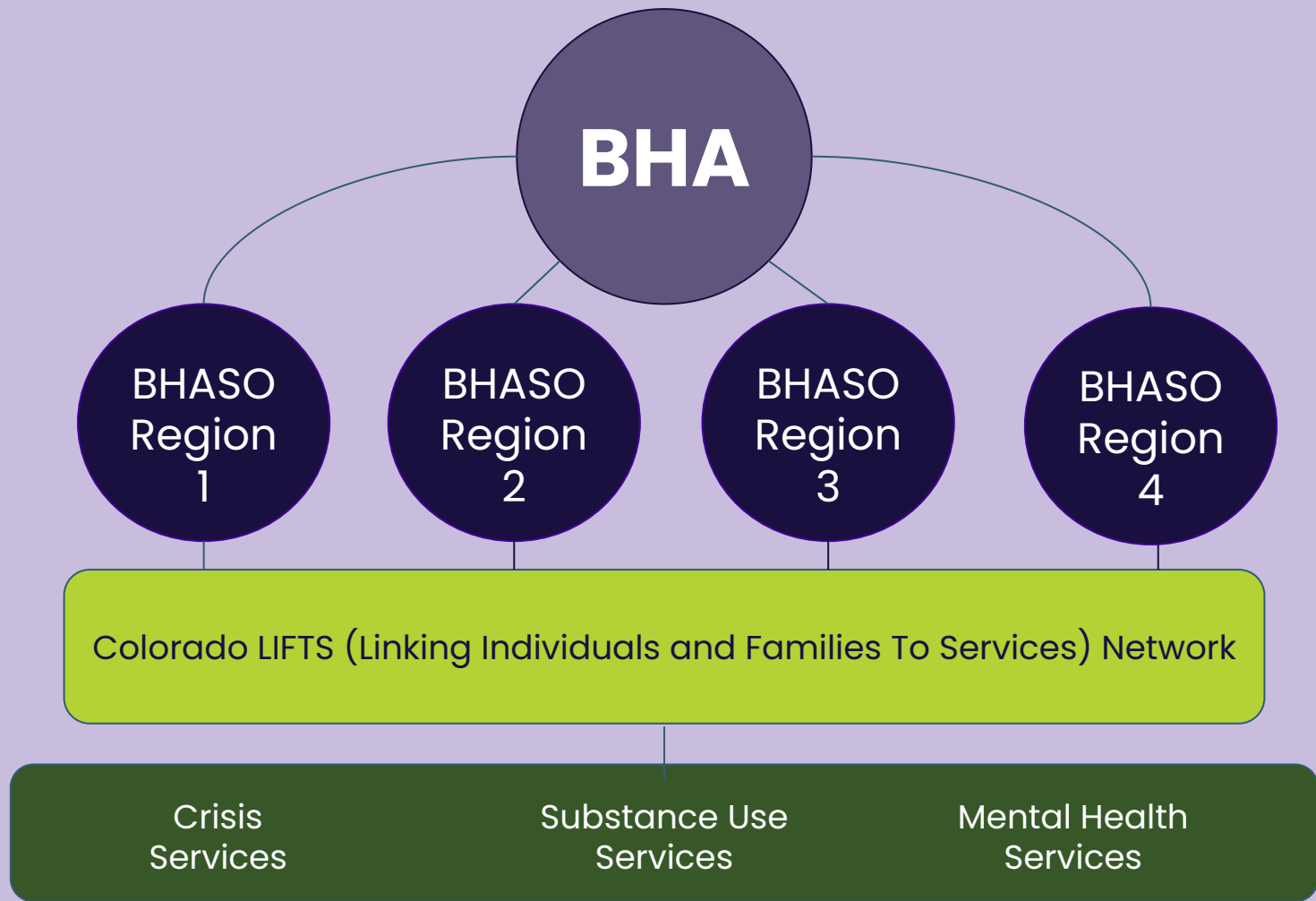


COLORADO
Behavioral Health
Administration

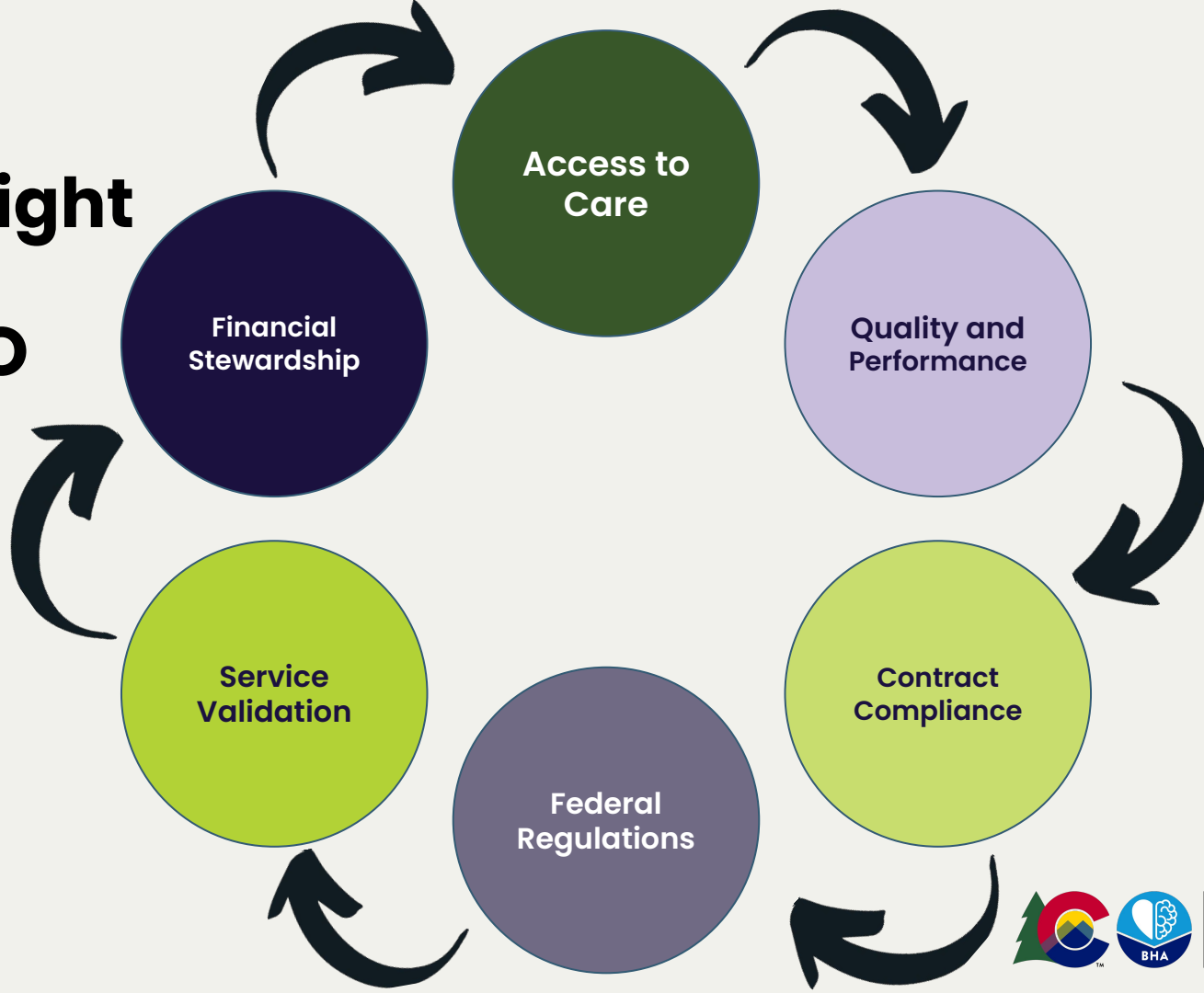
Behavioral Health Administrative Service Organizations Regions



COLORADO
Behavioral Health
Administration



BHA Oversight In The BHASO Model



COLORADO
Behavioral Health
Administration

RAEs

Administers the
capitated
behavioral
health benefit
for Medicaid

&

- Support for Medicaid help seekers
- Care coordination
- QI strategies
- Shared resources
- Aligned regions for care navigation

BHASOs

Funds Providers to
deliver behavioral
health care to
uninsured and
underinsured
people in Colorado

PLUS

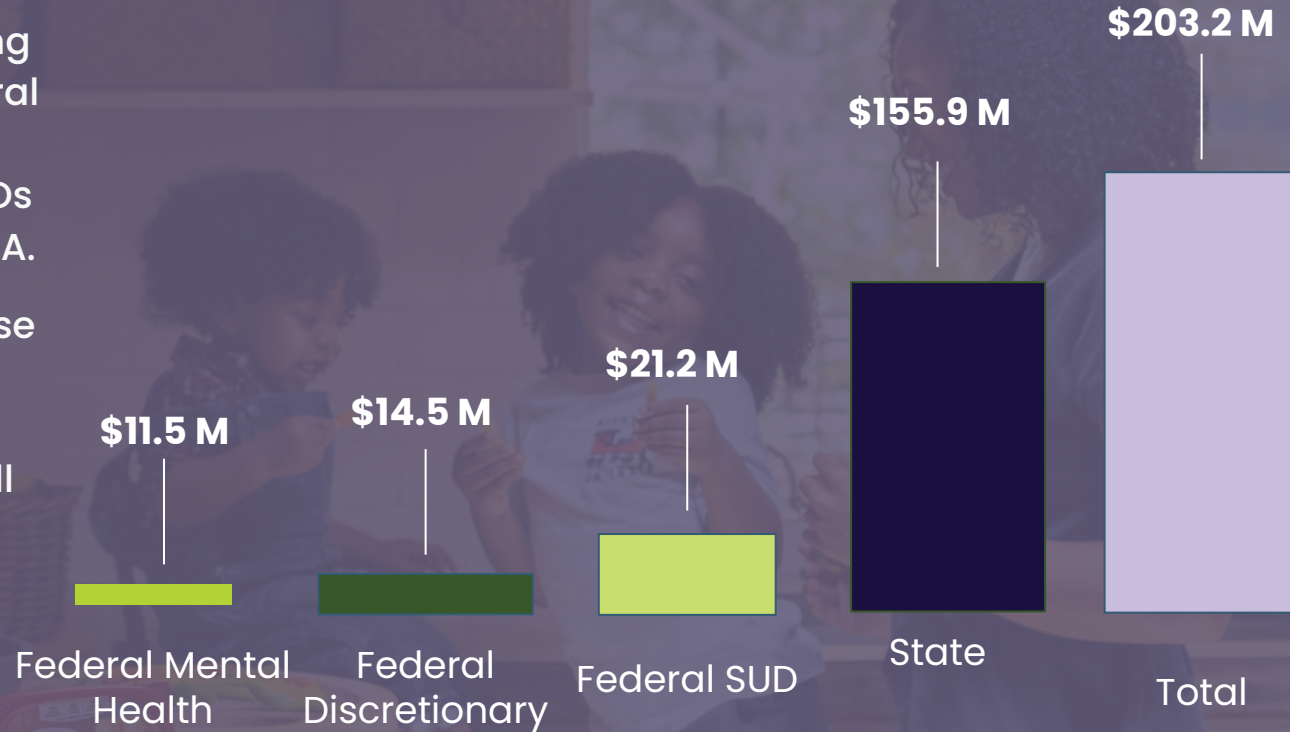
Administer
services available
to ALL people of
Colorado, like
Crisis



COLORADO
Behavioral Health
Administration

FINANCING THE BHASOs MODEL

- State and federal funding for community behavioral health services will be funneled through BHASOs to enact the vision of BHA.
- The BHASOs will use these funds to contract with a network of behavioral health providers that will provide services to individuals in their communities.



COLORADO
Behavioral Health
Administration

Why Colorado LIFTS & Care Navigation Matter

We anticipate roughly 250,000 contacts to the 988 Colorado Mental Health Line in the next six months.

1 in 4 callers are between the ages of 26 and 39.
Stress, Suicide Concerns, and General Wellness are the top reasons for outreach.

We anticipate 110,754 individuals may require mental health services in 2025.

Region 1: 20,572

Region 2: 25,001

Region 3: 24,702

Region 4: 40,479

We anticipate 43,089 individuals may require substance use disorder treatment in 2025.

Region 1: 8,670

Region 2: 6,792

Region 3: 10,341

Region 4: 17,286

Substance Use and Mental Health data reflect individuals who receive support from publicly funded providers.



COLORADO
Behavioral Health
Administration

FY26 Performance Metrics

Active Providers to
Population

Time to Therapeutic
Intervention: Crisis Events

Time to Therapeutic
Intervention:
Non-Crisis Events

Client Transition from
Withdrawal Management
into Residential or
Outpatient within 7 Days

Client Transition from
Residential into a Lower
ASAM Residential or
Outpatient within 7 Days

LIFTS Behavioral Health
Service Penetration
Among Indivs with
Behavioral Health Dx



COLORADO
Behavioral Health
Administration

How will BHASOs impact receiving services?

01

Fewer steps to access care

Fewer steps for individuals and families to get behavioral health care and faster access to care

02

Streamlined process

Move from a multi-stream model of MSOs, ASOs, and mental health service centers to one source for care.

03

Care coordination focus

Provide behavioral health safety net services and care coordination for a whole-person health journey.



COLORADO
Behavioral Health
Administration

**THANK
YOU!**

Where do I get more information?

Now

BHA.Colorado.gov/gethelp

OwnPath.co

Questions for the BHA:

Alyssa Hetschel
alyssa.hetschel@state.co.us

Questions for RMHP:

Meg Taylor

meg-taylor@uhc.com



COLORADO
Behavioral Health
Administration

