



Willamette Career Academy Restore Funding



In 2023 Governor Kotek line item vetoed \$1,000,000 in SB 5506 due to a technical error. We are asking that the 2024 legislature restore WCA funding at a level of \$1,425,000 to ensure vital regional CTE for the 2024-2025 school year.

Who We Are

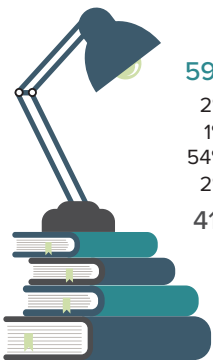
The Willamette Career Academy (WCA) is harnessing the power of connection and collaboration and has become a successful regional hub for career/technical innovation. The program continues to grow and currently serves students and business partners in Marion, Polk, and Yamhill counties.

Entering its third year, the WCA is now offering six different educational programs to help address the demand for highly skilled workers in our region, as our invested industry partners requested. The educational programs are **Cosmetology, Health Services, PAPÉ Diesel Technology, Construction Technology, IT/Computer Science, and Freres Manufacturing**. WCA's seventh program, **Dental Assisting**, will be available in the Fall 2024.

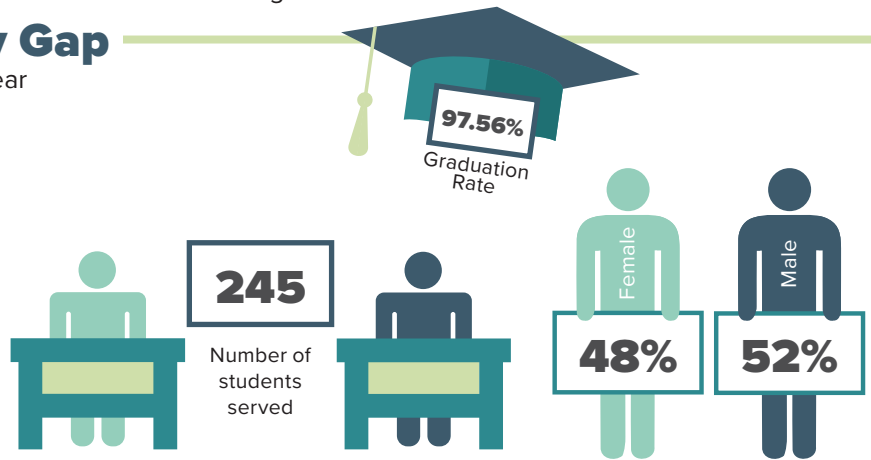
The Willamette Education Service District, (WESD), representing the region's 21 school districts, has been operating the WCA and has plans for continuous improvement of the school's long-term success.

Closing the Opportunity Gap

WCA Student Data for the 2023-24 School Year



59%	BIPOC Total
2%	Alaskan/Native American
1%	Native Hawaiian/Pacific Islander
54%	Hispanic
2%	Multi-Racial
41%	White Total



First Large Scale In-State Model of Regional Education

While other states have implemented regional career and technical center model, this project represents the first of its kind in Oregon. WESD is proud to demonstrate the value and viability of providing more opportunities and hands-on learning that students crave and industry demands.

“Feeling that they were truly doing something positive for their futures!”

~ WCA Students, when asked what they valued most from their experiences

Project Costs

We'd like to ask the Oregon Legislature to commit \$1,425,000 dollars to the Willamette Career Academy for 2024-2025. This funding will provide operating costs, work-based learning, internships, apprenticeship opportunities, and access to high-quality educators to teach our students.

Request: \$1,425,000 for 2024-2025

Regional Impact

District superintendents and school boards have fully committed to the WCA and have supported it during its first year of welcoming students. This state-of-the-art school prepares students for in-demand jobs in seven popular programs and can also provide access to further education and training in those career pathways. This ongoing influx of highly skilled workers into our region will make our local counties more attractive to business and industry investments. The WCA plans to support over 450 students when operating at full capacity.

Industry partners have lined up with financial and programming support, demonstrating the urgent and intense need for skilled labor. Programs like the WCA showcase Oregon Legislators' commitment to career and technical education and providing the next-generation workforce that is desperately needed.

Student Stories



Isela Chavez Martinez
WCA Cosmetology Student

Isela plans on becoming a lash technician and eventually owning her own business. She was excited to attend WCA because she knew she would be able to pursue her future goals a lot sooner.



Martin Zamora
WCA Construction Technology Student

Martin was selected as one of three Oregon Employability Skills student of the month in September. He is working toward various certifications at WCA.

Ongoing Needs

Discovered during 2024-2025



Participating School Districts

All of our 21 regional partners have access to the WCA.

Marion County School Districts

Cascade School District
Gervais Schools
Jefferson School District
Mt. Angel School District
North Marion School District
North Santiam School District
Silver Falls School District
St. Paul School District
Woodburn School District

Polk County School Districts

Falls City School District

Yamhill County School Districts

Newberg School District

Partners



Learn more at www.willamettecareeracademy.com