

Senate Human Services Committee

Individual Residential Care Services Program

Aprille Flint-Gerner, Director, Child Welfare Division

February 28, 2024

Dr Beyer recommendation # 3

DRAFT (11/30/23)

14. Recommendation 3: Therapeutic homes with child-specific in-home support, including therapeutic kin homes, throughout the state

Therapeutic homes, which can be Treatment Foster Care or other approaches, differ from CW resource homes and kin caregivers and are more costly because they have:

- Staff providing in-home services for child/youth and support for parent
- A child therapist for the child and guiding the caregiver
- Staff ensuring the child/youth's school success
- Support for Family Time with the child's parent for reunification or kin to ensure the child has a smooth transition to a permanent home
- DD services integrated in the home and school
- A trained respite caregiver on the team

DRAFT PREPARED FOR JUDGE McSHANE

Report of the Special Master
CASA for Children, et al. v. State of Oregon et al.
United States District Court for the District of Oregon
Case No. 3:16-cv-018195-YY
November 30, 2023

and LGBTQIA+ children/youth
over to become their permanent home when that best
s

therapeutic kin homes be prioritized. Nearly half of
placed with kin, and in the long run, kin placements
g. But placement adjustment in kin homes has many

Individual Residential Care (IRC) compared to Temporary Lodging

Temporary Lodging is...

An emergency stop-gap until appropriate placement can be found.

A place where Child Welfare staff are the primary caregivers for a single young person – often in a hotel,

There are strict limits on the use of Temporary Lodging including number of children and young adults, number of Temporary Lodging occasions, and number of nights per occasion.

IRC is...

An appropriate placement option, supported by licensed Child Caring Agencies (CCAs).

Not congregate care settings as only one child will be served at a time.

Where all employees **must meet requirements** in (309-022 & 309-019 OHA rule sets)

May be a Qualified Residential Treatment Program or Psychiatric Residential Treatment Facility setting but **it is not a requirement.**

Scope of considerations for proposals

Support children and young adults with extraordinary needs

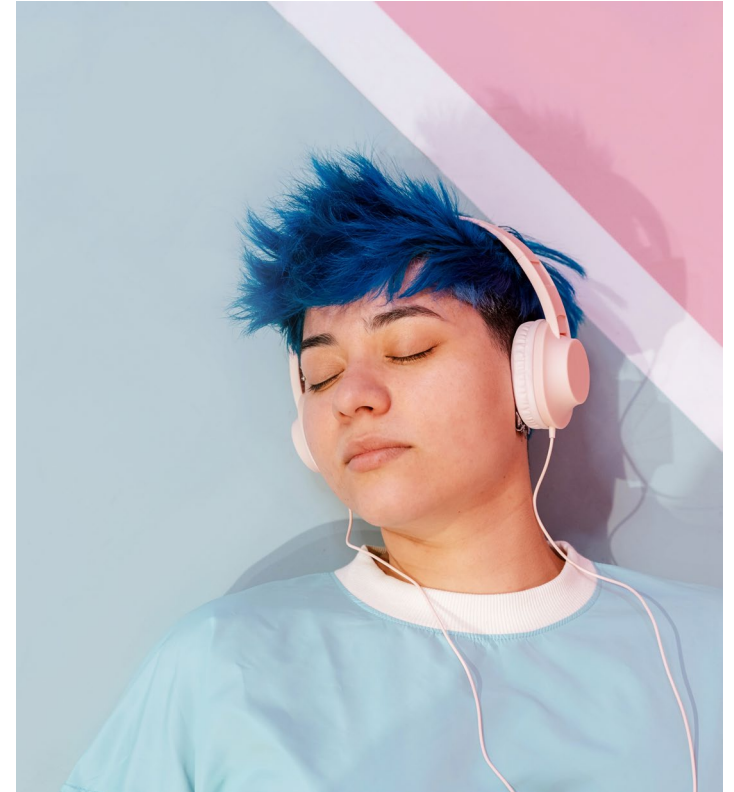
- Licensed as a Child Caring Agency
- One child or young adult served at a time
- Enhanced staffing ratio (up to 3:1)
- In a home-like setting
- Expertise in or co-located behavioral health treatment supports
- Proposal language describing entry into program and exit conditions



Scope of considerations for proposals (cont.)

Supervision & skilled interventions supporting the following potential needs:

- Psychiatric needs or instability (provision of psychiatric treatment is not required)
- Intellectual & Developmental Disabilities
- Aggressive behavior
- Medical needs (such as diabetes)





Questions?
