



Forest Service
U.S. DEPARTMENT OF AGRICULTURE

THE WILDFIRE CRISIS IN OREGON

CONFRONTING THE WILDFIRE CRISIS

A Strategy for Protecting
Communities and
Improving Resilience in
America's Forests



WILDFIRE CRISIS

s t r a t e g y

COHESIVE WILDLAND FIRE STRATEGY



April 2014

INVESTMENTS IN OREGON

Program	FY22 to FY24 (Millions)
BIL/IRA National Forests	\$88.2
Collaborative Forest Landscape Restoration Program (CFLRP)	\$37.4
Base Fuels Program	\$31.4
Joint Chiefs	\$26.5
Community Wildfire Defense Grants	\$23.5
Disaster Supplemental Fuels	\$7
Tribal Forest Protection Act (TFPA)	\$3.4
Good Neighbor Agreement (GNA)	\$3.3
National Fire Capacity Grants	\$2.1
BIL Grants to State of OR	\$1.2
TOTAL	\$224

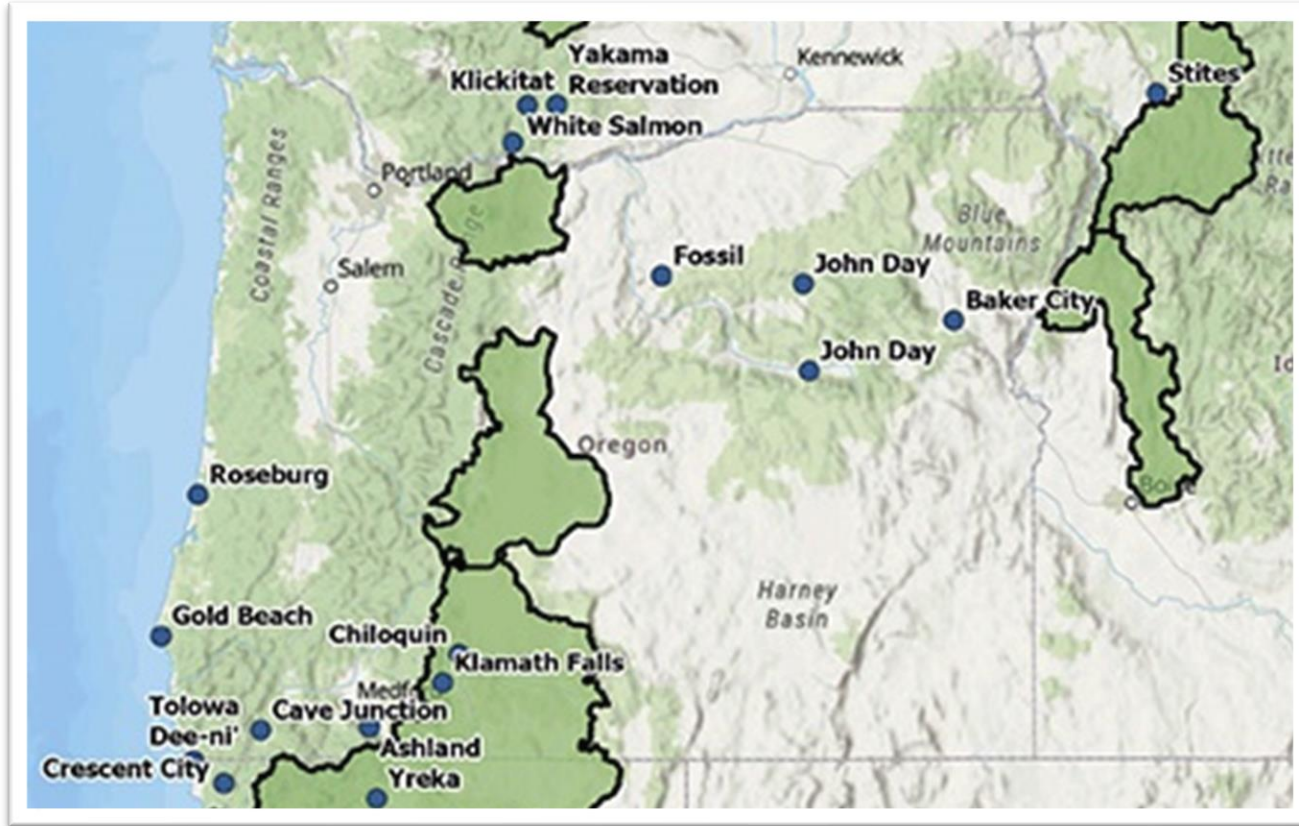
INVESTMENTS IN OREGON

Program	FY22 to FY24 (Millions)
BIL/IRA National Forests	\$88.2
Collaborative Forest Landscape Restoration Program (CFLRP)	\$37.4
Base Fuels Program	\$31.4
Joint Chiefs	\$26.5
Community Wildfire Defense Grants	\$23.5
Disaster Supplemental Fuels	\$7
Tribal Forest Protection Act (TFPA)	\$3.4
Good Neighbor Agreement (GNA)	\$3.3
National Fire Capacity Grants	\$2.1
BIL Grants to State of OR	\$1.2
Post-Fire Recovery	\$298
TOTAL	\$522

INVESTMENTS IN OREGON

Program	FY22 to FY24 (Millions)
BIL/IRA National Forests	\$88.2
Collaborative Forest Landscape Restoration Program (CFLRP)	\$37.4
Base Fuels Program	\$31.4
Joint Chiefs	\$26.5
Community Wildfire Defense Grants	\$23.5
Disaster Supplemental Fuels	\$7
Tribal Forest Protection Act (TFPA)	\$3.4
Good Neighbor Agreement (GNA)	\$3.3
National Fire Capacity Grants	\$2.1
BIL Grants to State of OR	\$1.2
Post-Fire Recovery	\$298
TOTAL	\$522

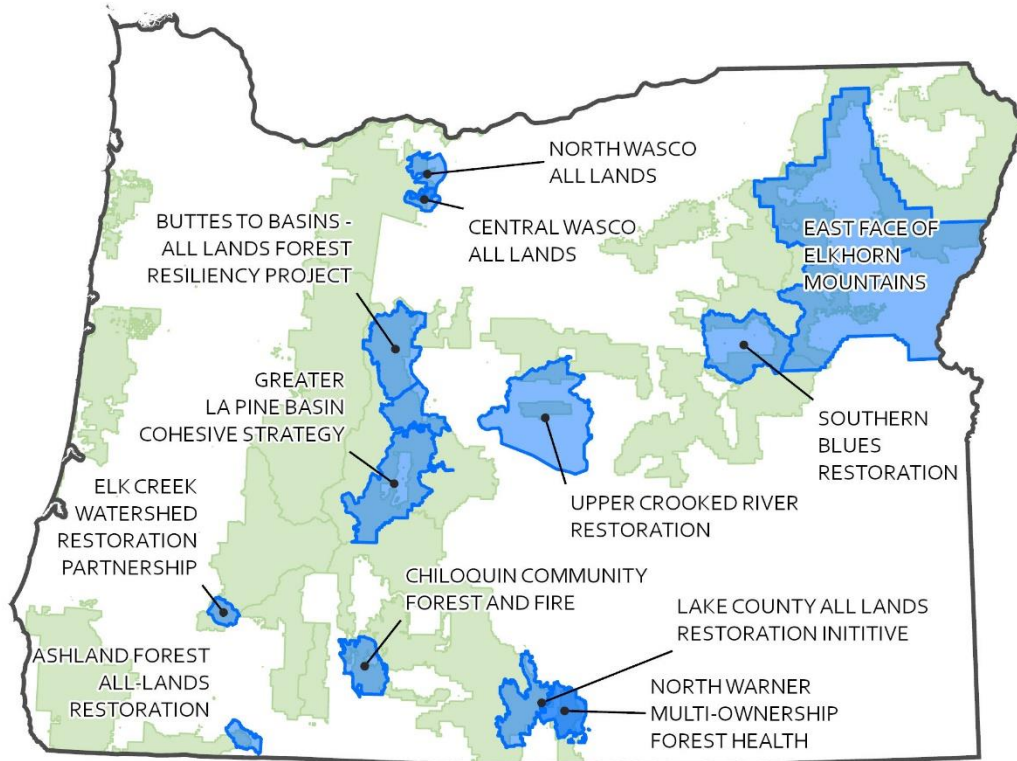
COMMUNITY WILDFIRE DEFENSE GRANTS



ROUND 1: **\$23.5 M**

<https://www.fs.usda.gov/managing-land/fire/grants/funded-proposals>

JOINT CHIEFS LANDSCAPE RESTORATION PARTNERSHIP



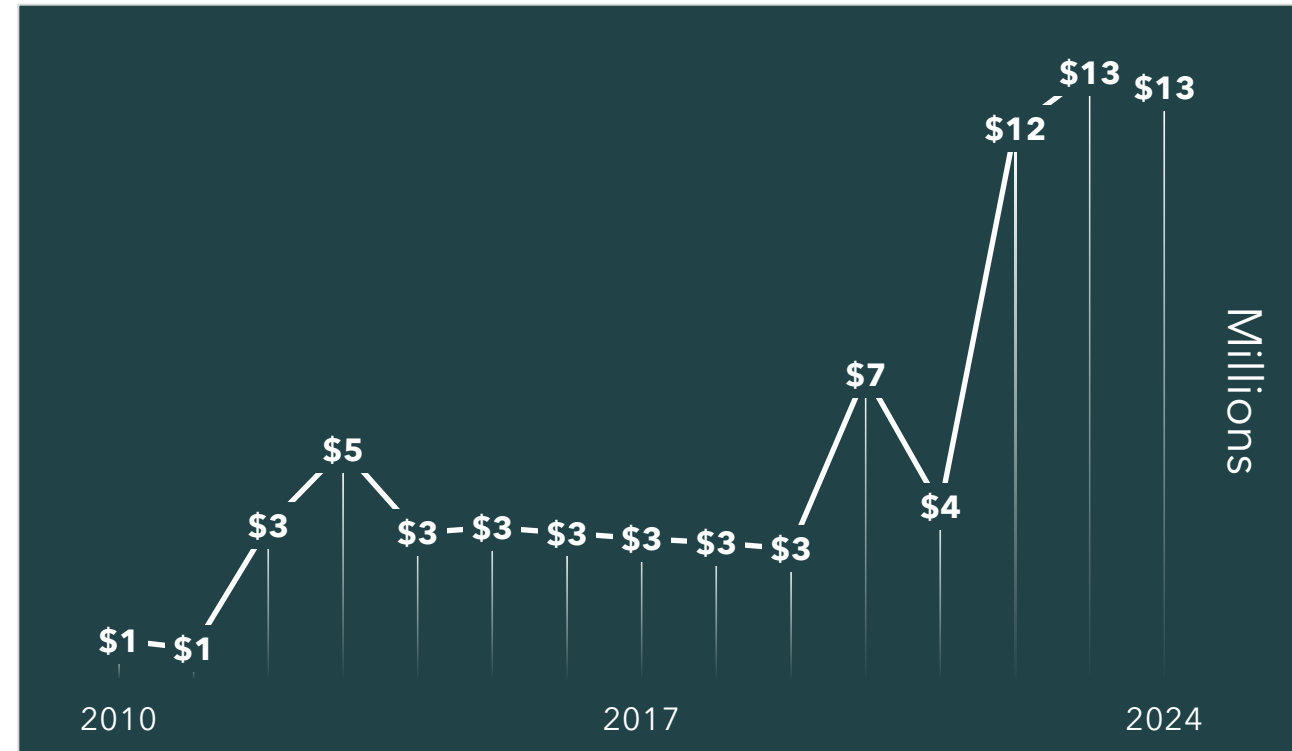
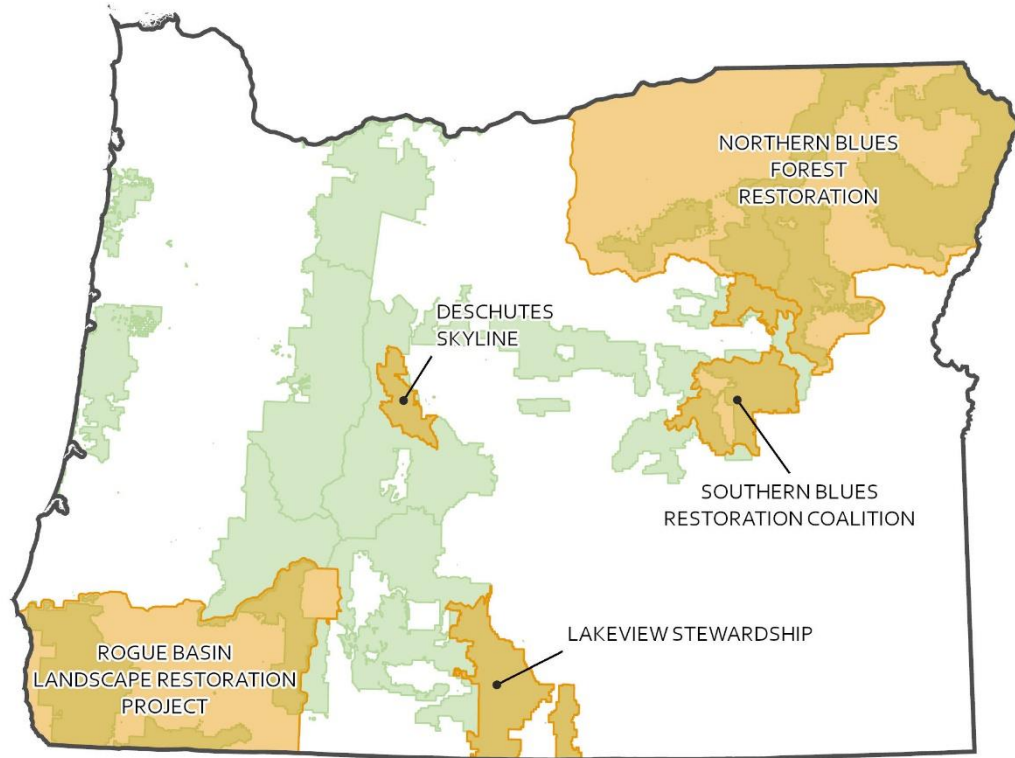
■ Joint Chiefs' LRP
■ National Forest



FY 22-24: **\$26.5 M**

FY 14-24: **\$65.7 M**

COLLABORATIVE FOREST LANDSCAPE RESTORATION PROGRAM

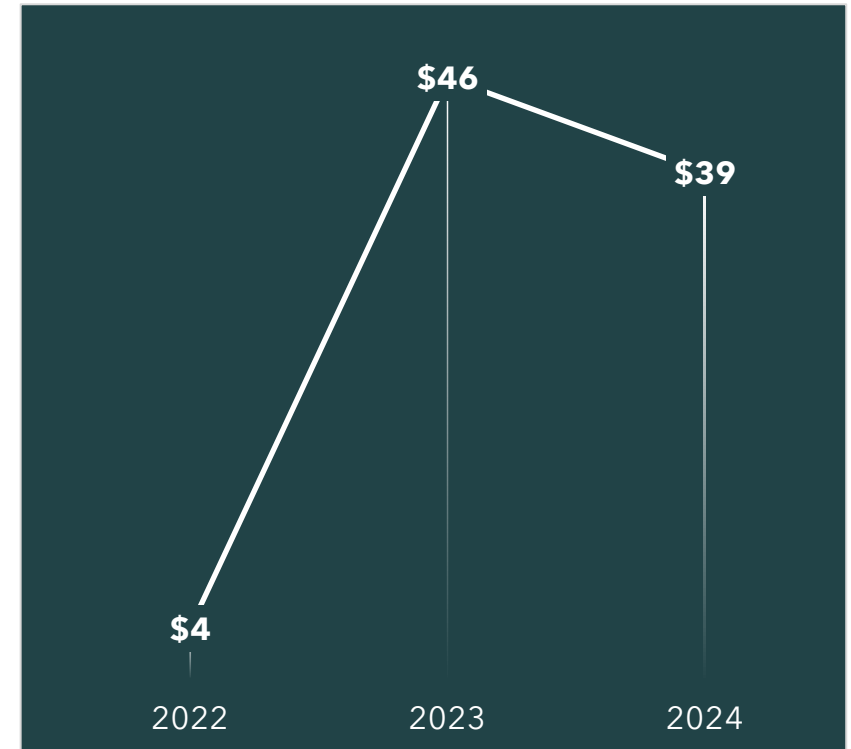


FY 22-24: **\$37.4 M**

FY 10-24: **\$75.2 M**

WILDFIRE CRISIS INVESTMENTS

BIPARTISAN INFRASTRUCTURE LAW
INFLATION REDUCTION ACT



FY 22-24: **\$88.2 M**

WILDFIRE CRISIS INVESTMENTS

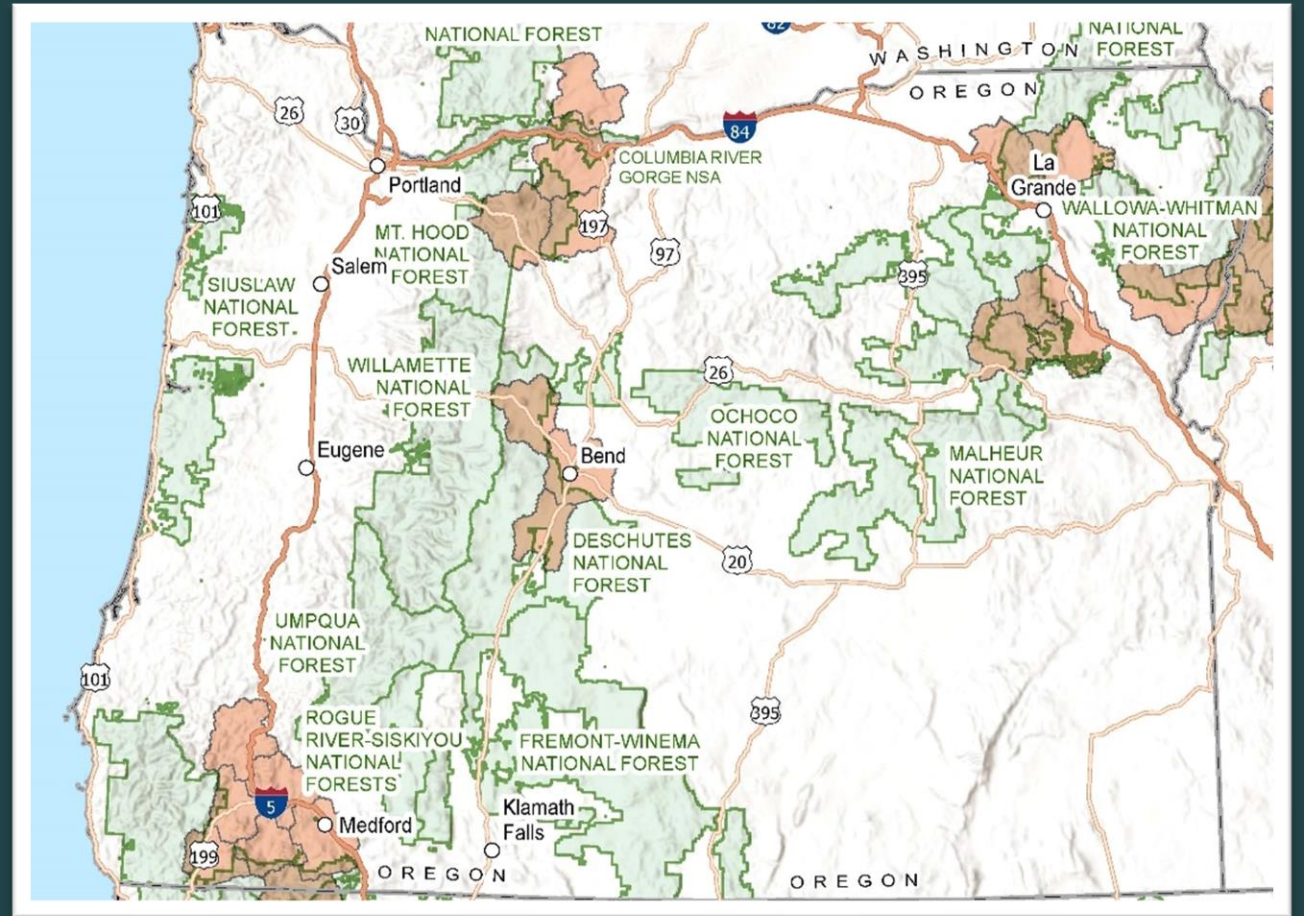


PRIORITIZE WILDFIRE RISK REDUCTION PROJECTS...

- (1) in the **wildland-urban interface** (WUI)
- (2) public **drinking water** source areas
- (3) areas **strategically important** for reducing risk
- (4) that retain **large trees** in fire-resilient stands
- (5) that maintain or restore **old growth** stands
- (6) Restricted to **National Forest System**

HIGH RISK FIRESHEDS

The source of highest
community exposure to
wildfire risk

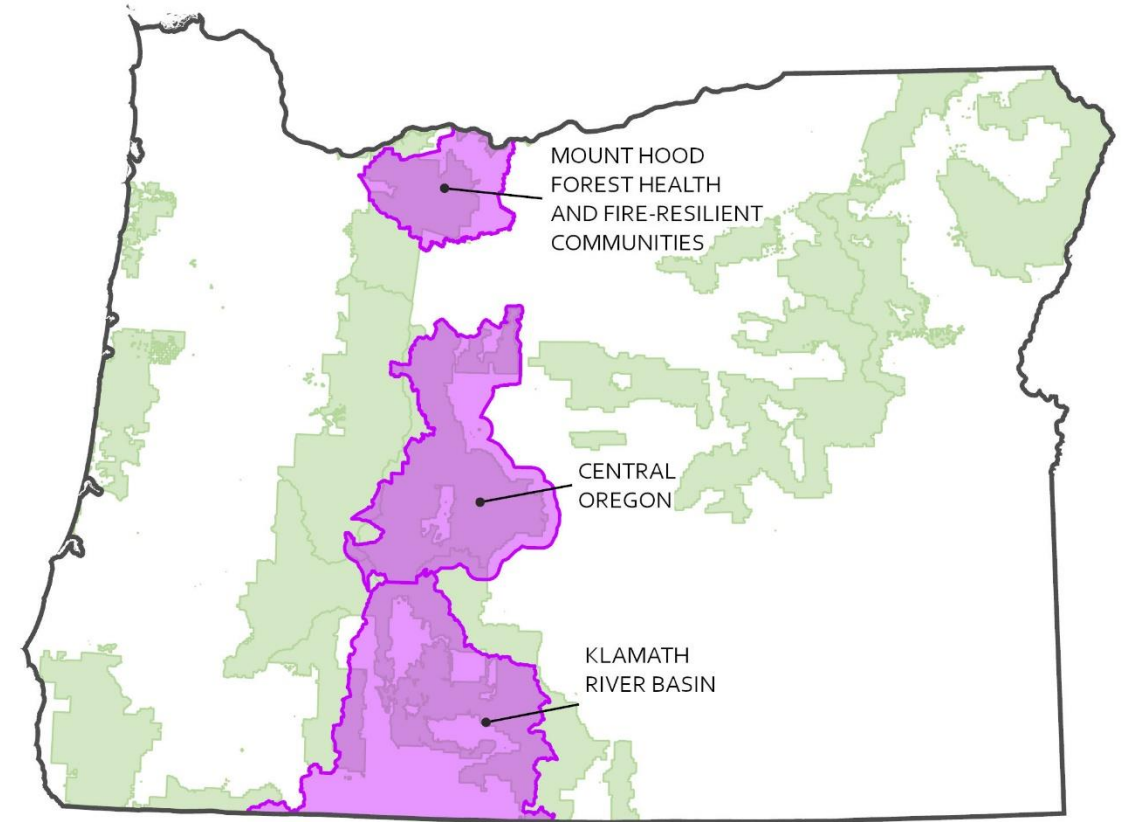


Fireshed Registry:

<https://usfs.maps.arcgis.com/home/item.html?id=3e38347fd53444c994fe4407e9206cd9>

WILDFIRE CRISIS LANDSCAPES

Fiscal Year	Funding	Acres Accomplished
2022	\$7.5	30 K
2023	\$32.5 M	164 K
2024	\$38.7 M	
Total	\$78.7 M	194 K



WILDFIRE CRISIS

Landscape Investments

MOUNT HOOD FOREST HEALTH AND FIRE-RESILIENT COMMUNITIES

FOREST SERVICE REGION

Pacific Northwest

NATIONAL FOREST

Mt. Hood National Forest

STATE

Oregon

LANDSCAPE SIZE

1,081,355 acres

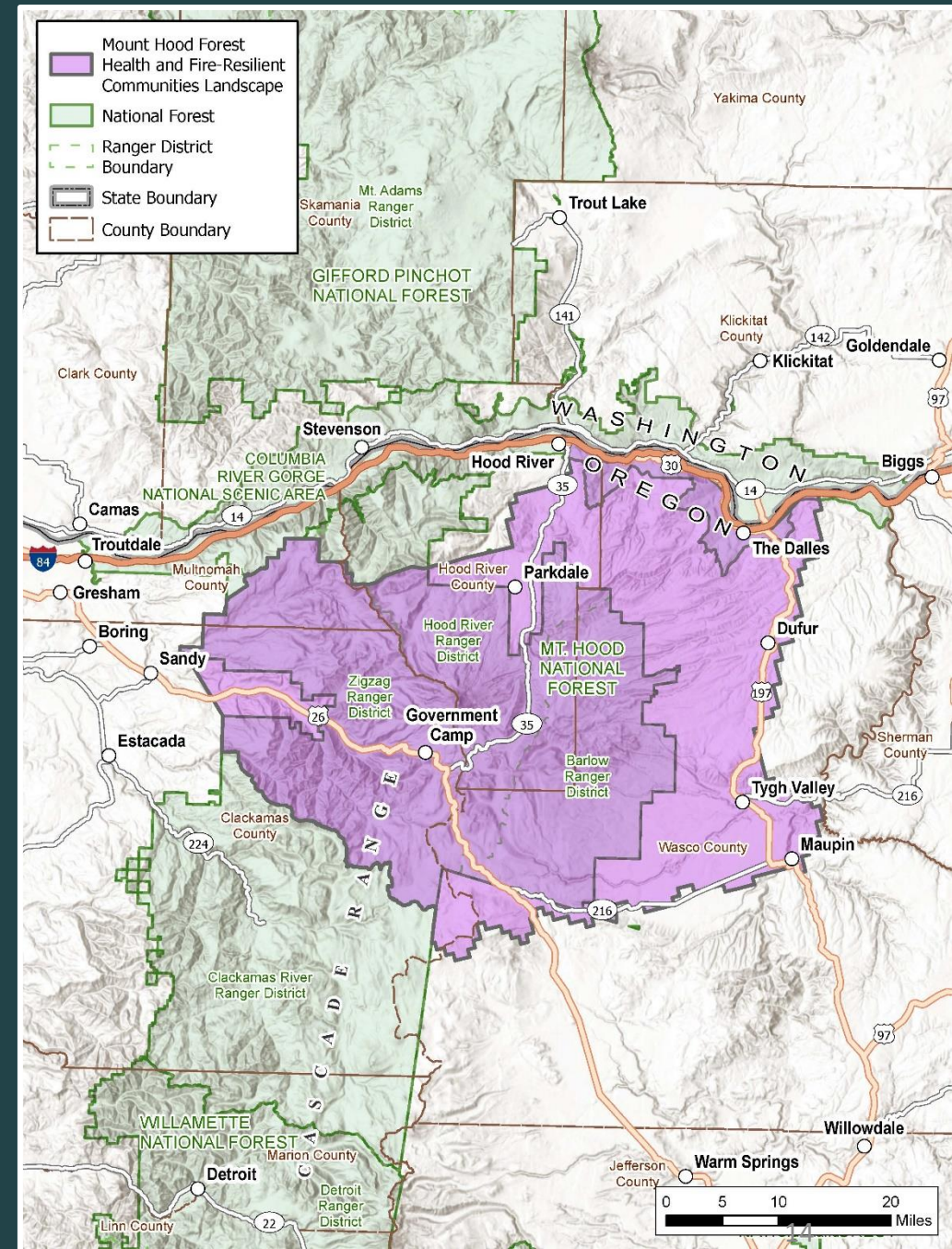
FUNDING RECEIVED

FY23: \$4 M

FY24: \$5 M

Acres Accomplished

FY23: 13,700



WILDFIRE CRISIS

Landscape Investments

CENTRAL OREGON

FOREST SERVICE REGION

Pacific Northwest

NATIONAL FOREST

Deschutes National Forest and the Crooked River National Grassland

STATE

Oregon

LANDSCAPE SIZE

2,600,000 acres

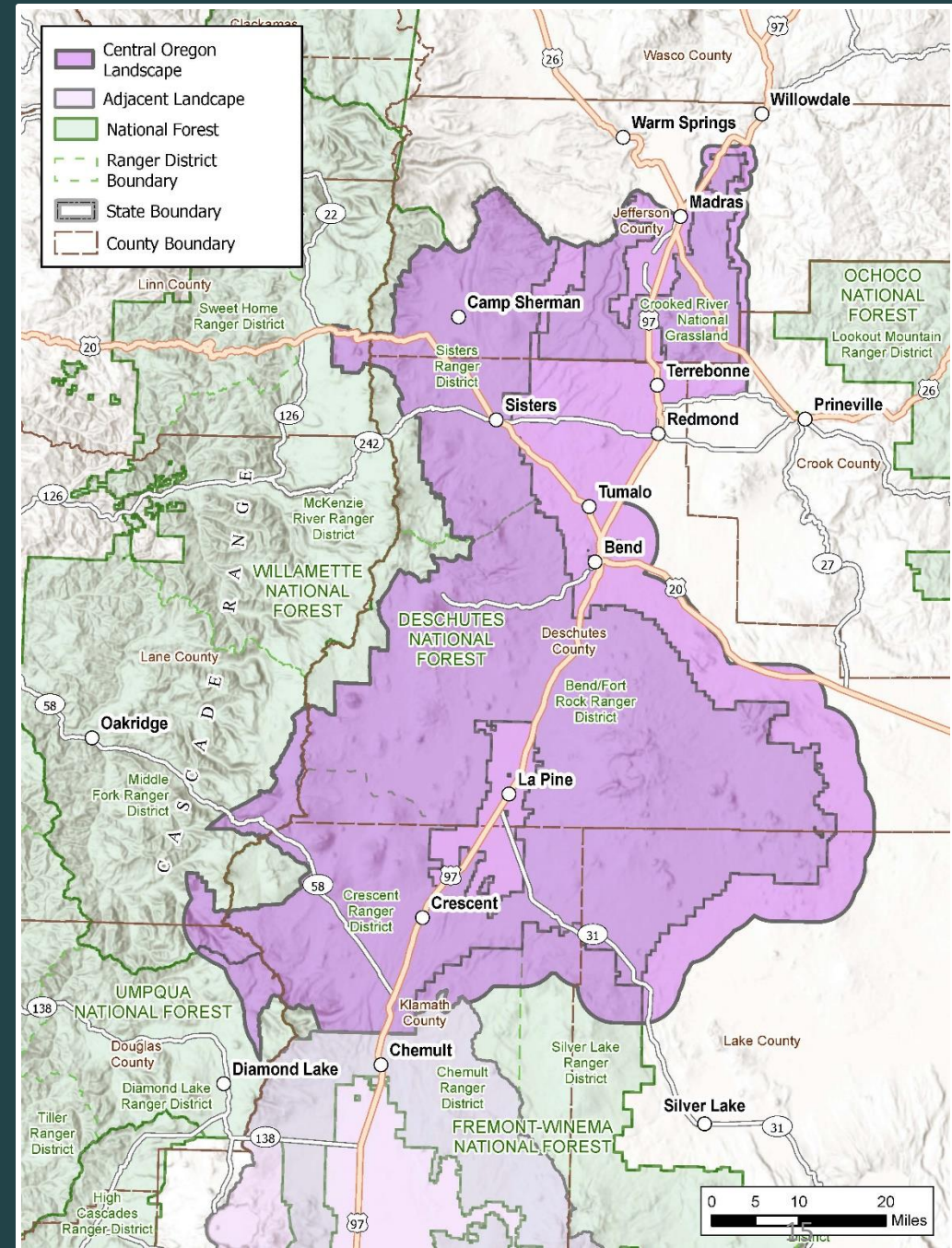
FUNDING RECEIVED

FY22-23: \$20.5 M

FY24: \$18.2M

ACRES ACCOMPLISHED

FY22-23: 78,600



WILDFIRE CRISIS

Landscape Investments

KLAMATH RIVER BASIN

FOREST SERVICE REGIONS

Pacific Southwest and Pacific Northwest

NATIONAL FORESTS

Modoc, Klamath, Six Rivers, Shasta-Trinity, and Fremont-Winema National Forests

STATES

California and Oregon

LANDSCAPE SIZE

10 million acres

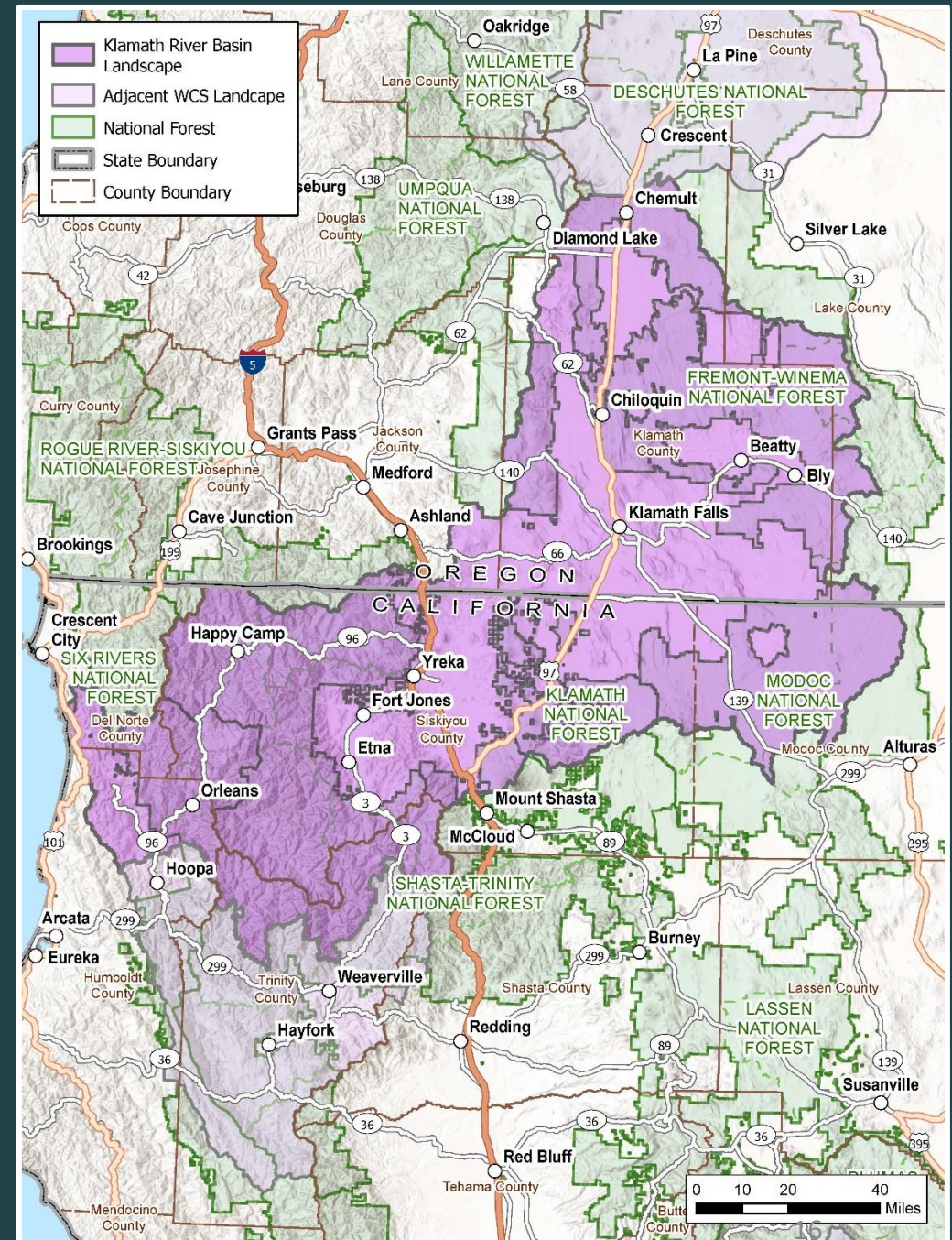
FUNDING RECEIVED (OR)

FY23: \$15.5 M

FY24: \$15.5 M

FY23 Acres Accomplished

FY23: 101,700 acres





HOW WE ARE DOING IT

FUELS TREATMENT MULTI-YEAR PROCESS



**Environmental
Analysis &
Consultation**



**Thin stand density
through timber
harvest**



**Collect smaller
biomass through
mechanical
treatment & piling**



**Remove piles
through burning**



**Prescribed Fire
(initial)**



**Prescribed Fire
(maintenance)**

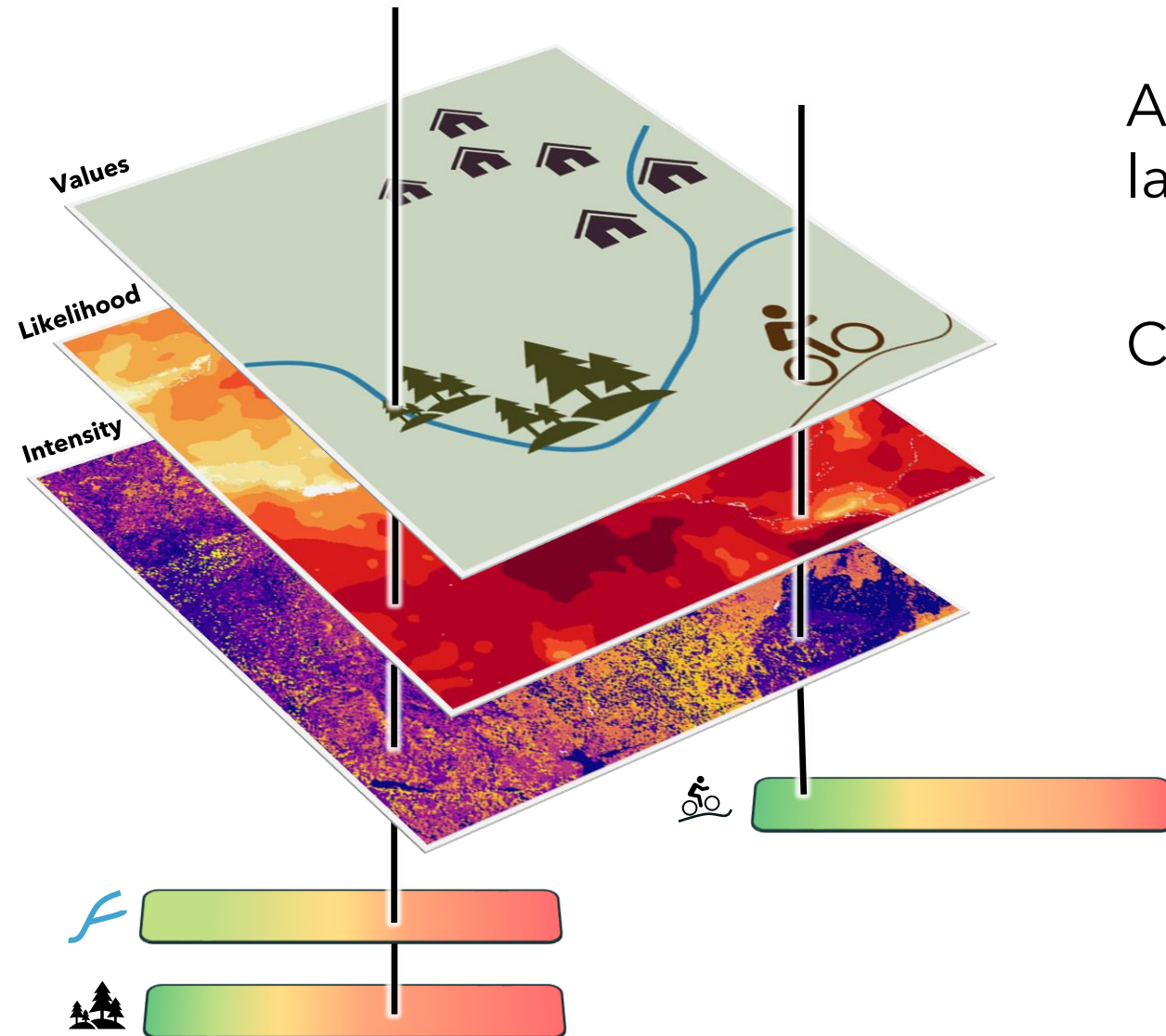


STRATEGIC PLANNING

Treating the right acres,
at the right pace, at the right
scale.



QUANTITATIVE WILDFIRE RISK ASSESSMENT



Assesses overall fire risk across a landscape

Combines:

- Different values across the landscape
- Fire likelihood
- Fire intensity
- How each value is impacted by fire of different intensities

SCIENCE INTEGRATION

Partnering with the
science community to
learn and adapt.



SHASTA FERRANTO

Regional Wildfire Crisis Coordinator

Assistant Director, Fire, Fuels & Aviation

Pacific Northwest Region

