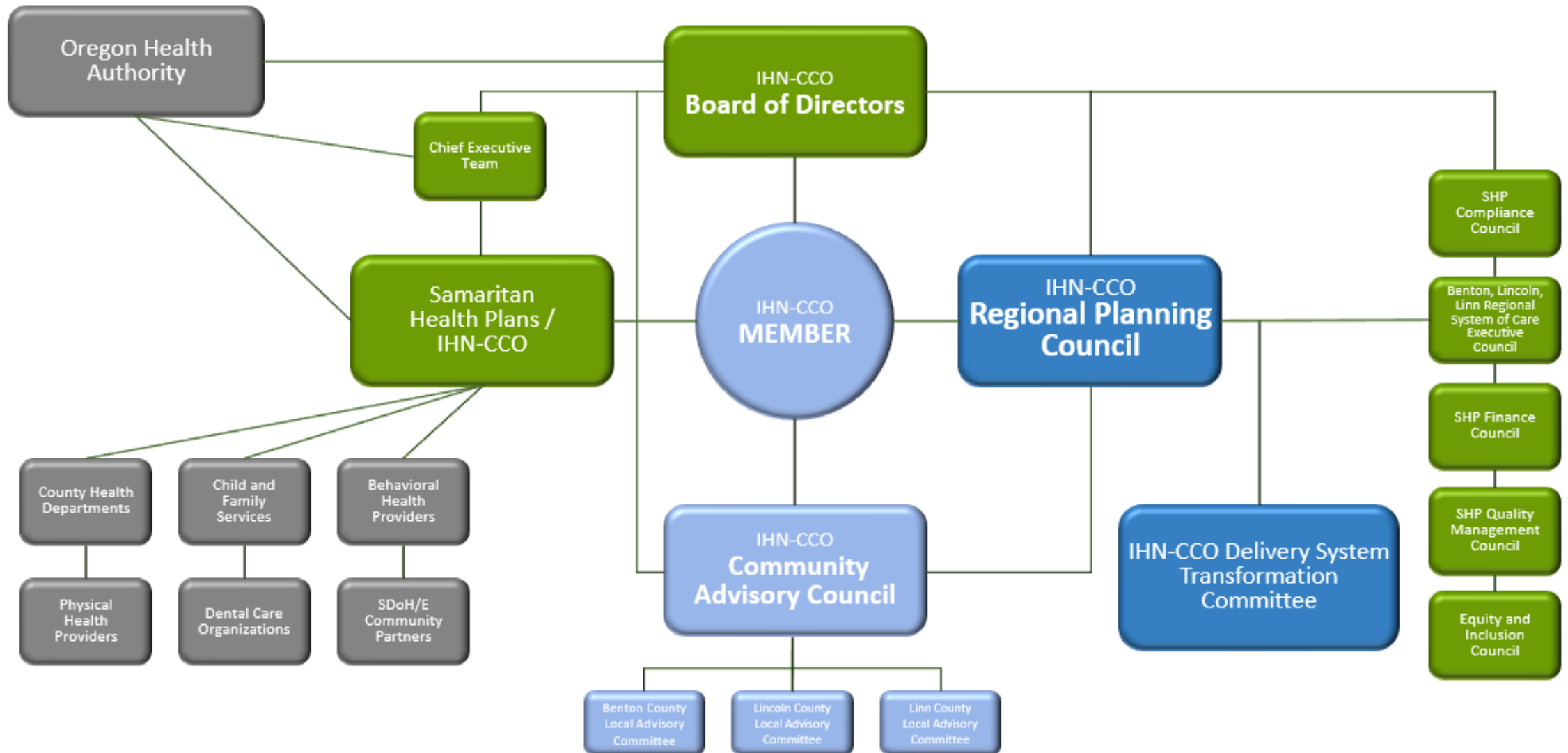




# InterCommunity Health Network CCO

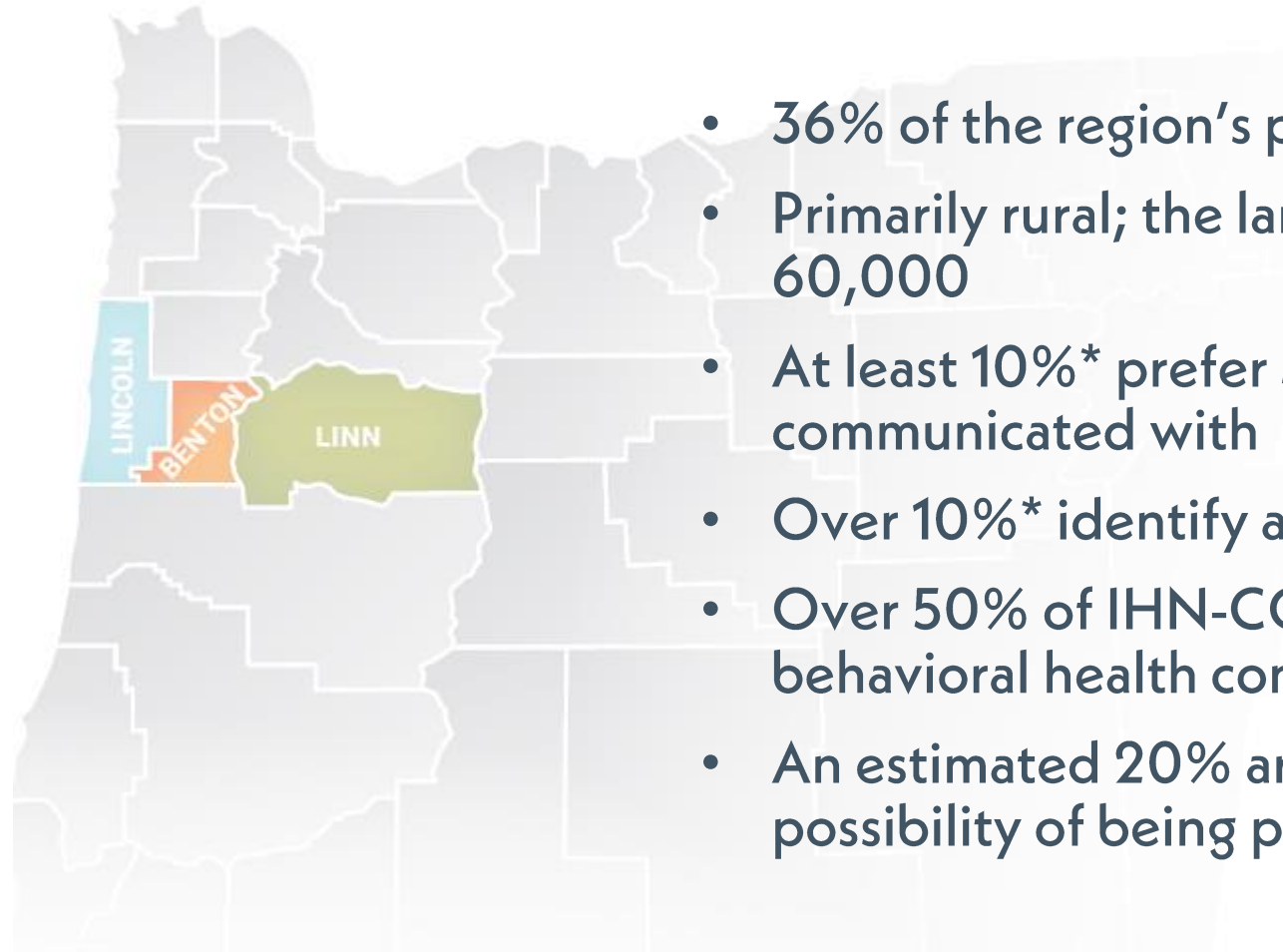
**Bill Bouska, MPA**  
**Director of Government Relations**  
**May 22, 2023**

# IHN-CCO Committee & Council Structure or the "Member in the Middle Chart"



# InterCommunity Health Network CCO

## Membership At a Glance



- 36% of the region's population are IHN-CCO members
- Primarily rural; the largest city has a population of 60,000
- At least 10%\* prefer Spanish as the language they are communicated with
- Over 10%\* identify as non-white
- Over 50% of IHN-CCO members receive care for behavioral health concerns
- An estimated 20% are IHN-CCO members with the possibility of being pregnant

# Developing the Hub Model

## Building a culture for Traditional Health Workers

Since 2012, IHN-CCO has invested \$6 million in development of THW programs and initiatives in community-based organizations through:



Arcoiris Cultural  
Benton County Health  
Department  
Capitol Dental Care  
Casa Latinos Unidos  
CHW Training Hub

Community Doula Program  
C.H.A.N.C.E  
Creating Housing Coalition  
Early Learning Hub  
Family Tree Relief Nursery  
Linn County Health Services

Lincoln County Health and  
Human Services  
Primary Care Clinics  
ReConnections Counseling  
Regional School Districts  
Samaritan Health Services

# Investments in Health Equity



## IHN-CCO INVESTMENT

- Funded as a pilot program through the Delivery System Transformation Committee in 2018
- Total investment in doula workforce development: **\$415,943.54**
- Recruited and trained 126 doulas, **40% people of color**
- Provides care in **10 languages**

## EARLY OUTCOMES

- Nearly universal linguistic and cultural reflection
- Reduced primary cesarean rates
- Increased breast/chest feeding initiation
- Eliminated expected racial health disparities (pre-term birth, low birthweight)

# Supporting Health Equity Going Forward

Focus on growth and sustainability of Traditional Health Worker programs

- Increase the number of **billable home visits** for doulas; expand doula scope
- Reduce or **resist barriers** that conflict with fidelity to the THW model
- Develop statewide implementation models for THW integration including **clear and sustainable pathways** for CCO funding
- **System integration** within OHA including THWs on commissions, Rules Advisory Committees (RACs), and other policy spaces
- Support the implementation of Unite Us/Connect Oregon to **develop social needs referral pathways and payment mechanisms**