



# Legislative Counsel

Workload Statistics

2017-2023

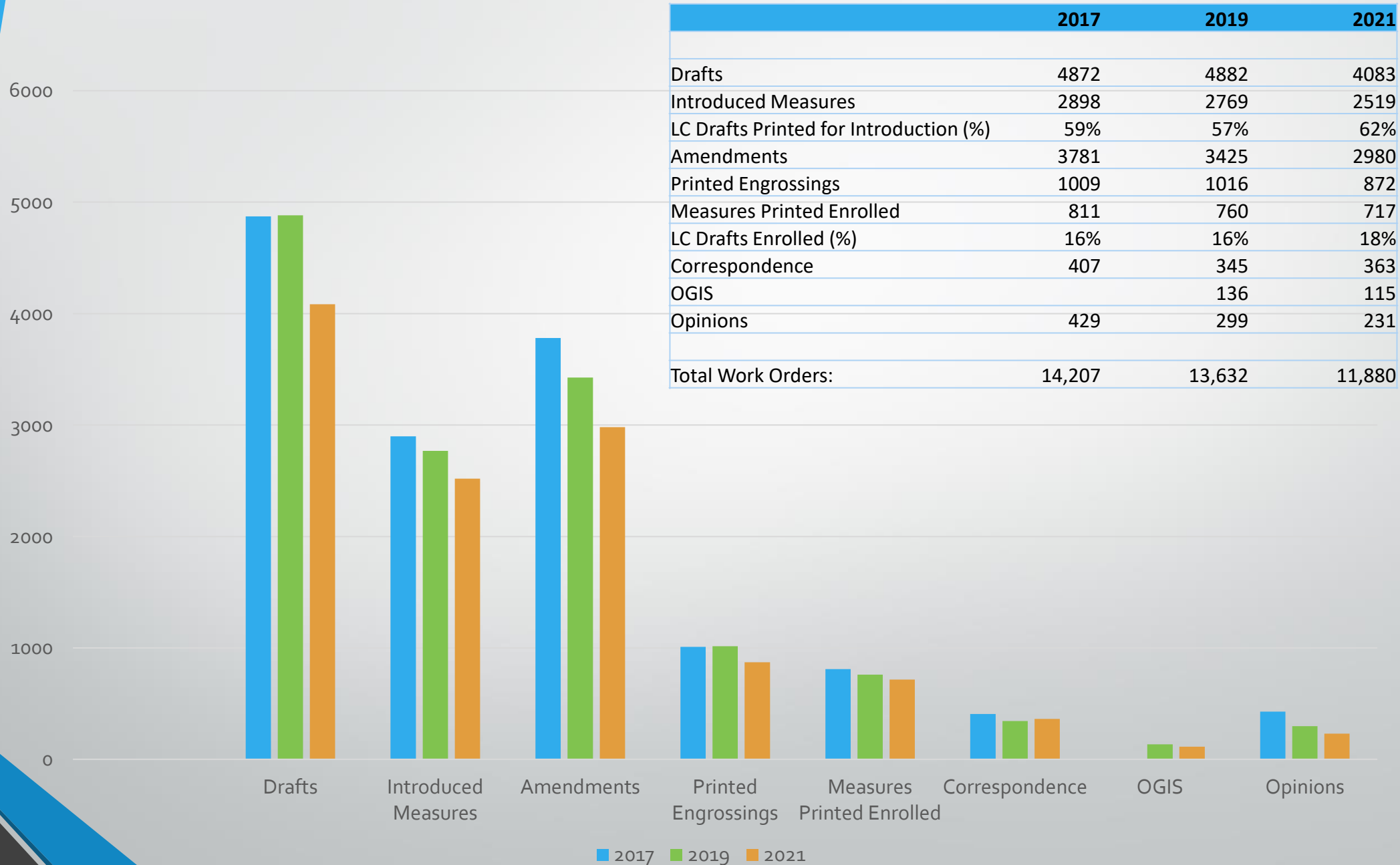
# Topics of Presentation

- Workload statistics for Long Sessions
  - LCs/bills/amendments
  - Workload statistics per member (anonymized)
- Workload statistics for Short Sessions
- Snapshot of what this session looks like
- Estimated Costs per bill



# Workload Statistics for Long Sessions

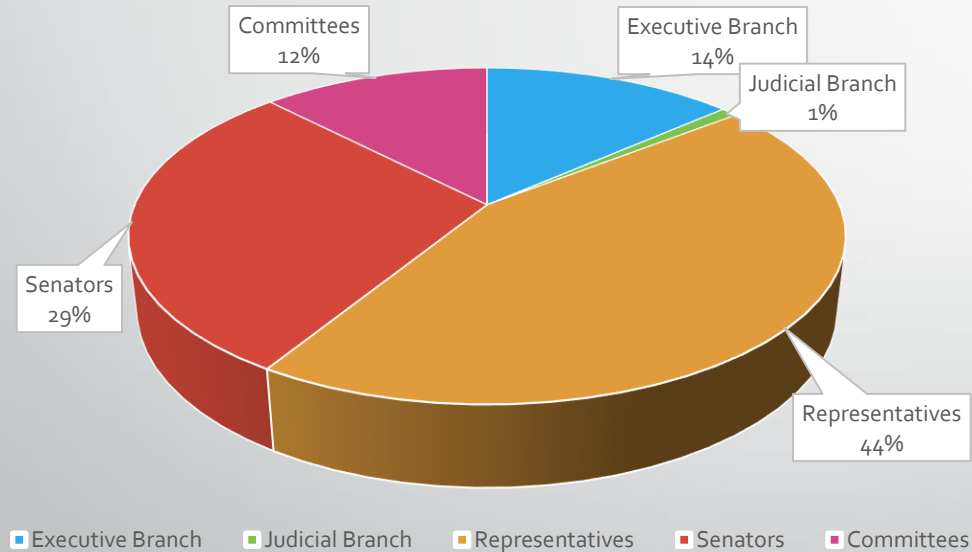
# Legislative Counsel Work Orders



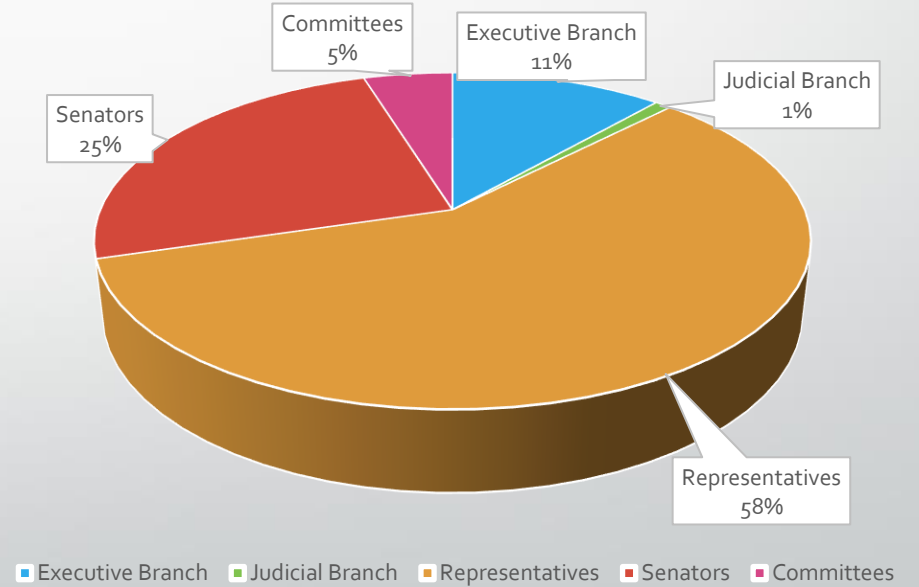
# 2017 Introduced Measures

	Introduced	Unintroduced	Total
Executive Branch	392	141	533
Judicial Branch	26	11	37
Representatives	1286	715	2001
Senators	838	306	1144
Committees	356	59	415
	2898	1232	4130

### 2017 Introduced Measures



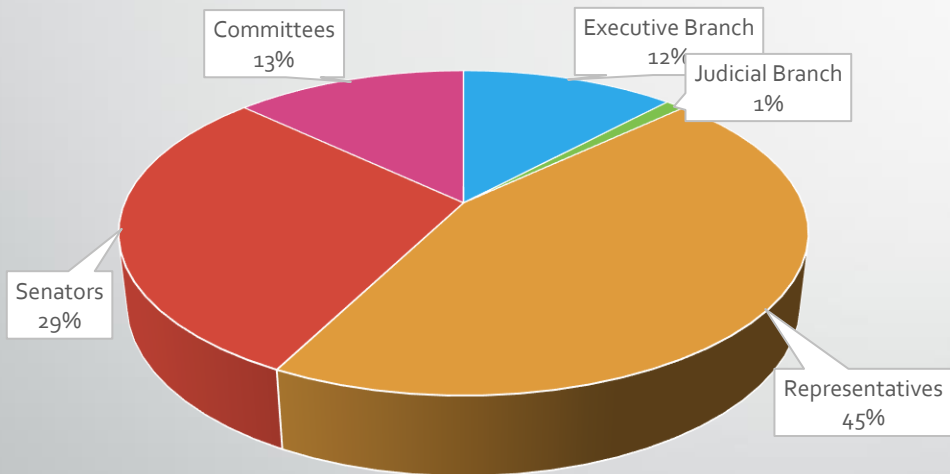
### 2017 Unintroduced Measures



# 2019 Introduced Measures

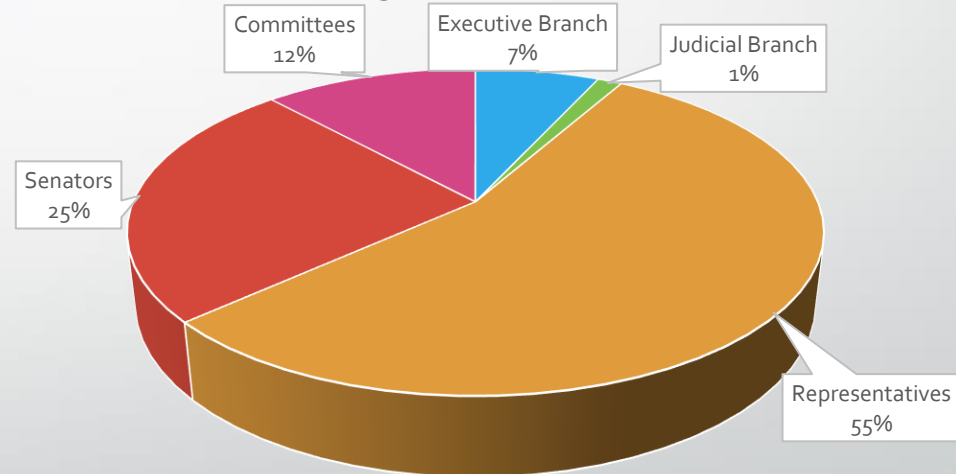
	Introduced	Unintroduced	Total
Executive Branch	331	97	448
Judicial Branch	30	19	36
Representatives	1234	777	2011
Senators	814	350	1164
Committees	360	167	527
	2769	1410	4179

2019 Introduced Measures



■ Executive Branch
 ■ Judicial Branch
 ■ Representatives
 ■ Senators
 ■ Committees

2019 Unintroduced Measures

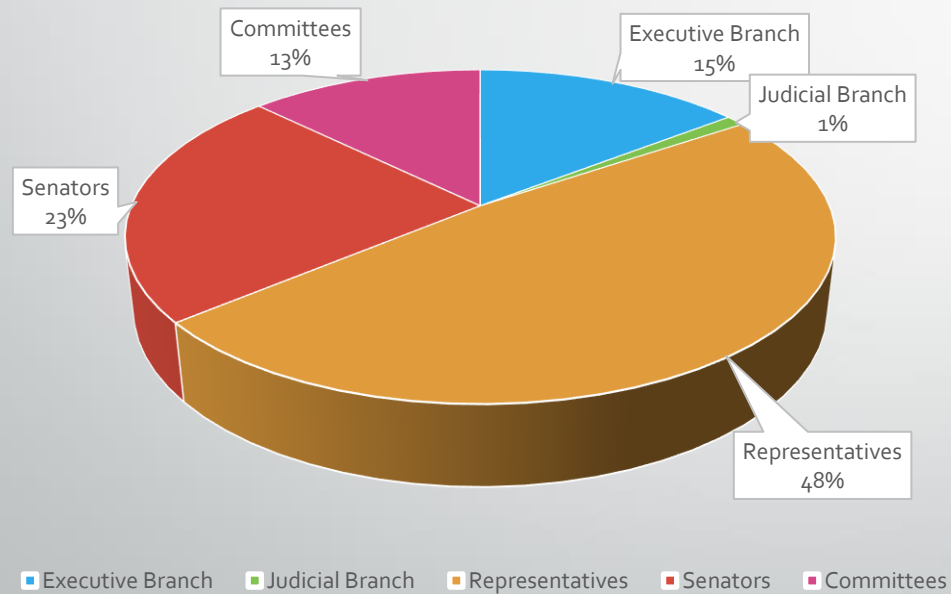


■ Executive Branch
 ■ Judicial Branch
 ■ Representatives
 ■ Senators
 ■ Committees

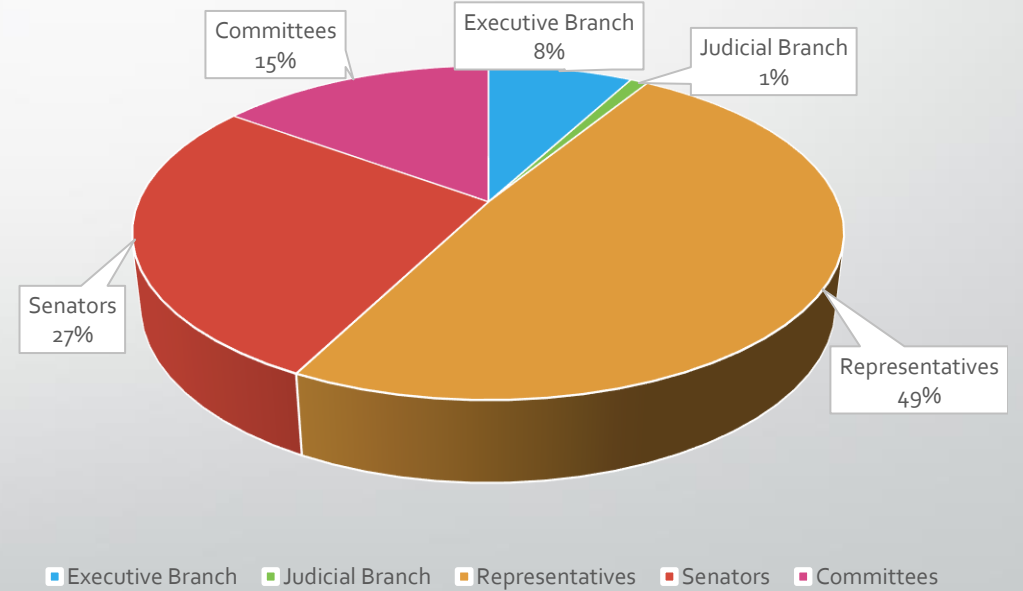
# 2021 Introduced Measures

	Introduced	Unintroduced	Total
Executive Branch	366	83	449
Judicial Branch	26	10	36
Representatives	1219	515	1734
Senators	588	290	878
Committees	320	158	478
	2519	1056	3575

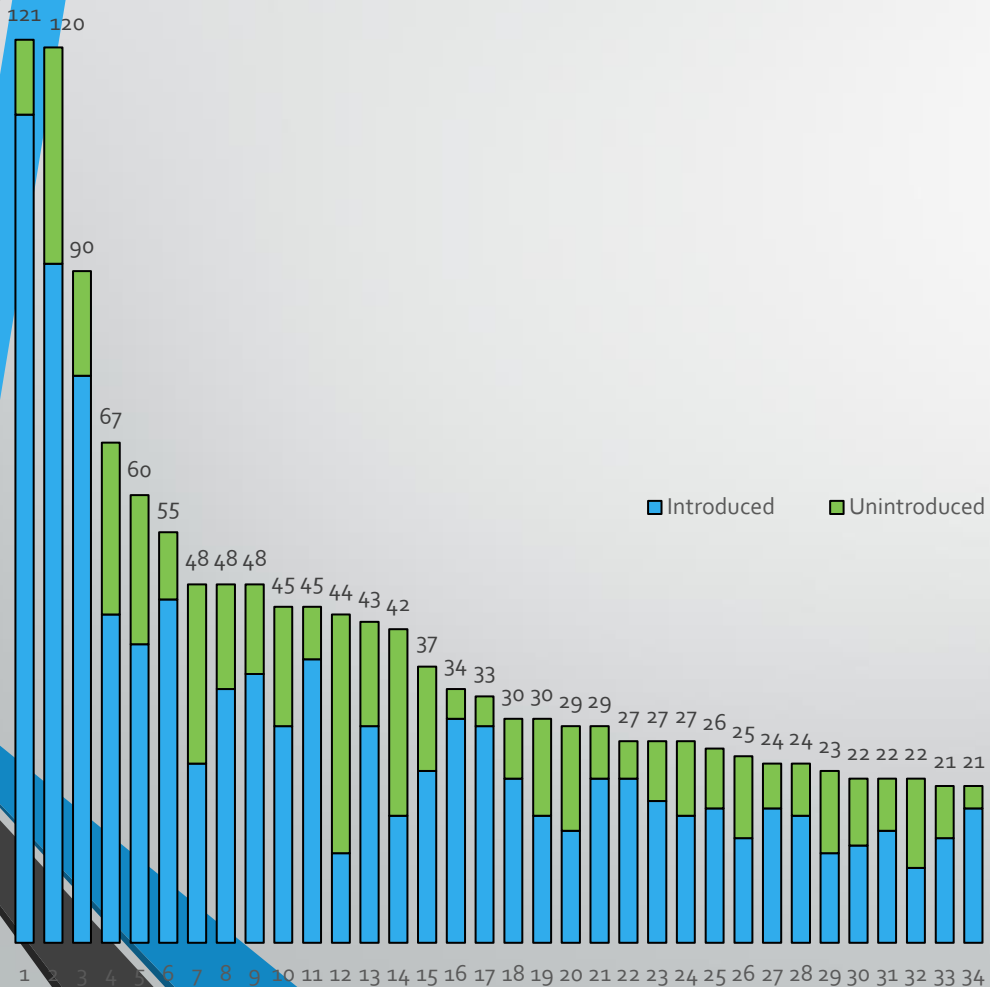
2021 Introduced Measures



2021 Unintroduced Measures



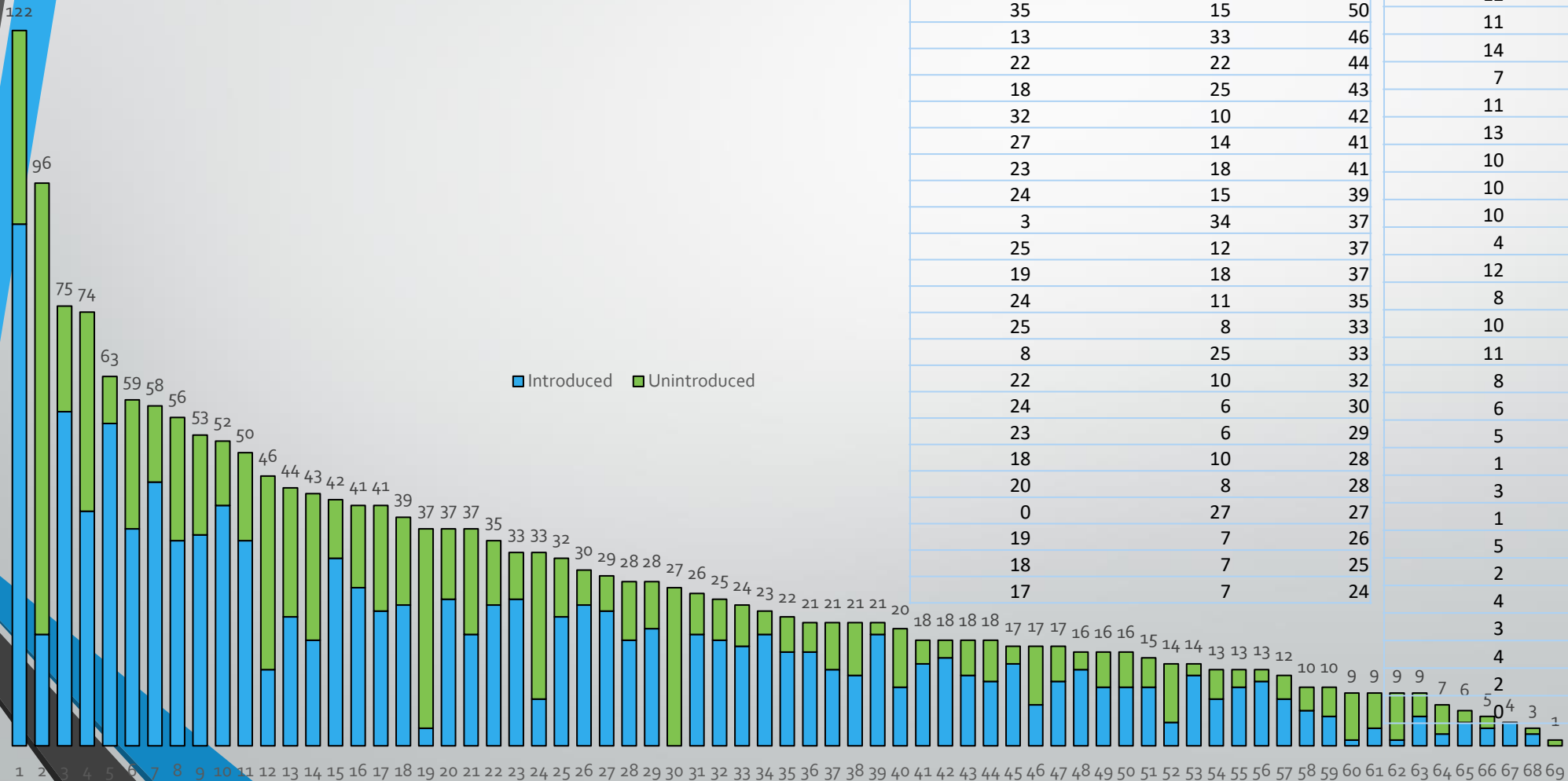
# 2017 LC Request by Representatives



Introduced	Unintroduced	Total	Introduced	Unintroduced	Total
111	10	121	18	3	21
91	29	120	17	4	21
76	14	90	16	4	20
44	23	67	19	1	20
40	20	60	14	5	19
46	9	55	12	6	18
24	24	48	15	3	18
34	14	48	12	3	15
36	12	48	13	1	14
29	16	45	12	1	13
38	7	45	8	5	13
12	32	44	10	2	12
29	14	43	10	1	11
17	25	42	2	8	10
23	14	37	3	7	10
30	4	34	7	3	10
29	4	33	6	3	9
22	8	30	5	4	9
17	13	30	5	3	8
15	14	29	3	5	8
22	7	29	8	0	8
22	5	27	3	4	7
19	8	27	5	2	7
17	10	27	1	5	6
18	8	26	2	3	5
14	11	25	2	3	5
18	6	24	2	3	5
17	7	24	4	1	5
12	11	23	2	2	4
13	9	22	2	2	4
15	7	22	4	0	4
10	12	22	1	3	4
14	7	21	2	2	4
			1	1	2
			1	0	1
			0	1	1
			2	0	2
			1	0	1
			1	0	1

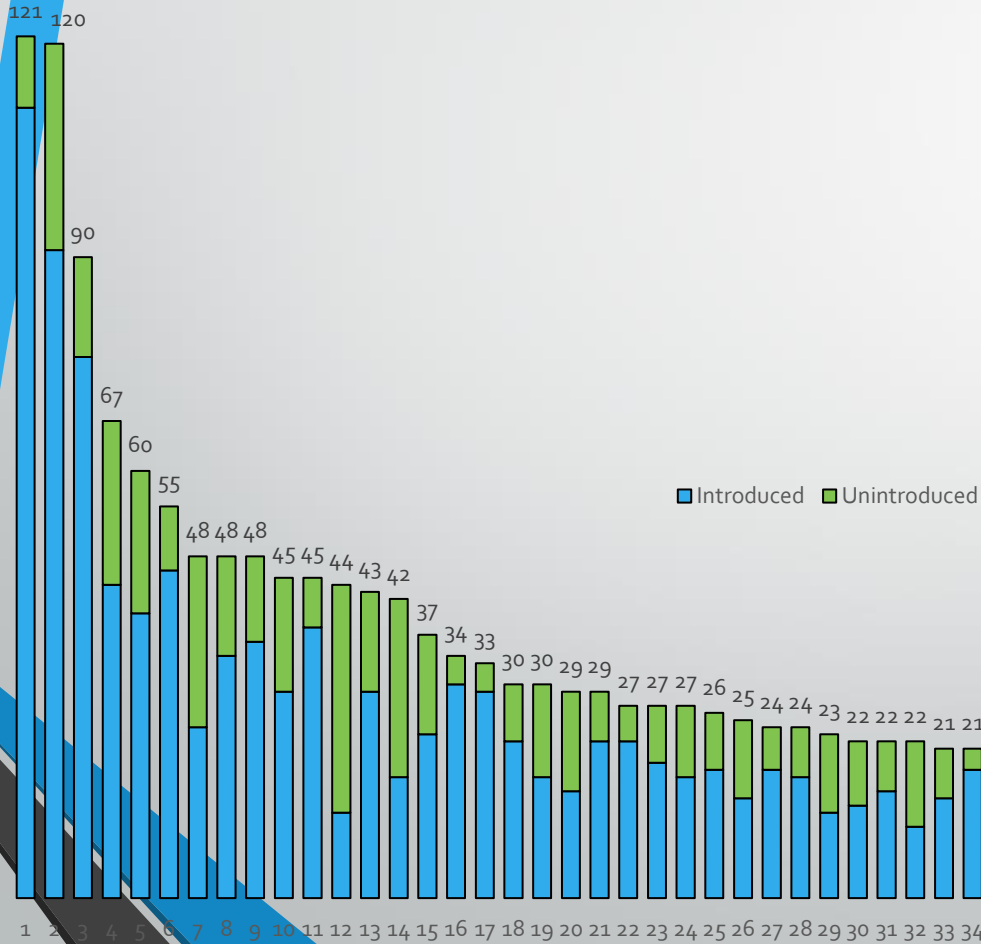


# 2019 LC Request by Representatives



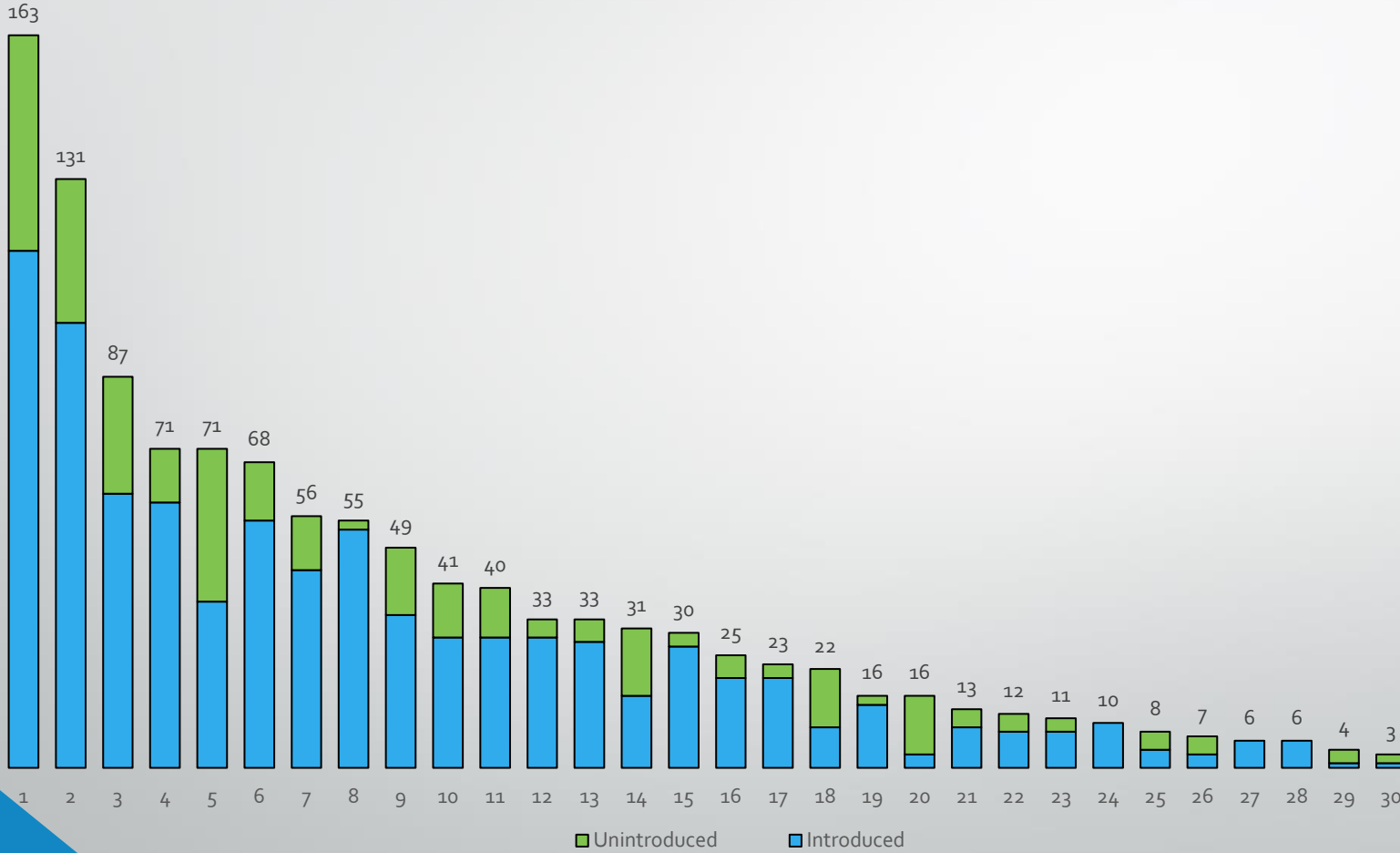
Introduced	Unintroduced	Total	Introduced	Unintroduced	Total
89	33	122	19	4	23
19	77	96	16	6	22
57	18	75	16	5	21
40	34	74	13	8	21
55	8	63	12	9	21
37	22	59	19	2	21
45	13	58	10	10	20
35	21	56	14	4	18
36	17	53	15	3	18
41	11	52	12	6	18
35	15	50	11	7	18
13	33	46	14	3	17
22	22	44	7	10	17
18	25	43	11	6	17
32	10	42	13	3	16
27	14	41	10	6	16
23	18	41	10	6	16
24	15	39	10	5	15
3	34	37	10	4	14
25	12	37	4	10	14
19	18	37	12	2	14
24	11	35	8	5	13
25	8	33	10	3	13
8	25	33	11	2	13
22	10	32	8	4	12
24	6	30	6	4	10
23	6	29	5	5	10
18	10	28	1	8	9
20	8	28	3	6	9
0	27	27	1	8	9
19	7	26	5	4	9
18	7	25	2	5	7
17	7	24	4	2	6
			3	2	5
			4	0	4
			3	2	5
			4	0	4
			9	9	18
			9	9	18
			17	17	34
			17	17	34
			16	16	32
			16	16	32
			16	16	32
			15	15	30
			14	14	28
			14	14	28
			13	13	26
			13	13	26
			13	13	26
			12	12	24
			10	10	20
			9	9	18
			9	9	18
			9	9	18
			9	9	18
			7	7	14
			6	6	12
			5	5	10
			4	4	8
			3	3	6
			2	2	4
			1	1	2
			1	1	2

# 2021 LC Request by Representatives



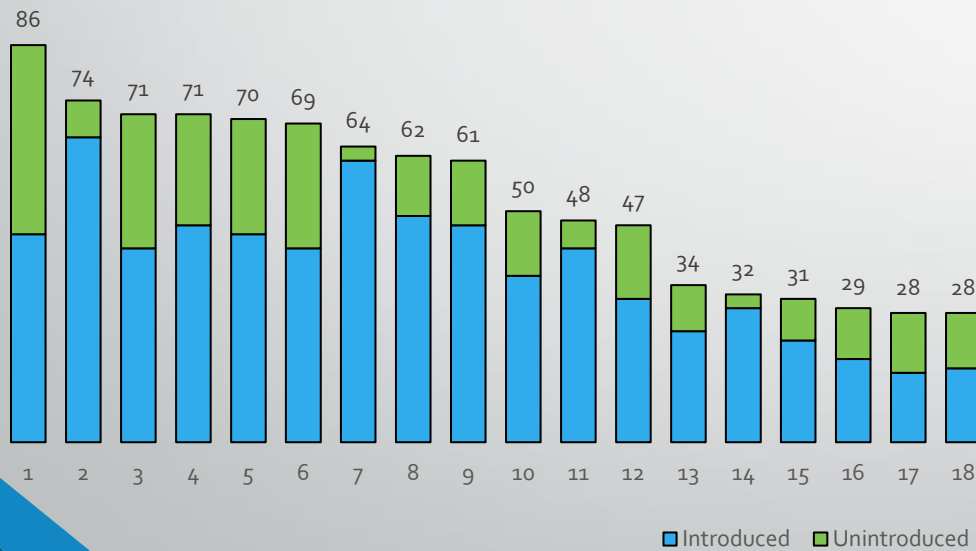
Introduced	Unintroduced	Total	Introduced	Unintroduced	Total
111	10	121	18	3	21
91	29	120	17	4	21
76	14	90	16	4	20
44	23	67	19	1	20
40	20	60	14	5	19
46	9	55	12	6	18
24	24	48	15	3	18
34	14	48	12	3	15
36	12	48	13	1	14
29	16	45	12	1	13
38	7	45	8	5	13
12	32	44	10	2	12
29	14	43	10	1	11
17	25	42	2	8	10
23	14	37	3	7	10
30	4	34	7	3	10
29	4	33	6	3	9
22	8	30	5	4	9
17	13	30	5	3	8
15	14	29	3	5	8
22	7	29	8	0	8
22	5	27	3	4	7
19	8	27	5	2	7
17	10	27	1	5	6
18	8	26	2	3	5
14	11	25	2	3	5
18	6	24	4	1	5
17	7	24	2	2	4
12	11	23	2	2	4
13	9	22	2	2	4
15	7	22	4	0	4
10	12	22	1	3	4
14	7	21	2	2	4
			1	1	2
			1	0	1
			0	1	1

# 2017 LC Request by Senators



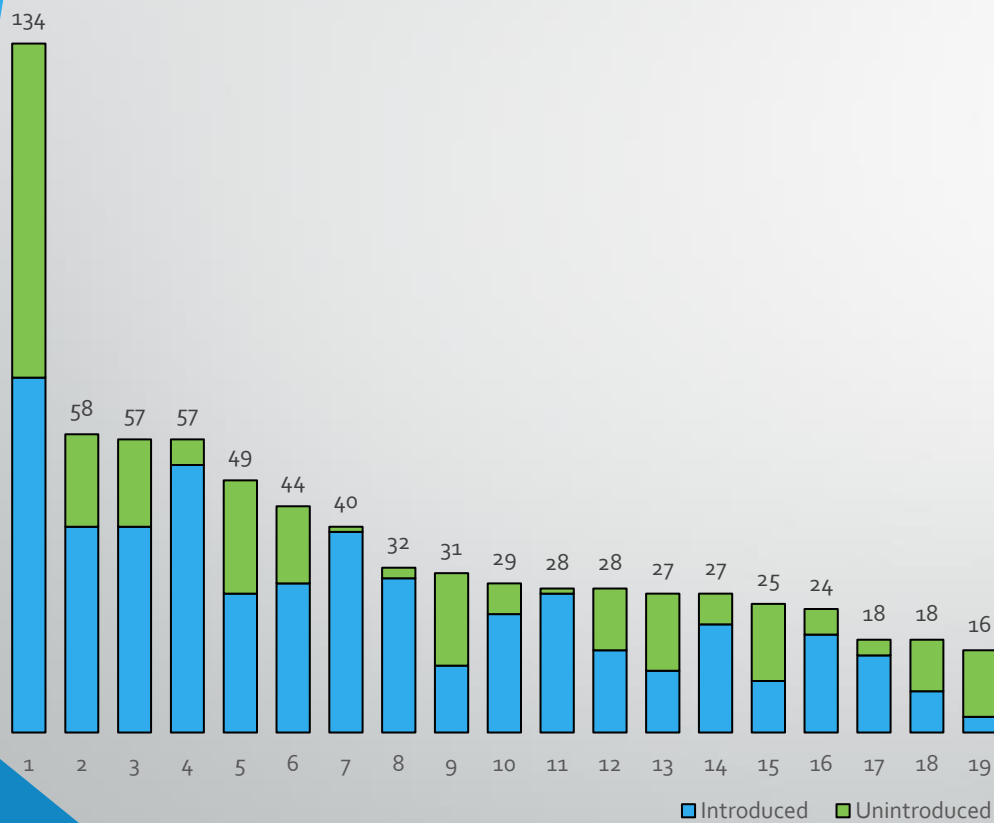
Introduced	Unintroduced	Total
115	48	163
99	32	131
61	26	87
59	12	71
37	34	71
55	13	68
44	12	56
53	2	55
34	15	49
29	12	41
29	11	40
29	4	33
28	5	33
16	15	31
27	3	30
20	5	25
20	3	23
9	13	22
14	2	16
3	13	16
9	4	13
8	4	12
8	3	11
10	0	10
4	4	8
3	4	7
6	0	6
6	0	6
1	3	4
1	2	3
0	2	2
1	0	1

# 2019 LC Request by Senators



Introduced	Unintroduced	Total
45	41	86
66	8	74
42	29	71
47	24	71
45	25	70
42	27	69
61	3	64
49	13	62
47	14	61
36	14	50
42	6	48
31	16	47
24	10	34
29	3	32
22	9	31
18	11	29
15	13	28
16	12	28
13	14	27
21	2	23
18	5	23
15	6	21
15	4	19
10	8	18
11	7	18
10	5	15
5	8	13
7	5	12
8	2	10
3	3	6
1	3	4

# 2021 LC Request by Senators

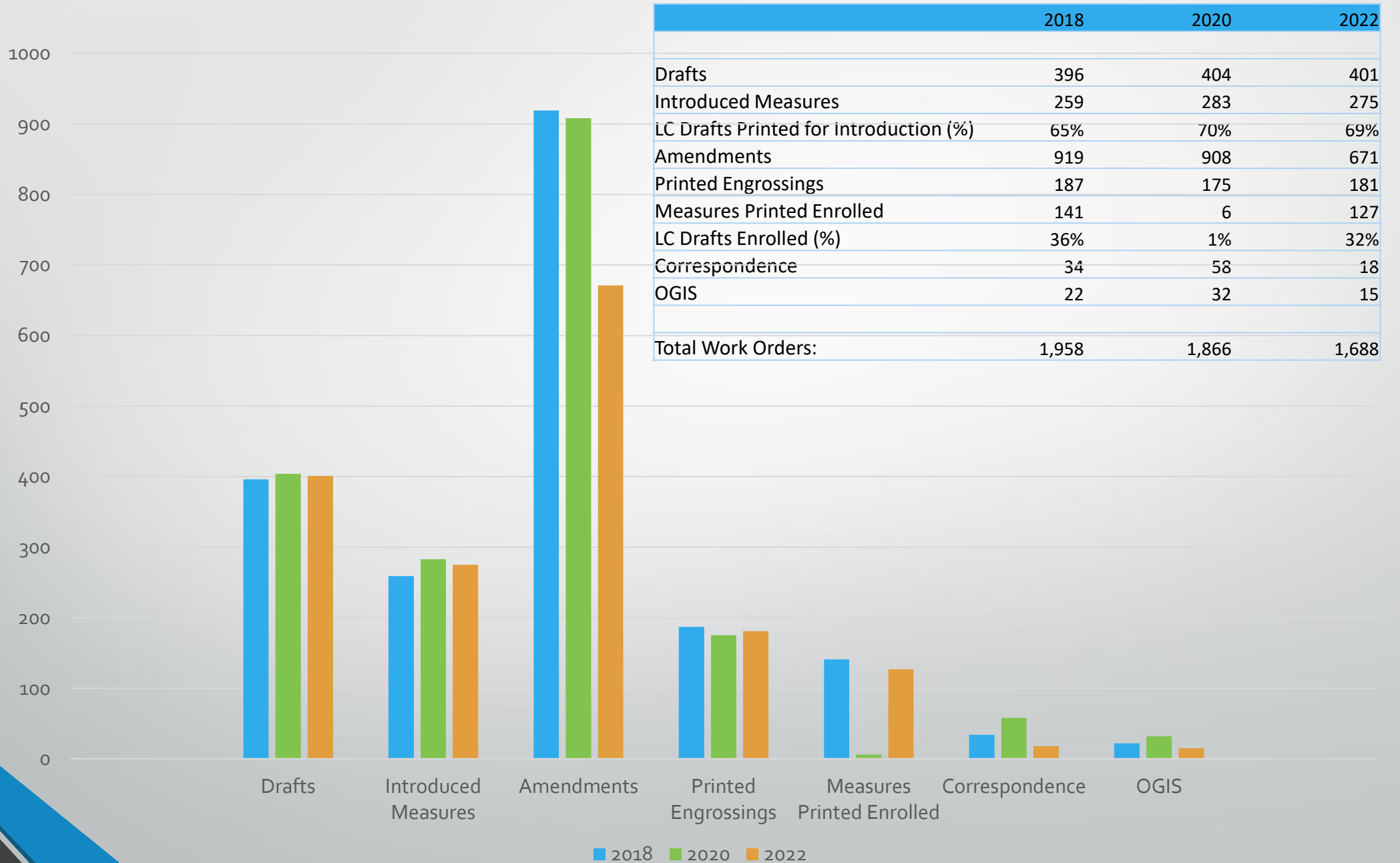


Introduced	Unintroduced	Total
69	65	134
40	18	58
40	17	57
52	5	57
27	22	49
29	15	44
39	1	40
30	2	32
13	18	31
23	6	29
27	1	28
16	12	28
12	15	27
21	6	27
10	15	25
19	5	24
15	3	18
8	10	18
3	13	16
15	0	15
9	6	15
14	0	14
3	10	13
10	3	13
6	5	11
8	3	11
6	4	10
6	2	8
2	5	7
6	0	6
3	1	4
3	0	3
2	1	3
2	0	2
	1	1



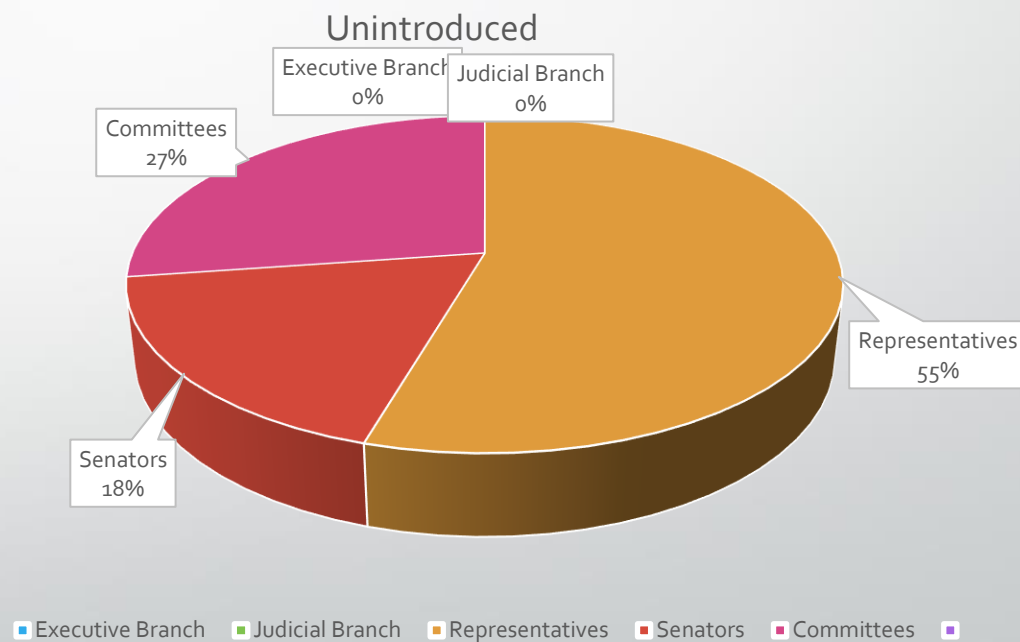
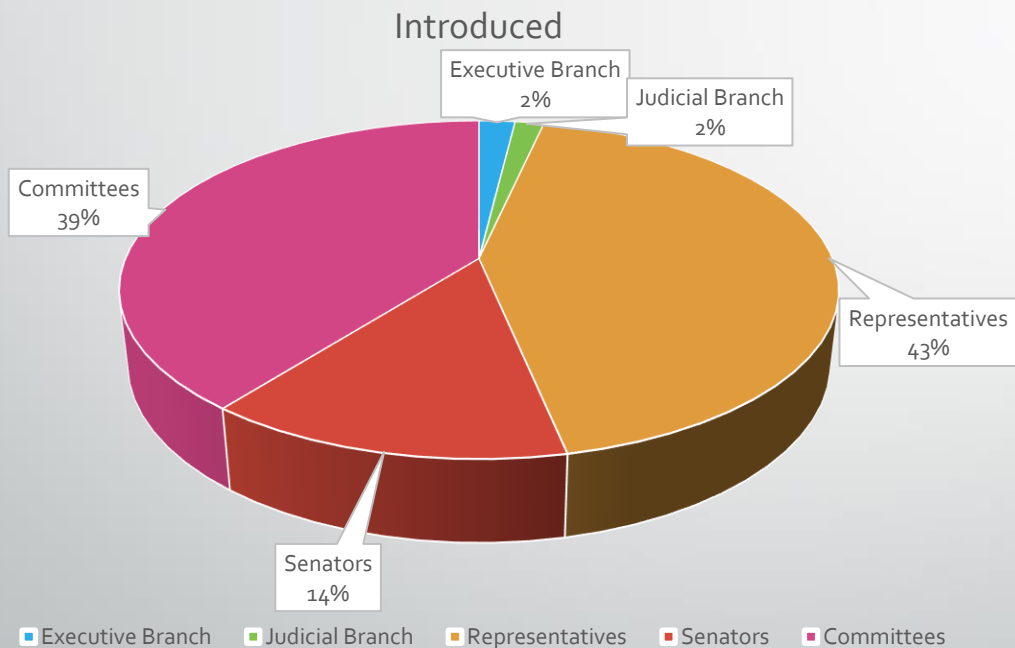
# Workload Statistics for Short Sessions

# Legislative Counsel Work Orders



# 2018 Introduced Measures

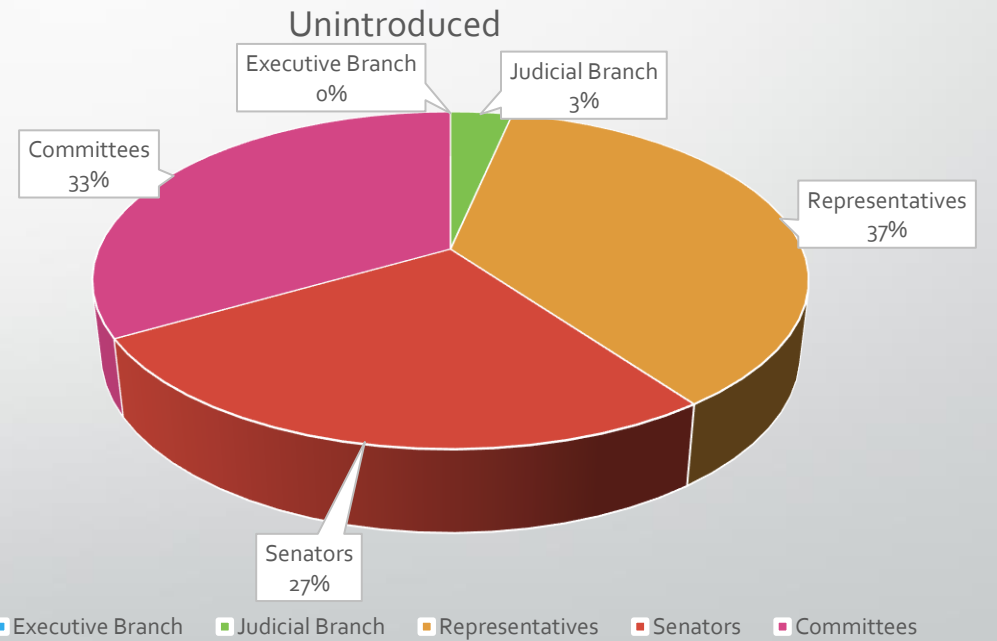
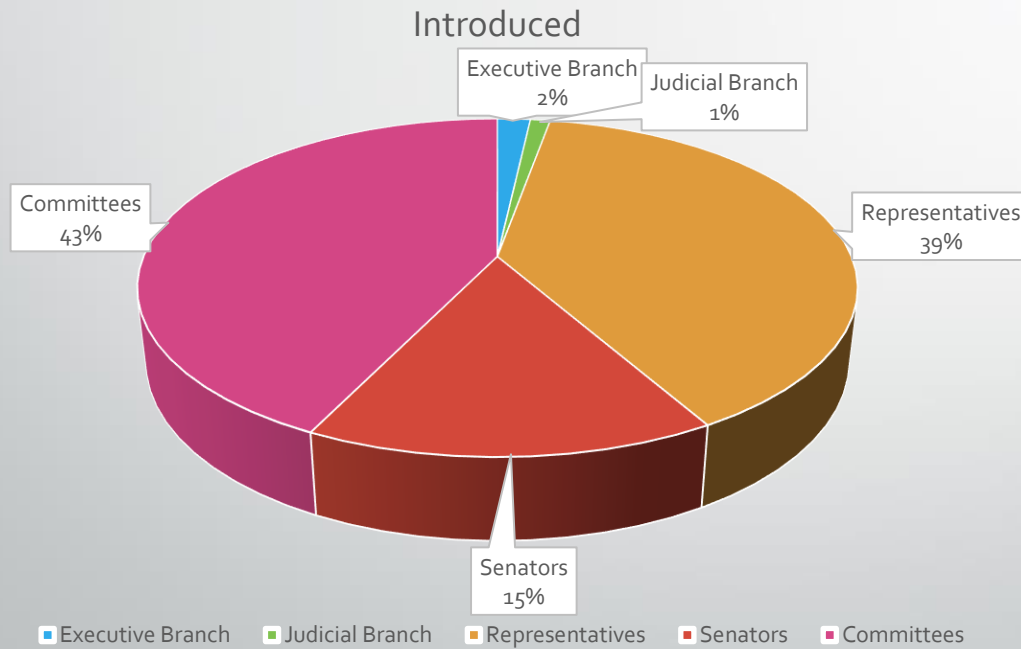
	Introduced	Unintroduced	Total
Executive Branch	5	0	5
Judicial Branch	4	0	4
Representatives	112	12	124
Senators	36	4	40
Committees	102	6	108
	259	22	281





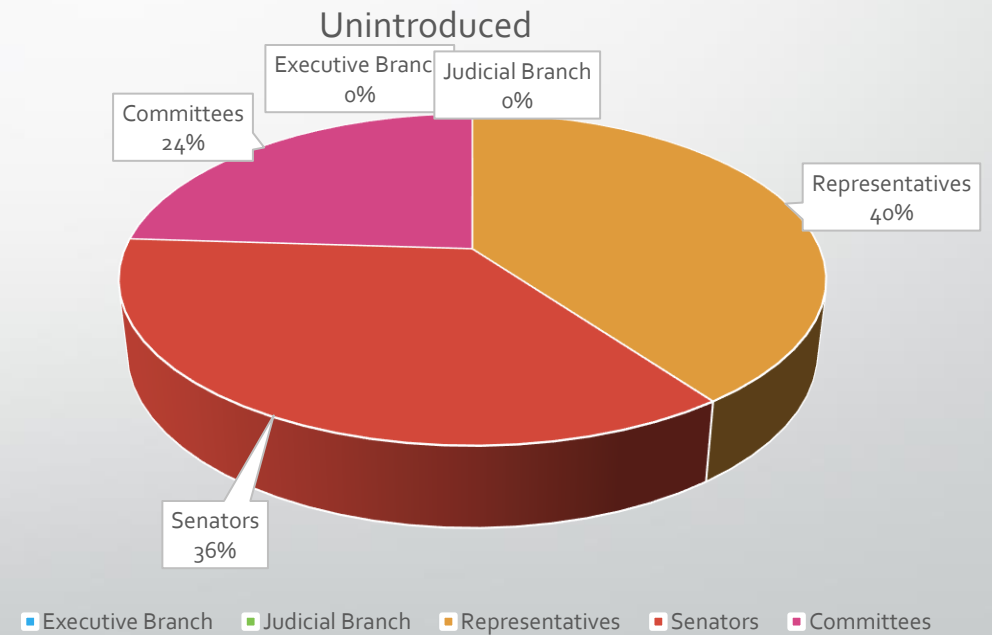
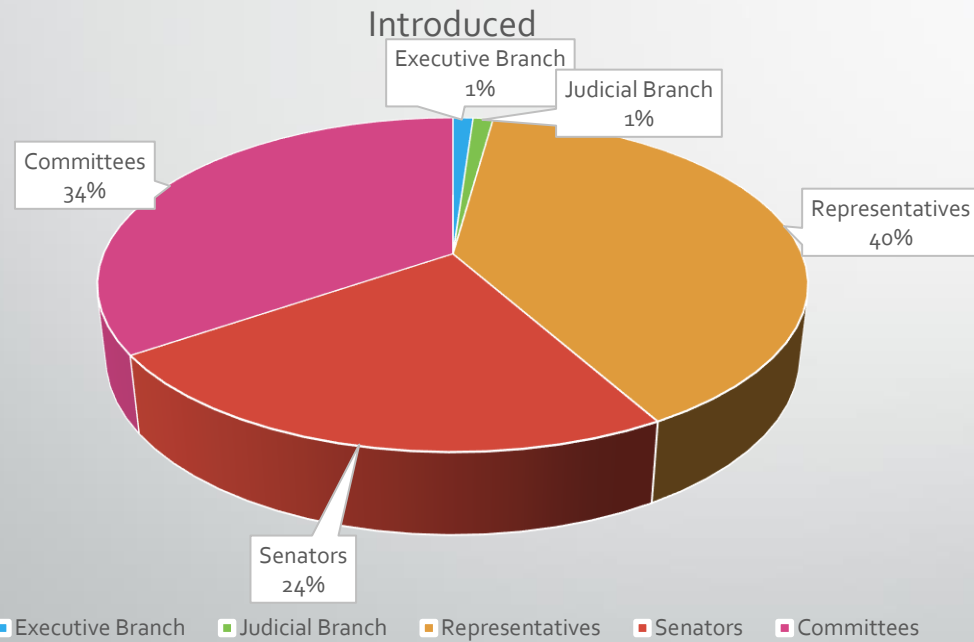
# 2020 Introduced Measures

	Introduced	Unintroduced	Total
Executive Branch	5	0	5
Judicial Branch	3	1	4
Representatives	110	11	121
Senators	44	8	52
Committees	121	10	131
	283	30	313



# 2022 Introduced Measures

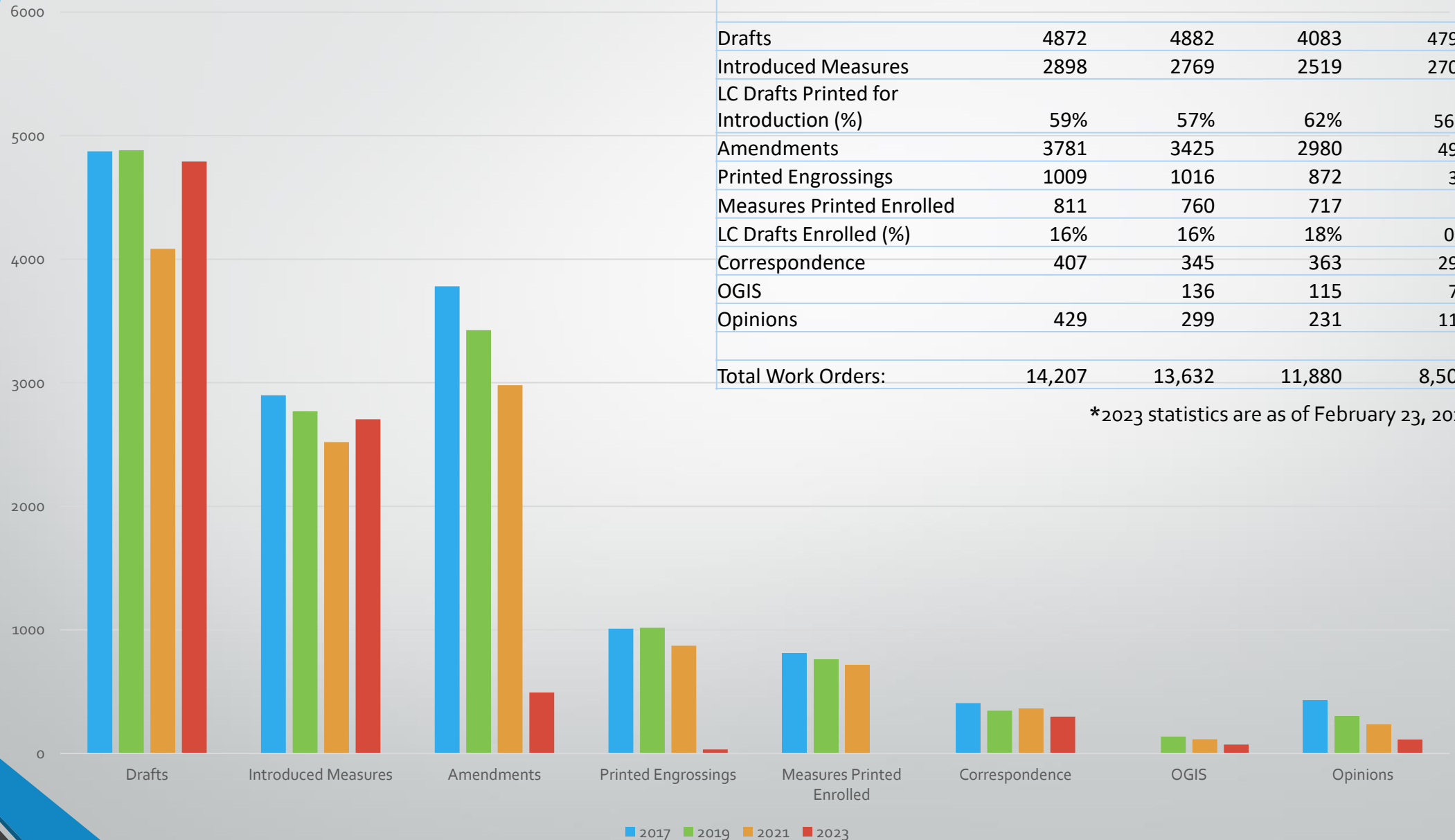
	Introduced	Unintroduced	Total
Executive Branch	3	0	3
Judicial Branch	3	0	3
Representatives	109	10	119
Senators	65	9	74
Committees	95	6	101
	275	25	300





# Workload Statistics Including 2023 Session

# Legislative Counsel Work Orders



\*2023 statistics are as of February 23, 2023

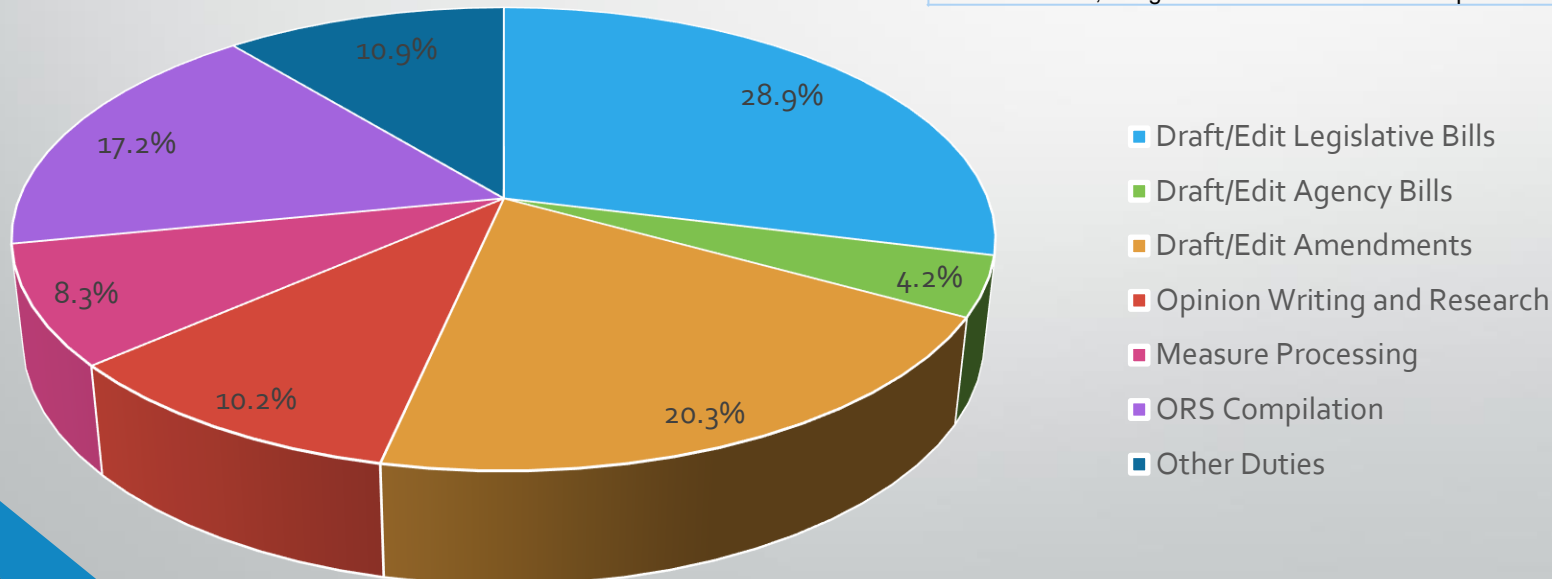


Estimated costs per bill

# Estimated Breakdown of Office Duties during 19-21 Biennium

Office Activity	Budgeted Amount in 19-21 LAB	Percentage of 19-21 LAB	Work Orders for the 2020 & 2021 Session	Estimated Cost per Work Order for the 2020 & 2021 Session
Draft/Edit Legislative Bills	5,070,306	28.9%	4,171	\$1,216
Draft/Edit Agency Bills	730,855	4.2%	652	\$1,121
Draft/Edit Amendments	3,562,918	20.3%	4,242	\$840
Opinion Writing and Research	1,781,459	10.2%	231	\$7,712
Measure Processing	1,461,710	8.3%	5,548	\$263
ORS Compilation	3,014,777	17.2%		
Other Duties	1,918,494	10.9%		
<b>*Total 19-21 LAB:</b>	<b>17,540,518</b>	<b>100%</b>		

\*Excludes ORS, Oregon Laws and in-house IT expenses

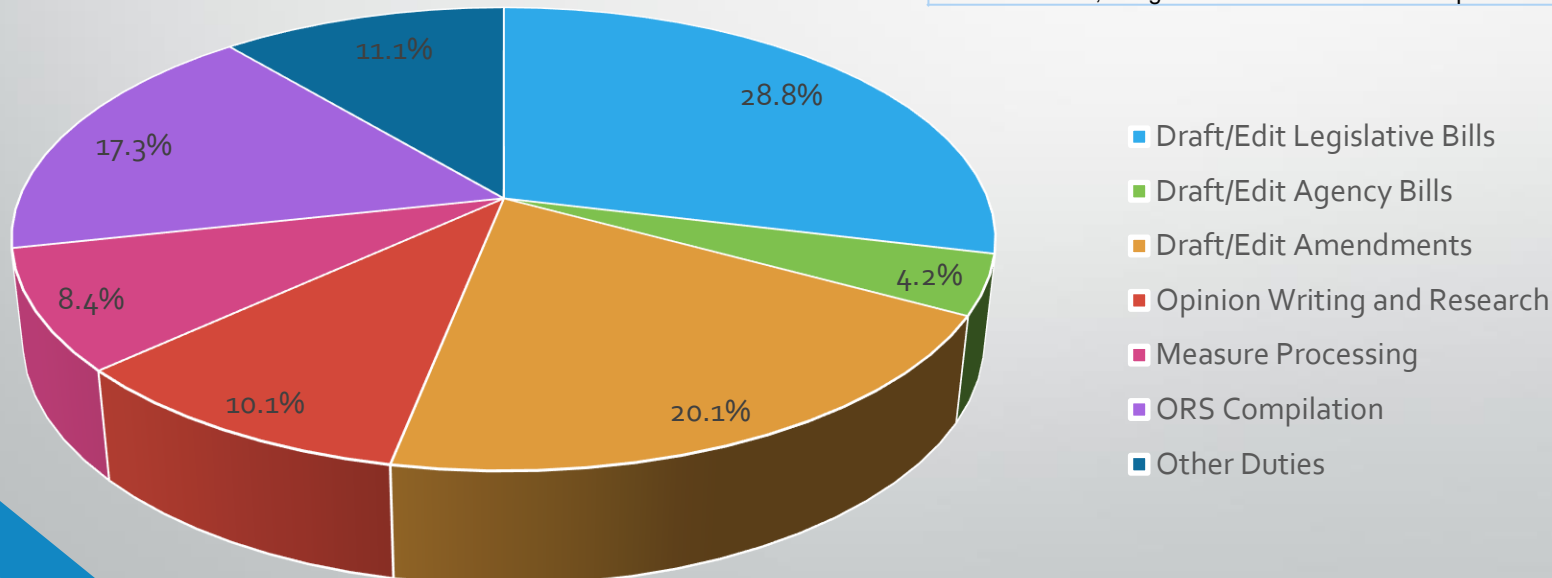


Legislative Counsel Office Activities as Percentage of 2019-21 LAB

# Estimated Breakdown of Office Duties during 21-23 Biennium

Office Activity	Budgeted Amount in 21-23 LAB	Percentage of 21-23 LAB	Estimated Work Orders for the 2022 & 2023 Session	Estimated Cost per Work Order for the 2022 & 2023 Session
Draft/Edit Legislative Bills	5,717,441	28.8%	4,900	\$1,167
Draft/Edit Agency Bills	827,136	4.2%	654	\$1,265
Draft/Edit Amendments	3,997,550	20.1%	4,500	\$888
Opinion Writing and Research	1,998,775	10.1%	250	\$7,995
Measure Processing	1,668,052	8.4%	5,500	\$303
ORS Compilation	3,439,783	17.3%		
Other Duties	2,202,524	11.1%		
<b>*Total 21-23 LAB:</b>	<b>19,851,260</b>	<b>100%</b>		

\*Excludes ORS, Oregon Laws and in-house IT expenses



Legislative Counsel Office Activities as Percentage of 2021-23 LAB