

**ENTERPRISE SCHOOL  
DISTRICT #21 SUICIDE  
PREVENTION,  
INTERVENTION AND  
POSTVENTION**





## PREVENTION SUPPORTS FROM STAFF:

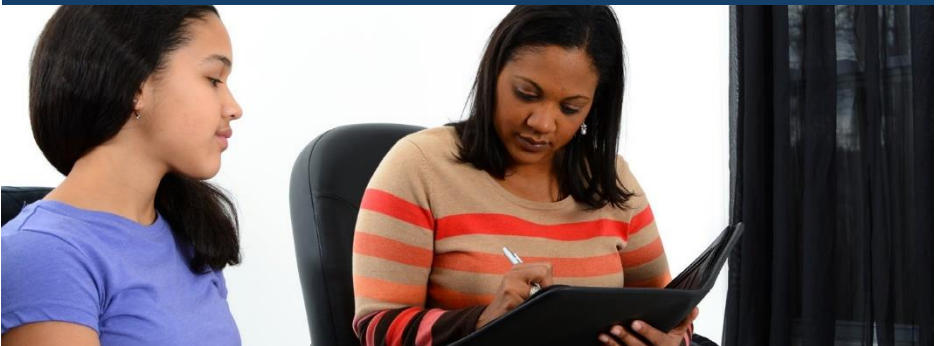
- ❖ Key staff Trained in ASIST (Applied Suicide Intervention Skills Training)
- ❖ Adverse Childhood Experiences (ACES) training
- ❖ Conscious Discipline and Sound Discipline in use
- ❖ School Counselor available in each school building
- ❖ Family Health Associates partnership and outside mental health counselor availability

## PREVENTION SUPPORTS FROM STUDENTS:

- ❖ K-12 mental health education based on state standards
- ❖ Education on personal safety, how to report unsafe behavior, risk factors and warning signs
- ❖ SAFE Schools tip line access to report unsafe behavior

## PREVENTION SUPPORTS FROM PARENTS:

- ❖ Access to school staff to report behavior
- ❖ SAFE Schools tip line access to report concerns



### **National Suicide Prevention Lifeline**

1-800-272-TALK (8255)

En español: 1-888-628-9454

TTY: 1-800-799-4TTY (4889)

[www.suicidepreventionlifeline.org](http://www.suicidepreventionlifeline.org)

### **Oregon Youth Line**

1-877-968-8491

**Text teen2teen to 839863**

[www.orgeonyouthline.org](http://www.orgeonyouthline.org)

### **Safe Oregon Reporting**

Online: [www.safeoregon.com](http://www.safeoregon.com)

Call: or Text 844-472-3367

Email: [tip@safeoregon.com](mailto:tip@safeoregon.com)

## **WARNING SIGNS FOR SUICIDE**

- ❖ Threatening to hurt or kill themselves
- ❖ Looking for ways to kill themselves-seeking access to pills, weapons, or other means
- ❖ Talking or writing about death, dying or suicide
- ❖ Talking about suicide and then appearing to be fine
- ❖ Giving away possessions, changes in medication, not eating, not sleeping in combination with talk of suicide



**If a suicidal attempt, gesture, or ideation occurs or is recognized,** report it to the school counselor or school administrator. Call 911, if there is imminent danger. A suicide risk questionnaire is conducted by a trained school staff member (counselor). The screener will do the following:

- ❖ Interview student using suicide risk questionnaire screening form
- ❖ Contact parents to inform and to obtain further information, if needed
- ❖ Complete a Suicide Safety Plan, if needed
- ❖ Take student to Emergency Room, Community crisis mental health agency responds for appropriate placement/treatment
- ❖ Follow up with mental health services on safety plan, continued counseling or services

## **SCHOOL/DISTRICT RESPONSE:**

We will respond to the tragedy in a manner which appropriately supports students and school community impacted by this tragedy. Enterprise School District will follow the same protocol for all tragic staff/ student deaths, regardless of circumstances. Once the information is confirmed to be accurate, the Superintendent will activate the following response:

## **CRISIS RESPONSE:**

- ❖ Determine level of intervention needed
- ❖ Activate Crisis team
- ❖ Contact the family, see what their wishes are
- ❖ Inform faculty and staff
- ❖ Inform students
- ❖ Identify at risk students and staff
- ❖ Create safe room and compile resources there
- ❖ Be aware that persons may still be traumatized months after the event. Refresh staff on prevention protocols and be responsive to signs of risk

## **GOALS OF POSTVENTION:**

- ❖ Support the grieving process
- ❖ Prevent imitative suicides
- ❖ Reestablish healthy school climate
- ❖ Provide long-term surveillance

### **National Suicide Prevention Lifeline**

1-800-272-TALK

[www.suicidepreventionlifeline.org](http://www.suicidepreventionlifeline.org)

### **Safe Oregon Reporting**

Online: [www.safeoregon.com](http://www.safeoregon.com)

Call: or Text 844-472-3367

Email: [tip@safeoregon.com](mailto:tip@safeoregon.com)

### **Oregon Youth Line**

1-877-968-8491

**Text teen2teen to 839863**

[www.orgeonyouthline.org](http://www.orgeonyouthline.org)

## **Enterprise School District #21**

201 SE 4<sup>th</sup> St.

Enterprise, OR 97828

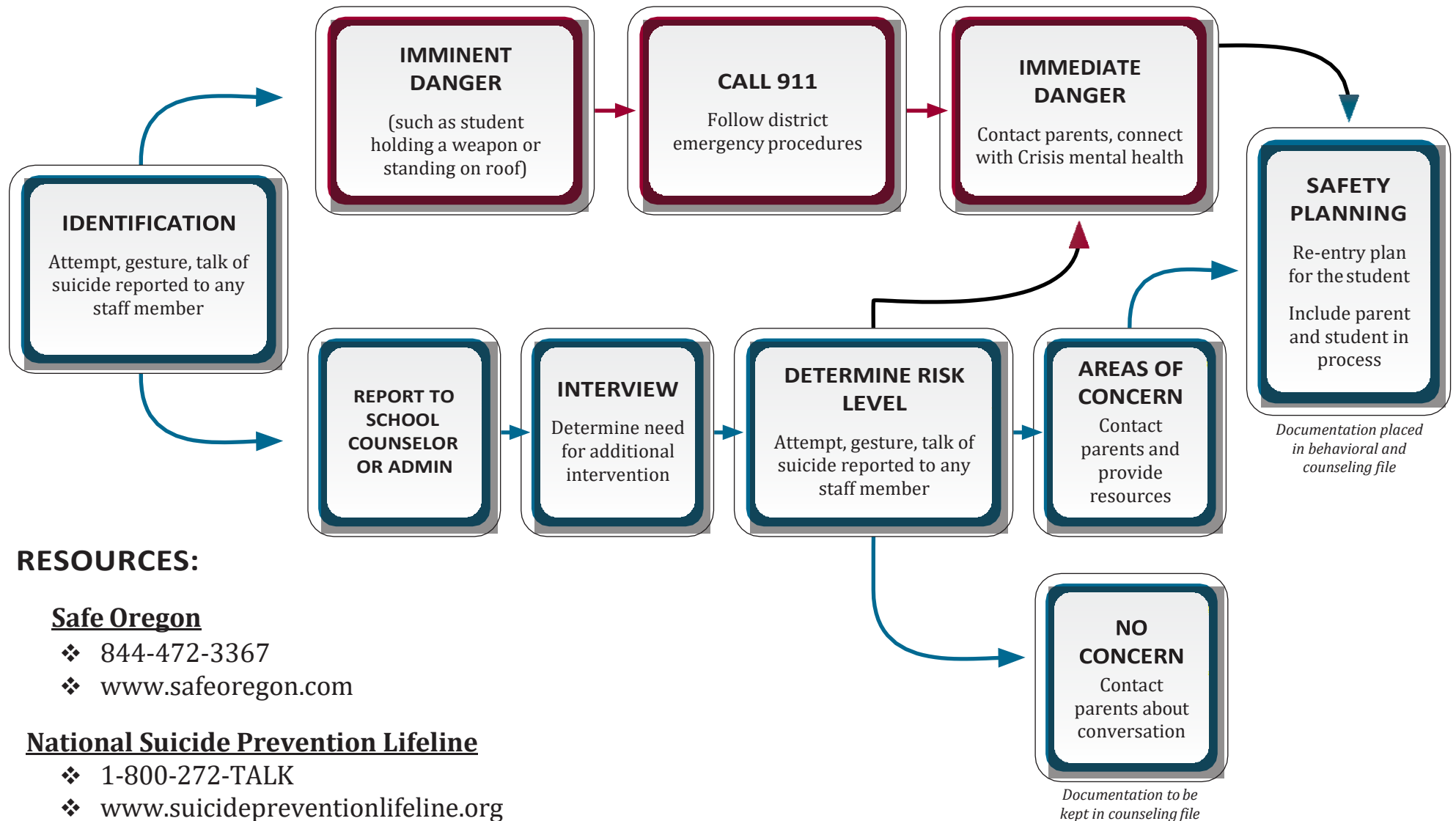
Phone: 541-426-3812

Fax: 541-426-4485

[www.enterprise.k12.or.us](http://www.enterprise.k12.or.us)

# SUICIDE RISK ASSESSMENT PROCESS FLOW CHART

## ENTERPRISE SCHOOL DISTRICT #21



### RESOURCES:

#### Safe Oregon

- ❖ 844-472-3367
- ❖ [www.safeoregon.com](http://www.safeoregon.com)

#### National Suicide Prevention Lifeline

- ❖ 1-800-272-TALK
- ❖ [www.suicidepreventionlifeline.org](http://www.suicidepreventionlifeline.org)

#### Oregon Youth Line

- ❖ 1-877-968-8491