

# NUKEMAP

1. Drag the marker to wherever you'd like to target  
 Or you can select a preset:

2. Enter a yield (in kilotons):

3. Basic options: Height of burst:  Airburst  Surface  
 Other effects:  Casualties  Radioactive fallout

4. Click the "Detonate" button below

Estimated fatalities: **53,800**

Estimated injuries: **134,030**

In any given 24-hour period, there are on average 403,648 people in the light (1 psi) blast range of the simulated detonation.  
 Modeling casualties from a nuclear attack is difficult. These numbers should be seen as evocative, not definitive. Fallout effects are deliberately ignored because they can depend on what actions people take after the detonation. For more information about the model, click [here](#).

### Effect distances for a 800 kiloton airburst:

- Fireball radius:** 0.88 km (2.45 km<sup>2</sup>)  
 Maximum size of the nuclear fireball. Relevance to damage on the ground depends on the height of detonation. If it touches the ground, the amount of radioactive fallout is significantly increased. Anything inside the fireball is effectively vaporized. Minimum burst height for negligible fallout: 0.8 km.
- Moderate blast damage radius (5 psi):** 6.53 km (134 km<sup>2</sup>)  
 At 5 psi overpressure, most residential buildings collapse, injuries are universal.

## National Security Reality Check

### Western Air Defense Sector

### Portland Air National Guard Base -

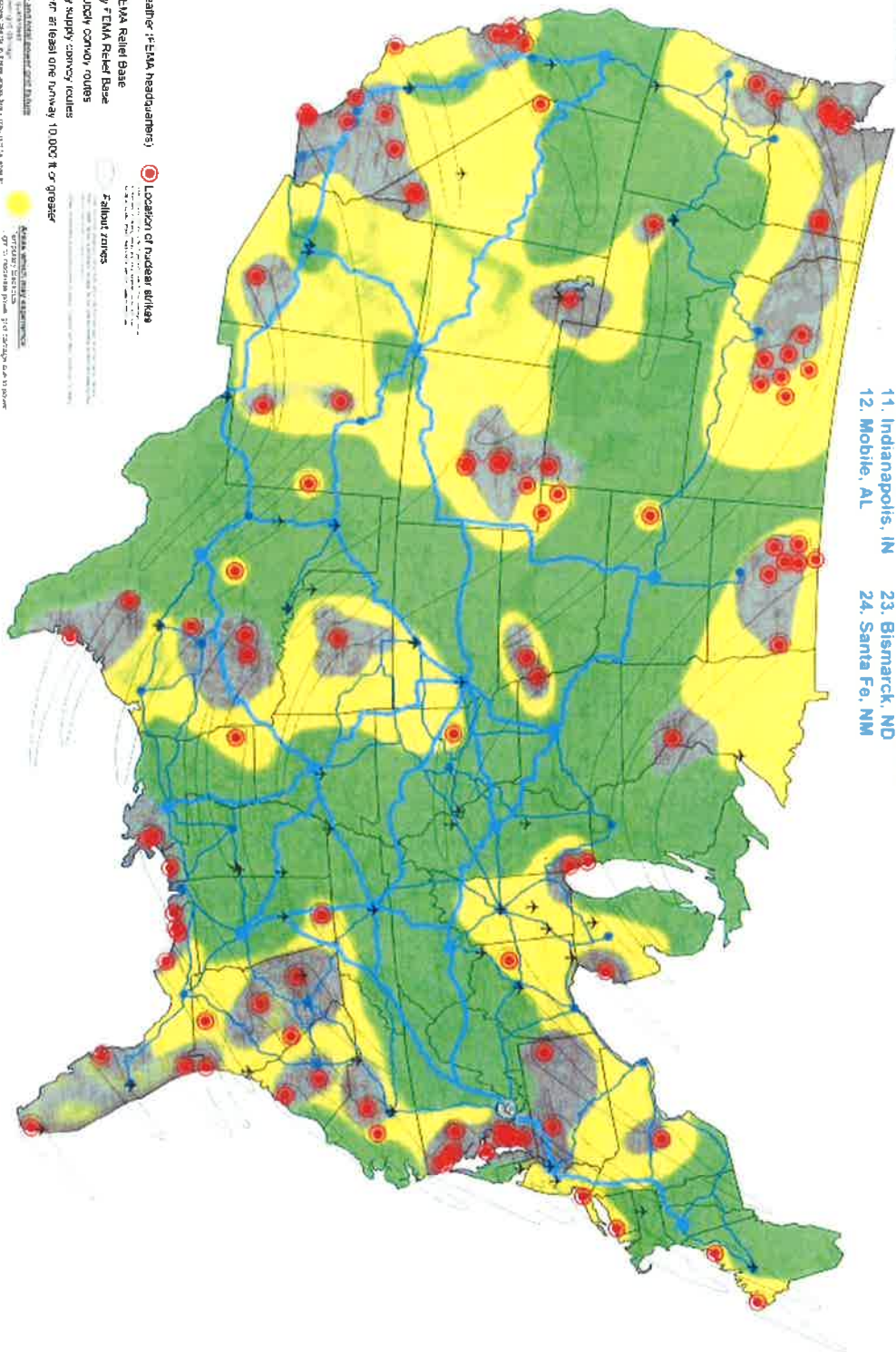
From the Desk of Senator Boquist

### Primary FEMA Relief Bases:

- 1. Mount Weather VA
- 2. Frankfort, KY
- 3. Philadelphia, PA
- 4. Concord, NH
- 5. Nashville, TN
- 6. Montgomery, AL
- 7. Baton Rouge, LA
- 8. Little Rock, AK
- 9. Springfield, IL
- 10. Des Moines, IA
- 11. Topeka, KS
- 12. Goodfellow AFB, TX
- 13. Amarillo, TX
- 14. Pierre, SD
- 15. Four Corners
- 16. Phoenix, AZ
- 17. Radding, CA
- 18. Fresno, CA
- 19. Honolulu, HI

### Secondary FEMA Relief Bases:

- 1. Bangor, ME
- 2. Buffalo, NY
- 3. Raleigh, NC
- 4. Columbia, SC
- 5. Orlando, FL
- 6. Tallahassee, FL
- 7. Athens, GA
- 8. Columbus, OH
- 9. Cleveland, OH
- 10. Lansing, MI
- 11. Indianapolis, IN
- 12. Mobile, AL
- 13. Jackson, MS
- 14. Jefferson City, MO
- 15. Madison, WI
- 16. Houston, TX
- 17. Austin, TX
- 18. Waco, TX
- 19. Lubbock, TX
- 20. Sheppard AFB, TX
- 21. El Paso, TX
- 22. McConnell AFB, KS
- 23. Bismarck, ND
- 24. Santa Fe, NM
- 25. Helena, MT
- 26. Boise, ID
- 27. NAS El Centro, CA
- 28. San Bernardino, CA
- 29. Riverside, CA
- 30. Bakersfield, CA
- 31. Sacramento, CA
- 32. Eugene, OR
- 33. Goldendale, WA



- Mountain Weather (FEMA headquarters)
- Location of nuclear utilities
- Primary FEMA Relief Base
- Secondary FEMA Relief Base
- Primary supply convey routes
- Secondary supply convey routes
- ↔ Airports with at least one runway 10,000 ft or greater

**Relief zones**

**10,000 ft or greater**  
 Areas where the elevation is 10,000 feet or greater above sea level. These areas are shaded yellow on this map.

**5,000 ft or greater**  
 Areas where the elevation is 5,000 feet or greater above sea level. These areas are shaded green on this map.

**2,000 ft or greater**  
 Areas where the elevation is 2,000 feet or greater above sea level. These areas are shaded grey on this map.

**Power Plants**  
 Locations of nuclear utilities are indicated by red circles on this map.

**Power Plants (open)**  
 Locations of open power plants are indicated by red squares on this map.

**Primary supply convey routes**  
 Primary supply convey routes are indicated by blue lines on this map.

**Secondary supply convey routes**  
 Secondary supply convey routes are indicated by blue lines on this map.

**Airports with at least one runway 10,000 ft or greater**  
 Airports with at least one runway 10,000 ft or greater are indicated by black arrows on this map.

**Major highways**  
 Major highways are indicated by black lines with arrows on this map.

**Map Scale**  
 The map scale is 1:10,000,000.