

Modular Housing Hearing
Senate Legislative Committee
May 31, 2023

Blazer
INDUSTRIES, INC



Established in 1976
Located in Aumsville Oregon





PUBLIC RESTROOMS
PUMP STATIONS



SCHOOLS & CLASSROOMS



Lincoln High School, Portland (2016)



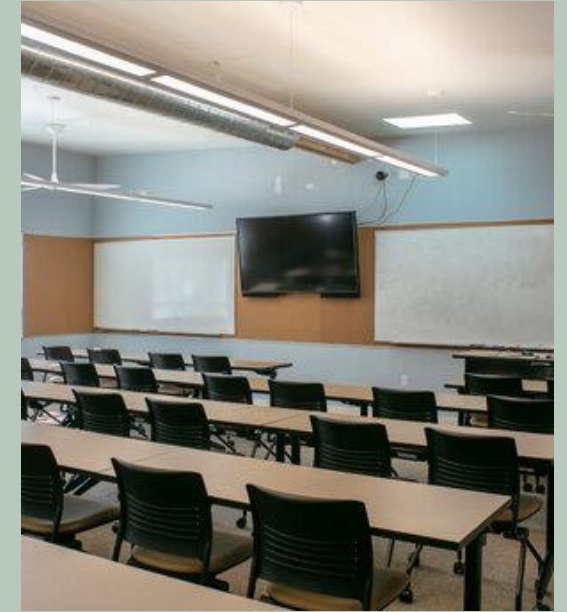
Seattle Pacific University (2000)



SAGE Classroom (2014)

SAGE Olympic College Classroom 28x32/28x64 (2017)

SAGE CLASSROOMS



SAGE Central Kitsap SD – Silverdale ES (2018)



New Camaldoni
Hermitage,
Big Sur (2009)

Taylor House, San Francisco (2009) ADU + Main house



CUSTOM HOMES,
WELLNESS FACILITIES,
OFFICES



18580 Jarrett St Condos (2017)

HOW IS MODULAR DIFFERENT THAN MANUFACTURED HOUSING?



Mobile Modular



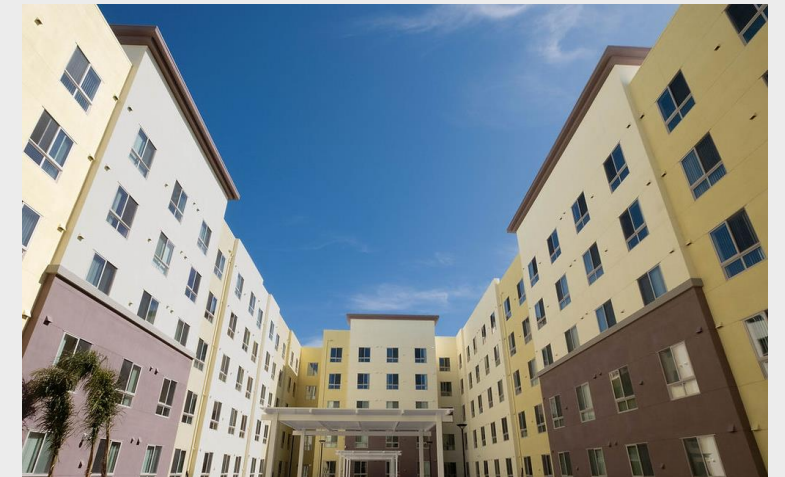
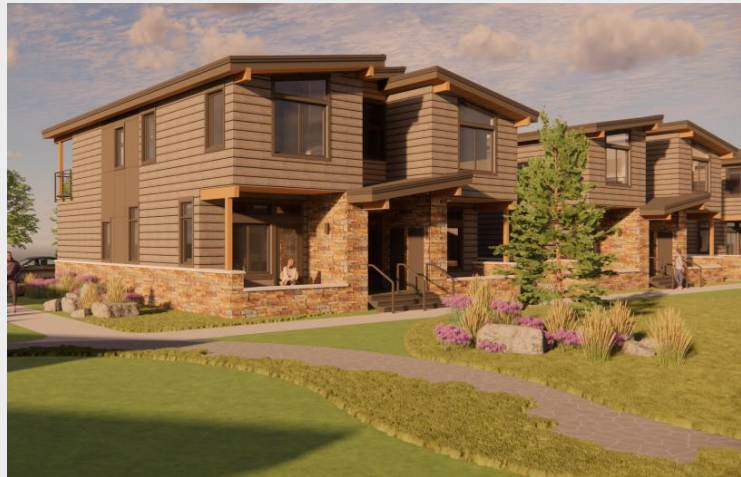
guerdon



autovol



nashua builders



Manufactured Housing



STRENGTHS OF MODULAR AND MANUFACTURED HOUSING)

1. time advantage



2 . steady crew and local management



3. designed for 60+ mph transport



4. affordability

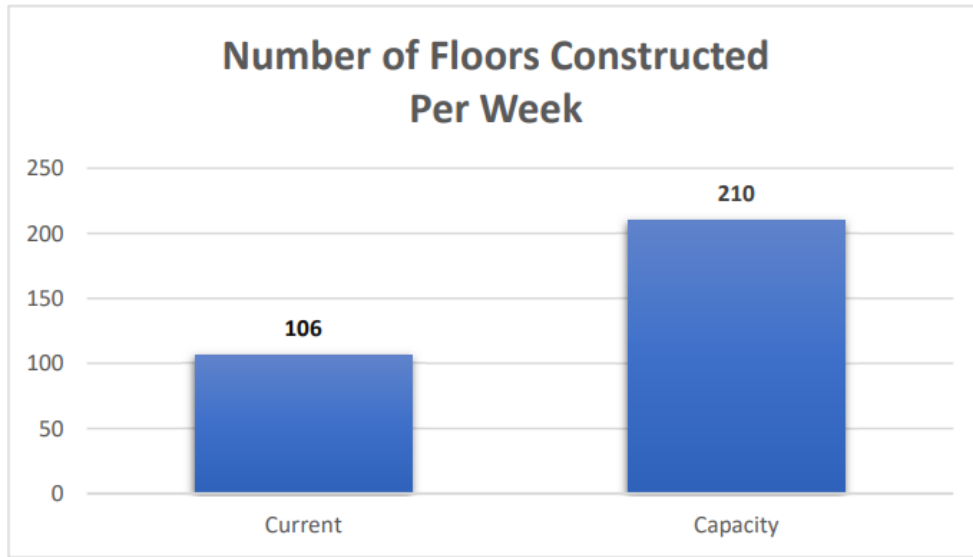


WHAT DOES A PROJECT LOOK LIKE START TO FINISH?





WHAT KIND OF FACTORY CAPACITY EXISTS IN OREGON NOW ?



Year	Mfd in Oregon	Mfd in Idaho	Mfd in Washington	Total
2019	10	17	7	34
2020	15	12	18	45
2021	8	144*	15	167
2022	10	5	17	32
Totals	43	178	57	278

manufactured housing

Kendra Cox, Blazer Industries

Kendra@blazerind.com

Phone: 503-749-1900

