



Preschool Promise Update

Joint Ways & Means Subcommittee on Education

Alyssa Chatterjee, Early Learning System Director

May 15, 2023



Key Questions

What was Preschool Promise created to do?

What has been the impact of the program?



Preschool Promise Program Overview



Preschool Promise

15% of GB

Program Overview	Preschool Promise provides families with free, high-quality preschool that uses a mixed delivery approach, giving families the ability to choose the setting that works best for them and their child.
Who is eligible?	Three- and four-year old children in families whose income is at or below 200% of the Federal Poverty Level or in foster care programs.
Service Model	<ul style="list-style-type: none">• Children receive preschool services equivalent to a kindergarten school year.• Preschool is offered in various settings, including child care centers, home-based child care, and public schools.
Annual Service Level	5,344 children
Access	Statewide across all 36 counties
Number of Grantees Providing Services	233 Grantees in various settings
2021-23 Legislatively Adopted Budget	\$113.9M total funds
2023-25 Governor's Budget	\$187.7M total funds
Funding Sources	General Fund, Early Learning Account



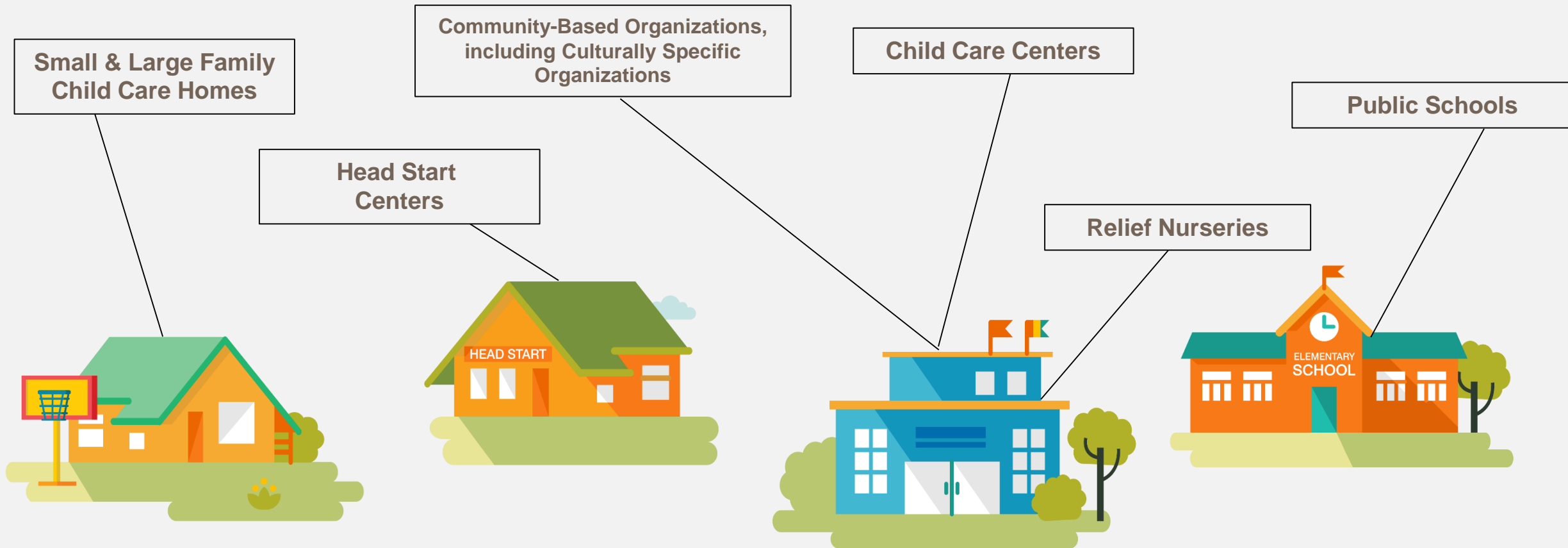
Preschool Promise Program Purpose

Established by HB 3380 (2015) to:

- Stabilize and increase the availability of high-quality preschool programming across Oregon
- Expand access to free, high-quality preschool programming in a variety of settings beyond Oregon Prenatal to Kindergarten, which is limited to primarily serving families at 100% FPL
- Ensure pathways and supports for the early educator workforce, including minimum and target salary requirements on par with kindergarten teachers, commensurate with experience
- Promote parent choice by ensuring families have access to programs that meet their needs and treat them as partners



Preschool Promise is a mixed-delivery model, recognizing that high-quality programming happens in a variety of settings to promote family choice.





Preschool Promise Services

- Serves children up to 200% FPL (\$60,000 for family of 4), foster families, and families in some rural communities regardless of income
- Bans suspension or expulsion of children in programming
- Provides a minimum of 900 instructional hours per program year
- Provides minimum salary guidelines for pay parity with kindergarten educators
- ELD grants directly with providers across the state, with some Hubs sub-granting as requested by providers.
 - ELD currently holds 233 agreements with Preschool Promise providers across ~340 program sites.
- Early Learning Hubs coordinate enrollment across Preschool Promise programs in their region.



Funding Considerations

Applicants must have a ready facility and be staffed appropriately to start services by the required date prior to their grant being executed.

Fixed costs that are for programming:

- Facility rent/mortgage, utilities, ground maintenance, licenses/regulatory costs, insurance, teachers, support/infrastructure personnel (front desk, payroll, HR, custodial, IT, food service).

Preschool Promise lead teacher and teacher assistant salaries must meet salary guidelines adopted by the Early Learning Council

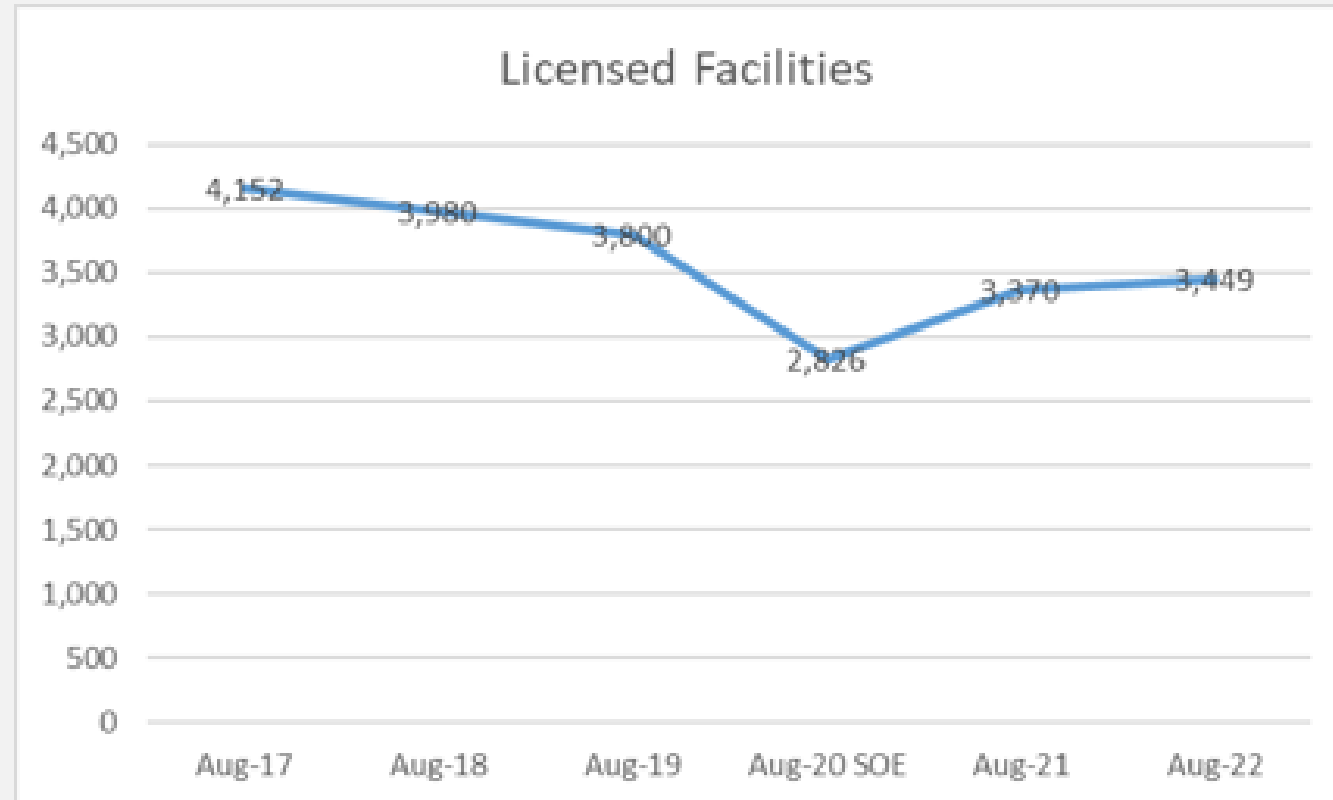
- Grantees must provide their Preschool Promise teaching staff with paid time off (sick, personal, vacation) during the Preschool Promise Program Year.
- For early learning programs, approximately 75% of the funding received or profit earned is needed for personnel.



Program Impacts



Child Care Availability: Six Year Trends



Data Source: OCC's Child Care Regulatory Information System (CCRIS)



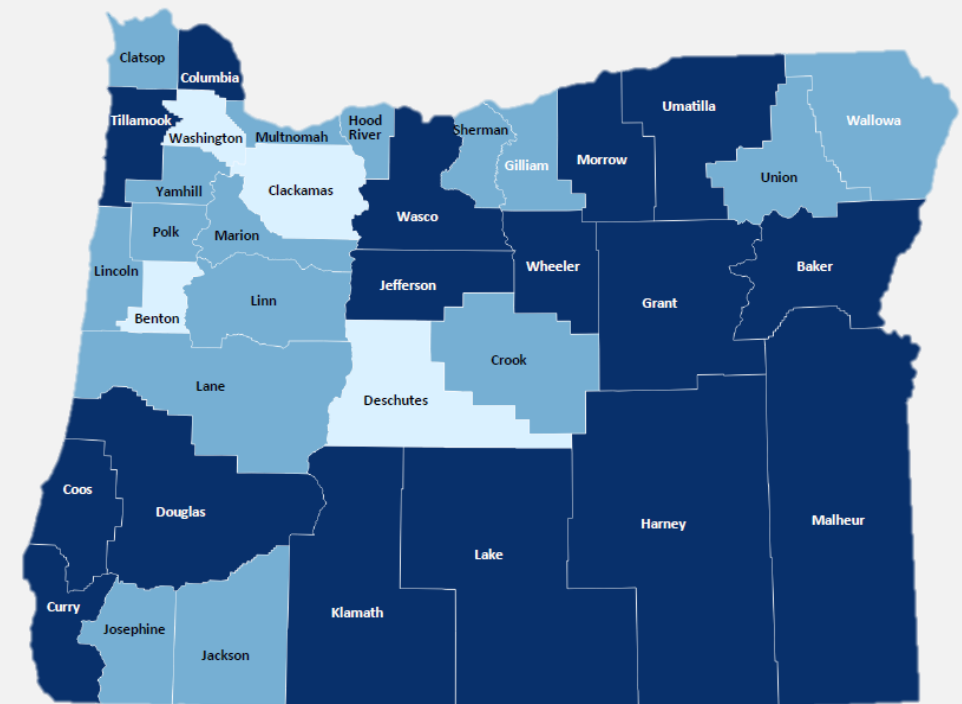
Stabilizing & Increasing Availability

Fewer child care deserts for preschoolers

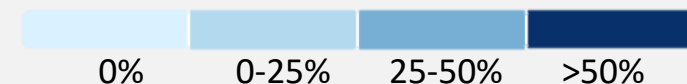
- ↓ 27 counties in 2018
- ↓ 25 counties in 2020
- **18 counties in 2022**

Of the 18 counties that are not preschool child care deserts, 15 would become deserts without publicly funded slots.

Percent of Regulated Child Care Slots that are Publicly Funded by Age Group



Percent of Publicly Funded Slots





Market Price of Care Reflects Operating Costs

2022 Oregon Child Care Market Price Study (March 2023)

- Rate of inflation from 2020-2022 was 13%
- After adjusting prices for inflation, the price of care in large and small home-based facilities outpaced inflation, while the price of center-based care generally kept up with inflation.
 - 29% increase for preschool programs in Small home-based facilities
 - 22% increase for preschool programs in Large home-based facilities
 - 16% increase for preschool programs in Centers



Thank you
