

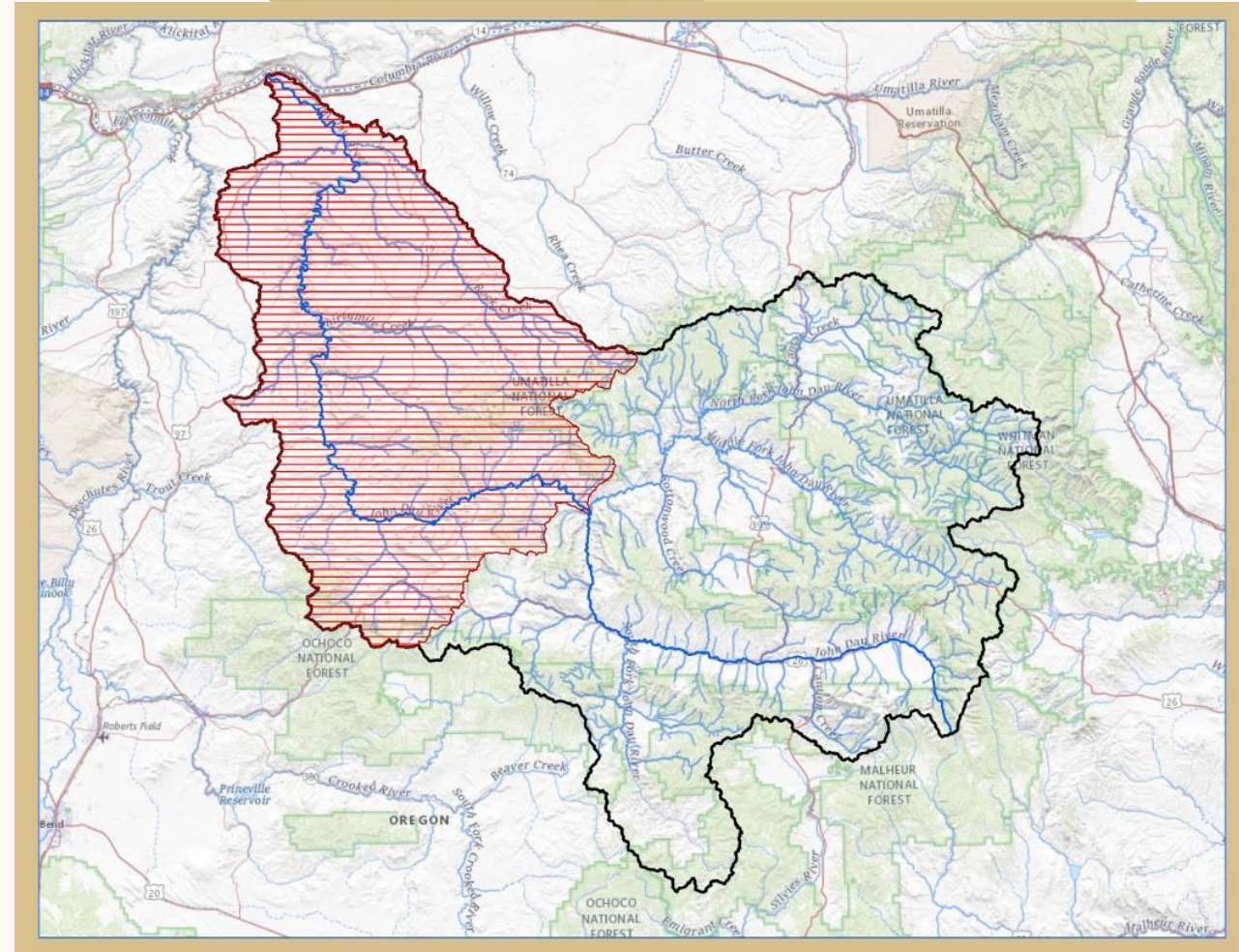
# **LOWER JOHN DAY PLACE- BASED PLANNING**

Debbi Bunch  
Mid-John Day Watershed Council

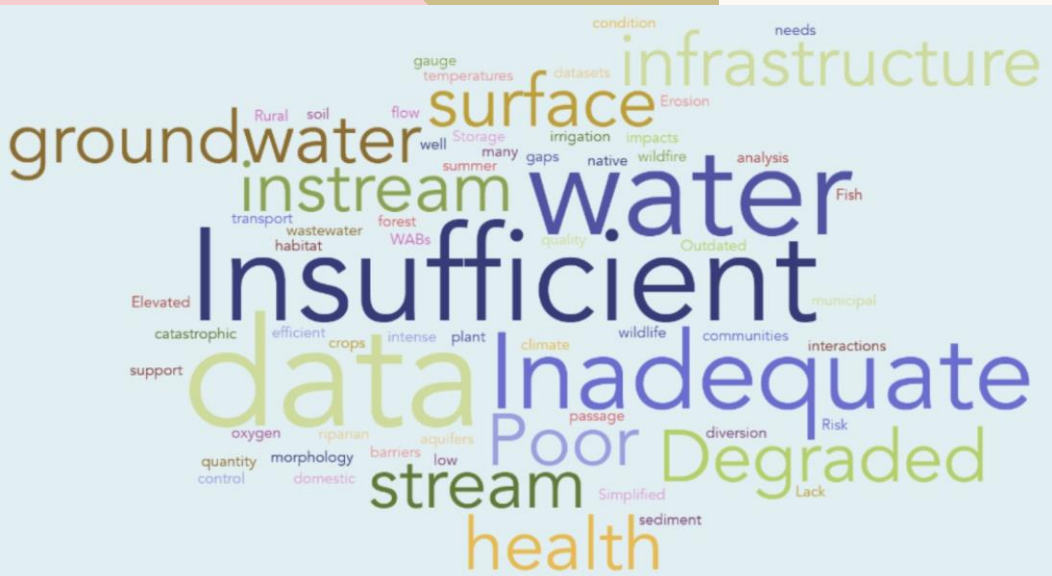


# PURPOSE

- Locally led planning effort
- A variety of stakeholders engaged
- Agriculture, natural resources, municipal, and recreation
- More demand than supply



# PROCESS



- Work started in 2016
- 15 organizations as core contributors
- Operations manual was key
- Guidance provided by OWRD for each step
- Some steps required a heavy technical lift
- Strategic solutions were identified and prioritized
- The plan was officially recognized in 2022
- Implementation of the workplan has already begun

# OUTCOMES

- Key findings have been published in a 2-pager and distributed to the local communities
- The full report is available on the Lower John Day Place-Based website
- Additional funding has been awarded for refining certain planning elements
- The group continues to meet
- Over \$250,000 in projects have already been completed.



# THANK YOU

Debbi Bunch

[debbi@midjohndaywatershed.org](mailto:debbi@midjohndaywatershed.org)

<https://www.midjohndaywatershed.org/>