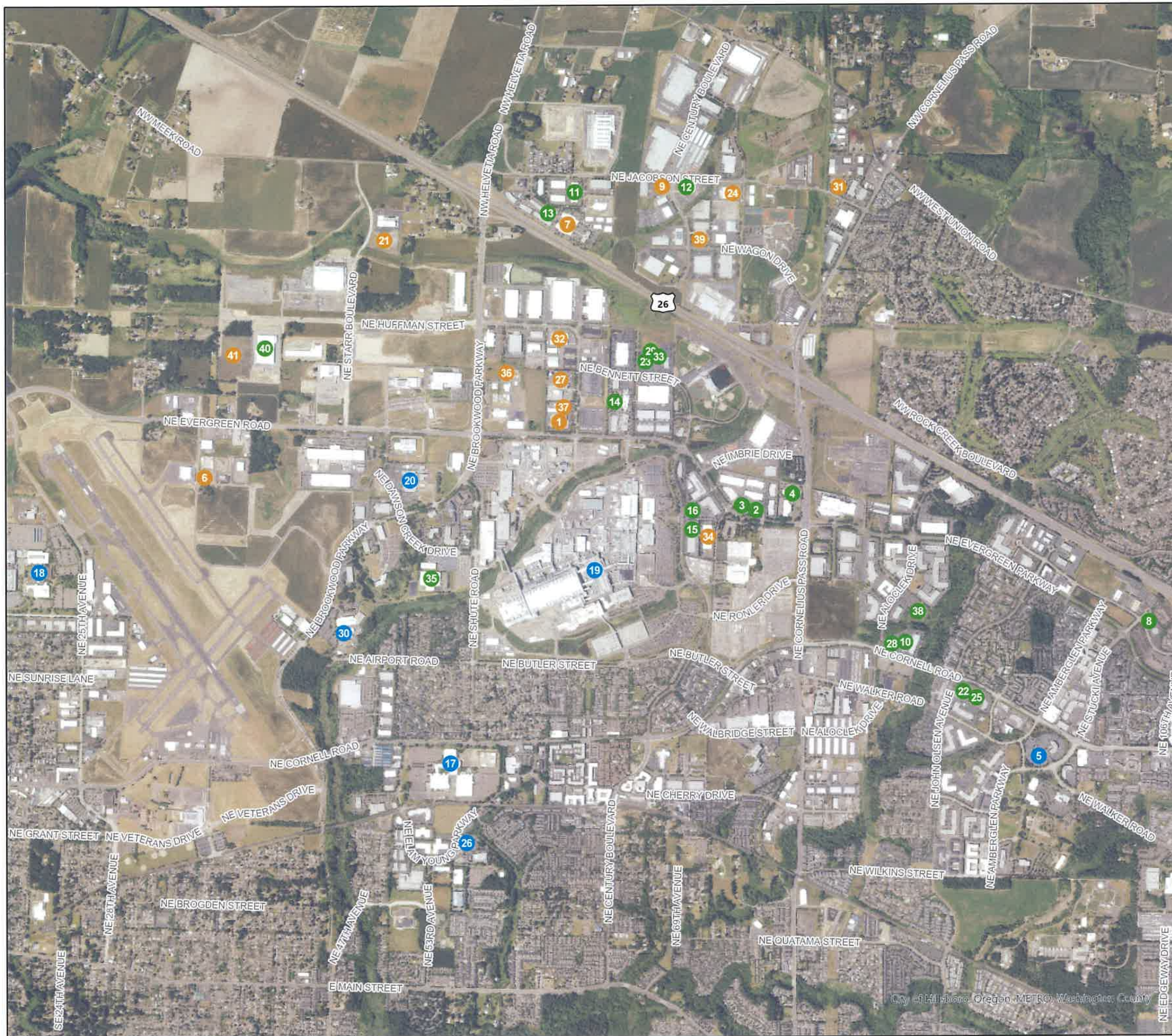


SEMICONDUCTOR INDUSTRY

Key Supply Chain Businesses



- | | |
|---|--|
| Sub-Industry | 19 INTEL - RONLER ACRES |
| DM Device Manufacturing | 20 JIREH SEMICONDUCTOR |
| ESS Equipment and Sub-Systems | 21 JSR MICRO |
| MS Materials and Services | 22 KLA TENCOR |
| Company | 23 KOKUSAI SEMICONDUCTOR EQUIPMENT |
| 1 AGC ELECTRONICS AMERICA | 24 KOMICO |
| 2 APPLIED MATERIALS | 25 LAM RESEARCH |
| 3 ASM AMERICA | 26 LATTICE SEMICONDUCTOR |
| 4 ASML US | 27 LINDE |
| 5 BESANG INC | 28 MURATA MACHINERY USA INC. |
| 6 CLEAN TECH INC. | 29 NIKON PRECISION |
| 7 CMC MATERIALS | 30 QORVO |
| 8 CYMER | 31 QUANTUM CLEAN |
| 9 DAIFUKU CLEANROOM AUTOMATION AMERICA | 32 RINCHEM |
| 10 DISCO HI-TEC AMERICA, INC. | 33 SCREEN SPE |
| 11 EBARA TECHNOLOGIES | 34 SUMITOMO ELECTRIC SEMICONDUCTOR MATERIALS |
| 12 EDWARDS VACUUM | 35 THERMO FISHER SCIENTIFIC |
| 13 EVATEC | 36 TOK AMERICA |
| 14 HITACHI HIGH-TECH AMERICA | 37 TOKAI CARBON USA |
| 15 HITACHI HIGH-TECH AMERICA | 38 TOKYO ELECTRON AMERICA |
| 16 HITACHI HIGH-TECH AMERICA | 39 TOSOH QUARTZ |
| 17 INTEL - HAWTHORN FARM | 40 HITACHI HIGH-TECH AMERICA (Under Construction) |
| 18 INTEL - JONES FARM | 41 GXO (Under Construction) |

