



Presentation to the 2023 House Early Childhood & Human  
Services Committee, 2023 Legislative Session

# Office of Developmental Disabilities Services (ODDS)

---

Anna Lansky, Interim Director, ODDS

Feb. 8, 2023

# Outline

- I. Who we are and why our work matters
- II. Who we serve
- III. Funding sources and authorities
- IV. How we serve
- V. Services we offer
- VI. Questions

# Who we are

---

- Oregon's system of supports for people with intellectual and developmental disabilities (I/DD) provides services across the lifespan.
- Office of Developmental Disabilities Services (ODDS) oversees Oregon's I/DD system.
- The system is built on critical partnerships between the state and local governments, Tribal partners, self-advocates and families, nonprofits, provider agencies and other partners.
- We collaborate to provide services, supports and advocacy that empower people with I/DD to thrive as valued community members.



# Our mission and vision

---

- **Mission:** ODDS, partners and the developmental disabilities community come together to provide services, supports and advocacy to empower Oregonians with intellectual and developmental disabilities to live full lives in their communities.
- **Vision:** People and families access quality supports that are simple to use and responsive to their strengths, needs and choices, while they live and thrive as valued members of their community.





# Why our work matters

---

- All individuals, regardless of ability, deserve to live healthy, safe lives that are free from abuse and allow them to achieve their highest potential.
- Children with I/DD grow up with the same expectations as any other child — to become contributing members of their communities.
- Community employment is a goal for everyone.
- An individual's background should not define their outcomes. We advocate for and work to build inclusive communities and equitable services by recognizing and then eliminating disparities.



# Equity North Star

---

- Equity North Star guides us to our vision of an agency free of racism, discrimination and bias.
  - Inclusivity
  - Well-Being
  - Service
  - Equity
- Equity is foundational to our role as a human services agency and a cornerstone of our strategic plan.
- We are committed to the hard work of systems change.
- We honor intersectionality and the diversity of Oregon's disability community.



# ODDS history

- Oregon has a community-based system and strong foundation of home and community-based services that allowed for successful deinstitutionalization.
- Medicaid funding authorities ensure services for all eligible individuals according to their level of need.
- We are an Employment First state that promotes competitive integrated employment for people with I/DD.
- Through Cover all People (Healthier Oregon), we are working towards inclusion of all individuals regardless of their status in the USA.
- ODDS advocates for the full inclusion of people with I/DD throughout all the state's supports and services.



# Who we serve

---

We serve nearly **33,000 people** in Oregon who experience intellectual and developmental disabilities (I/DD).

- **10,239 children**
- **22,755 adults**

**In order to be eligible for ODDS services, a person must:**

- Have an **intellectual disability** as determined by IQ with onset before age 18 and limited ability to handle day-to-day activities; or,
- Experience a **developmental disability** with onset before age 22 with limited ability to handle day-to-day activities; and,
- Meet financial eligibility for Medicaid services.





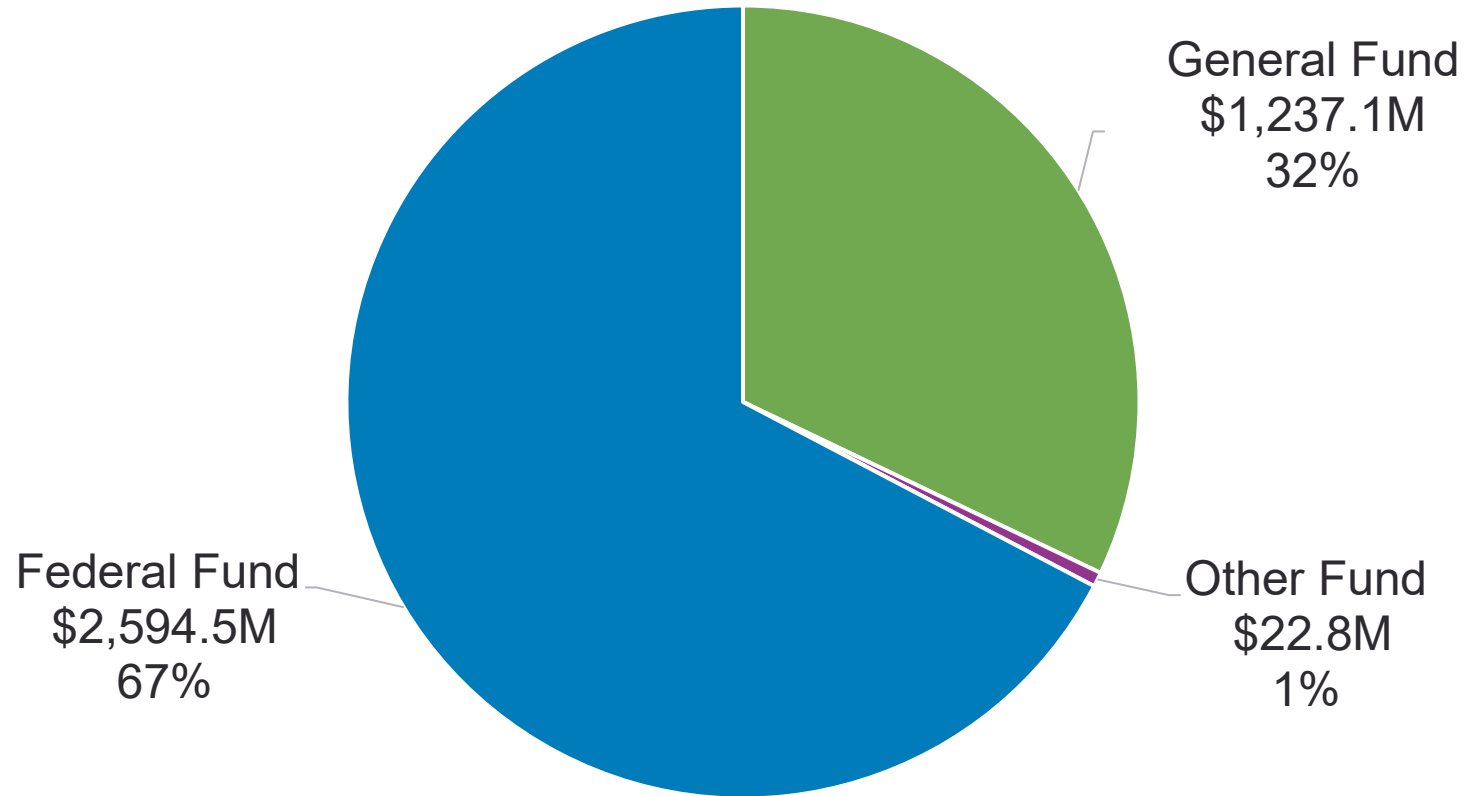
# Funding and regulatory structure

- Funding for I/DD services in Oregon primarily comes from Medicaid.
- Medicaid is a partnership between federal and state governments where state provides matching funds to federal dollars.
- Oregon uses Community First Choice Option (K-Plan) 1915k authority for most services.
- Oregon also has five 1915c Waivers.
- Federal Medicaid regulations for home- and community-based services for these authorities impact state program design and operations.



# Funding sources (2021–23 LAB) — \$3,854,399,491

---



# Our current Medicaid authorities

---

Adult's  
waiver

Children's  
waiver

Medically  
Involved  
Model waiver

Medically  
Fragile Model  
waiver

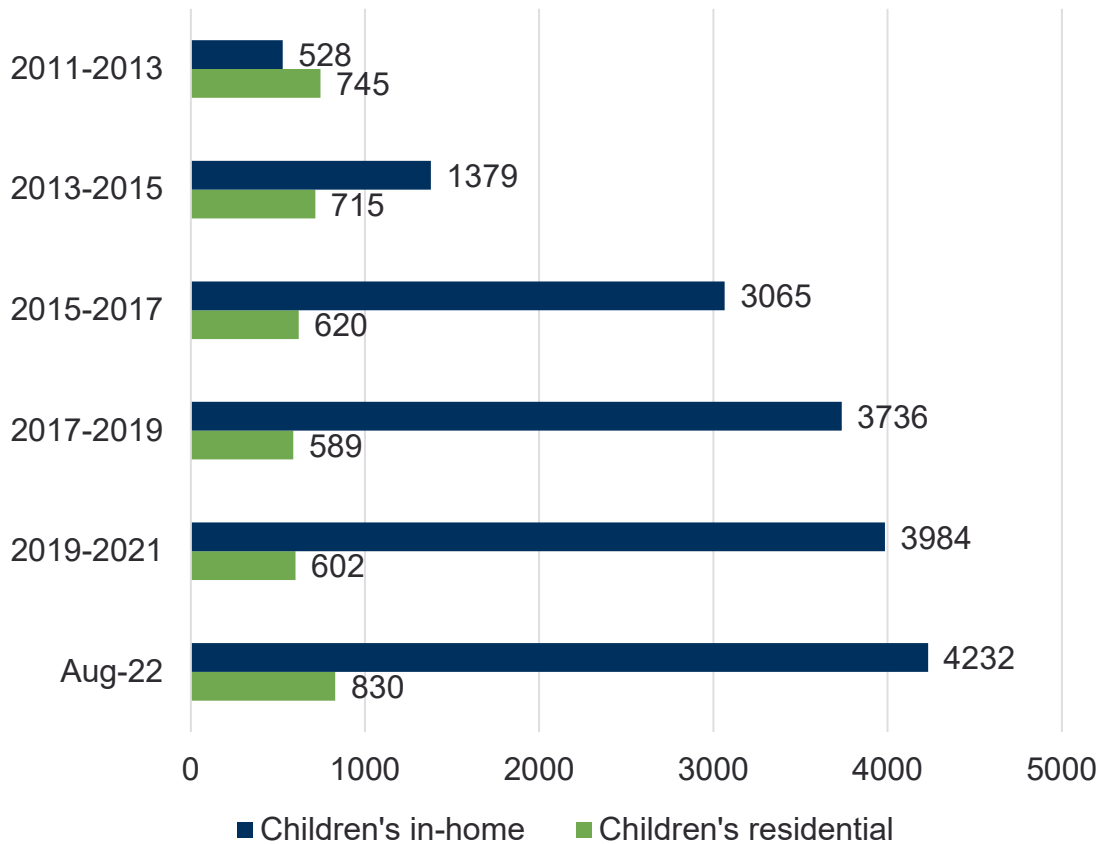
Behavioral  
Model waiver

Community First Choice Option or K Plan

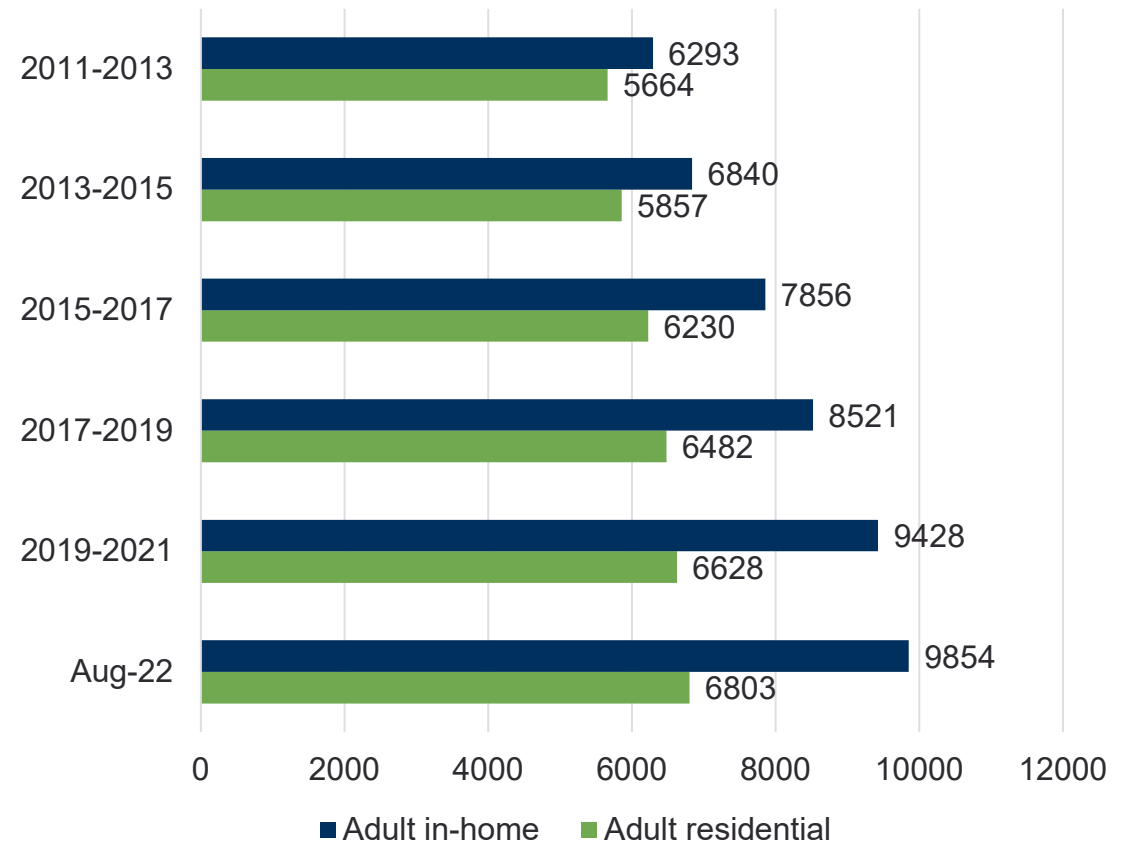
Other State Plan services

# Enrollment changes

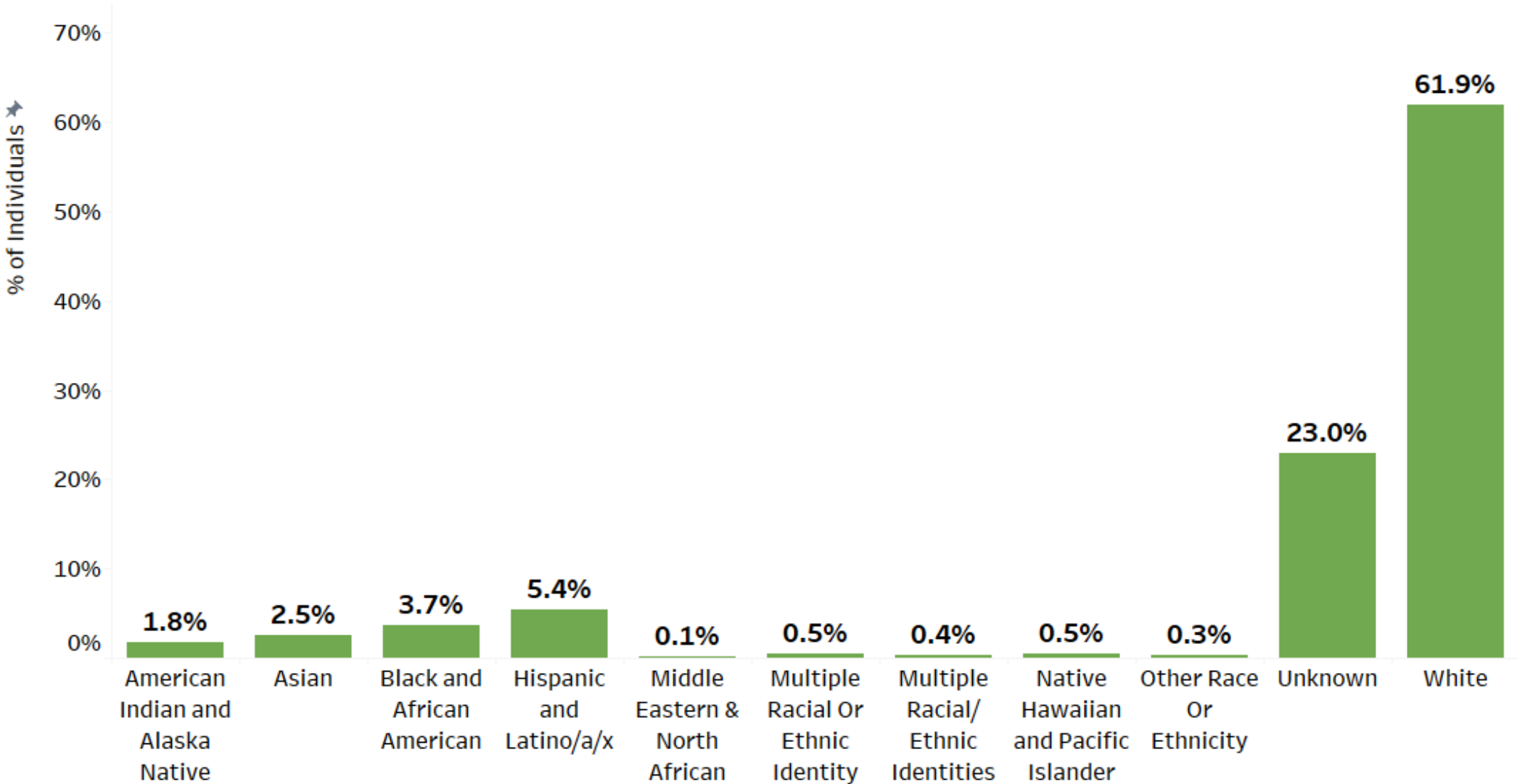
## Children's services enrollment



## Adult services enrollment



# Individuals enrolled in I/DD program by REALD categories





# How we serve: State responsibilities

---

## ODDS

- Oversee the delivery of I/DD services
- Work with partners to develop and follow strategic plan
- Provide funding
- Develop policies
- Provide general oversight
- Certify and license providers

## CDDP state functions

- Carry out certain state functions on behalf of the state:
  - I/DD eligibility process
  - Abuse investigations
  - Foster home licensure and certification reviews

# How we serve: Case management entities (CMEs)

---

## Community Developmental Disabilities Programs (CDDPs)

- 25 CDDPs cover every county in Oregon.
- Services coordinators provide case management services to adults living in home and supported living settings, residential facilities and adult foster homes.
- Services coordinators provide case management services to children living in home settings and I/DD foster homes.

## Brokerages

- 14 brokerages statewide.
- Personal agents provide case management services to adults living in their own home or their family home.

# How we serve: Role of case managers

---

**Service coordinators (CDDPs) and personal agents (brokerages) assist individuals in accessing needed employment, social, educational and other services.**

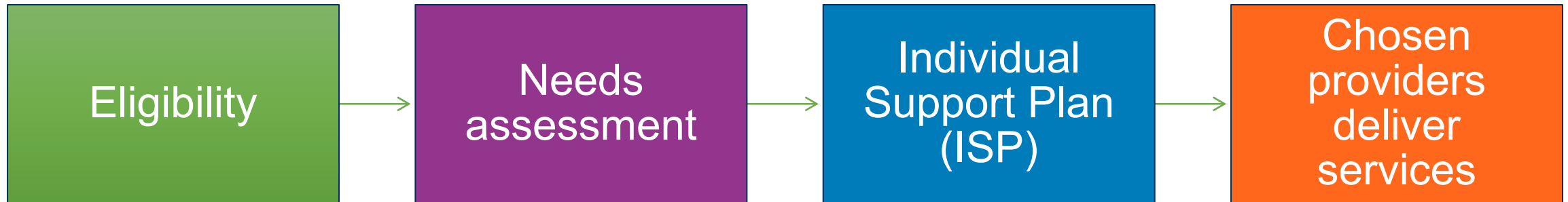
## **Services include**

- Assessment of individual needs and preferences
- Development of the individual support plan
- Service referrals
- Monitoring
- Follow-up



# Path to receiving services

---



- ISP helps each person with I/DD live the good life that they want.
- Each person's ISP is different because each person is unique.

# Individualized Support Plans

---

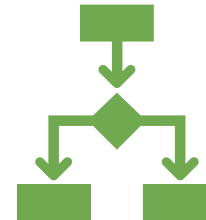
Through an Individualized Support Plan (ISP), a services coordinator or personal agent:



Helps a person identify their desired outcomes/goals.



Assists in addressing assessed needs.



Helps choose services to support their goals and needs.



Follows up with the person to make sure the ISP is working for them.



# In-home services

**In-home services empower and support children and adults who live in their own or family home. By far, most people eligible for I/DD services receive in-home services.**

## **Hourly attendant care**

- Support at home and in the community
- Activities of daily living like hygiene or mobility support
- instrumental activities of daily living like cooking and shopping

## **Other services**

- Transportation
- Behavior supports
- Technology
- Home modifications



# Residential services

---

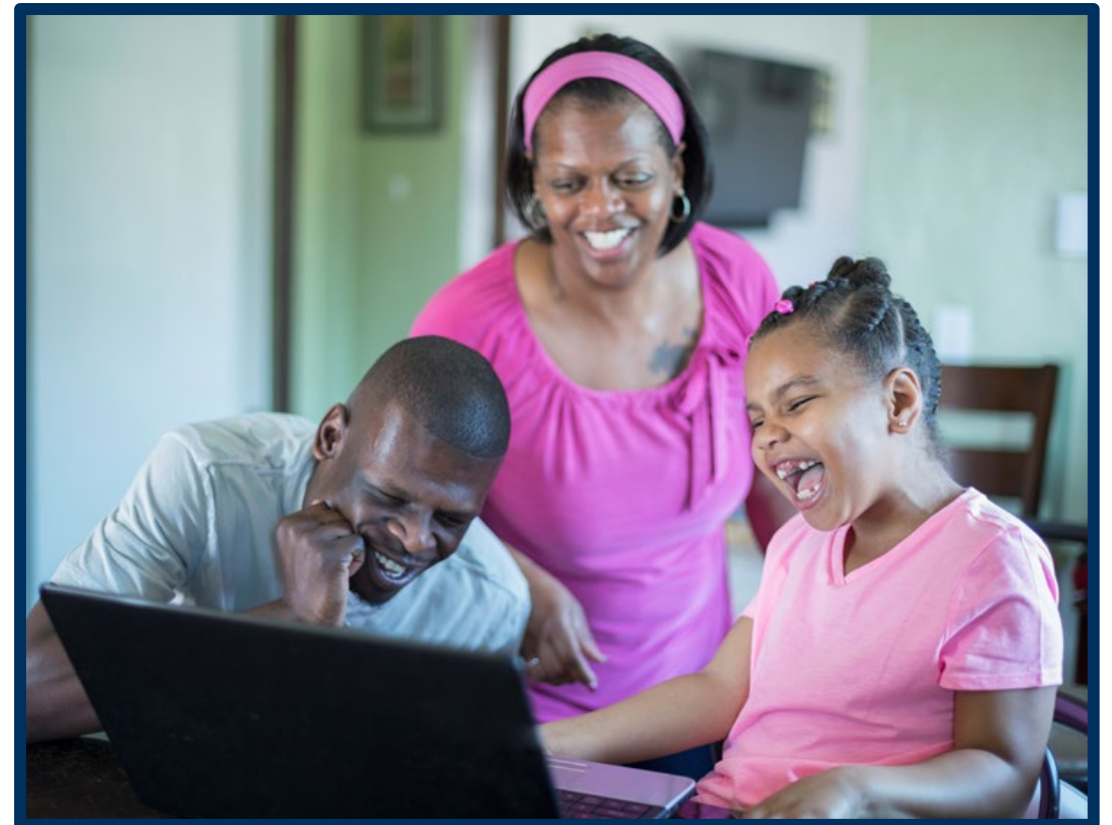
**Residential services provide a 24-hour support setting and home for children and adults outside of their own or family homes.**

## **Examples of services**

- Develop skills to cook, shop, be safe
- Prepare for work, daily activities
- Interact with peers
- Behavior support
- Help accessing mental health and nursing services
- Day support

## **Provider types**

- Foster care
- Group homes
- Supported living
- Host homes
- Stabilization and Crisis Unit (SACU)



# Employment services

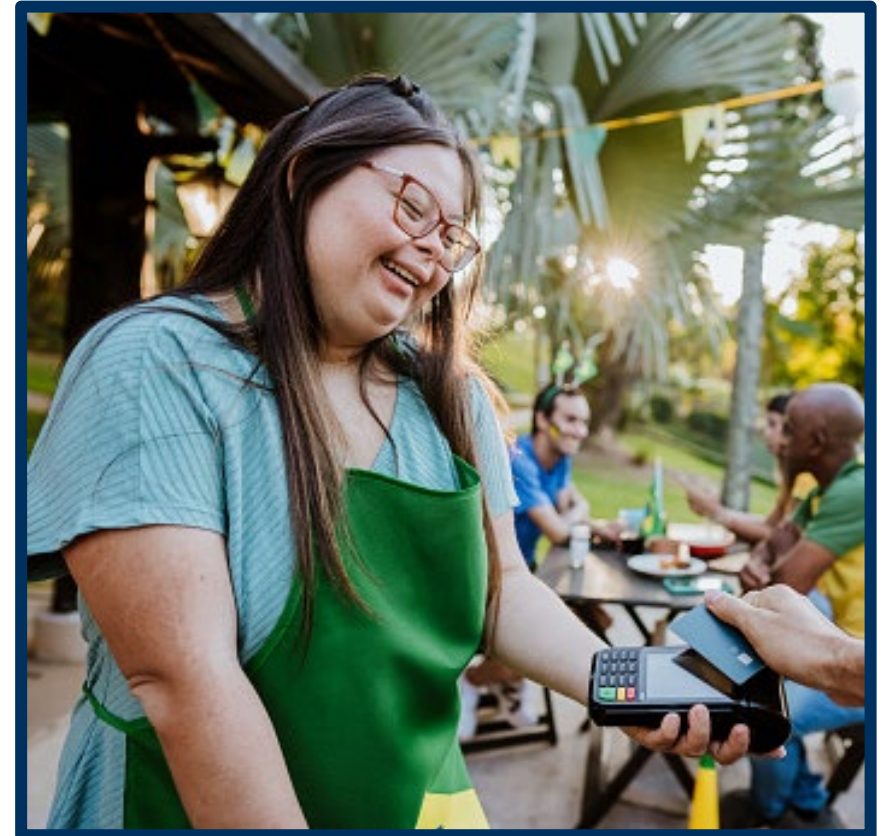
---

ODDS partners with ODHS Vocational Rehabilitation and the Oregon Department of Education to offer **supported employment services to help people find integrated jobs in the community.**

Our Employment First policy says **fully integrated jobs in the community are the priority** in planning employment services for working-age adults and youth who experience I/DD.

## Some examples of services

- Job development
- Job coaching
- Discovery
- Small group supported services
- Employment Path Community
- Benefits counseling
- Career Development Path
- Core competencies and training
- Competitive integrated employment



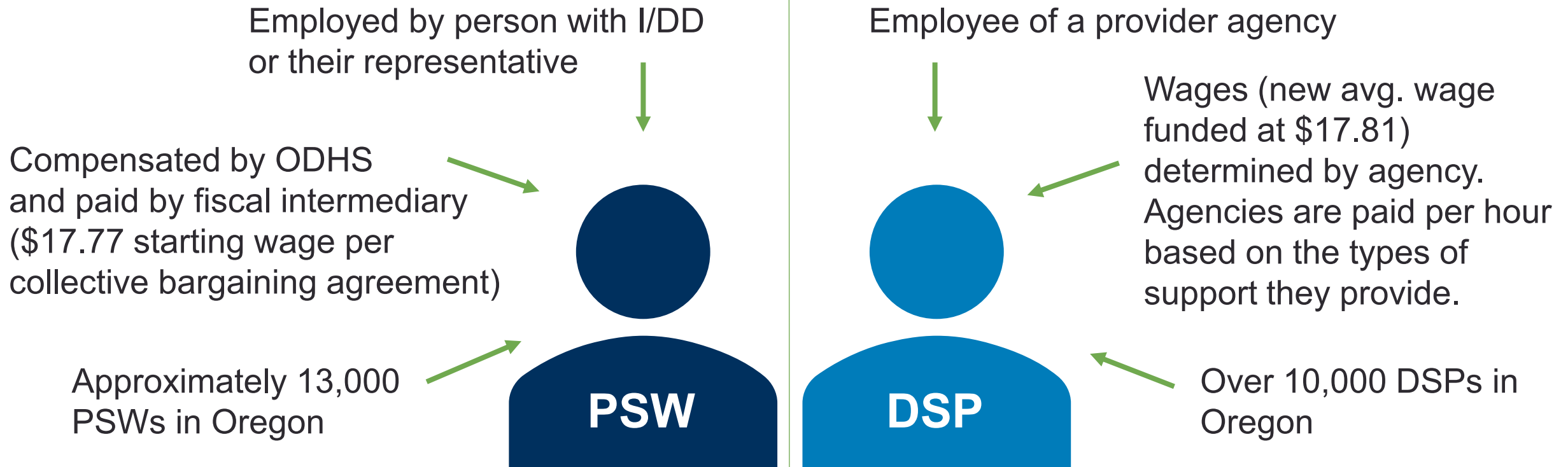
# Ancillary services

- Behavior consultation
- Home modifications
- Assistive devices and technology
- Direct nursing services for adults
- Community Transportation
- Medical supplies



# Who provides attendant care services

Both personal support workers (PSWs) and direct support professionals (DSPs) support individuals in their homes and in their communities.





# Service settings

<b>Adults</b>	<b>22,834</b>
Brokerage enrollment	7,524
CDDP enrollment	15,310
<b>Services enrollment</b>	
In-home support	9,854
24-hour residential	3,211
Adult Foster care	2,828
Supported living	764
Employment and day support	4,708
Stabilization and Crisis Unit	90

<b>Children</b>	<b>10,239</b>
CDDP enrollment	9,826
Case management (CM) only	4,384
CM with funded services	5,855
In-home support	4,232
Residential care	124
Host homes	6
Foster care	296
SACU	15

<b>CIIS</b>	<b>375</b>
CIIS: Intensive Behavior	98
CIIS: Medically Involved	177
CIIS: Medically Fragile	100

# Closing remarks

---

- **All individuals of all abilities** deserve to live safe, healthy lives that are free from abuse and allow them to achieve their highest potential.
- Oregon's I/DD system is built on critical partnerships between the state, local governments, nonprofits, provider agencies, self-advocates and families to help persons with I/DD to live successfully in their communities.
- We continue to innovate, building a strong foundation of supports and laying the avenues to equity and community inclusion.





Questions?

---