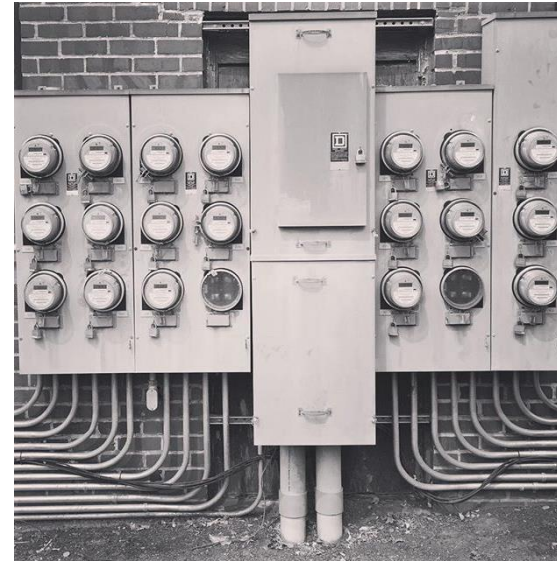


Oregon Department of **ENERGY**

Resilience Programs
House Interim
Committee on Climate,
Energy, and the
Environment

Hannah Satein
Christy Splitt
December 10, 2024



SETTING THE STAGE

Community Energy Resilience

The ability of **a specific community** to maintain the availability of energy needed to support the provision of **energy-dependent critical public services** to the community following nonroutine disruptions of severe impact or duration to the **state's broader energy systems**.

HB 2021, 2021 Regular Session

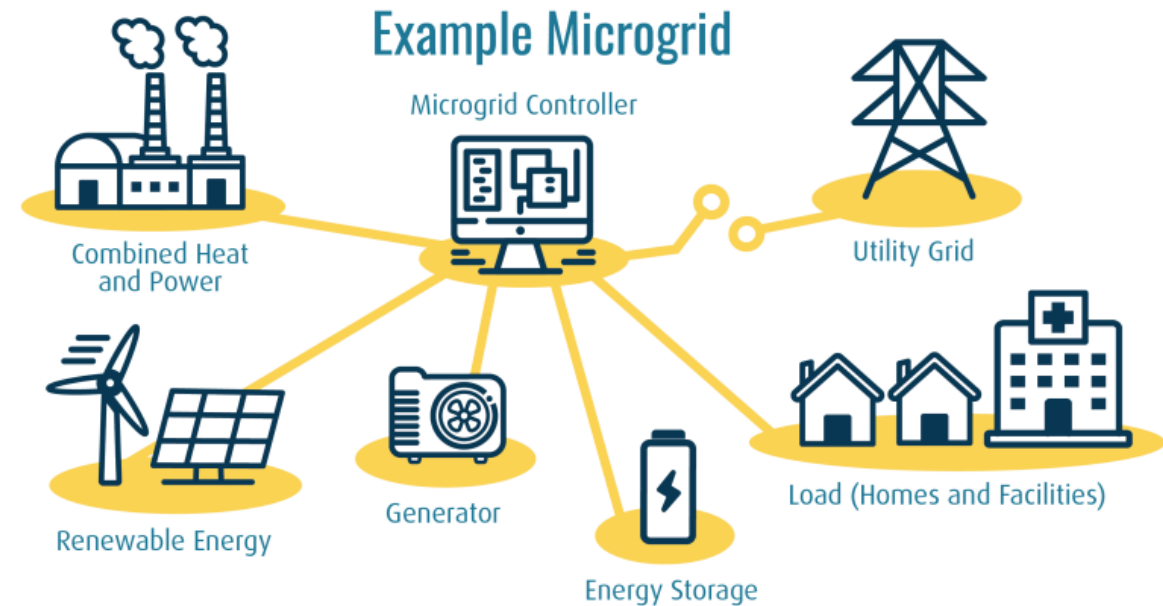


Image courtesy of NASEO

COUNTY ENERGY RESILIENCE PROGRAM

Program: Up to \$50,000 per Oregon county to develop energy resilience plan

Key Dates:

- Application window: May 22, 2024 - February 28, 2025
- Program deadline: August 1, 2025

Participation:

- 2 counties enrolled, ~15 strong interest



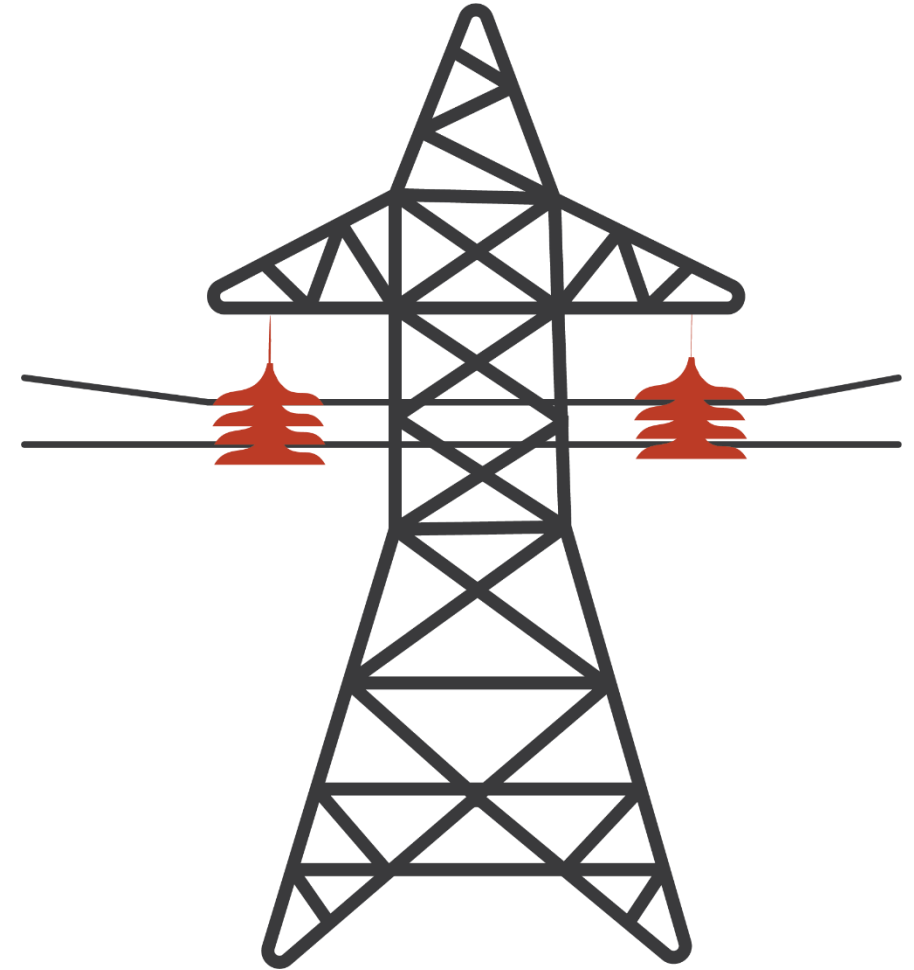
PLAN REQUIREMENTS

Provided in HB 3630

Map:

- Current energy infrastructure
- Natural hazard risks
- Communities that experience social vulnerability

Engage with environmental justice communities to identify communities that experience social vulnerabilities



PLAN REQUIREMENTS

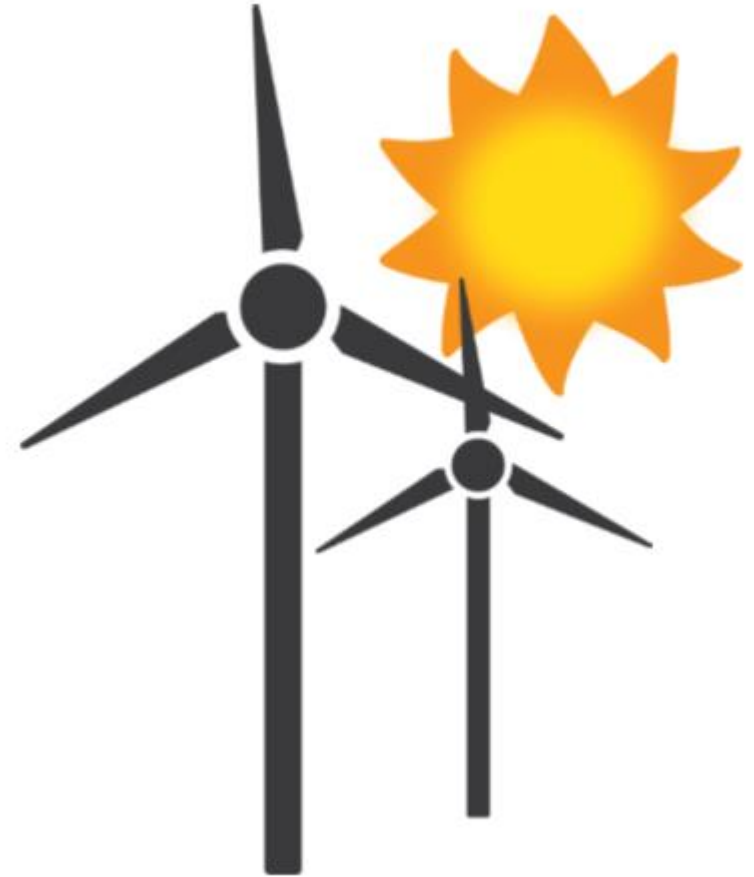
Provided in HB 3630

Identify needs to strengthen resilience:

- Community resilience centers
- Alternate energy generation and storage for critical public service facilities

Identify steps for implementation

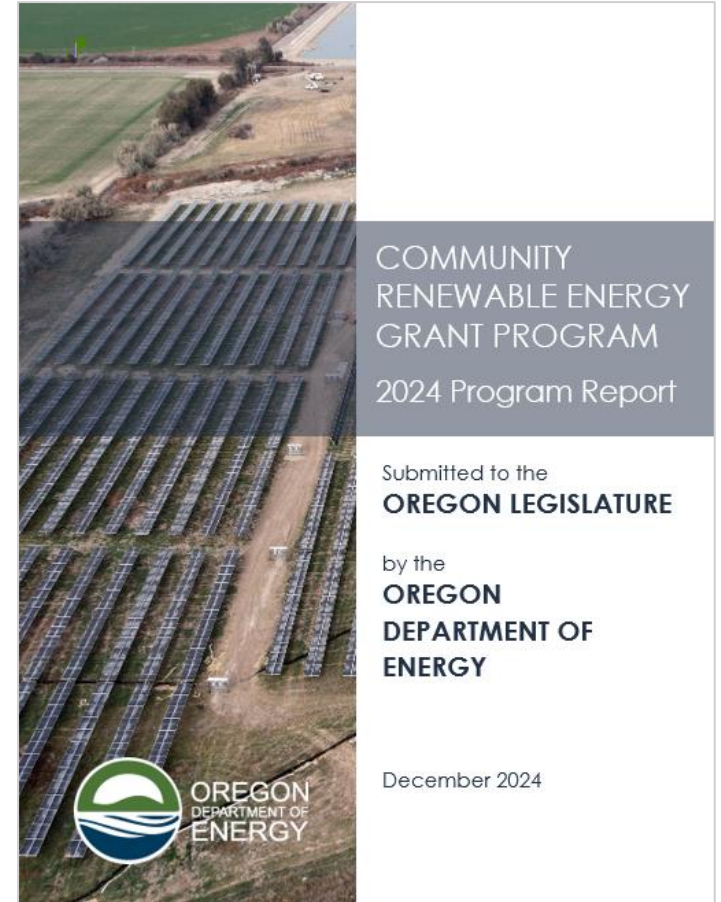
County adoption and Natural Hazard Mitigation Plans incorporation



COMMUNITY RENEWABLE ENERGY GRANT PROGRAM

- \$70 million invested in the program since 2021
- More than 195 eligible applications
- Awarded 44 construction grants and 50 planning grants in 28 of 36 counties so far
- “Sister program” to county planning grants

... and what's next



Click image to open report

OTHER ENERGY RESILIENCE WORK AT ODOE

Maintaining a resilient energy system is in our agency's mission

- Federal [Grid Resilience Program](#)
 - Supports projects that help keep the lights on
 - Utilities and state match federal contribution
- [Energy Security Plan](#)
- [Emergency response role: fuel](#)
- Providing [helpful information and data related to energy resilience and community energy resilience](#)





OREGON
DEPARTMENT OF
ENERGY

QUESTIONS?

Contact:

Christy Splitt, Government Relations Coordinator
christy.splitt@energy.oregon.gov