



Presentation to the House Interim Committee on Emergency Management, General Government and Veterans

Winter weather response and recovery

Ed Flick, Director, Oregon Department of Human Services' Office of Resilience and Emergency Management

December 10, 2024

January 2024 winter storm response and recovery

60 requests for assistance, active in over 92 efforts across 10 counties. Examples of OREM response and recovery include:

4,615 meals and
1,600 food boxes

161 warming
centers registered
with 211info
statewide

9 OREM climate
trailers deployed

2 community
resource centers in
Springfield and
Eugene

Outreach to 379
homes

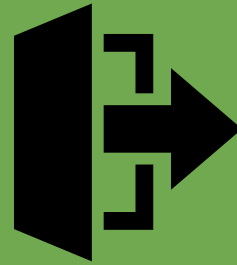
85 completed
recovery survey; 43
referrals to case
management



OREM approach to all emergencies



Keep people safe
in their homes



If people must
leave, give them
options



Support people
whose homes
are damaged

Keeping people safe at home

- Blue sky planning
- Relationships
- ODHS continuity of operations
- Supplies, equipment and data
- Training



Building options for evacuees

- Support to local warming center operations
- Service integration with 211info
- Active checking on isolated people
- Evacuation assistance via ODHS programs, transportation providers and local emergency operations center
- Medical respite shelter
- Resilience hubs and networks



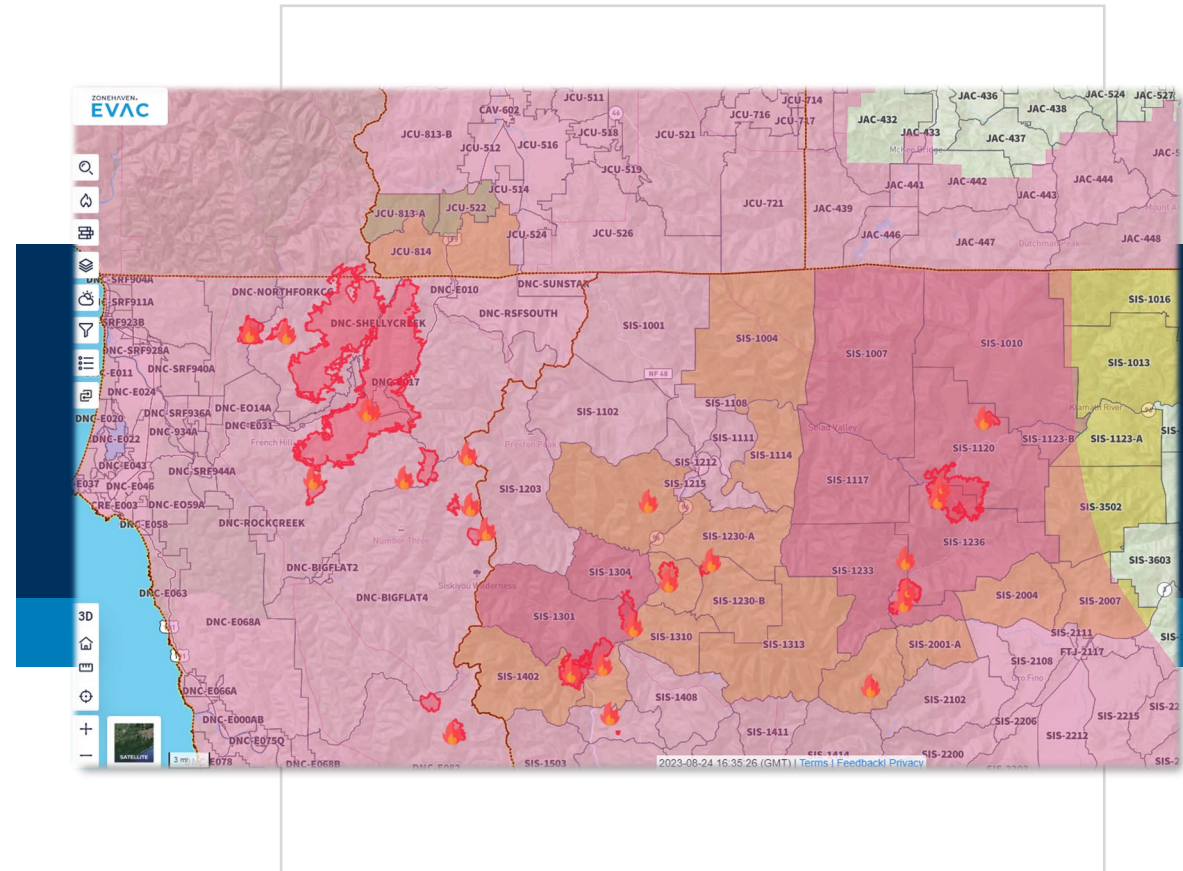
When homes are damaged

- Impact assessment
- Assist local jurisdictions to establish and operate multi agency resource centers
- Assist with debris removal, temporary repairs and emergency assistance
- Support for ODHS clients
- Coordinate recovery through OREM Social Service Recovery Coordinators



New for winter 2024/25: Project EVAC

- Available to all 36 counties and Nine Tribes
- Software to help emergency managers with evacuation and reentry
- Emergency deployed to counties impacted by wildfire this summer
- Current implementation by county:
 - 5 complete, 13 in progress, 2 ready to start, 1 info requested, 15 not started



Looking forward

- OREM available to coordinate shelter support, but not shelter operation
- We know there aren't enough options/resources
- Some people don't want to go to a congregate shelter
- People want local resources
- We did a lot for communities in 2020- now we build capacity within communities
- Next phase: award all grants and build resilience networks





Questions?
