

Overview: Oregon's Critical Energy Infrastructure Hub



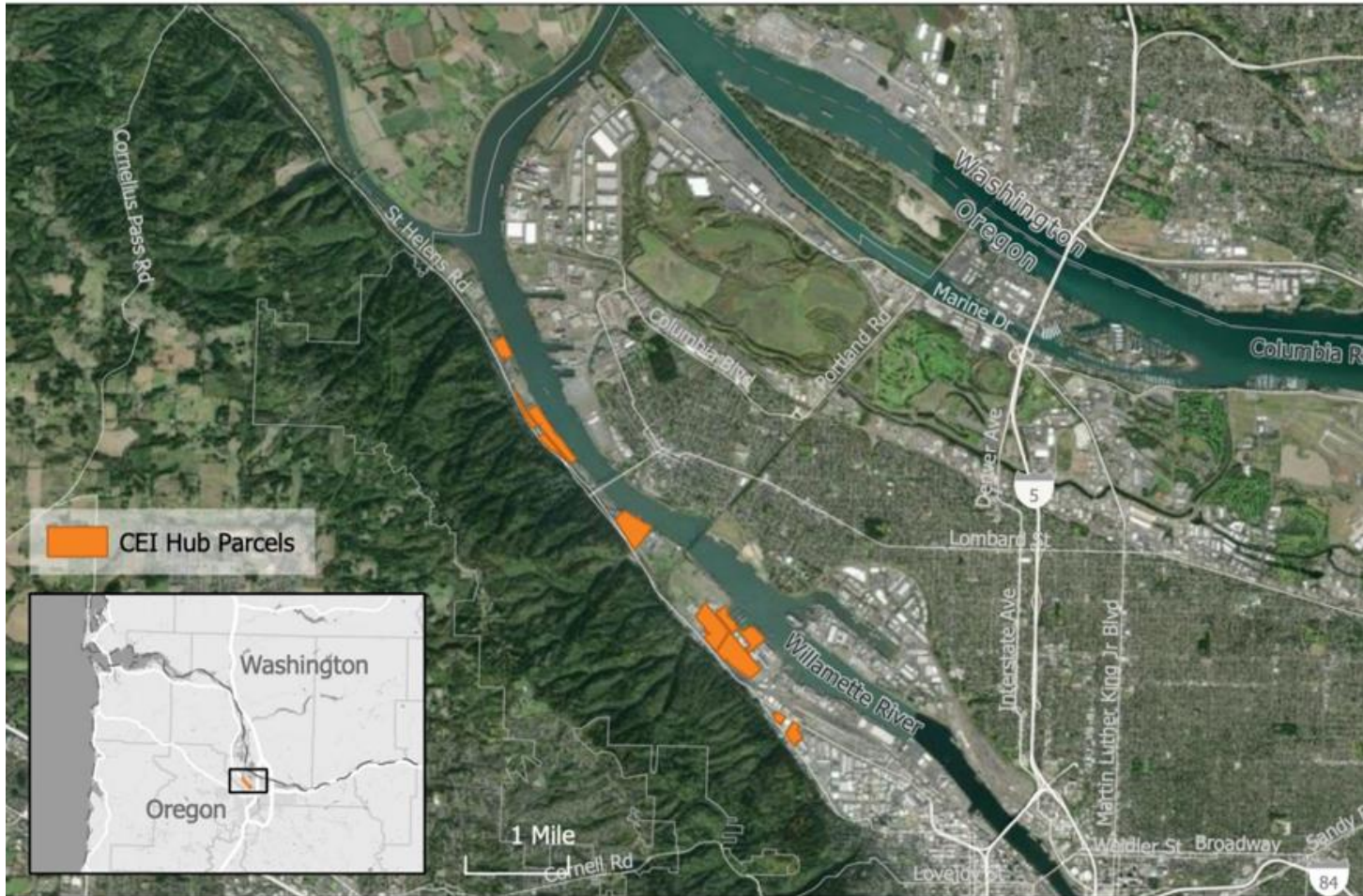
Jonna Papaefthimiou
Oregon State Resilience Officer
Jonna.papaefthimiou@oregon.gov

CEI Hub Function

- Oregon has no refineries; all gas, diesel, and jet fuel is imported
- More than 90% of Oregon's liquid fuel passes through Linnton fuel tanks:
 - Arrives via Olympic pipeline (70%) and barge (30%)
 - Stored in tanks then delivered by truck, barge, smaller pipeline



CEI Hub geography



- 17 facilities (tank farms)
- 3 pipelines
- 537 tanks
- 350 million gallons of petroleum products
- Primary access on Highway 30



CEI Hub Policy Conversations

- Linnton has been an industry hub since WWI
- Tanks of various ages and designs, most predating seismic standards
- Liquifiable soils, adjacent wildfire risk, limited egress contribute to risk
- Numerous studies have explored earthquake scenarios
- First seismic safety rules go into effect June 2024

CEI Hub Studies and Legislation

