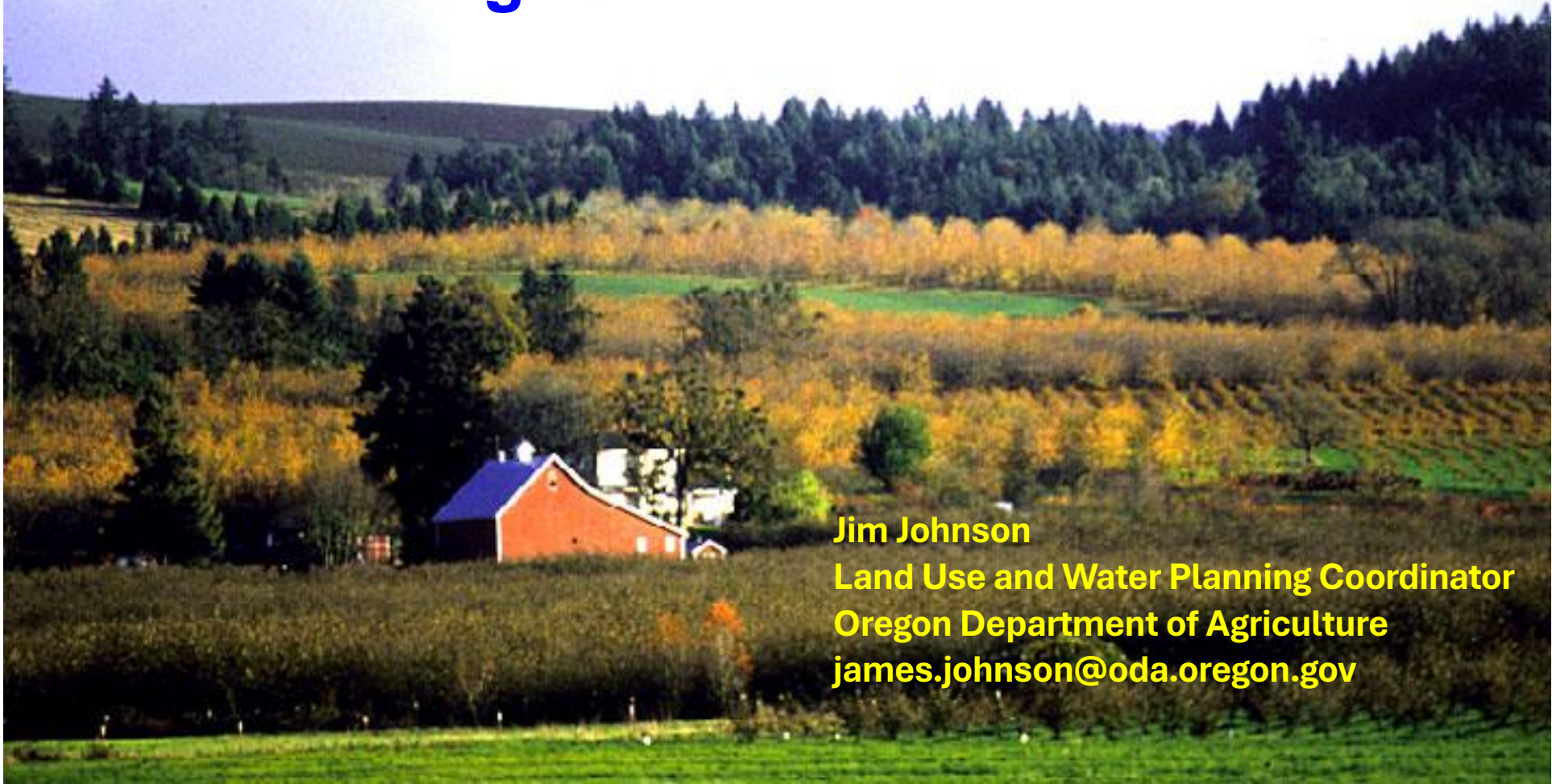


Farmland in Oregon

A Look at the Numbers

From the USDA 2022 Census of Agriculture



Jim Johnson
Land Use and Water Planning Coordinator
Oregon Department of Agriculture
james.johnson@oda.oregon.gov

Considerations

- The Census should be considered in context with other elements of the census.
- The Census does not track how/where land was converted.
- The Census considers actual land use, not land use designations.
- Also consider other reports such as:
 - *Oregon Farm & Forest Report*, DLCDD
 - *National Resource Inventory*, (NRI) USDA NRCS
 - *Forests, Farms and People* series, ODFW, USDA
 - *Farms Under Threat*, American Farmland Trust

Farms and Land in Farms

Since 1974, the Census of Agriculture has defined a farm as

“any place from which \$1,000 or more of agricultural products were produced and sold, or normally would have been sold, during the census year.”

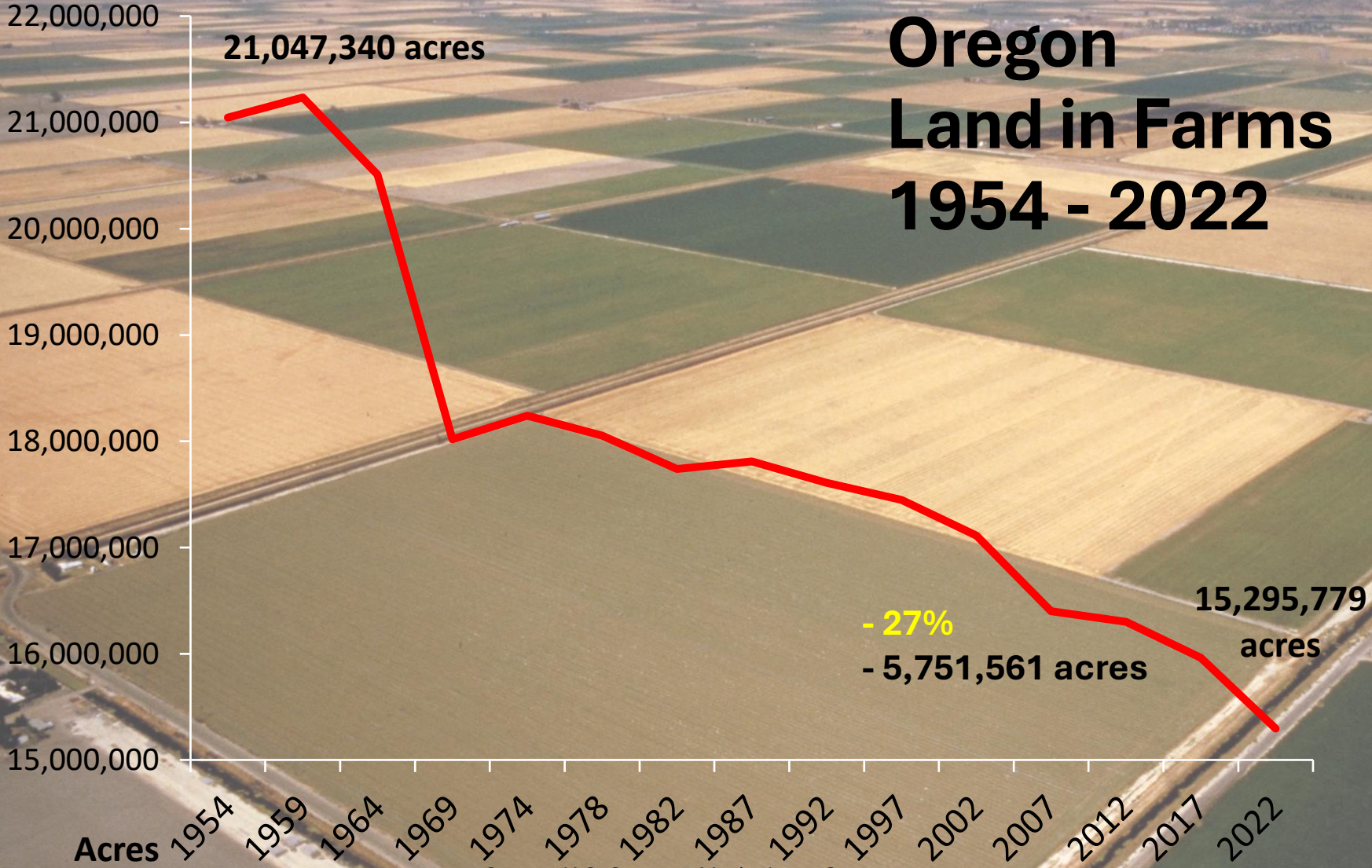
Oregon Agricultural Land Base Land in Farms: 2022 Census

- 15,295,799 acres
- 35,547 total farms

Total land area of Oregon = 63.018 million acres

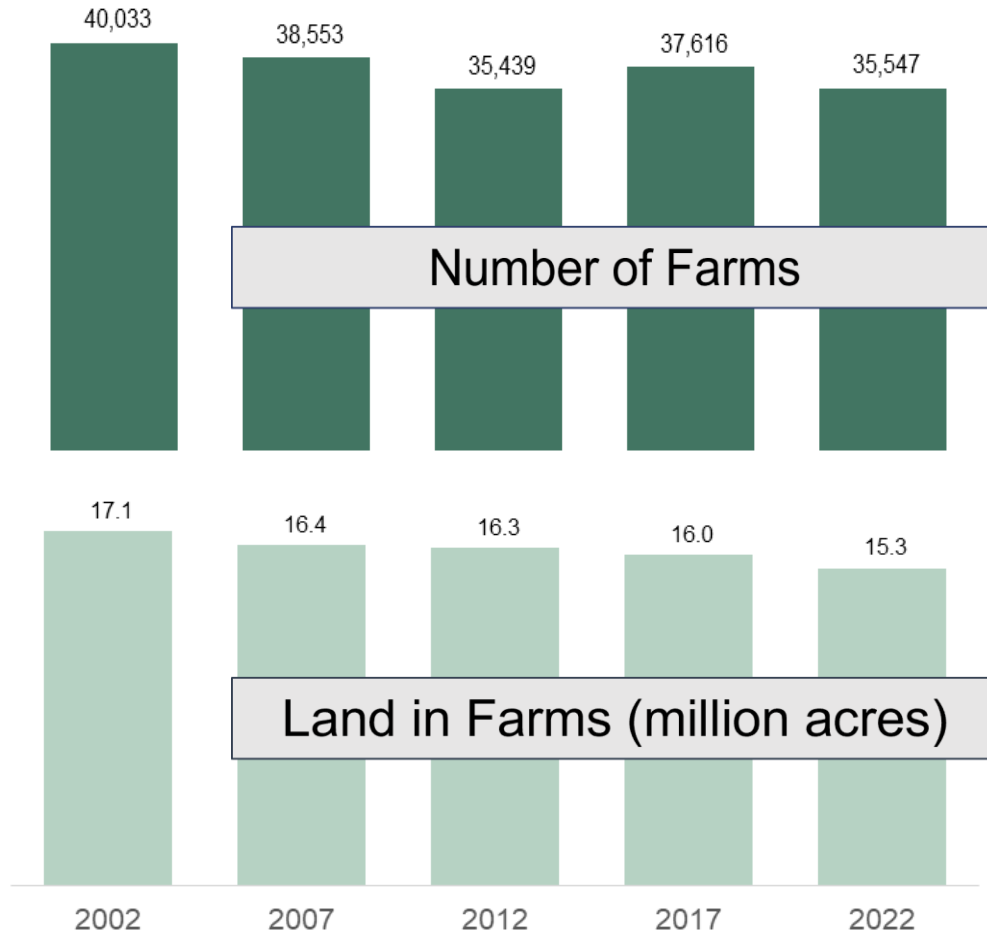


Oregon Land in Farms 1954 - 2022



Source: U.S. Census of Agriculture, Oregon

Number of Farms and Land in Farms, 2002 - 2022



Number of Farms		
2017	2022	% Change
37,616	35,547	-5.5

Land in farms		
2017	2022	% Change
16	15.3	-4.2

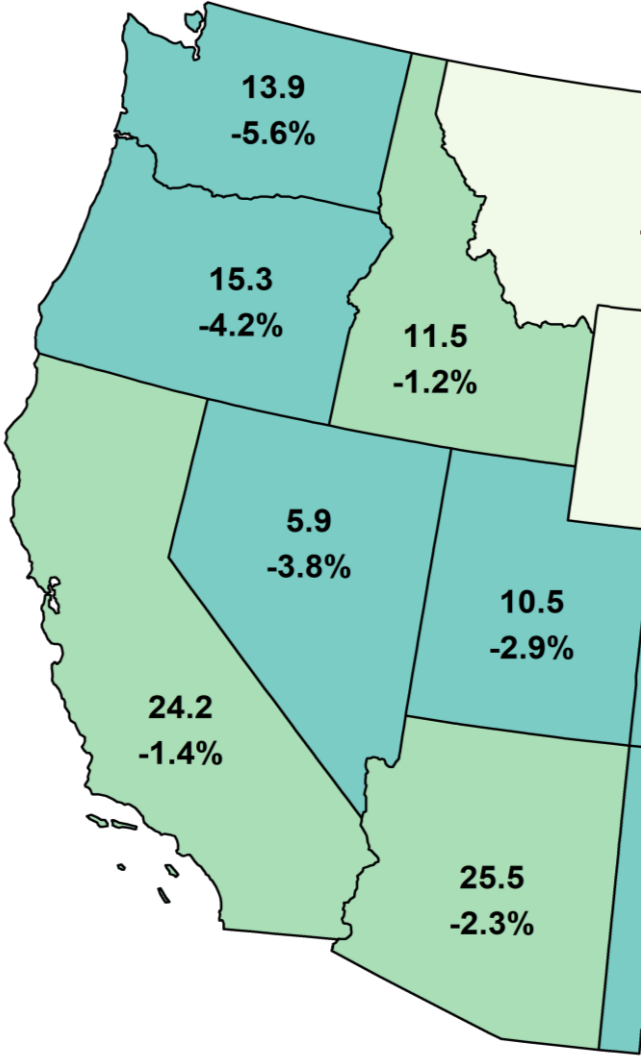
Average Farm Size (Acres)		
2017	2022	% Change
424	430	+1.4

Conversion by County

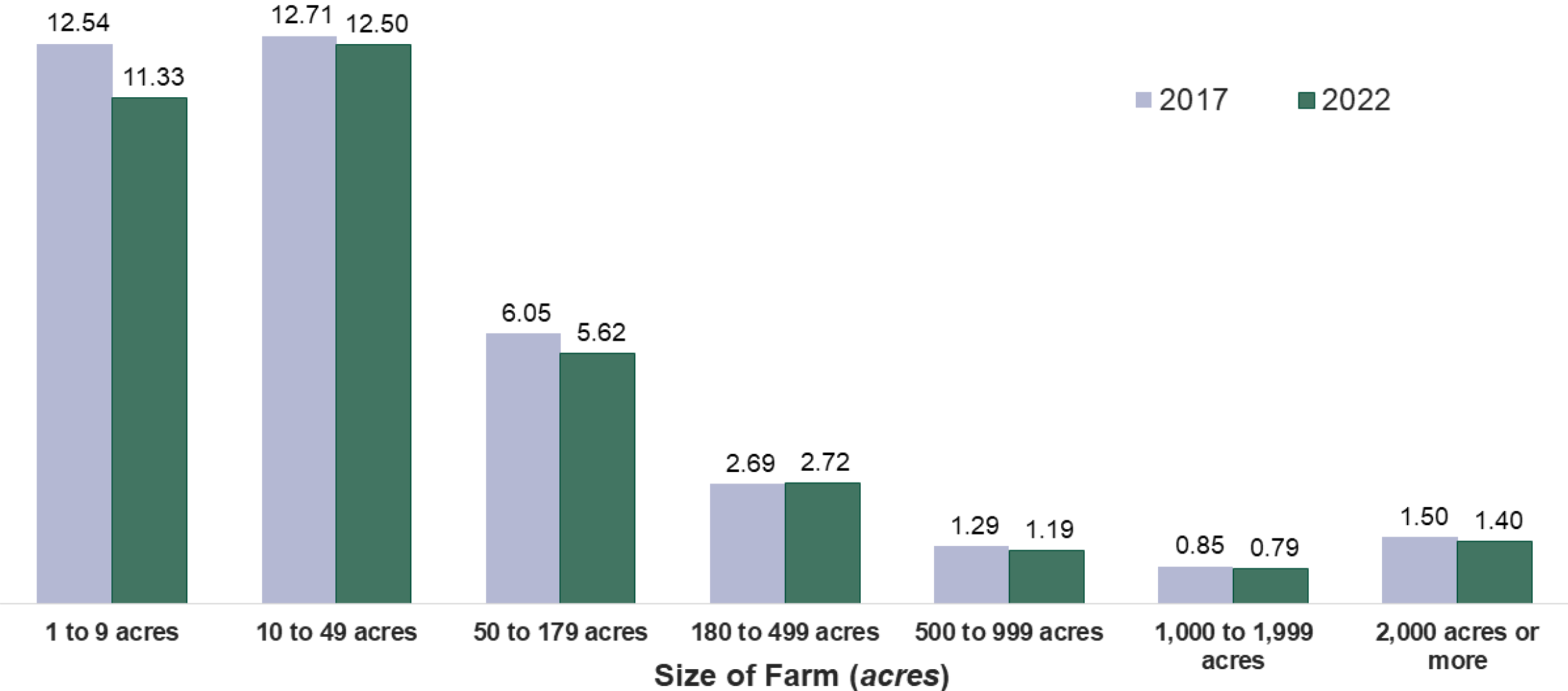
- Wasco
 - Jefferson
 - Sherman
 - Harney
 - Morrow
 - Douglas
 - Union
- -410,411 acres
 - -250,576 acres
 - -122,341 acres
 - -77,419 acres
 - -73,296 acres
 - -70,620 acres
 - -42,239 acres

Land in Farms *(million acres)*

As a Percent Change 2017 to 2022, by State



Number of Farms, by Size Class, 2017 and 2022 *(thousands)*



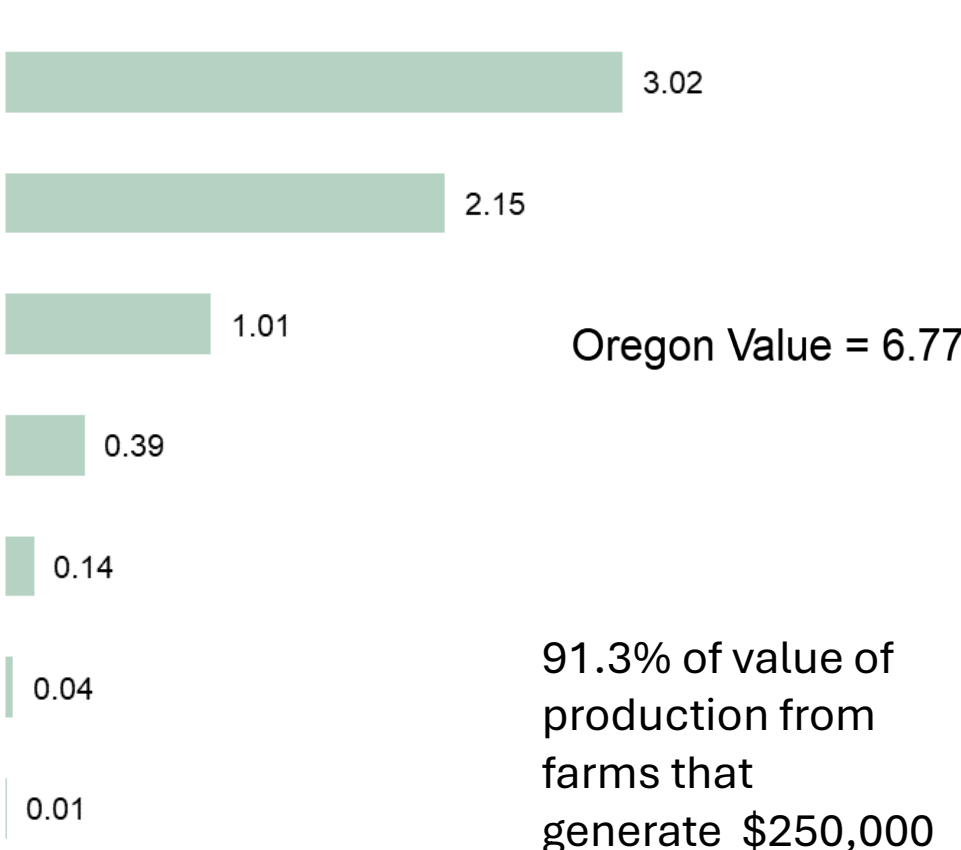
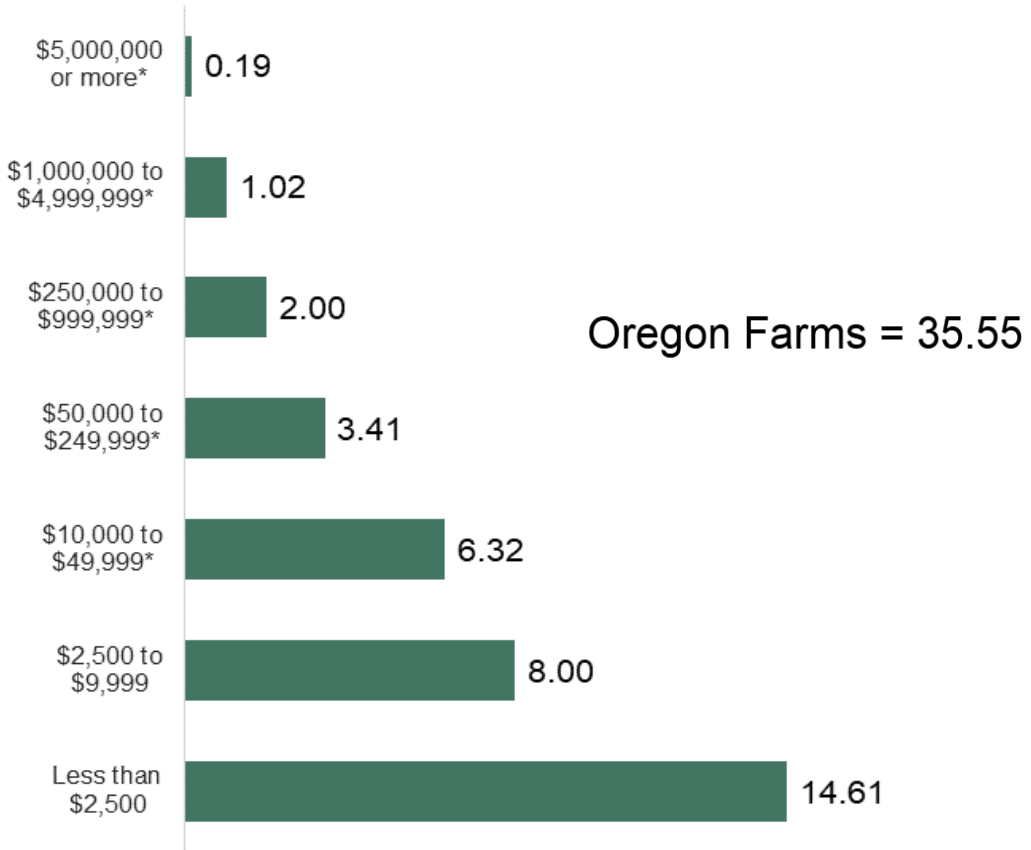
Number of Farms, by Sales Class, 2017 and 2022 *(thousands)*



Farms and Value of Production, by Sales Class, 2022

Number of Farms (*thousands*)

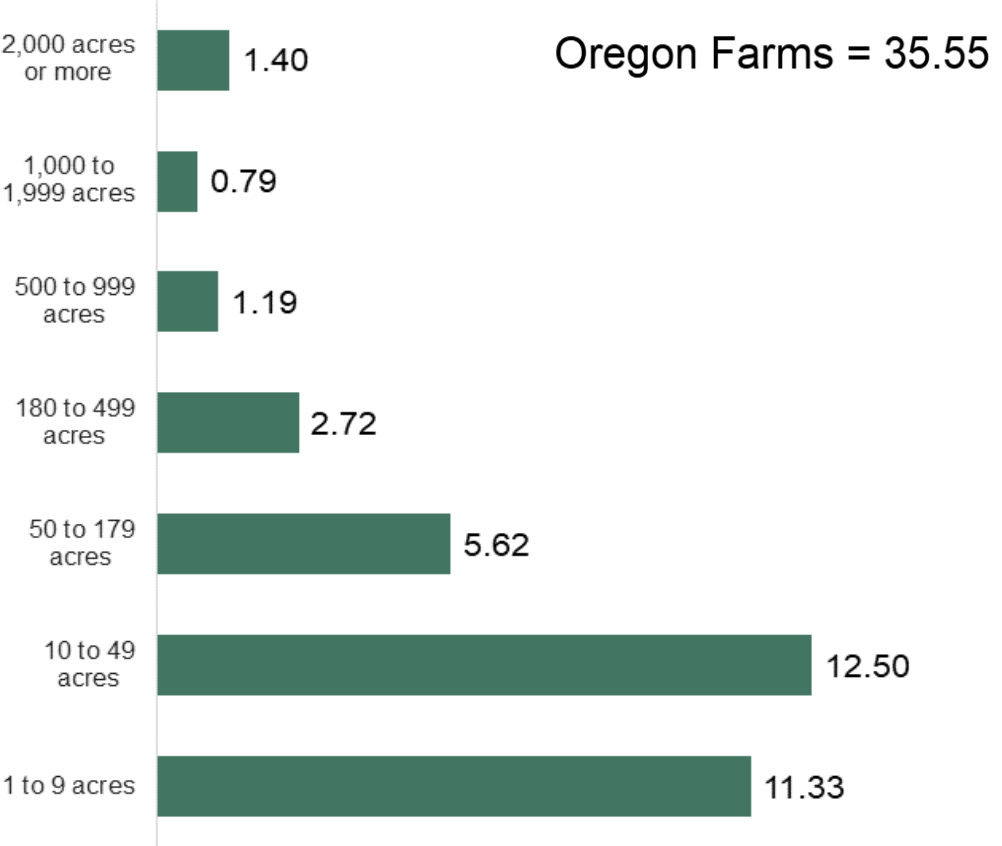
Value of Production (*\$ billions*)



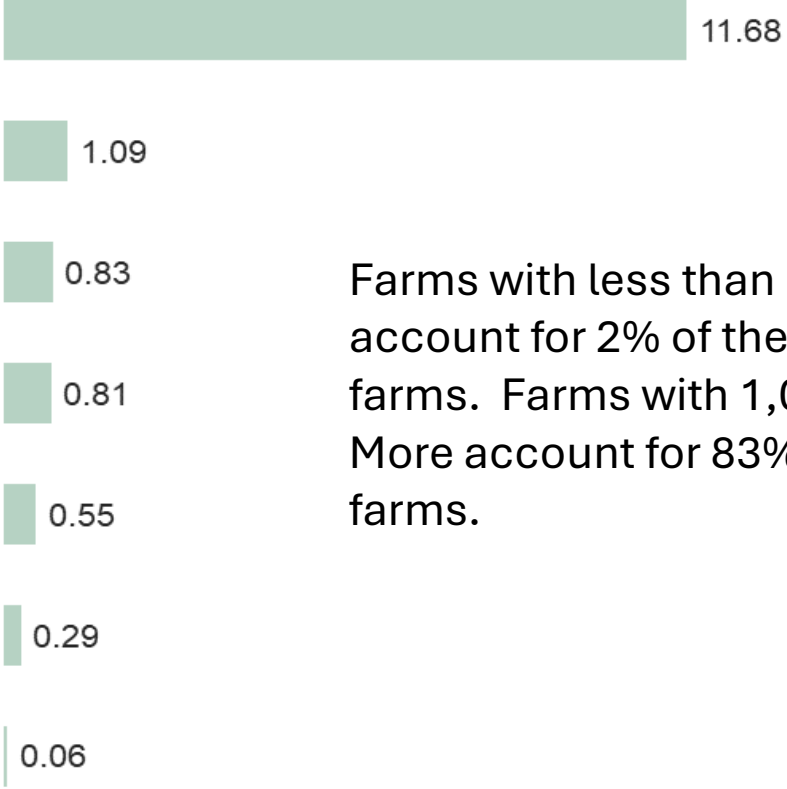
91.3% of value of production from farms that generate \$250,000 or more

Farms and Land in Farms, by Size Class, 2022

Number of Farms *(thousands)*



Land in Farms *(million acres)*



Farms with less than 50 acres account for 2% of the land are in farms. Farms with 1,000 acres or More account for 83% of the land in farms.

Oregon Land in Farms: 15.3 million acres

Oregon Agricultural Land Base

A photograph of a yellow tractor plowing a large, brown field in Oregon. The tractor is moving from left to right, kicking up a cloud of dust. In the background, there are rolling hills with green and brown fields, and a line of trees under a clear blue sky.

- 35,547 total farms
- 67% are 49 acres or less in size
- These farms account for 2.3% of the area of land in farms and 8.5% of the production value
- 71.4% of the area of land in farms involves farms that generate \$100,000 or more

Total land area of Oregon = 63.018 million acres



Jim Johnson
Land Use and Water Planning Coordinator
Oregon Department of Agriculture

james.johnson@oda.oregon.gov

*Mt. Hood and the
Hood River Valley*