



**FR****1****ENDS** of the  
**CH****1****LDREN**

# **Friends of the Children**

House Committee on Early Childhood and Human Services

September 23, 2024



# OUR MODEL

FR1ENDS of the  
CH1LDREN

# THE MODEL: SIX CORE ELEMENTS

- 1 CHILDREN FACING THE GREATEST OBSTACLES
- 2 PROFESSIONAL MENTORS (FRIENDS)
- 3 COMMIT FOR THE LONG HAUL
- 4 INDIVIDUALIZED AND INTENTIONAL
- 5 HOME, SCHOOL, COMMUNITY
- 6 EVALUATE, MEASURE, IMPROVE

# OUR MODEL WORKS



**83%** graduate high school



**93%** avoid juvenile justice



**98%** avoid early parenting

Compared to youth who experienced foster care without a Friend:

**55%**

**74%**

**74%**

**FR1ENDS** of the  
**CH1LDREN**





\*2012 Social Return on Investment Study by Harvard Business School Association of Oregon. Data was retrieved from Friends of the Children annual third-party evaluations, government resources, and academic studies cited by government agencies.

FR<sup>1</sup>ENDS of the  
CH<sup>1</sup>LDREN

It makes economic sense.

**\$1 = \$7**

---

For every \$1 invested in Friends of the Children, the community benefits over \$7 in saved social costs.

Helping one child saves the community \$900,000.

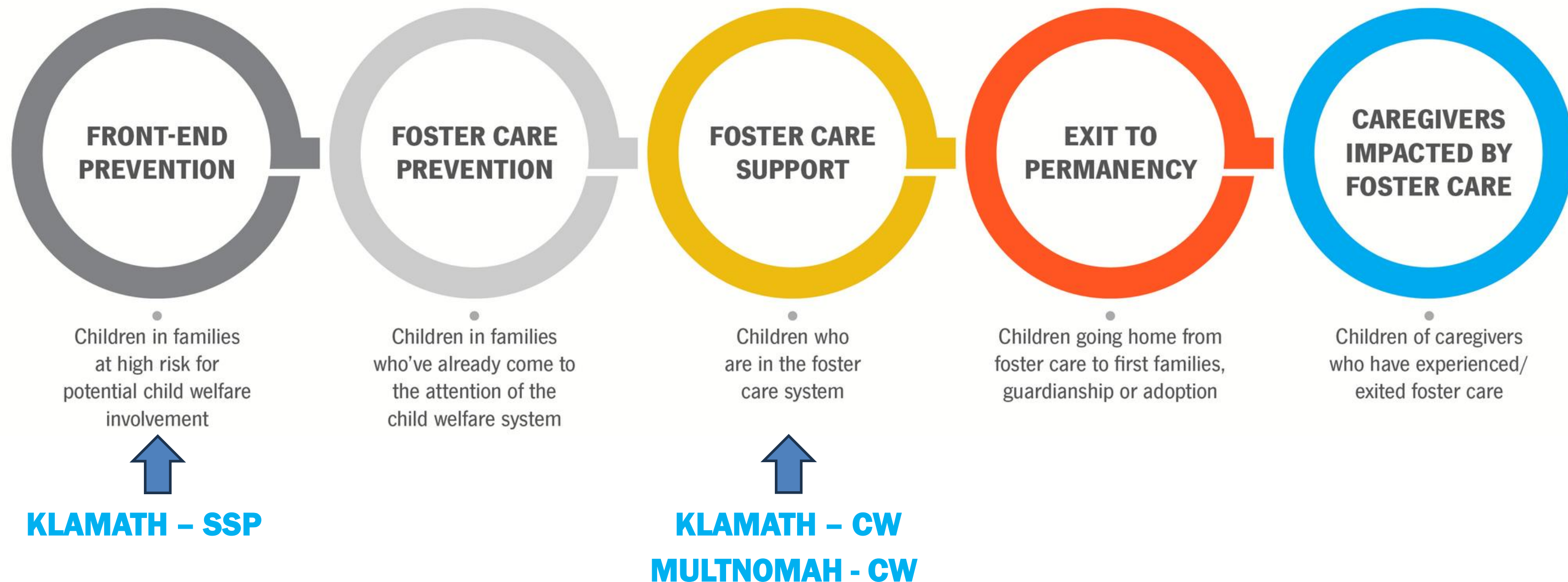
# CHILD WELFARE PARTNERSHIPS

FR1ENDS of the  
CH1LDREN



## OUR WORK ALONG THE WELL-BEING CONTINUUM:

We work with partners to identify families along the child and family well-being continuum to ensure that our model is serving the children and families who need us most:





FR1ENDS of the  
CH1LDREN

# THANK YOU!

[www.friendsofthechildren.org](http://www.friendsofthechildren.org)

[www.friendsklamath.org](http://www.friendsklamath.org)

[www.friendspdx.org](http://www.friendspdx.org)

