

Speaking on behalf of a coalition of volunteer resilience and community safety advocates

Nancy Hiser, Linnton Neighborhood Association, Tank the Tanks <nancyhiser@comcast.net>



Nikki Mandell, CEI Hub Task Force <Nikki.Mandell@gmail.com>





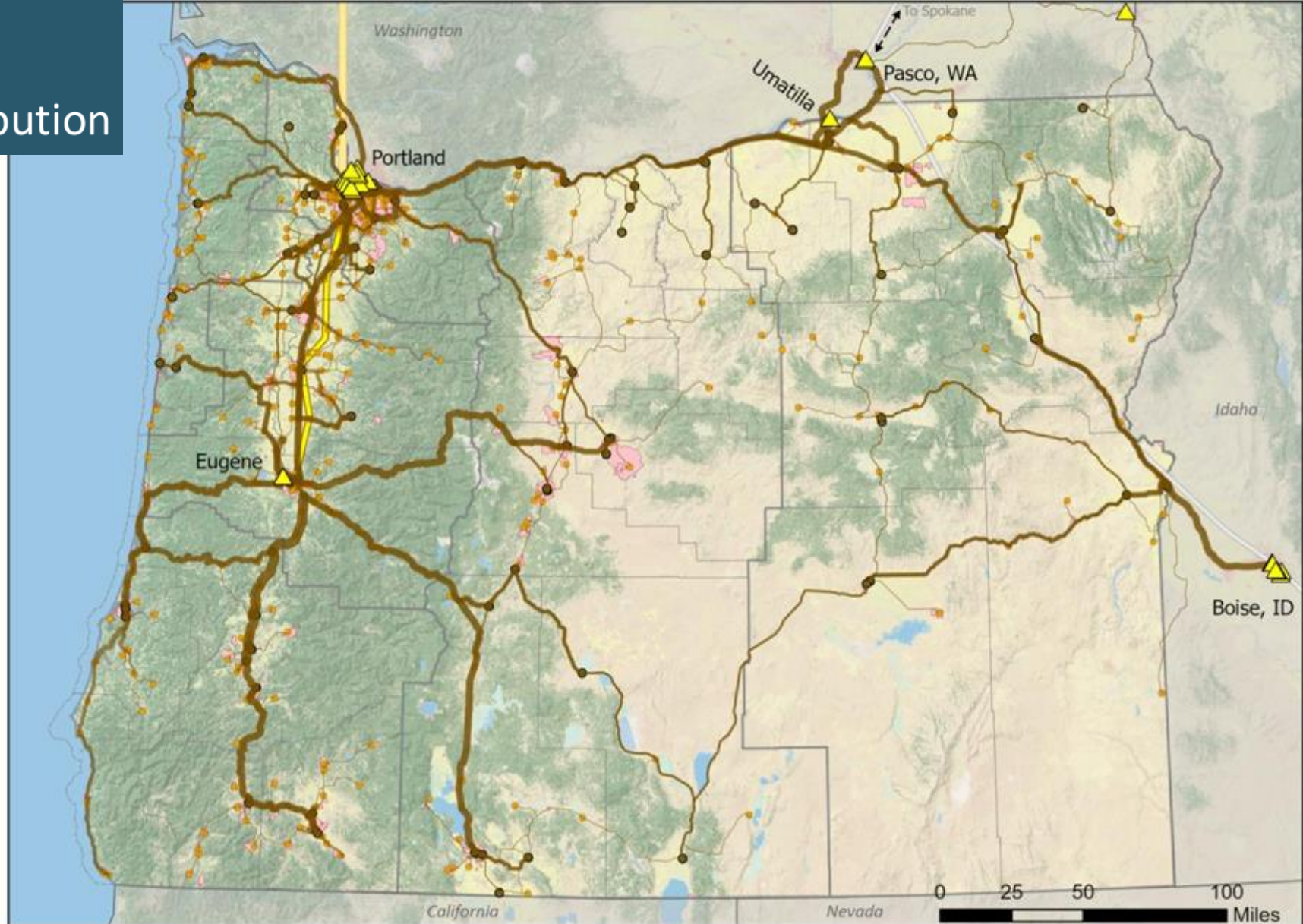
Mississippi River near New Orleans, 2018



Tank Farm, Hood County, TX, 2020

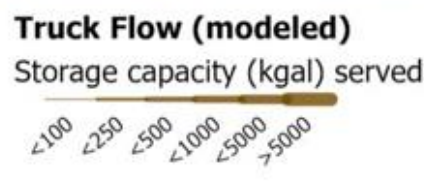
Liquid Fuels

Infrastructure – Diesel Distribution



- Counties
- OEM Regions
- States
- Populated Areas

- Fuel Facilities**
- ▲ Terminals (start)
 - Major Distributors (mid)
 - Retail, End Users* (end)



- Pipeline Flow**
- Within
 - Into
 - Through, Out

* Fuel storage (in above ground and underground storage tanks) is totaled by populated place, and located at representative central site for routing.

Source: Oregon Department of Energy Energy Security Plan stakeholder engagement handout

PUBLIC EDUCATION

- **Rumble on the River public forums** with panels of experts, co-sponsored by 40 orgs
- **Presentations to Portland Neighborhood Associations** – 48 NA's + 40 community and faith-based organizations signed a letter to electeds calling for action
- **Meetings and presentations to statewide organizations**
- **Websites**
- **Documentaries**
- **Social media**
- **Radio**
- **Public gallery**
- **Billboards**
- **Walking tours**
- **Community safety petition** - coming to you soon





LEGISLATION

Toxic Gas Release Study and Prevention / Control (reintroduce HB4044, 2024)

Extend Fuel Tank Seismic Stability Program Statewide / Lower Threshold

Risk Bonding to Limit Public Liability for Costs of Catastrophic Event and Removal of Abandoned Infrastructure

INFORMATIONAL HEARING

DEQs Report on the Fuel Tank Seismic Stability Program and Facility Risk Assessments