



Northwest Container Services Inc.

We are the International Import/Export shipping option

**Northwest's Premier Logistics
Provider**

www.nwcontainer.com

NWCS - Customers

Steamship and Chassis Customers



APL
Evergreen
Hamburg Sud
Hapag Lloyd
ONE
Maersk
Swire/Westwood



Cosco
MSC
CMA-CGM
Hyundai
Zim Lines
OOCL
Yang Ming



Hub Group



Steamship Lines utilize our services because it works:

- Container carriers use our rail services to move their containers either empty or full of imports and exports because we are safe, consistent, and reliable. With offer longer gate hours and shorter turn times gate to gate so truckers can move more exports and imports in a day when driving up from the valley.
- NWCS can add more rail service as needed in partnership with Union Pacific.
- NWCS offers a one-stop shop model for all International Intermodal Services related to shipping/logistics including rail and trucking. We also offer container repair, modification, and storage to meet the needs of our Oregon customers.
- Terminal 6 has closed several times before and NWCS was able to service ALL container carriers.

Northwest Container Services Rail Service Reduces Environmental Impact

➤ Environmentally responsible transportation (data from 2022)

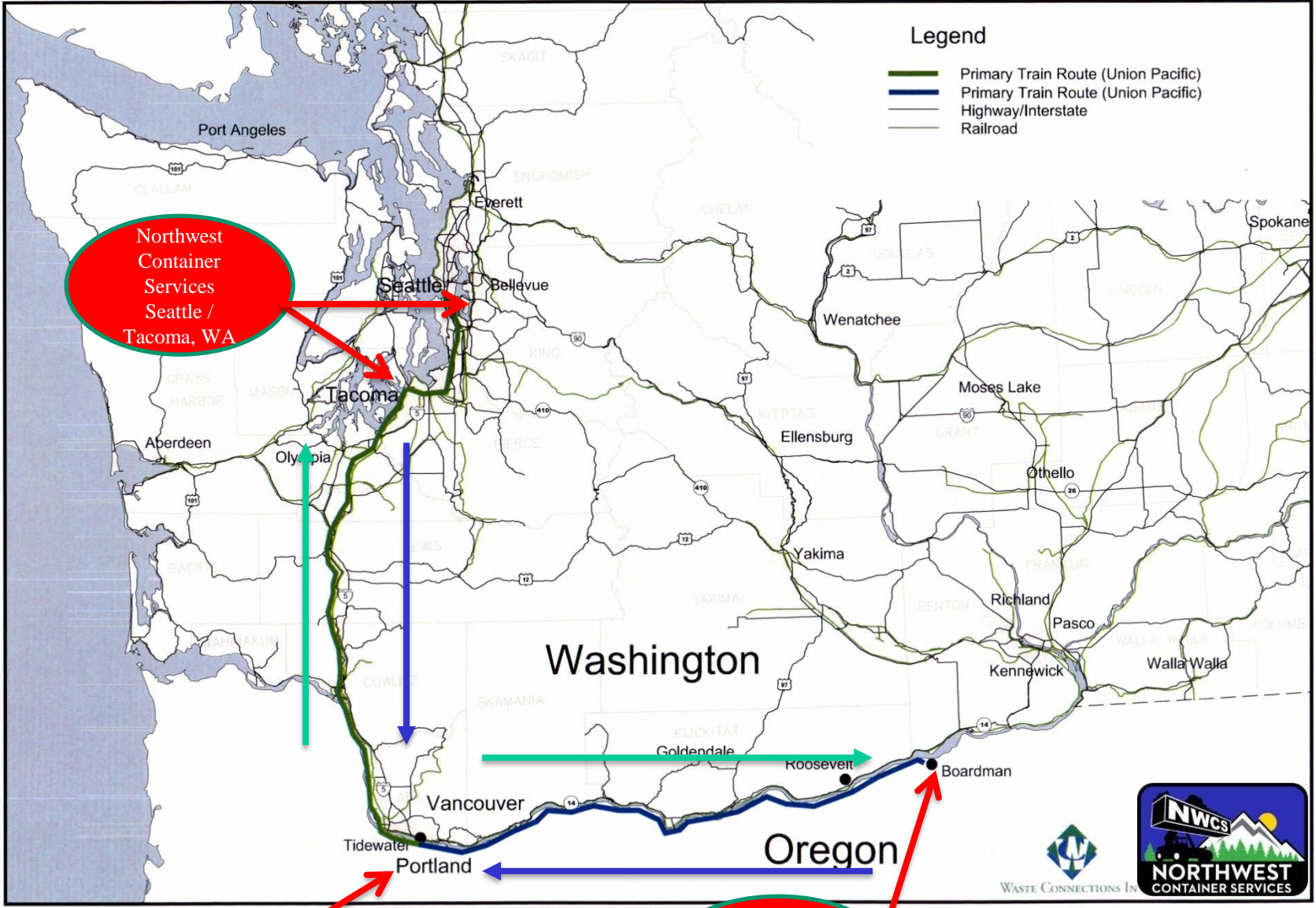
Equipment Type	Union Pacific Total Shipments	Total Tons	Total Loaded Miles	Carbon Footprint of Union Pacific Shipments*	Carbon Footprint of Comparative Truck Shipments*	Total Carbon Emission Savings*
Container	31,898	661,682	5,145,361	2,600	7,540	4,940

➤ Environmentally-minded actions include:

- NWCS Proactively retrofitted lifts in 2015 in partnership with Oregon DEQ with DOC filters to meet or exceed Tier 4 emissions standard before people were required to. The DOC filter traps diesel particulates and lowers GHG diesel emissions.
- Union Pacific is working toward a goal of reducing greenhouse gas (GHG) emissions 26% from locomotive operations by 2030.
- Setting a biofuel target to increase the percentage of low-carbon fuels consumed to 10% of our total diesel consumption by 2025, and further increase that consumption to 20% by 2030.
- Using technology to improve the fuel efficiency of our existing locomotive fleet.
- Testing renewable fuels to power locomotives.
- Purchasing battery-powered electric engines to cut GHG emissions, which represents the largest investment in battery-electric technology by a North American railroad.

Legend

- Primary Train Route (Union Pacific)
- Primary Train Route (Union Pacific)
- Highway/Interstate
- Railroad



Northwest
Container
Services
Seattle /
Tacoma, WA

Northwest
Container
Services
Portland, OR

Northwest
Container
Services
Boardman, OR

Primary Transportation Route



dcspakowski 02/23/06 map35w.dwg

NWCS - Portland, OR

80 Acres

Container and chassis capacity of 7,600 pieces

8 Tracks (Workable)

A – 1,875 ft.

B – 1,875 ft.

C – 1,900 ft.

D – 1,900 ft.

E – 1,740 ft.

F – 1,415 ft.

G – 1,440 ft.

H – 1,465 ft.

Total 13,610 ft.



NWCS - Seattle, WA

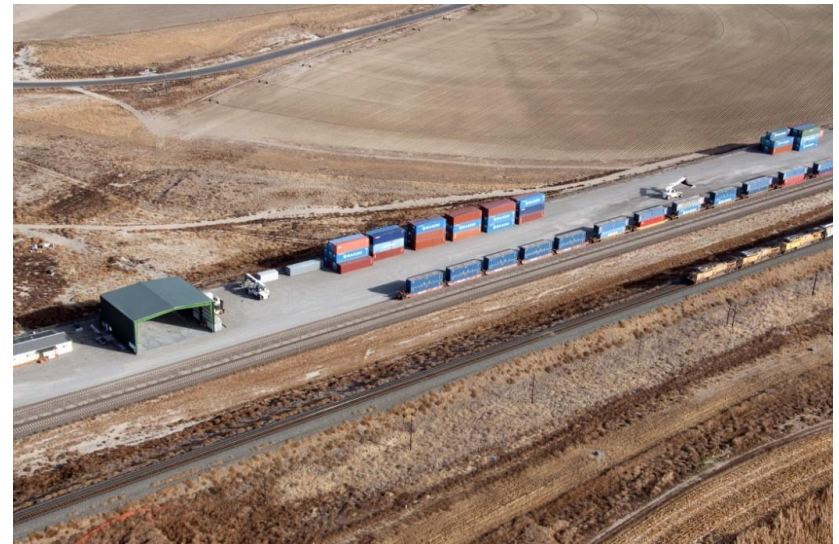


NWCS - Tacoma, WA



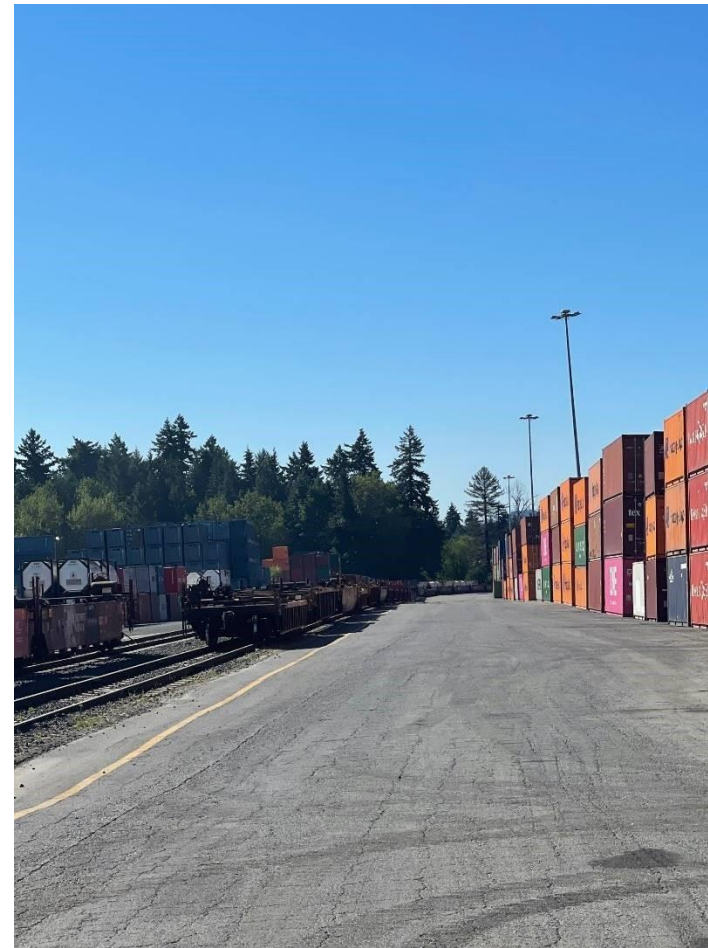
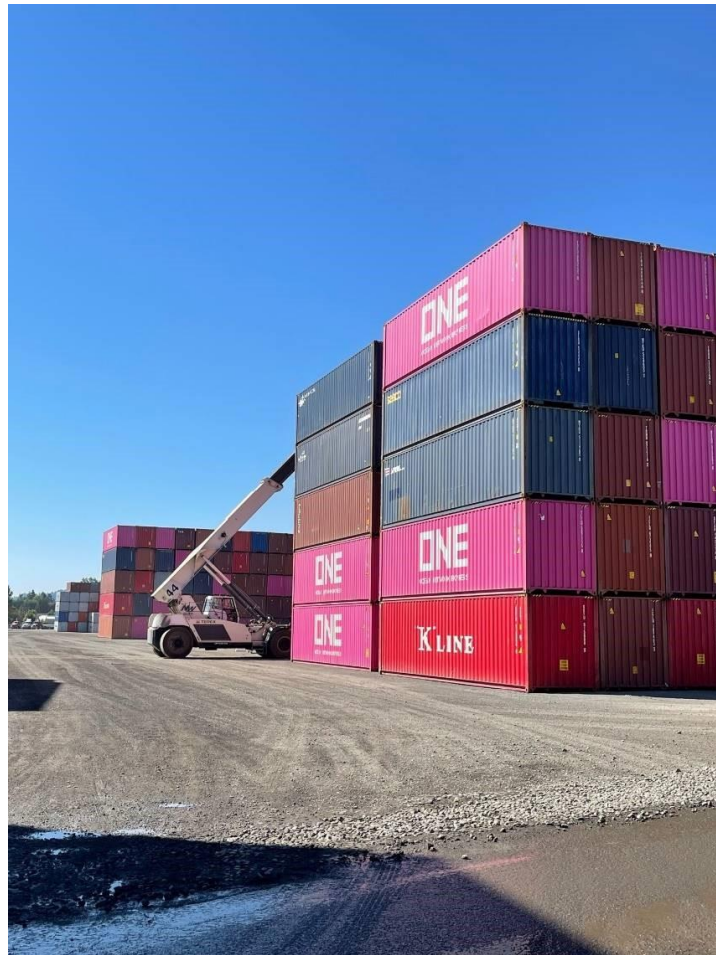
NWCS – Boardman, OR

➤ (opened in 2009)





Rail Logistics



Rail Logistics



Truck Logistics



Container Repair



Chassis Maintenance



Handling & Storage





Northwest Container Services Inc.
Thank you