



STATEWIDE COORDINATION

OEM Director Erin McMahan

OEM Preparedness Section Manager Alaina Mayfield



AGENCY PURPOSE



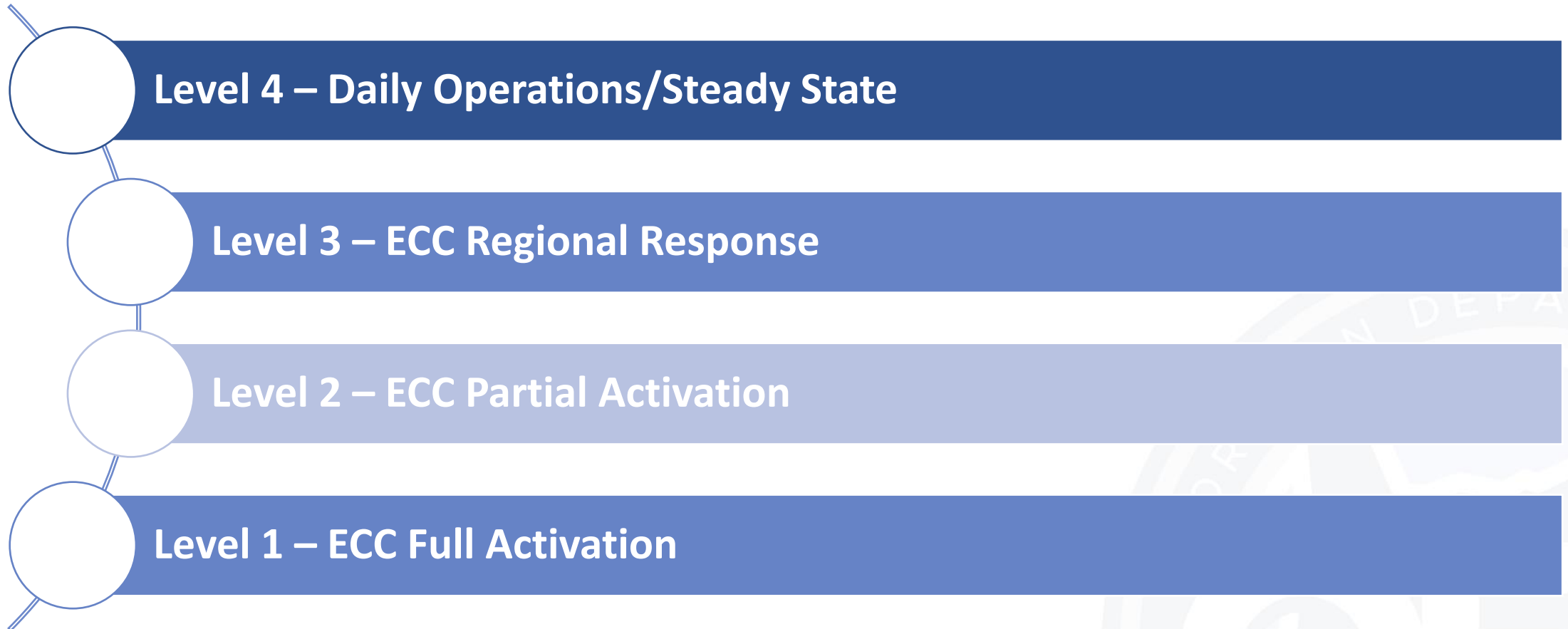
The Oregon Department of Emergency Management (OEM) coordinates, maintains and collaborates with partners in support of the Governor's statewide emergency services system.



The State Emergency Coordination Center (ECC) may be activated in a large incident or multi-jurisdictional emergency and serve as a command, control and communication hub to ensure all participating response agencies are coordinated.

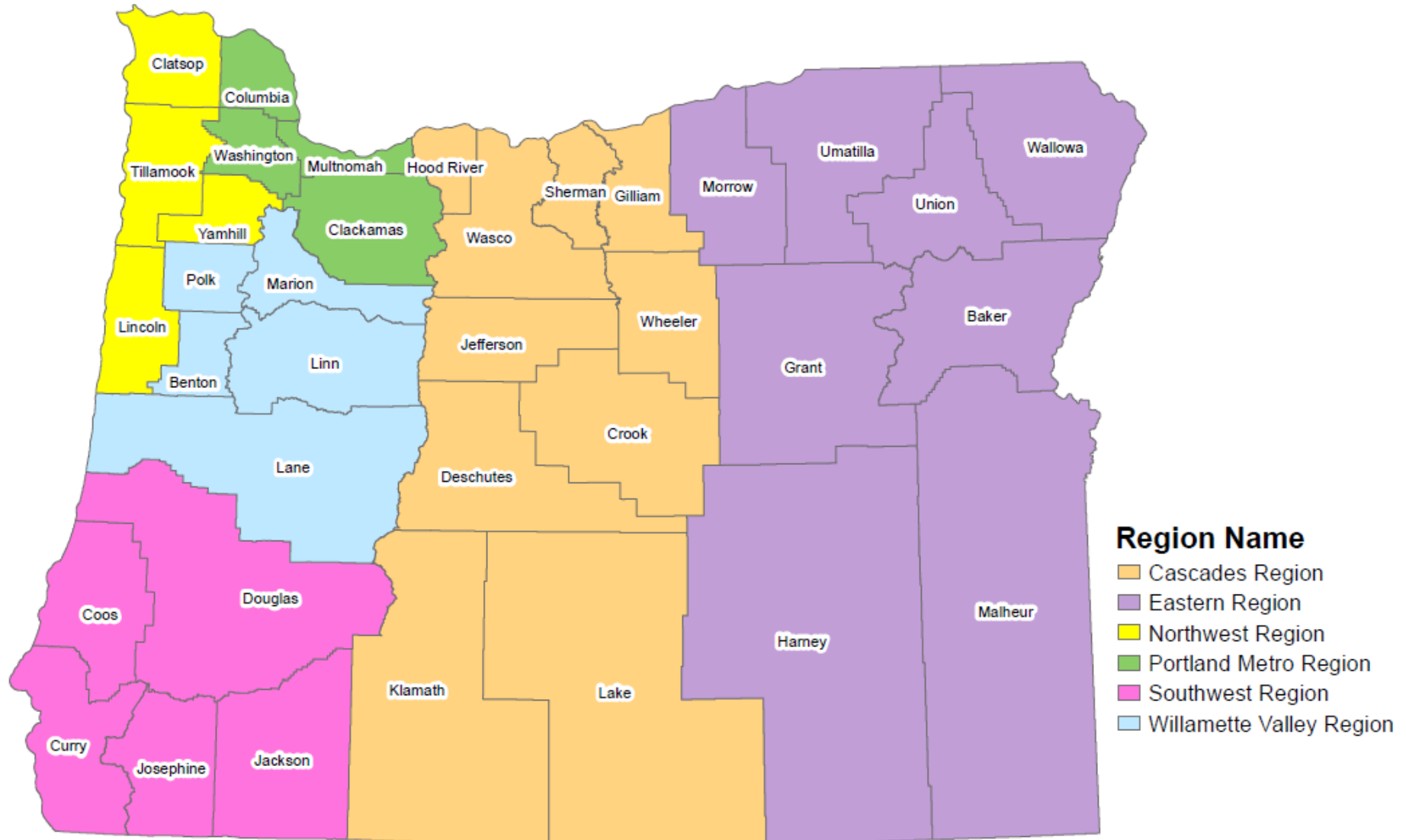


RESPONSE OPERATIONAL STATUS LEVELS





REGIONAL COORDINATORS





INCIDENT COMMAND SYSTEM

The Incident Command System (ICS) is a standardized approach to incident management that:

- Is used for all kinds of incidents, by all types of organizations and at all levels of government.
- Is flexible and scalable to small incidents as well as large and complex ones.
- Enables a coordinated response among various jurisdictions and agencies.
- Establishes common processes and language for incident-level planning and operational coordination.



ORGANIZING OREGON - ESFs



ESF 1
Transportation
ODOT



ESF 2
Communications
OEM/PUC



ESF 3
Public Works
ODOT



ESF 4
Firefighting
ODF/OSFM



ESF 5
Information and
Planning
OEM



ESF 6
Mass Care
ODHS OREM



ESF 7
Resource
Support
DAS



ESF 8
Health and
Medical
OHA



ESF 9
Search and
Rescue
OEM



ESF 10
Hazardous
Materials
DEQ/OSFM



ESF 11
Agriculture, Animals,
and Natural Resources
ODA



ESF 12
Energy
ODOE/PUC



ESF 13
Law Enforcement
OSP



ESF 14
Business and
Industry
OBDD



ESF 15
Public
Information
OEM



ESF 16
Volunteers and
Donations
OEM



ESF 17
Cyber and Critical
Infrastructure
Security
OTFC/DAS EIS

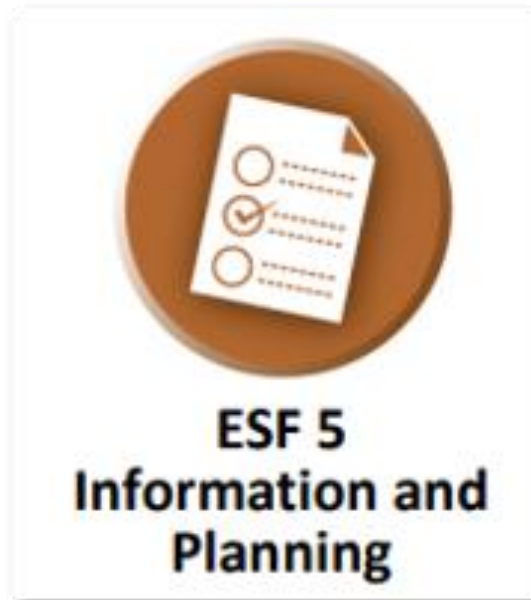


ESF 18
Military
Support
OMD



EMERGENCY SUPPORT FUNCTION 5

Emergency Support Function (ESF) 5 describes how the state will compile, analyze and coordinate overall information planning activities in the State ECC. As the ESF 5 primary agency, OEM:

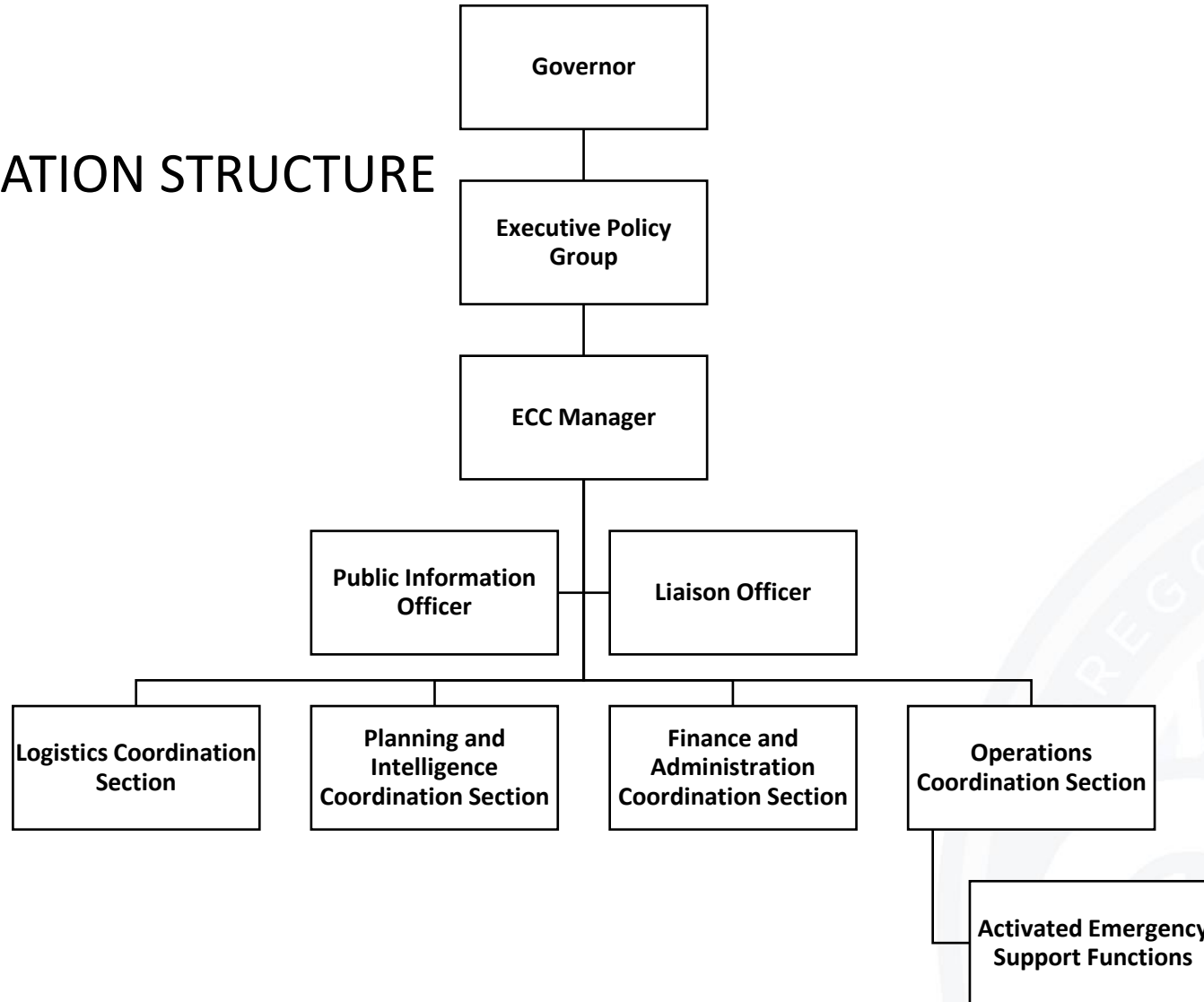


- Serves as a hub for the receipt and sharing of incident information.
- Coordinates with state agency operations centers and local, tribal and private sector emergency management organizations to facilitate the flow of situational information.
- Collects, processes, analyzes and distributes information to guide response and recovery activities.
- Collects and aggregates damage assessment data and tracks local declarations.



STATE EMERGENCY COORDINATION CENTER

COORDINATION STRUCTURE











HAZARD SITUATION OVERVIEW

Hazard Situation Overview

[Hazards Overview](#) | [Weather](#) | [Drought Status](#) | [Latest Earthquakes](#) | [Fire Activity](#) | [Flood Forecast](#) | [Volcano Activity](#) | [Transportation Impacts](#) | [Shelter Activity](#) | [FEMA Daily Operations Briefing](#)

Oregon Hazards Overview

<h4>Current Wildfires</h4>  1 <p>See Wildfires Dashboard <small>Last update: 39 seconds ago</small></p>	<h4>Local Drought Declarations</h4>  1 <p>See Drought Dashboard <small>Last update: 39 seconds ago</small></p>	<h4>Earthquakes (Last 7 Days)</h4>  3 <p>See Earthquakes Dashboard <small>Last update: 39 seconds ago</small></p>	<h4>Gages Forecasted at or Near Flood Stage</h4>  0 <p>(Forecasted Over Next 72 Hours) See Flood Gages Dashboard <small>Last update: 39 seconds ago</small></p>	<h4>Volcanoes at Alert Level</h4>  0 <p>See Volcanoes Dashboard <small>Last update: 39 seconds ago</small></p>
<h4>Acres Burned</h4> 6,340 Acres <p>See Wildfires Dashboard <small>Last update: 39 seconds ago</small></p>	<h4>State Drought Declarations</h4>  0 <p>See Drought Dashboard <small>Last update: 39 seconds ago</small></p>	<h4>Greater than 2.0 Magnitude</h4> <p>See Earthquakes Dashboard <small>Last update: 39 seconds ago</small></p>		

[Hazards Overview](#) | [Fires Map](#) | [Drought Map](#) | [Earthquakes Map](#) | [Flood Gages Map](#) | [Volcano Map](#)



MUTUAL AID & ASSISTANCE

ORCAA

Oregon Resource Coordination Assistance Agreement

Oregon Resource Coordination Assistance Agreement:

State member jurisdictions can request assistance from other members to prevent, mitigate, respond to, or recover from an emergency or disaster or in concert with exercises.



Emergency Management Assistance Compact

Emergency Management Assistance Compact:

An all-hazards national mutual aid system. EMAC members can share resources from all disciplines, protect personnel who deploy and be reimbursed for mission-related costs.



Pacific Northwest Emergency Management Arrangement:

An arrangement that crosses international borders, allowing for resources to be shared between states and provinces in the Pacific Northwest.



ALERTS, WARNINGS & NOTIFICATIONS



Integrated Public Alert & Warning System (IPAWS)

- FEMA's national system for local alerting.
- Provides authenticated emergency and life-saving information to the public through:
 - Cell phones using Wireless Emergency Alerts (WEA).
 - Broadcast radio and television through the Emergency Alert System (EAS).
 - The National Oceanic and Atmospheric Administration's Weather Radio.



OR-Alert

- Ensures statewide public access to receive alerts, warnings and notifications (AWN) systems.
- Enables real-time sharing of hazard information across Oregon's 36 counties and tribal governments.
- County emergency managers can access notification tools including IPAWS.
- OR-Alert webpage directs people to the signup page for each county.
- ODEM supports and serves as a backup for local messaging.



PREPARE FOR WILDFIRE INFOGRAPHICS

**BE READY.
BE SET.
GO NOW!**

Know evacuation levels and follow advice of emergency officials.
Make the best decision for your safety. Don't wait to evacuate if you feel unsafe!



LEVEL 1	LEVEL 2	LEVEL 3
BE READY PREPARE TO EVACUATE <i>BE AWARE OF DANGER IN THE AREA</i>	BE SET BE SET TO EVACUATE <i>AT A MOMENT'S NOTICE</i> <i>SIGNIFICANT DANGER IN THE AREA</i>	GO NOW! LEAVE IMMEDIATELY! <i>EXTREME DANGER IN THE AREA</i>
<ul style="list-style-type: none">Stay Informed.Have your plan & go-kit ready.Act early if you or your loved ones can't move quickly. 	<ul style="list-style-type: none">Follow your evacuation plan & grab your go-kit.Check news & radio for updates.Conditions change rapidly. Leave if you feel unsafe. 	<ul style="list-style-type: none">Leave without delay. It is unsafe to stay.Do not stop to gather belongings or protect your home.Do not return until officials announce the area is safe. 

**Be informed.
Sign up for alerts.**
www.ORAAlert.gov



Are You **Wildfire Ready?**



Have a plan.



Emergency Check List

- People
- Pets
- Prescriptions
- Photos
- Important Papers



Are You **Wildfire Ready?**



Make an emergency go-kit.



Are You **Wildfire Ready?**



Visit wildfire.oregon.gov for resources and additional information.

THANK YOU!

