



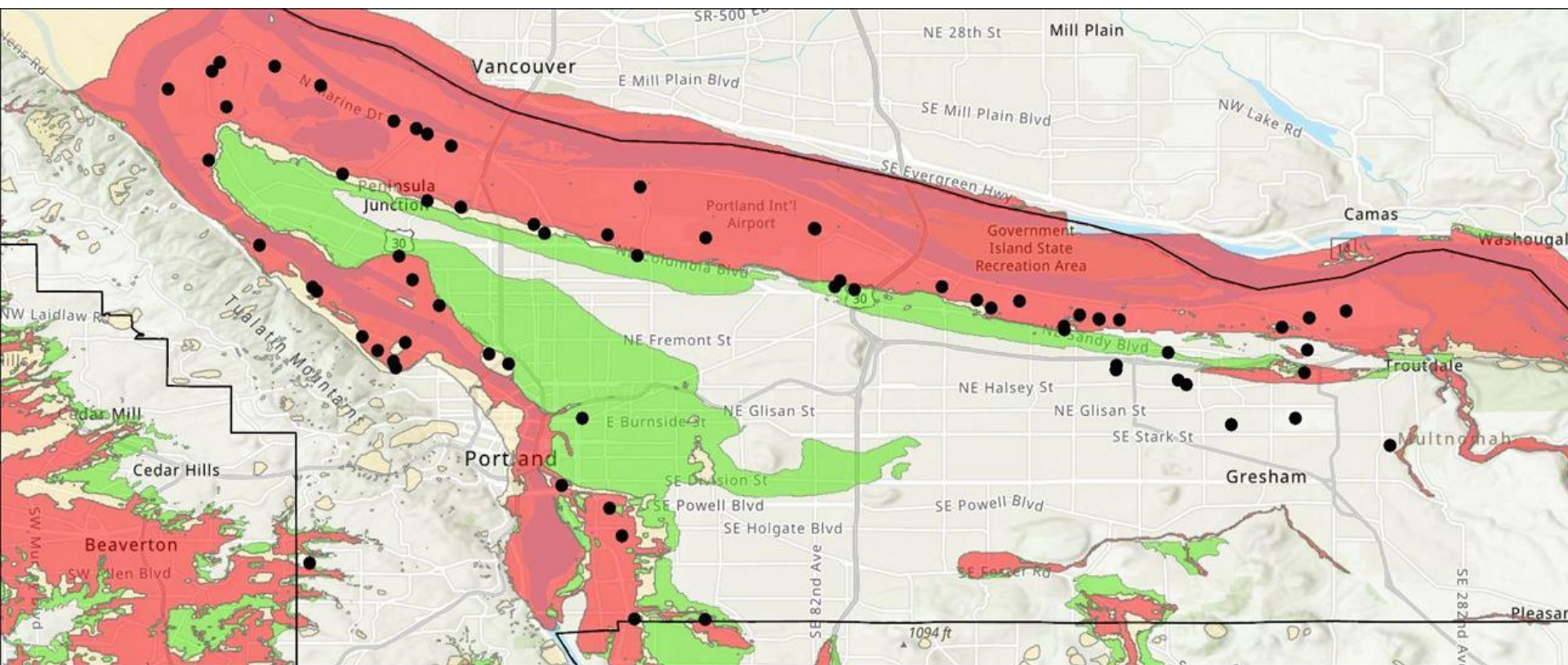
Office of Emergency Management

Inhalation Hazards in Multnomah County

Presented by Christopher Voss

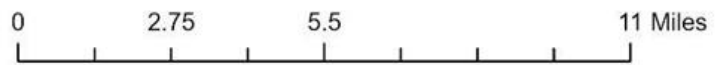
Multnomah County
January 11, 2024

MULTNOMAH COUNTIES TOP 70 TIER II FACILITIES

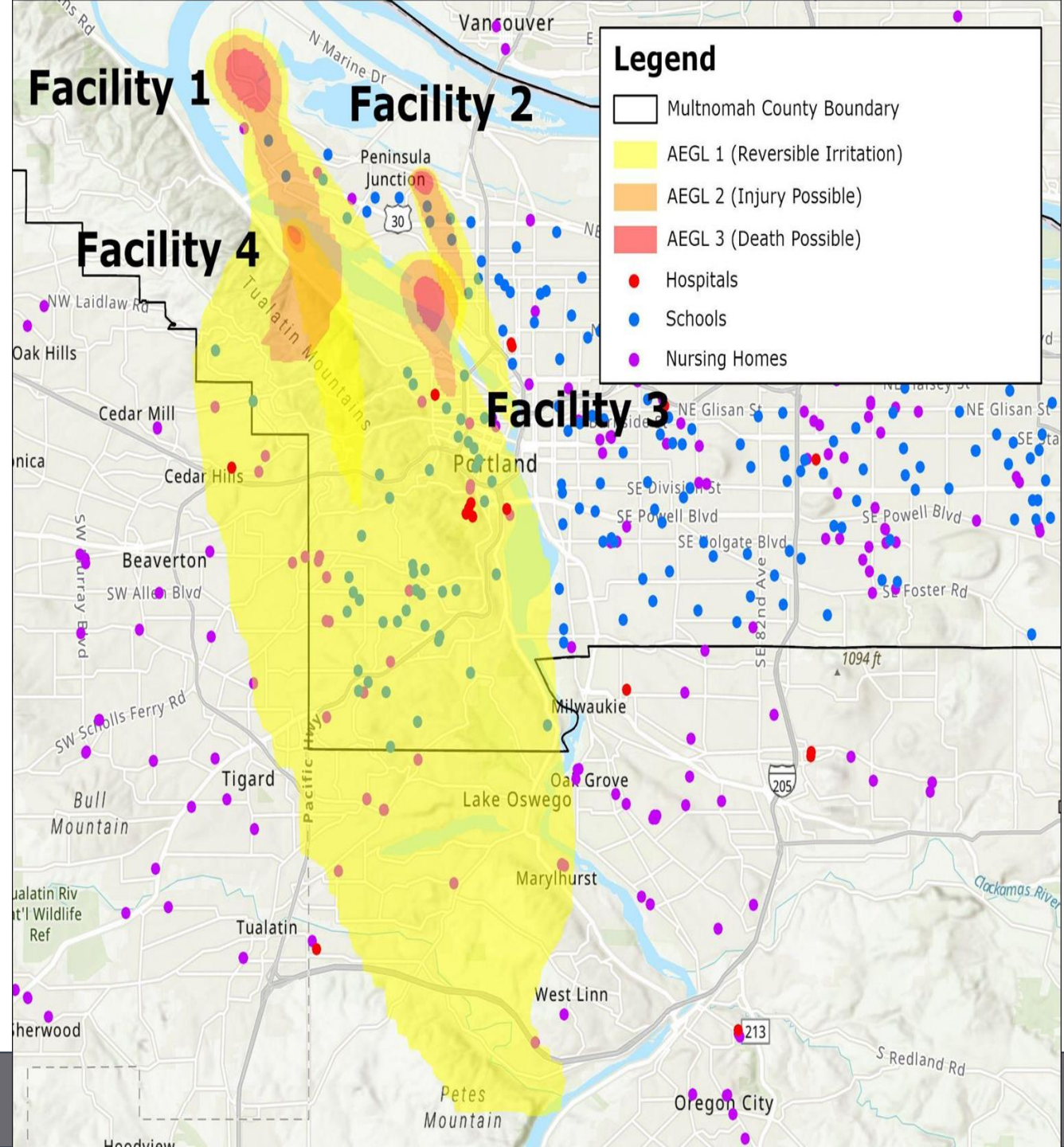


DoGAMI Soil Liquefaction

- High
- Moderate
- Low
- Critical Facilities
- Multnomah County Boundary



SUMMERTIME RELEASE MODELS W/COMBINED MODELING



Concerns

- Vast majority of locations storing inhalation hazard gases happen to be placed on highly vulnerable soils, susceptible to liquefaction and lateral spread
- Understanding Risk - What the report includes and does not include.
 - Probability - Not understood
 - Consequence - modeling
- County lines are not recognized by Inhalation Hazards



Next Steps

- Request the DEQ to complete a study on earthquake-induced toxic
- Included plume modeling and engineering to assess high risk zones and high-risk facilities across the state
- Issue a series of recommendations that could assist in alleviating this risk.

