

The logo for the System of Care Advisory Council (SOCAC) features the acronym "SOCAC" in a large, bold, blue sans-serif font. A thin horizontal line is positioned directly beneath the letters.

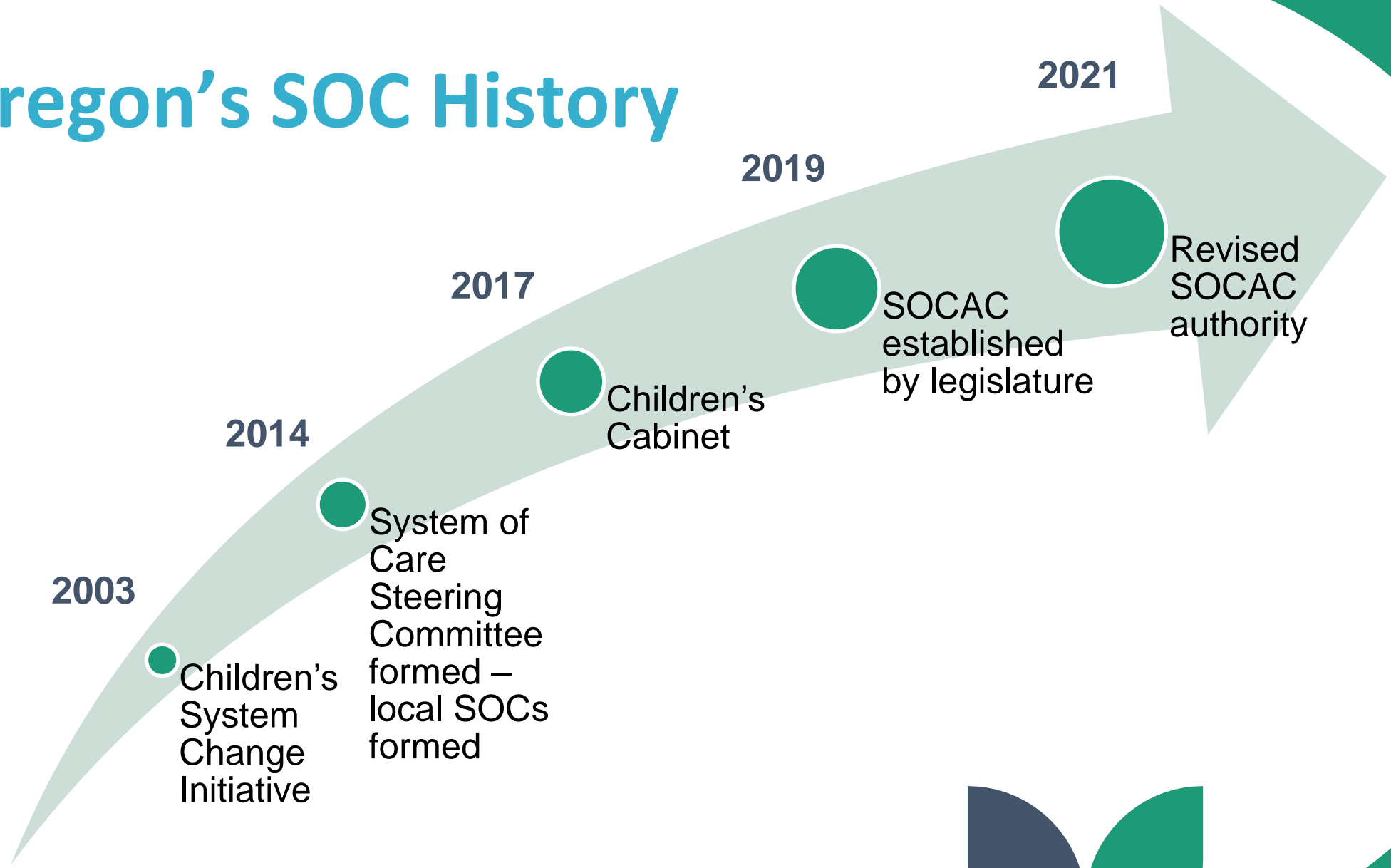
System of Care Advisory Council

## Temporary Lodging Context

The slide features several decorative elements: a light blue circle in the top-left corner; a large graphic on the right side consisting of two overlapping leaf-like shapes, one in a dark blue-grey color and the other in a teal color; and a green horizontal bar at the bottom. On the left side of this bar is a dark blue-grey circle, and on the right side is a teal rounded rectangle. The text "Anna Williams, Director" is centered in the green bar in a bold, blue font.

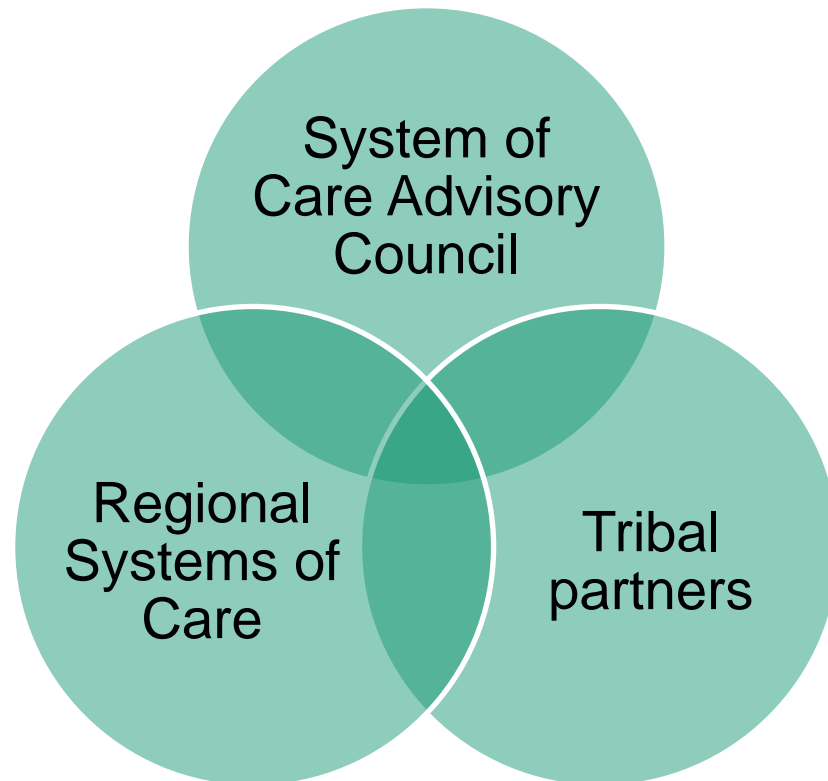
**Anna Williams, Director**

# Oregon's SOC History



# Today's System of Care

System of Care Advisory Council was established in 2019 to be a central, impartial forum for statewide policy development, funding strategy recommendations and planning. The council's goal is to improve the effectiveness and efficacy of child-serving state agencies and the continuum of care that provides services to youth (ages 0-25).



# Strategic Plan Pillars

**Youth and family  
centered**



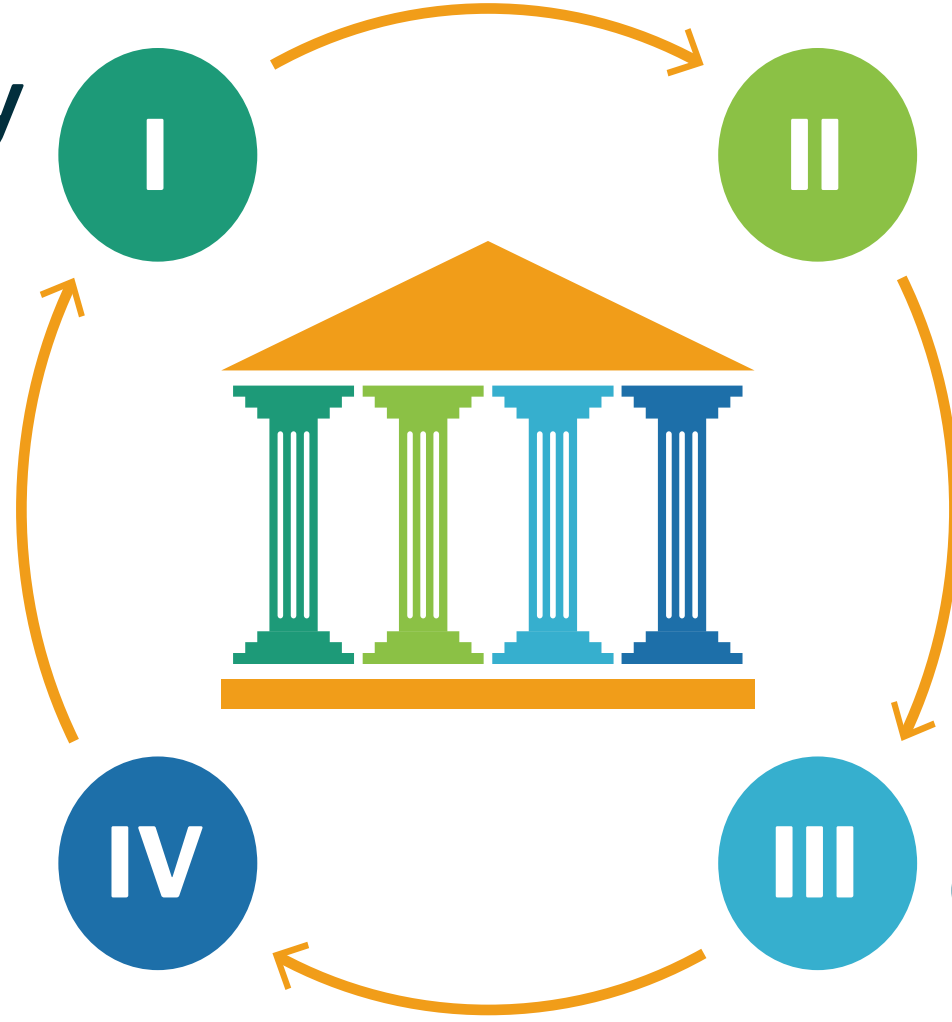
**Integrated  
systems**



**Community  
based**



**Culturally and  
linguistically  
responsive**



# Today's System of Care for Children

- Children's services in Oregon are provided a variety of agencies and systems
  - DHS – CW, ODDS, SSP, VR
  - OYA
  - OHA – contracted services via CCOs, county BH providers, and more
  - Counties
  - Schools and school districts
  - Community based providers



# Today's System of Care

- Oregon utilizes child abuse and neglect statutes as a tool for oversight for child serving agencies, including foster parents.
- People working in these settings report frequently worrying that they will be accused of abuse or neglect in the context of supporting youth with high needs or aggressive behaviors. This continuous elevated level of tension negatively impacts the therapeutic environment, and children with histories of trauma have heightened sensitivity to this type of stress.
- Program staff, foster parents, and child welfare workers fear injury because they feel inadequately trained to prevent behavioral escalation or feel they do not know how to safely intervene when youth are using aggression.



# Today's System of Care

- ODHS and OHA report a shortage of about 400 youth residential beds based on current need.
- OHA is in process of building a robust set of community-based services to prevent the need for residential services for as many youth as possible
- ODE is improving access to mental and physical health services in schools, and Medicaid billing in schools is in development
- OYA building psychiatric and substance use treatment capacity
- Behavioral health workforce investments
- CCO investments in youth services



# Child Welfare – Intervention of Last Resort

- By the time Child Welfare gets involved, children and their families have typically had numerous interactions with state systems for support and prevention
- Child Welfare involvement is a signal that those other systems failed to meet the needs of a particular child or their family
- Youth in temporary lodging are the most complex cases
- System-wide solutions are required – each system needs to be clear on their role and responsibilities as we build solutions together





# Temporary Lodging – Symptom of a Larger Problem

- Robust community-based and culturally appropriate services take time to build
- System capacity – working across systems to build a more flexible, responsive system
- Consistent, collaborative leadership



# Cross-system Collaboration is the Solution

- OHA, ODHS – SSP, CCOs, Counties and community-based services
- SOCAC’s Safety Workgroup Report provides specific suggestions for a trauma informed policy strategy
- Special Master’s Report and related ruling
- Cross-system engagement at leadership level
- Provider community – trust building in both directions



# Questions?

Anna Williams, Director  
System of Care Advisory Council

[Anna.k.williams@oha.Oregon.gov](mailto:Anna.k.williams@oha.Oregon.gov)

SOCAC Data Dashboard:

<https://www.oregon.gov/odhs/data/pages/cw-dashboard-soc.aspx>

