



Estimated SSA Funding Needs

Dustin Melton, Director & Jessica Visinsky, OPA

Child Nutrition Programs

Oregon Department of Education (ODE)

Oregon's History of Support



[Phoebe Flanigan / OPB](#)

Support for lunches and breakfast served to reduced-price eligible students

Support for healthy snack guidelines for foods sold in schools

Support for the expansion of Summer meal sites and Afterschool meal programs

Support for Breakfast in the Classroom and Breakfast instructional minutes

Support for Farm to School funding and educational programming

Student Success Act Initiatives – Hunger Free Schools Account

Federal School Meal Claiming

Standard Free and Reduced-Price (FRP) Counting and Claiming

Students are certified via direct certification or meal application

Meals are counted and claimed based on eligibility category

Federal reimbursement is received based on free, reduced-price, or paid category (~4.33, 3.93, .48)

Community Eligibility Provision (CEP)

Voluntary program with eligibility requirements

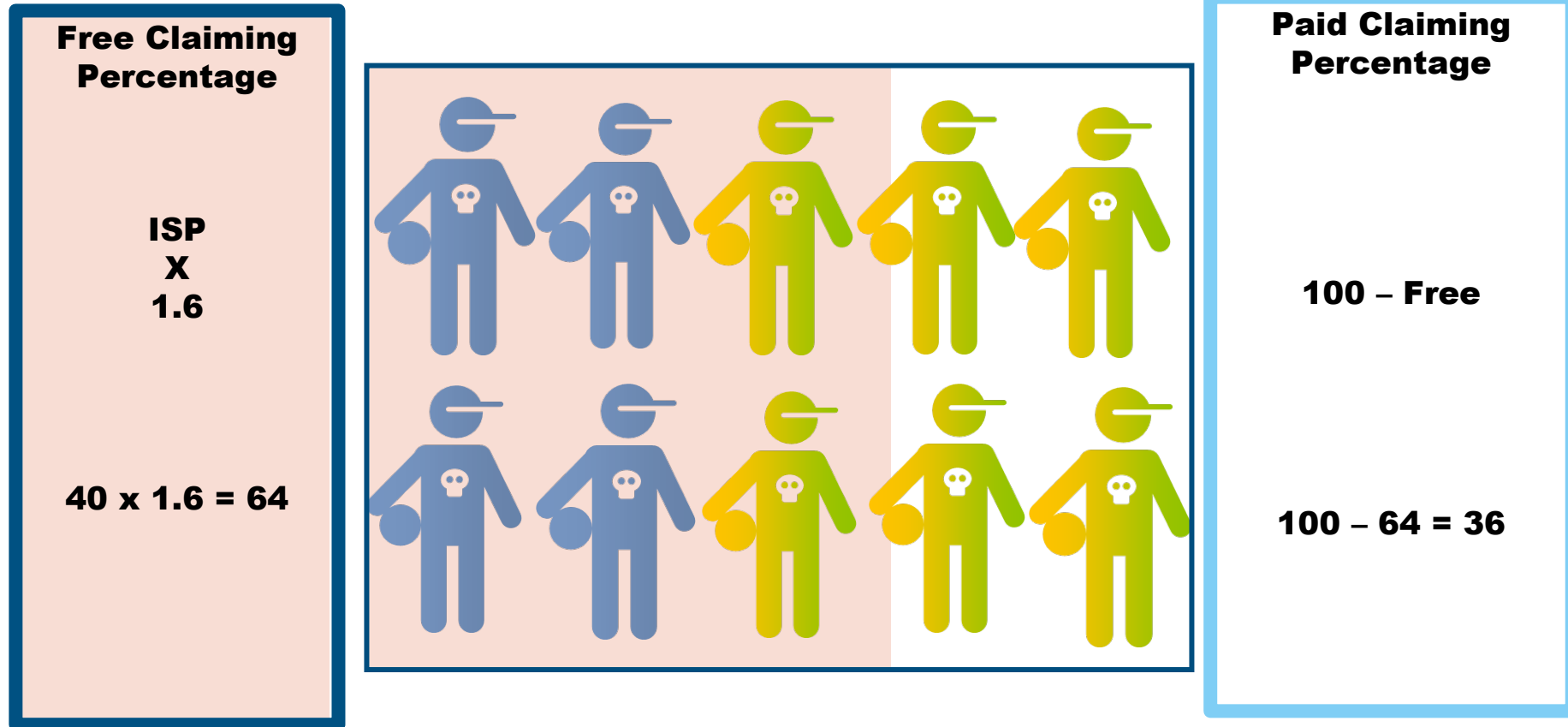
Based on enrollment; percentage of directly certified students (Identified student percentage (ISP))

Meals are counted and claimed in bulk

Federal reimbursement is received based on free percentage (ISP x 1.6) and paid percentage

Elected percentages carryover through four years.

Community Eligibility Provision



Student Success Act (SSA) – Nutrition Initiatives

Community Eligibility Provision Incentive (CEPI)

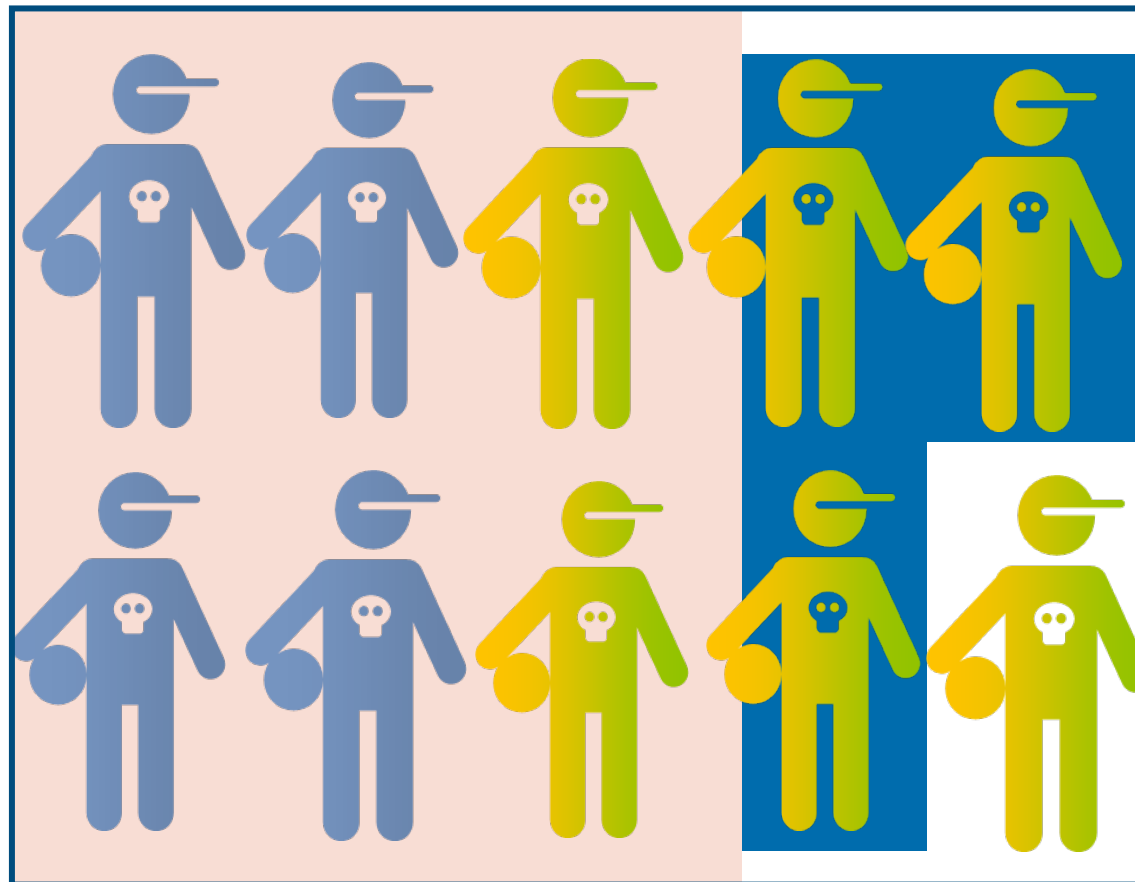
- Schools/Districts electing CEP at 40% Identified Student Percentage Threshold
- Receive Federal reimbursement based on 1.6 multiplier
- Receive supplemental State funding so that 90% of meals receive Free reimbursement

Expanded Income Guidelines (EIG)

- Schools using standard counting and claiming must provide meals at no cost to students in 186-300% of federal poverty guidelines
- Receive Federal paid rate reimbursement + State supplement for EIG meals

SSA Nutrition Initiatives

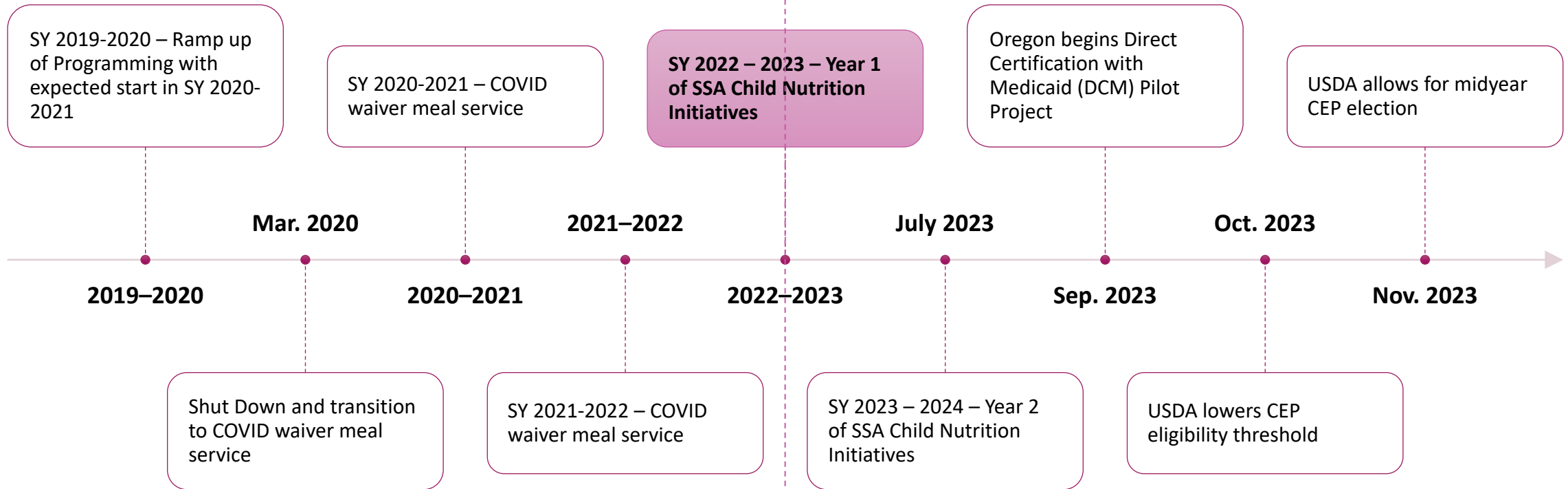
Federal Free



Federal Paid +
Oregon
Supplement

Federal Paid

Timeline of CEPI and EIG



Forecast's Technical Assumptions

- Overall used meal counts from SY2022-2023 and existing active sites from SY2023-2024
- SY2023-24:
 - Site participation type matches actual participation type
 - CEP and CEPI sites maintain current grouping and claiming percents
 - Assume 7% of standard counting and claiming meals reimbursed at EIG rate (state avg.)
- Cycle 1 (SY2024-25 to SY2027-28) & Cycle 2 (SY2028-29 to SY2031-32):
 - Identified Student Percentage recalculated using DCM data
 - Recalculated before Cycle 2 assuming statewide 10% decline in DCM participation, as forecasted by OHA.
 - If eligible for CEP at 25% assume CEP
 - All other sites (excluding RCCI's) operate EIG with 7% of meals reimbursed at EIG rate
 - Meal participation increases applied when sites switch to non-pricing
 - Lunch; Y1: 20%, Y2: 17% | Breakfast; Y1: 15%, Y2: 12%

Summary of Projected SSA Required Funding

Biennium	Sum of USDA Pay	Sum of State Pay
2023-25	433,173,046.21	67,597,967.13
2025-27	603,762,894.86	64,223,357.12
2027-29	633,474,518.49	67,509,939.64
2029-31	665,130,563.73	71,002,044.82
Total	2,335,541,023.29	270,333,308.71

Year	Sum of USDA Pay	Sum of State Pay
2024	151,282,144.88	39,364,372.42
2025	281,890,901.33	28,233,594.71
2026	298,286,474.49	31,720,143.96
2027	305,476,420.37	32,503,213.16
2028	312,782,574.04	33,319,275.17
2029	320,691,944.45	34,190,664.47
2030	328,607,443.49	35,064,239.76
2031	336,523,120.24	35,937,805.06
2032	344,931,935.66	36,877,351.20
Total	2,680,472,958.95	307,210,659.91

