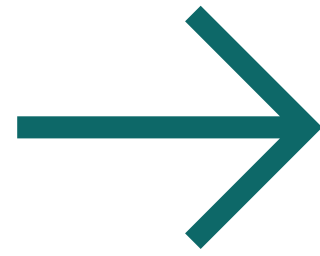


Social Impact Trends



Can we create a greater and more sustainable social impact across Marion and Polk Counties?



1

Lack of Integrated and Coordinated Resources

2

No One Organization Can Solve it All

3

Strong Economies Do Not Equal Strong Communities

4

Sustainable Outcomes are Community Owned

The U.S. Playbook to Address Social Determinants of Health

Social Determinants of Health



3 PILLARS

Expand Data Gathering and Sharing

Support Flexible Funding for Social Needs

Support Backbone Organizations

THE U.S. PLAYBOOK TO ADDRESS SOCIAL DETERMINANTS OF HEALTH

DOMESTIC POLICY COUNCIL
OFFICE OF SCIENCE AND TECHNOLOGY POLICY

NOVEMBER 2023



Project Priority



Social Impact

Reducing Social Service Costs



STABILITY

INTERVENTION

Critical Services/Basic Needs, Intensive Case Management, Respite Walk-in, Permanent Housing

HEALTH

PREVENTION

Integrated Support Network, Amplifying Community Strengths, Barrier Reduction, Broad Range of Supports

WELL-BEING

ASSET BUILDING

Academic and Career Resources, Healthy Aging Programs, Family Engagement Opportunities, Childcare, Youth Development, Community Resource Navigation

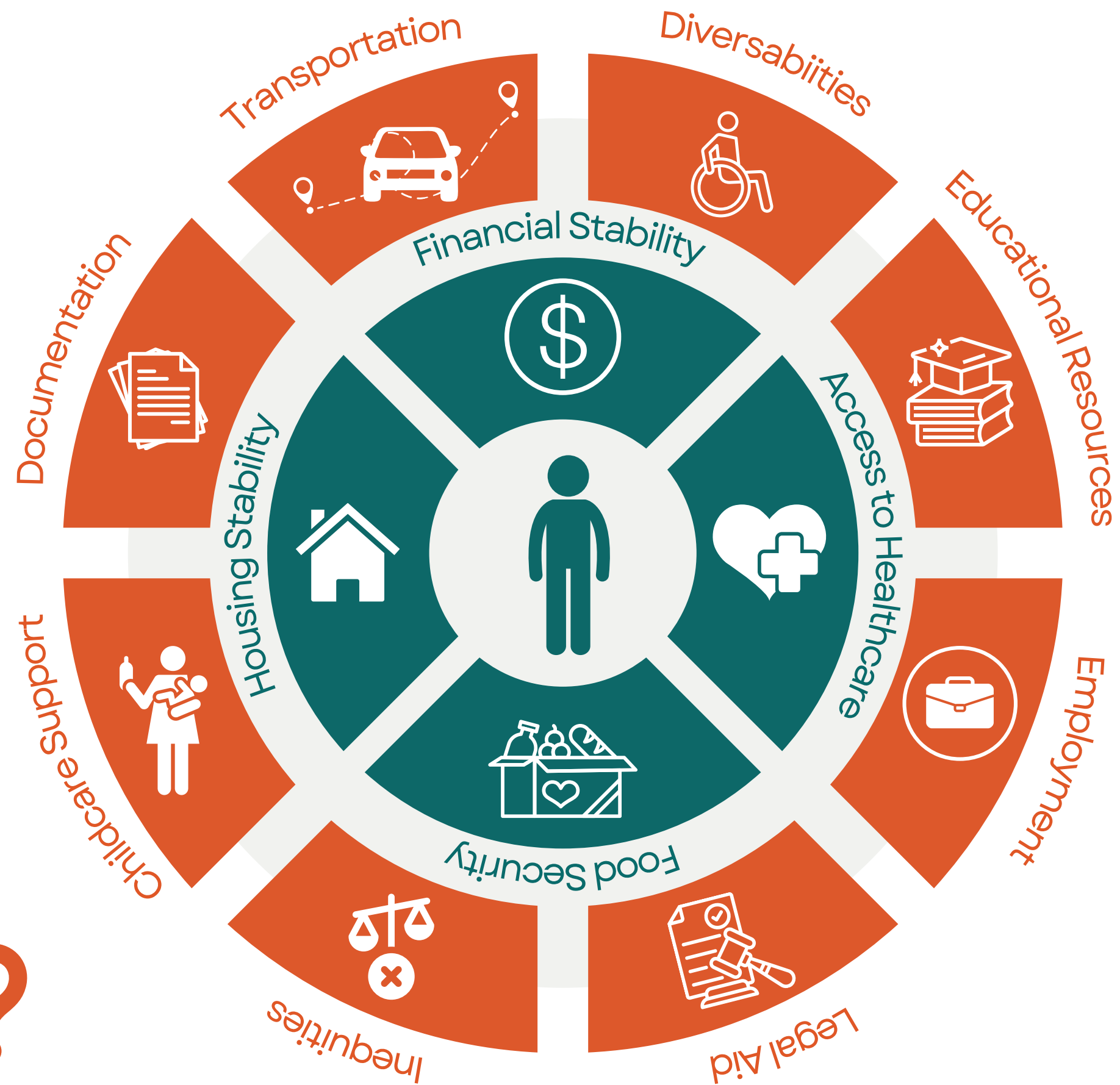
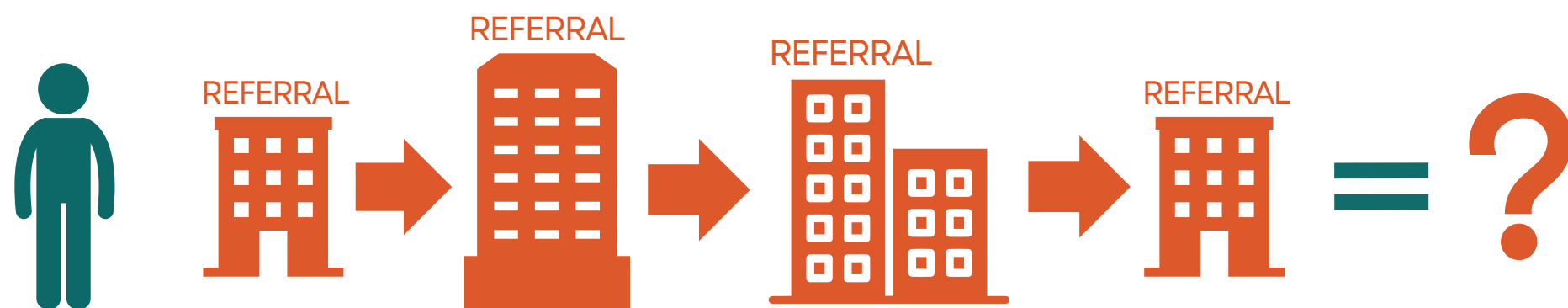


Social Circumstances

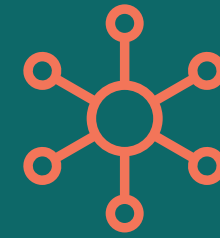
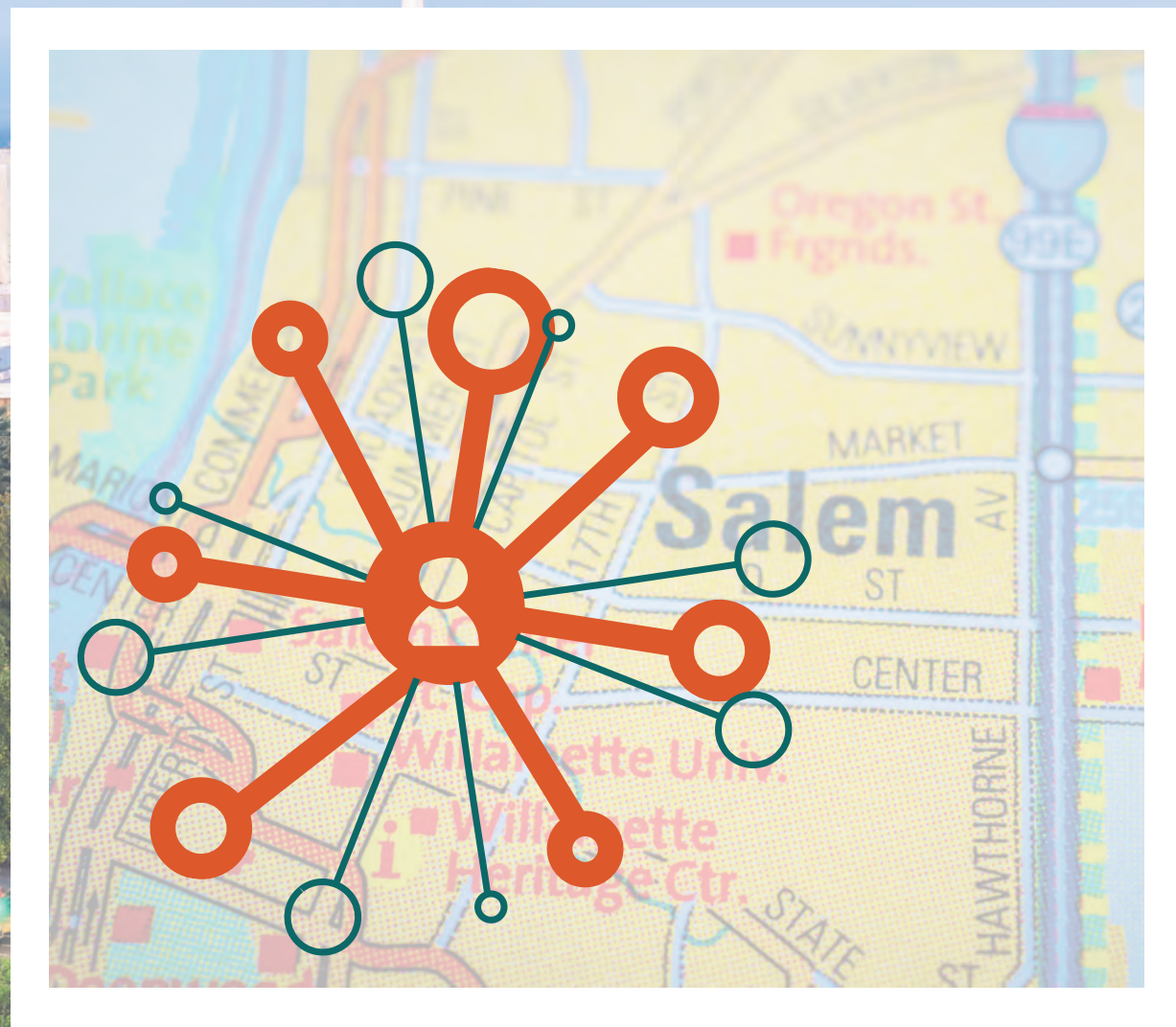
BASIC & ESSENTIAL NEEDS FOR INDIVIDUALS & FAMILIES

CHALLENGES & BARRIERS TO SECURING SUPPORT

When Challenges Compound



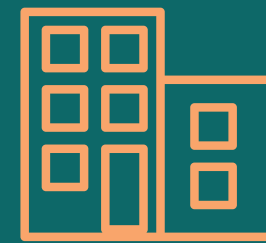
Building Resiliency



Hub & Spoke



**Cross-Sector
Collaboration**



Co-Location



Person-Centered



Sustainable



Collective Impact

Center for Hope and Safety



IKE BOX

Transit Station



Salem First Presbyterian Church



Statesman Journal Building

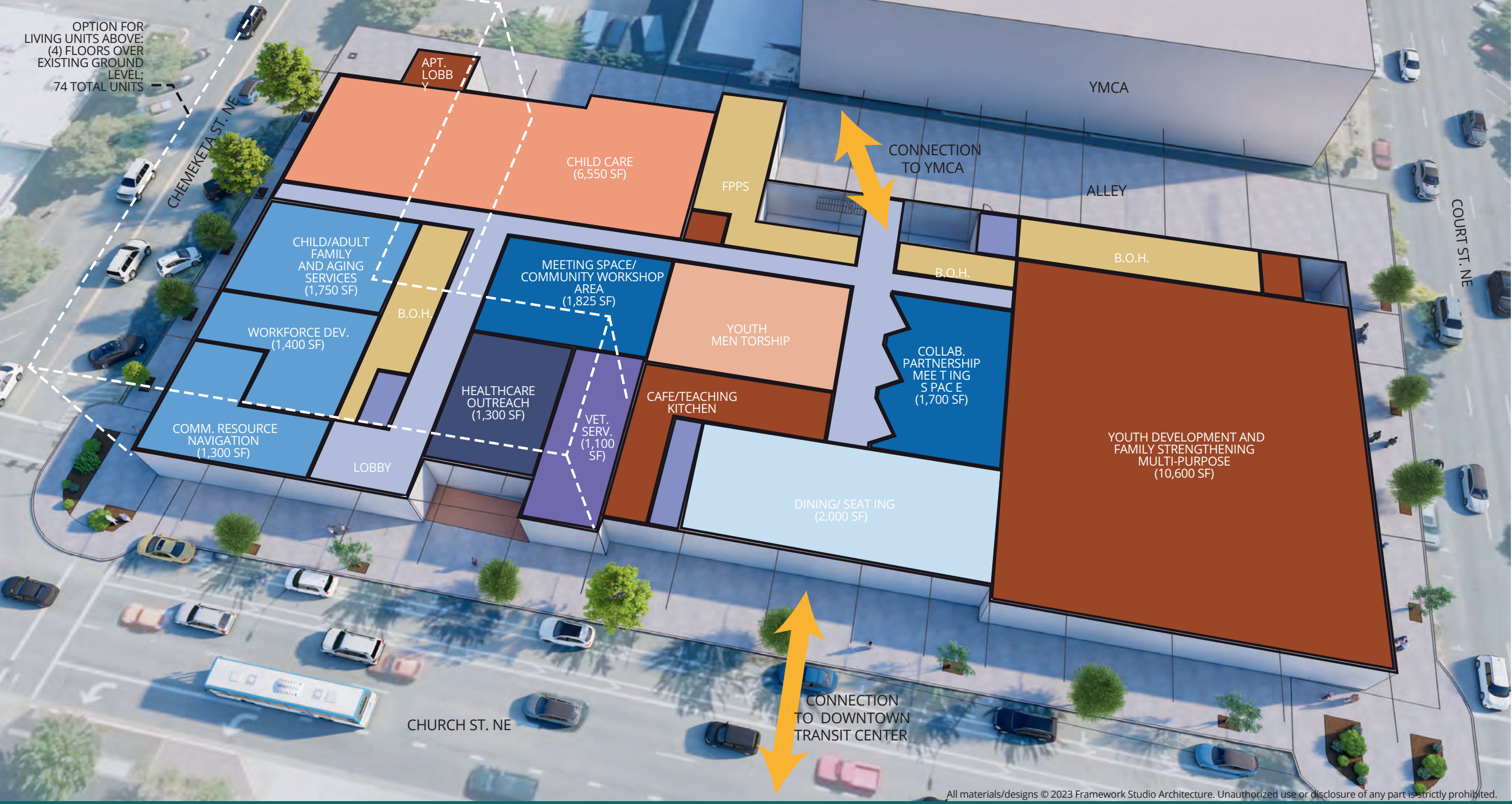


Flagship YMCA



Courtney Place Veterans Housing

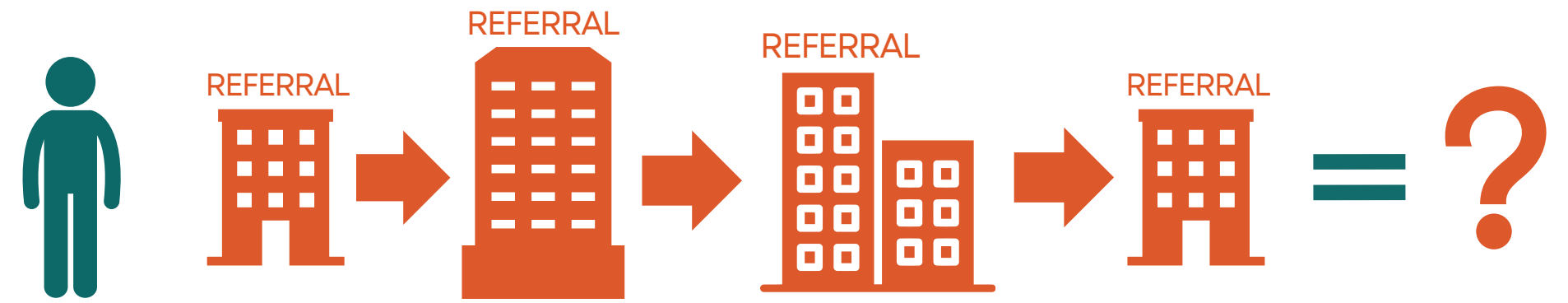
Shared Infrastructure



Boys and Girls Club | CASA | Catholic Community Services | Chemeketa Community College
 Community Resource Trust | Family Building Blocks | Garten Services | Isaac's Room / IKE Box | Liberty House
 Mid-Willamette Valley Community Action Agency | Oregon Department of Human Services | Salem Vet Center
 Salem Health | Salem Leadership Foundation | Willamette Health Council | YMCA

OPTION FOR LIVING UNITS ABOVE:
(4) FLOORS OVER EXISTING
GROUND LEVEL; 74 TOTAL UNITS





Removing Barriers
Accelerating Outcomes



Social Impact Success



INDIVIDUAL & FAMILY IMPACT



COMMUNITY IMPACT

