

Hospital Discharges

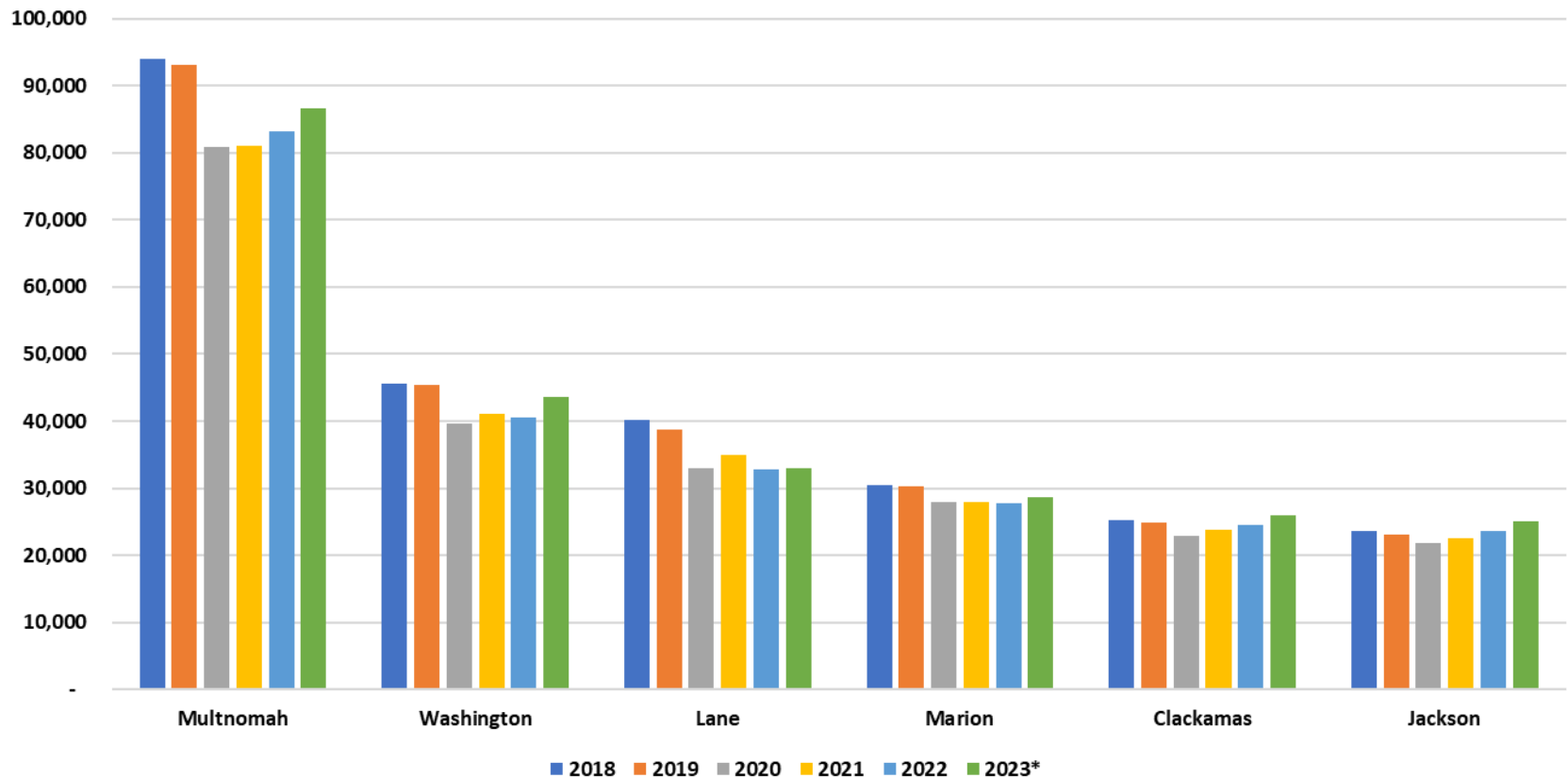
Summary: Based on what we're seeing in the hospital discharge data there is no definitive evidence of a substantial effect DIPP phase 1 and/or 2 had on easing crowded hospitals.

Source: Office of Health Analytics Databank 2007 - 2023Q2 (Databank dataset contains monthly data for Oregon's 60 acute care hospitals on a multitude of hospital financial and utilization key indicators including Discharges)

Excludes counties not found in DIPP Phase 1 and 2 listed Hospitals

	Total Discharges All Payor						
County	2018	2019	2020	2021	2022	2023*	2023 Actual
Multnomah	93,964	93,027	80,930	81,093	83,179	86,594	43,297
Washington	45,558	45,334	39,575	41,017	40,591	43,620	21,810
Lane	40,154	38,697	32,914	34,955	32,828	33,066	16,533
Marion	30,552	30,371	27,933	27,962	27,740	28,644	14,322
Clackamas	25,272	24,949	22,830	23,874	24,602	25,932	12,966
Jackson	23,544	23,142	21,803	22,545	23,650	25,064	12,532
Benton	9,195	9,150	9,145	9,128	8,925	9,258	4,629
Josephine	7,034	6,772	6,555	6,616	6,488	6,414	3,207
Douglas	6,655	6,539	6,222	6,625	6,219	6,256	3,128
Coos	6,115	6,135	5,868	5,728	5,669	6,284	3,142
Yamhill	5,905	5,713	4,930	5,329	5,416	5,692	2,846
Klamath	4,956	4,803	4,163	4,481	4,701	4,544	2,272
Linn	4,671	4,803	4,546	4,491	4,273	4,418	2,209
Umatilla	2,811	2,631	2,534	2,876	3,017	2,678	1,339
Clatsop	2,848	2,932	2,361	2,437	2,444	2,310	1,155
Lincoln	2,068	2,175	2,206	2,203	2,135	2,130	1,065
#N/A	2,001	1,991	1,665	1,572	1,412	1,368	684
Hood River	1,570	1,455	1,287	1,336	1,466	1,442	721
Union	1,323	1,248	1,224	1,309	1,369	1,418	709
Tillamook	1,247	1,327	1,188	1,078	993	932	466
Jefferson	698	704	704	737	741	748	374
Crook	626	583	565	570	584	676	338
Curry	580	489	563	625	603	552	276
Wallowa	582	586	513	520	528	410	205
Harney	414	372	294	359	424	354	177

Annual Hospital Discharges for **Top 6 Counties

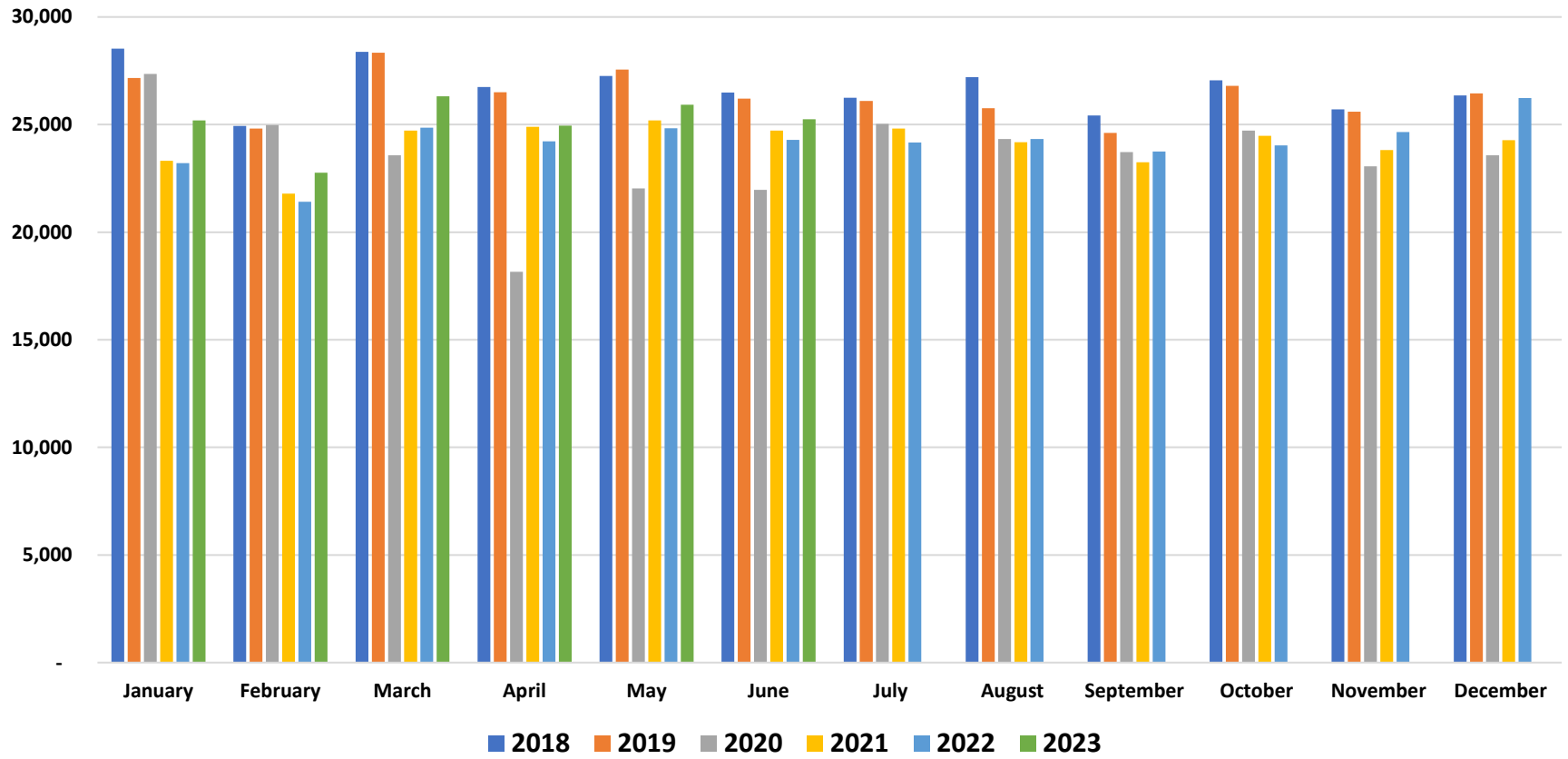


*2023 Annualized; 2023 data contains January - June

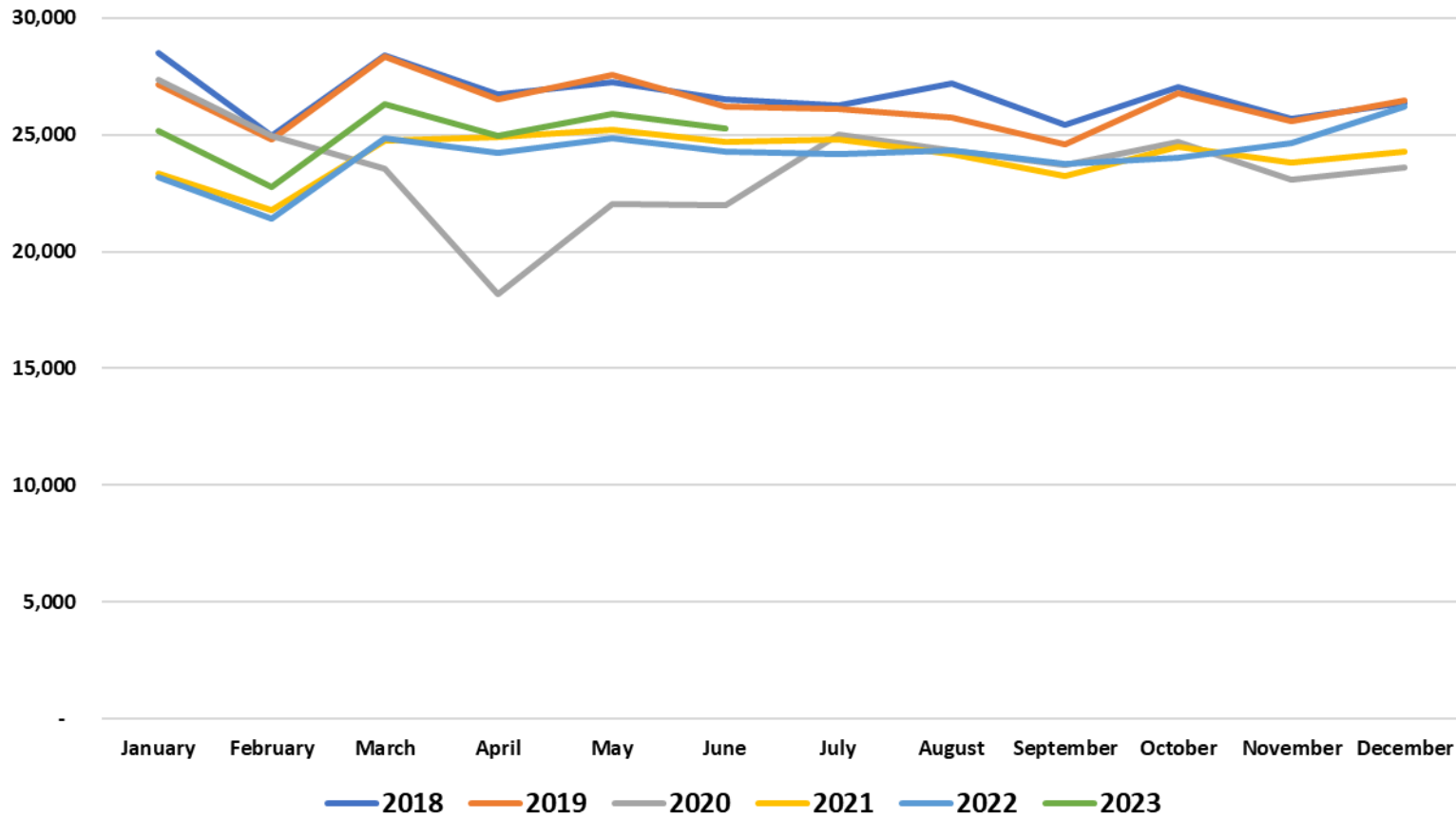
**Top 6 Counties are counties with 20k+ annual discharges (remaining counties have < 10k discharges)

Excludes discharges form Hospitals not listed in Phase 1 & 2 data												
	Total Discharges All Payor											
Year	January	February	March	April	May	June	July	August	September	October	November	December
2018	28,528	24,933	28,384	26,751	27,256	26,496	26,250	27,206	25,423	27,050	25,713	26,353
2019	27,170	24,815	28,336	26,504	27,561	26,201	26,100	25,763	24,619	26,800	25,604	26,455
2020	27,349	24,977	23,576	18,159	22,039	21,973	25,032	24,335	23,722	24,717	23,062	23,577
2021	23,318	21,787	24,726	24,893	25,199	24,722	24,822	24,185	23,246	24,477	23,814	24,277
2022	23,205	21,412	24,862	24,224	24,828	24,284	24,168	24,334	23,754	24,033	24,658	26,235
2023	25,192	22,767	26,317	24,957	25,920	25,249						

Hospital Discharges by Month

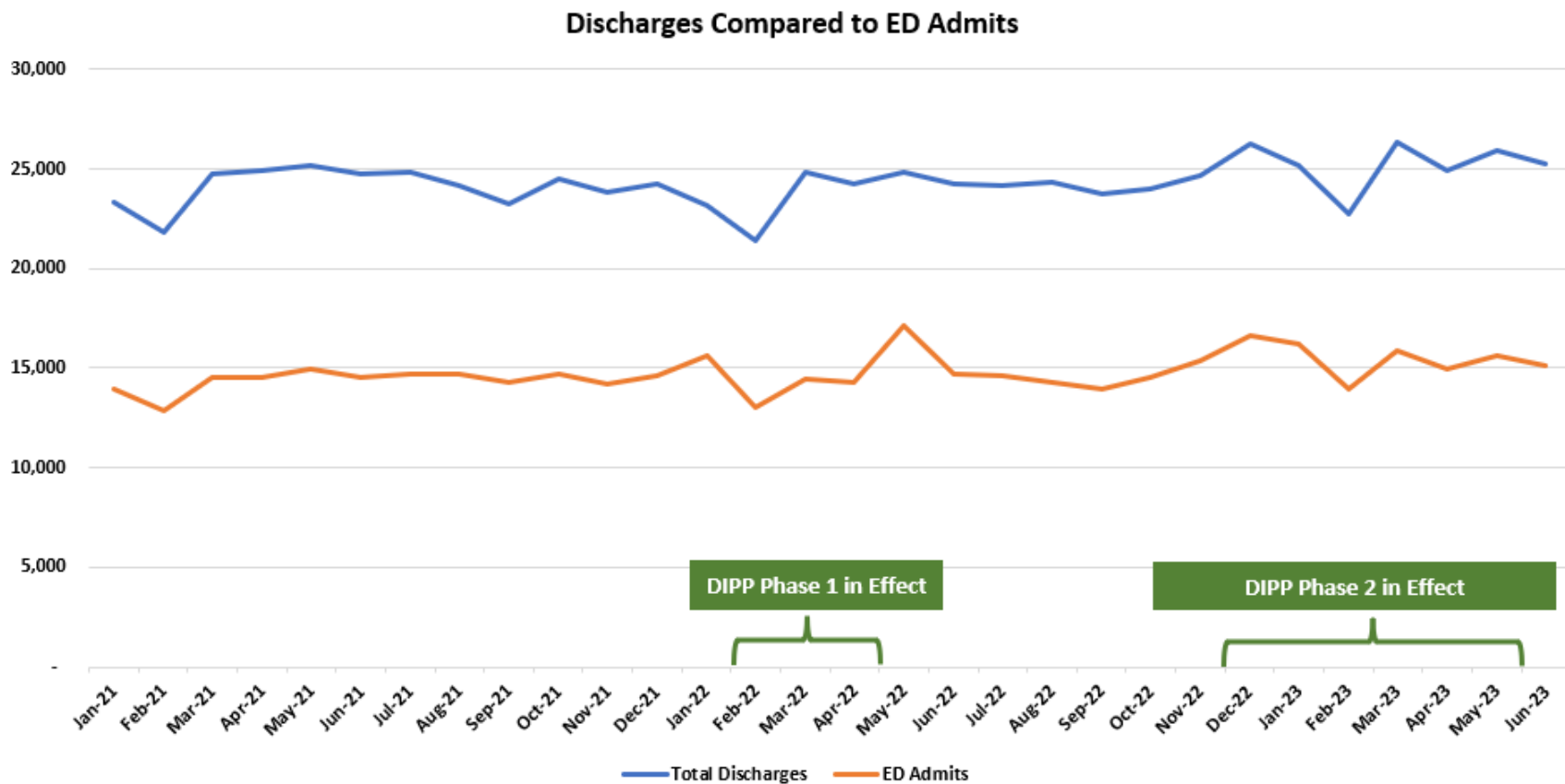


Hospital Discharges by Month



*Excludes discharges form Hospitals not
listed in Phase 1 & 2 data*

Month/Year	Total Discharges	ED Admits
Jan-21	23,318	13,949
Feb-21	21,787	12,893
Mar-21	24,726	14,499
Apr-21	24,893	14,520
May-21	25,199	14,919
Jun-21	24,722	14,532
Jul-21	24,822	14,713
Aug-21	24,185	14,717
Sep-21	23,246	14,267
Oct-21	24,477	14,740
Nov-21	23,814	14,166
Dec-21	24,277	14,630
Jan-22	23,205	15,657
Feb-22	21,412	13,025
Mar-22	24,862	14,436
Apr-22	24,224	14,327
May-22	24,828	17,138
Jun-22	24,284	14,739
Jul-22	24,168	14,616
Aug-22	24,334	14,302
Sep-22	23,754	13,918
Oct-22	24,033	14,576
Nov-22	24,658	15,415
Dec-22	26,235	16,596
Jan-23	25,192	16,228
Feb-23	22,767	13,923
Mar-23	26,317	15,865
Apr-23	24,957	14,970
May-23	25,920	15,662
Jun-23	25,249	15,162



NF Discharges

Summary: Based on what we're seeing in the NF discharge data there is no definitive evidence of a substantial effect DIPP phase 1 and/or 2 had on easing crowded nursing facilities.

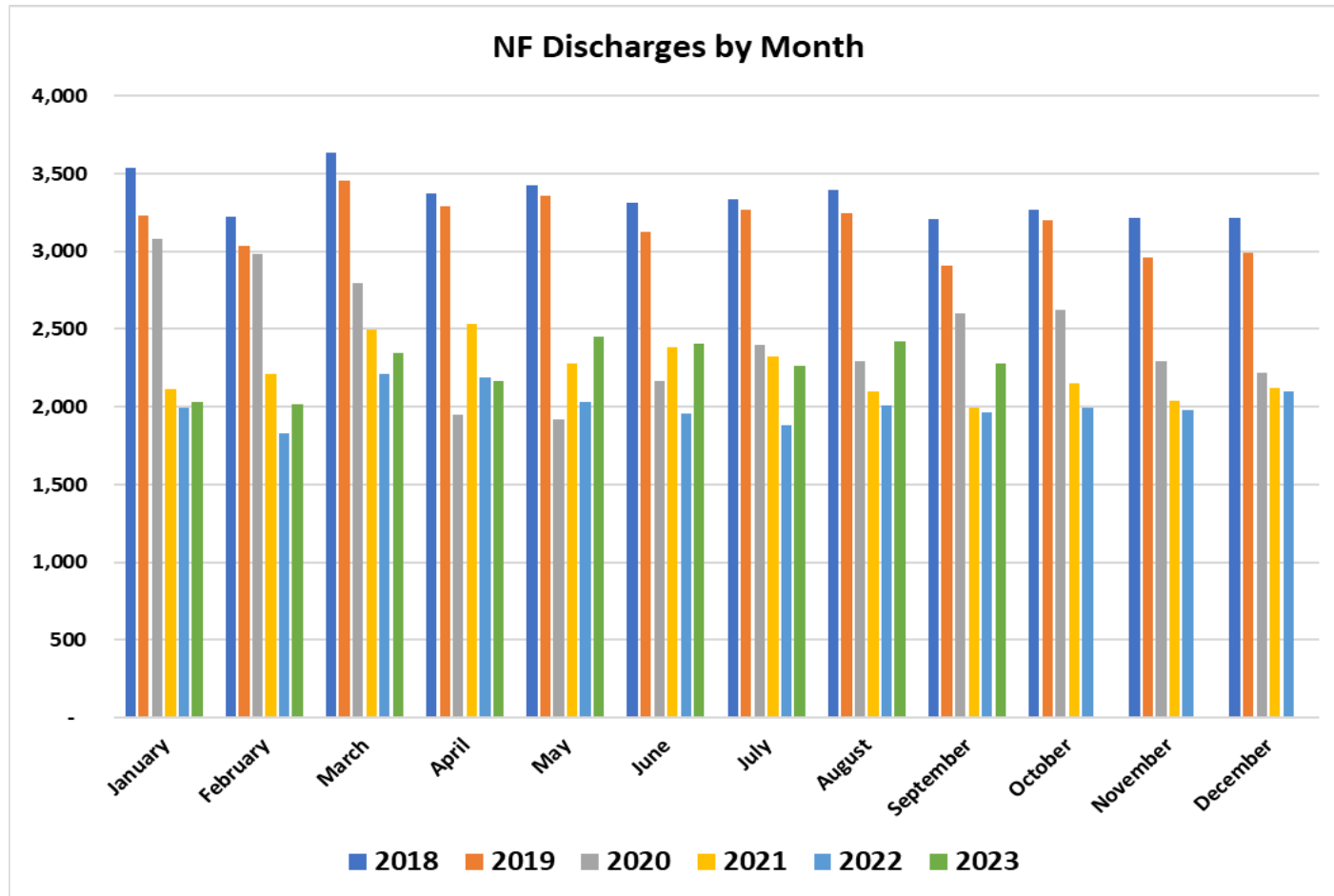
Source: MDS Data from CMS

Payor Groups are assumed based on type of resident ID number

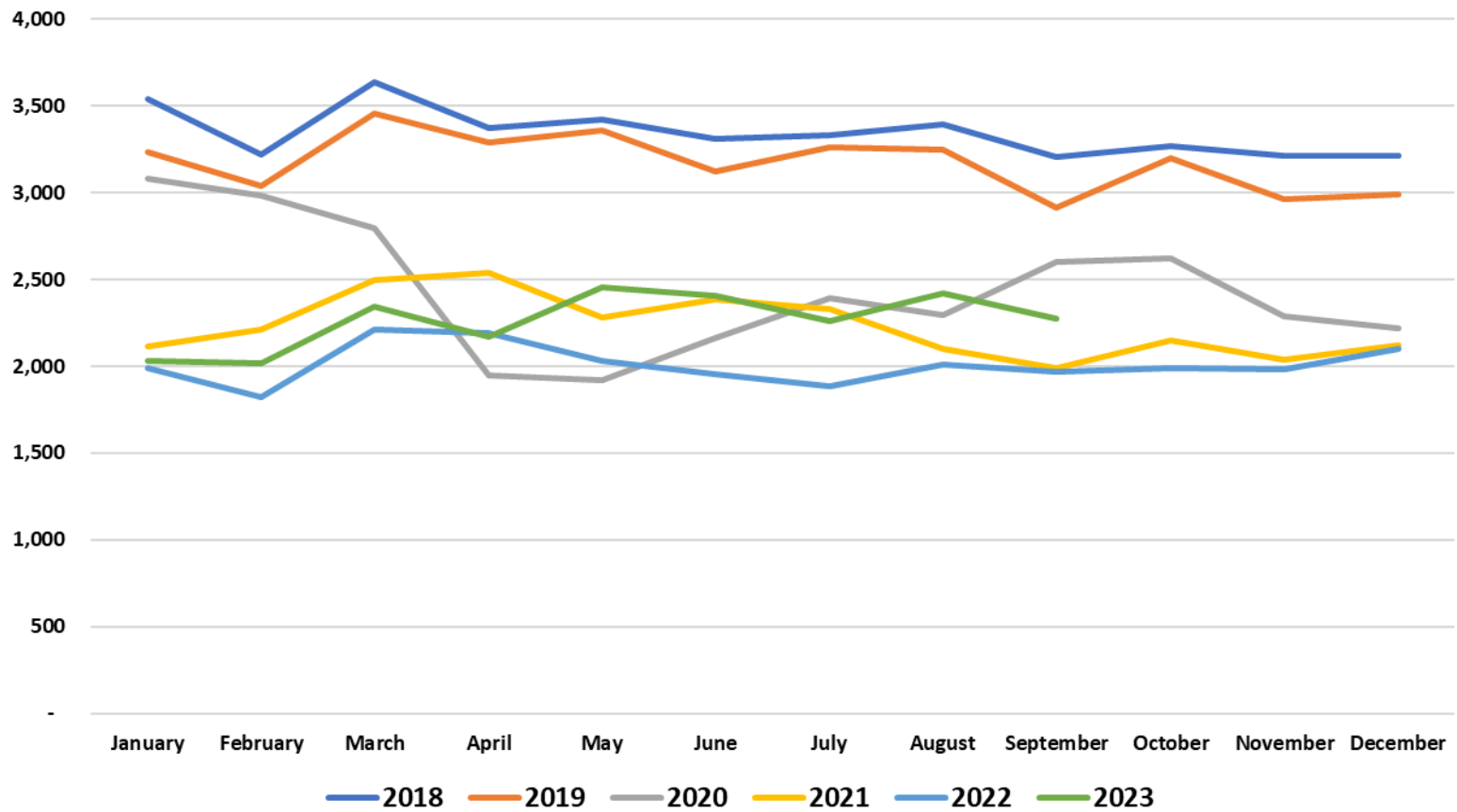
Definitions include

- Likely Dual = Has an identifiers that appear to be from Medicare & Medicaid
- Likely Medicaid = Has an identifier that appears to be from Medicaid
- Likely Medicare = Has an identifier that appears to be from Medicare
- Likely Private Or Unknown = Does not have identifier that appears to be from Medicare or Medicaid

	Total NF Admits All Payor											
Year	January	February	March	April	May	June	July	August	September	October	November	December
2018	3,539	3,220	3,636	3,375	3,425	3,309	3,332	3,393	3,207	3,266	3,213	3,216
2019	3,231	3,036	3,458	3,289	3,359	3,124	3,264	3,245	2,911	3,202	2,962	2,988
2020	3,083	2,981	2,796	1,948	1,920	2,166	2,395	2,295	2,598	2,622	2,291	2,221
2021	2,113	2,214	2,499	2,537	2,282	2,383	2,327	2,098	1,991	2,152	2,040	2,121
2022	1,993	1,826	2,209	2,190	2,034	1,957	1,882	2,007	1,967	1,991	1,980	2,100
2023	2,031	2,016	2,343	2,168	2,453	2,405	2,262	2,418	2,276			

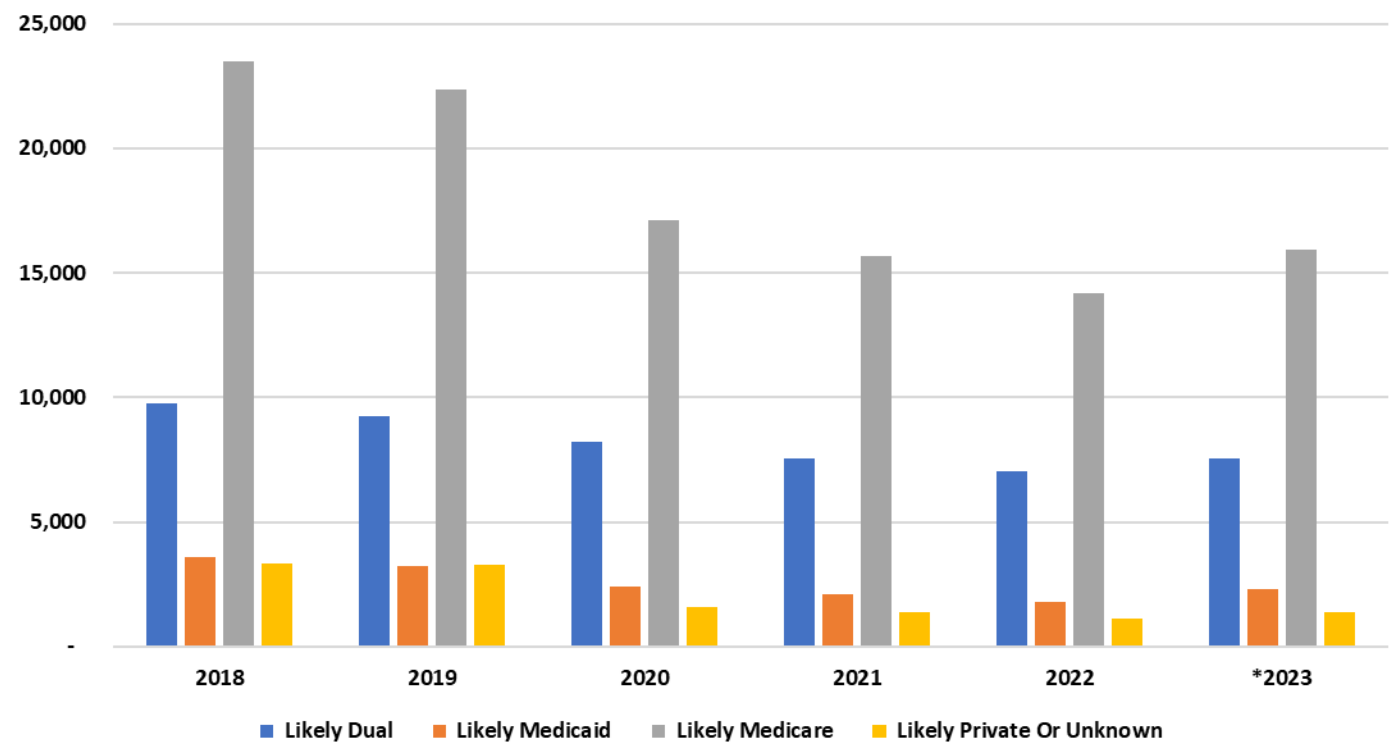


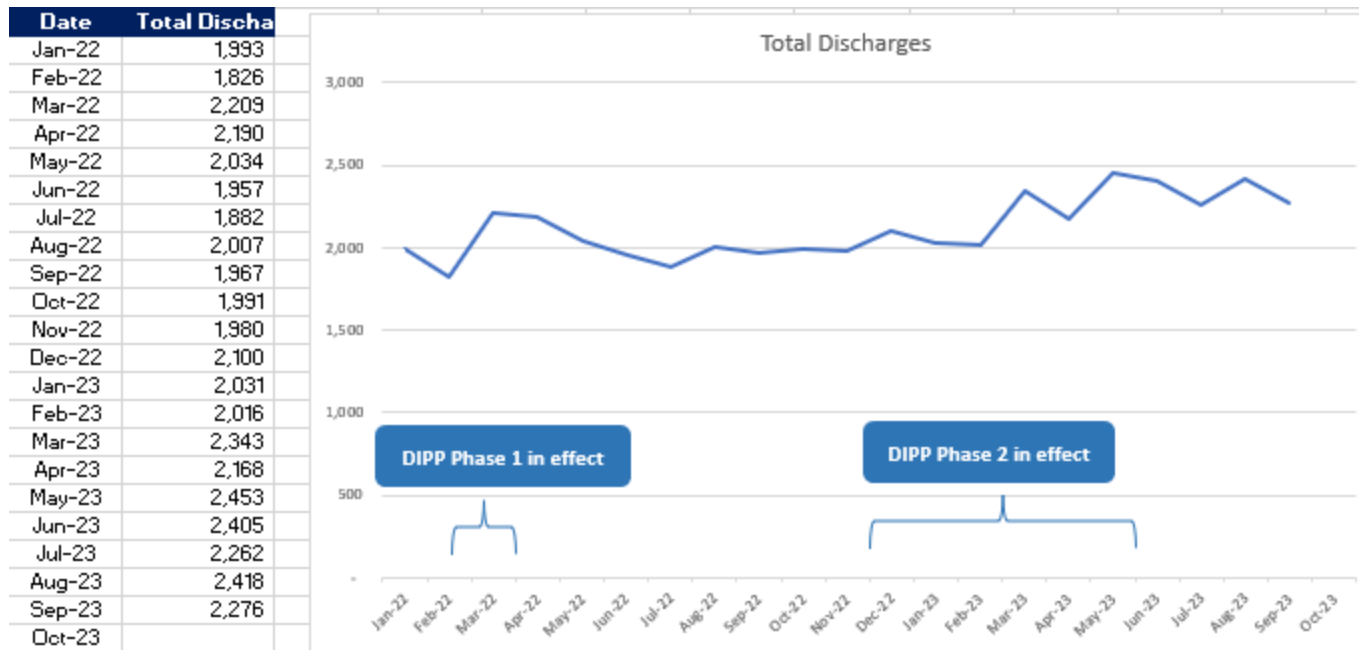
NF Discharges by Month



	Year	Likely Dual	Likely Medicaid	Likely Medicare	Likely Private Or Unknown
	2018	9,744	3,588	23,478	3,321
	2019	9,228	3,220	22,336	3,285
	2020	8,228	2,421	17,098	1,569
	2021	7,571	2,117	15,668	1,401
	2022	7,044	1,812	14,173	1,107
	*2023	7,552	2,295	15,943	1,373
	*2023 Annualized				

Discharges by Payor Type





NF Admits

Summary: Based on what we're seeing in the NF admit data there is no definitive evidence of a substantial effect DIPP phase 1 and/or 2 had on increasing or decreasing NF admits.

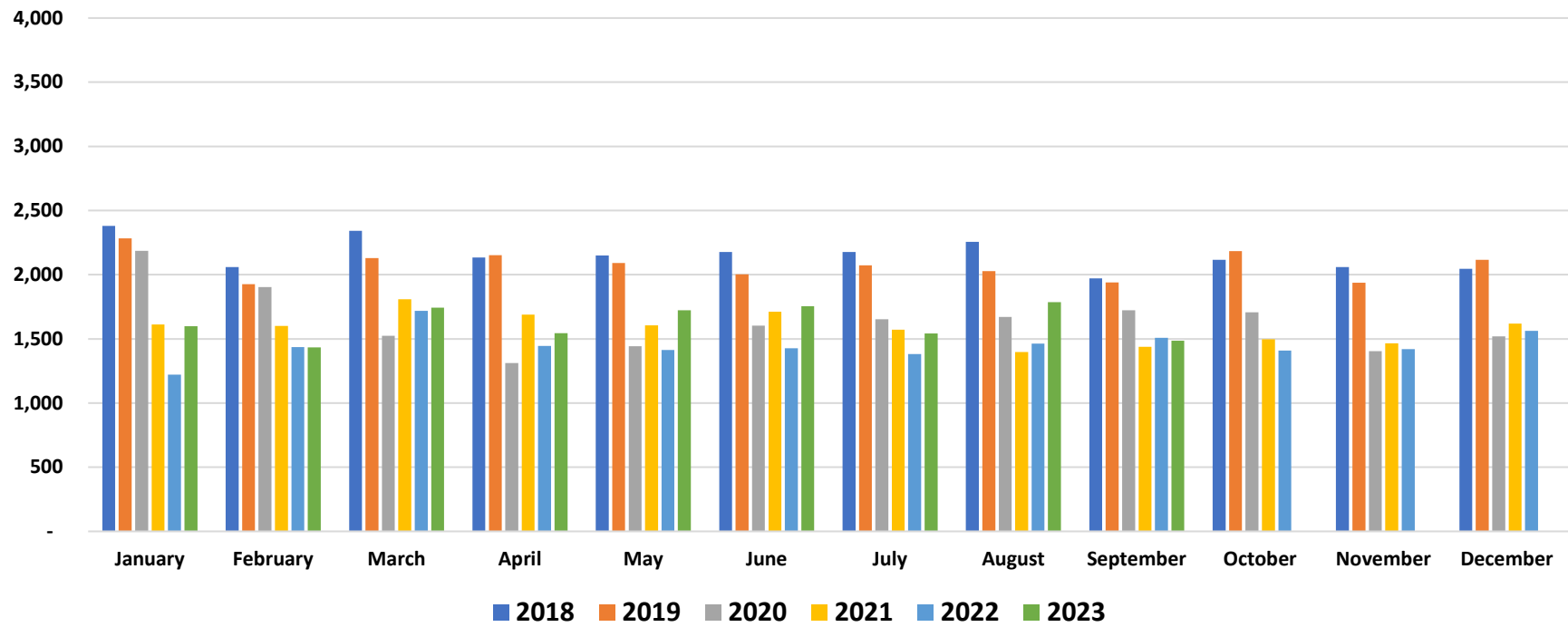
Source: MDS Data from CMS

Payor Groups are assumed based on type of resident ID number

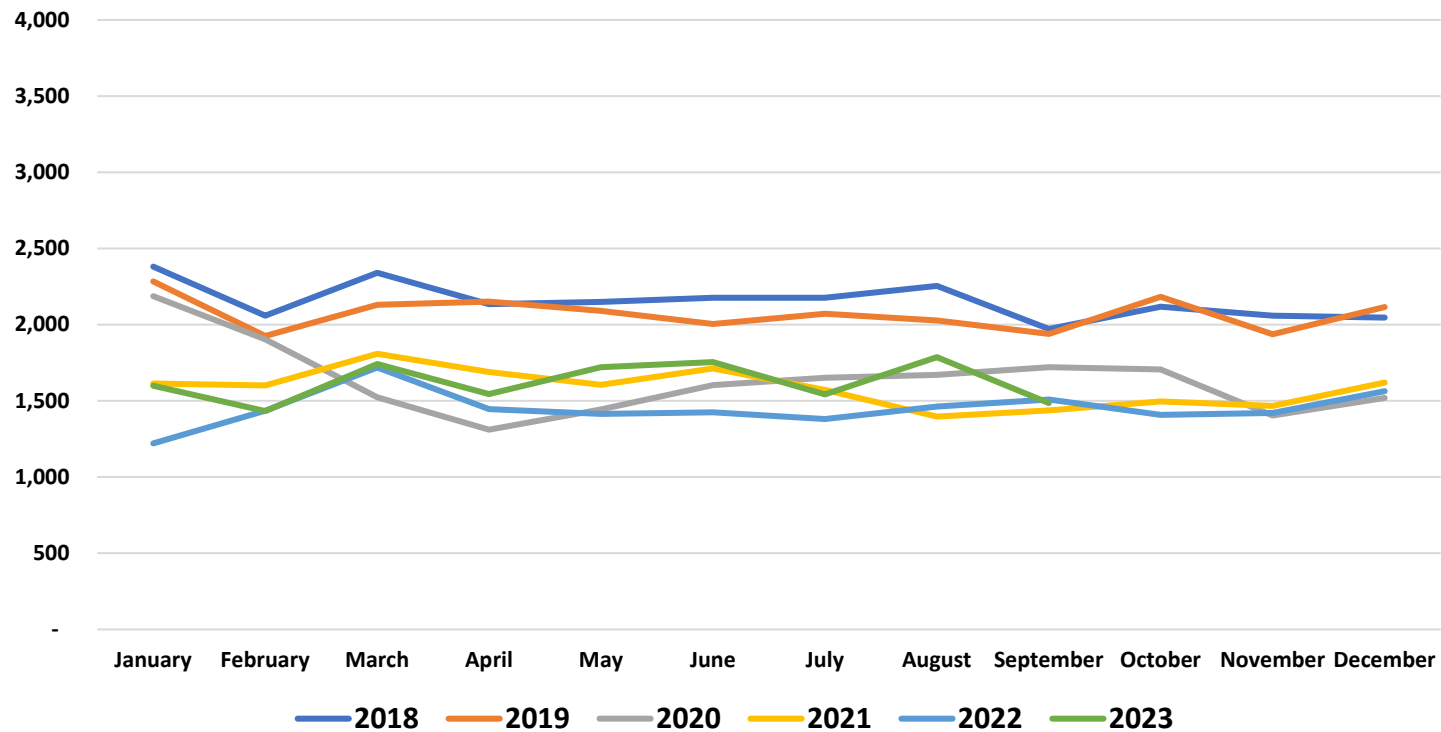
Definitions include

- Likely Dual = Has an identifier that appears to be from Medicare & Medicaid
- Likely Medicaid = Has an identifier that appears to be from Medicaid
- Likely Medicare = Has an identifier that appears to be from Medicare
- Likely Private Or Unknown = Does not have identifier that appears to be from Medicare or Medicaid

NF Admits by Month



NF Admits by Month



	Year	Likely Dual	Likely Medicaid	Likely Medicare	Likely Private Or Unknown
	2018	5,058	2,026	16,306	2,478
	2019	4,720	1,953	15,748	2,443
	2020	4,314	1,508	12,539	1,284
	2021	3,981	1,291	12,426	1,321
	2022	3,697	1,166	11,499	1,042
	*2023	4,087	1,509	12,544	1,340
*2023 Annualized					

Admits by Payor Type

