



Mid-Willamette Valley

COMMUNITY ACTION

Compassion in Motion

Support For Those Experiencing Homelessness



Assistance For Improving Home Weatherization



Resources For Child Care Seekers & Providers



Help For Those Unable To Pay Energy Bills



Nutrition Resources For Child Care Providers



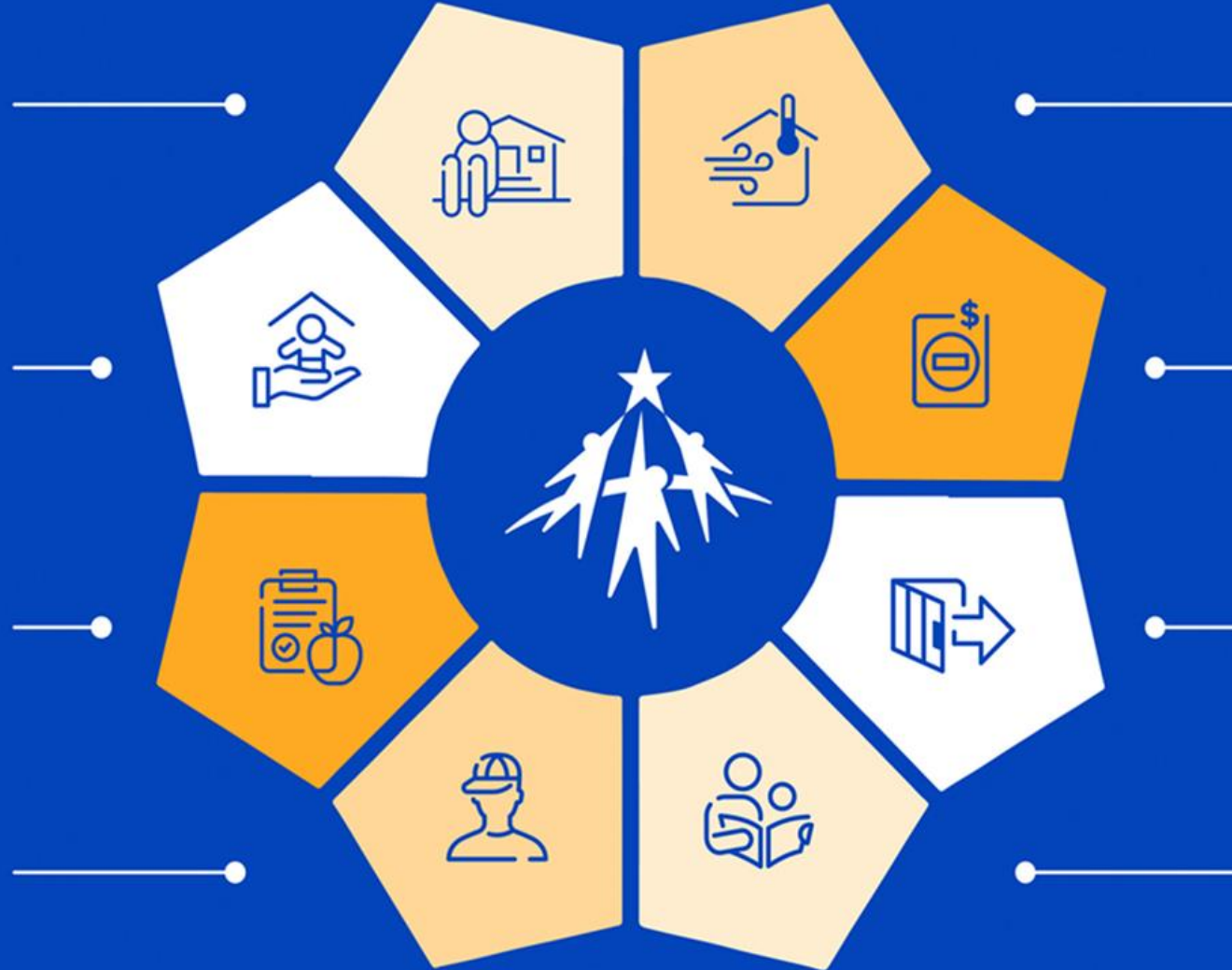
Help For Those Exiting Incarceration



Support For Homeless And At-Risk Teens



Resources For Early Childhood Development (Head Start)



Brief History of Homeless Services

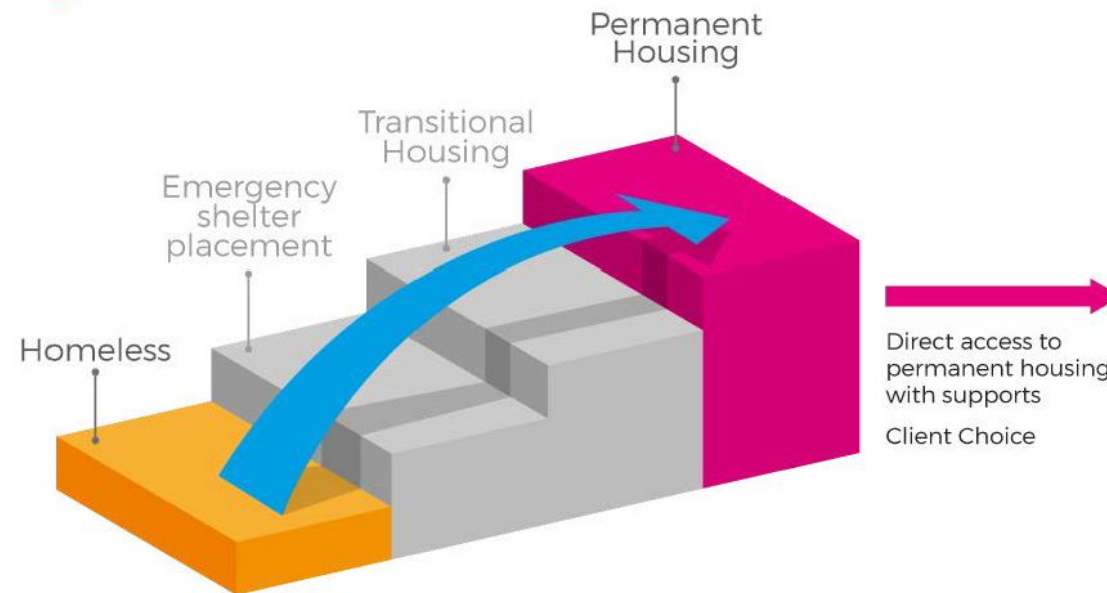
- Urban concentration of poverty in the late 19th century.
- **Poor Farm** Model (1890-1920).
- Wave of **Institutionalization** (1920-1960).
- **Community Mental Health Act**, 1963.
- Height of **Great Society** Programs 1964-1979.
- Crisis of the 1980s, and decline of social safety net.
- 1980s: Politics of Homelessness: Numbers, Solutions, conversations concerning behaviors, Worthy Poor vs. Enabling, War on Drugs.
- 1990s-2020: Affordable Housing Crisis era, end of AFDC, central planning at federal level, rise of powerful addictive drugs, methamphetamine, opioids, synthetics.

Brief History of Homeless Services

- 1987: [McKinney-Vento Act](#): Competitive Funding.
- 1994: HUD created the [Continuum of Care System](#).
- 2005: First national [Point in Time Counts](#), information collected by HUD and reported to Congress in the AHAR (2007).
- 2009: HEARTH Act: Reauthorization, consolidation of grants, ESG Funds.
- 2000-2010: Era of Ten Year Plans; decline of Transitional Housing.
- 2012: [Opening Doors](#) Era: Veterans by 2015; Chronic by 2017; Families and Youth by 2020.
- 2015-2020 in Oregon, growth of EHA-SHAP, expansion in OHCS homeless programs.

Brief History of Homeless Services

Staircase model VS. Housing First model



Reference: Sam Tsemberis, Founder, Pathways to Housing

The Housing Front Lines

- Oregon increase of 22 percent from 2020 to 2022.
- 42 per 100,000 (fourth greatest in the nation).
- 62 percent are unsheltered (fourth greatest).
- 59 percent of homeless families with children are unsheltered.
- ~20K homeless, but something close to 5,200 permanent shelter beds.
- Roughly 1 in 4 shelter beds are empty.
- 44 percent are chronically homeless (absolute worst in the nation).
- Housing cost a prime driver. Two bedroom in 2012 was commonly \$600-800 in non-Metro in 2012; today it's closer to \$1,500. Rise of Rent Burden.

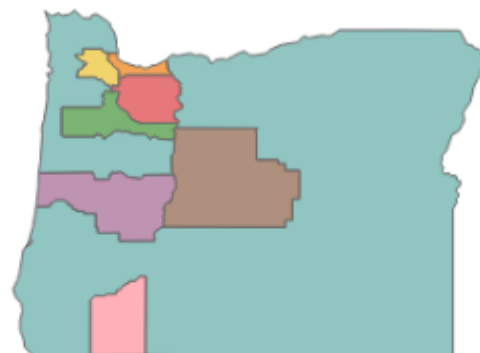
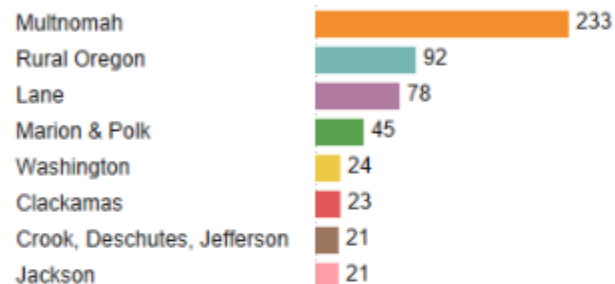
The Housing Front Lines

- Anti-poverty work vs. homeless work.
- Migration from self-sufficiency to harm reduction, emergency services.
- Contradictions in the work:
 - Housing is best solution, sheltering is expensive and takes funds away from housing.
 - Upstream entries exceed downstream exits: 63 percent growth in 6 years.
 - But moral imperative to prevent human suffering, promote dignity.
 - What then do you do in a world of limited resources?
 - Is homelessness a housing problem?
 - Yes: Affordable Housing Stock in short supply, Housing First is solutions focused.
 - No: Complex medical needs, exceptionally complex mental health and substance concerns.
 - So, housing funds alone will not solve the problem. ODHS, OHA must be involved too.
 - Use of blended methods: Transitional Shelter models, programmed housing first systems, etc.

Domicile unknown deaths

Oregon occurrences, preliminary data

Continuums of Care



537
total
unhoused decedents
2022 year-to-date
(Jan-Dec)

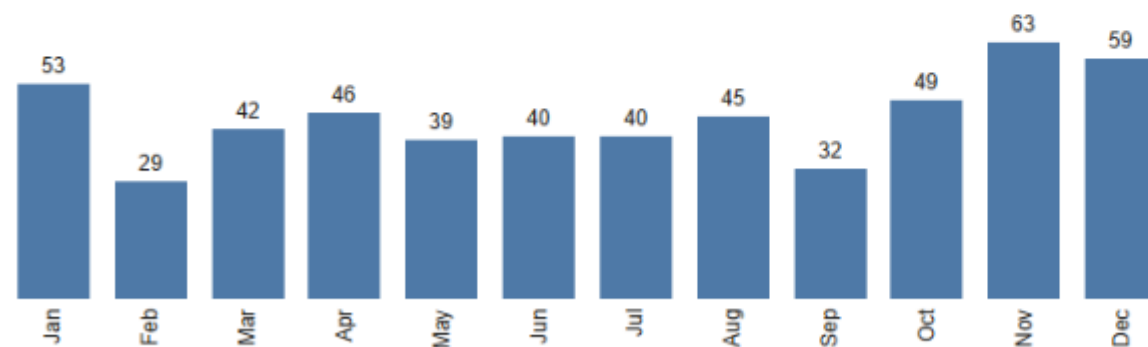
Choose a year:

- 2022
- 2023

Choose a geography:

- HSPR regions
- Continuums of Care

Month of death



Notes and definitions

- Preliminary data
- Records being processed

* Asterisks denote data that may be unreliable. See "Notes and definitions" (above), Sex and Rates.



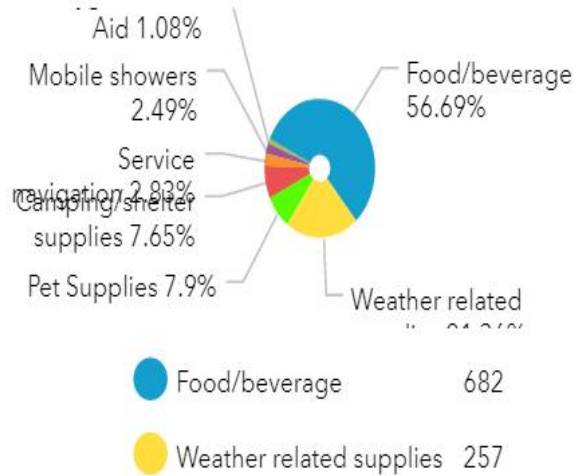
Total Provided Services

1203

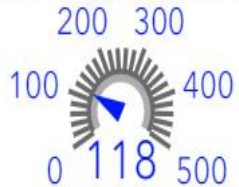
Number of Clients Surveyed

1025

MWVCAA Homeless Outreach Services Metrics

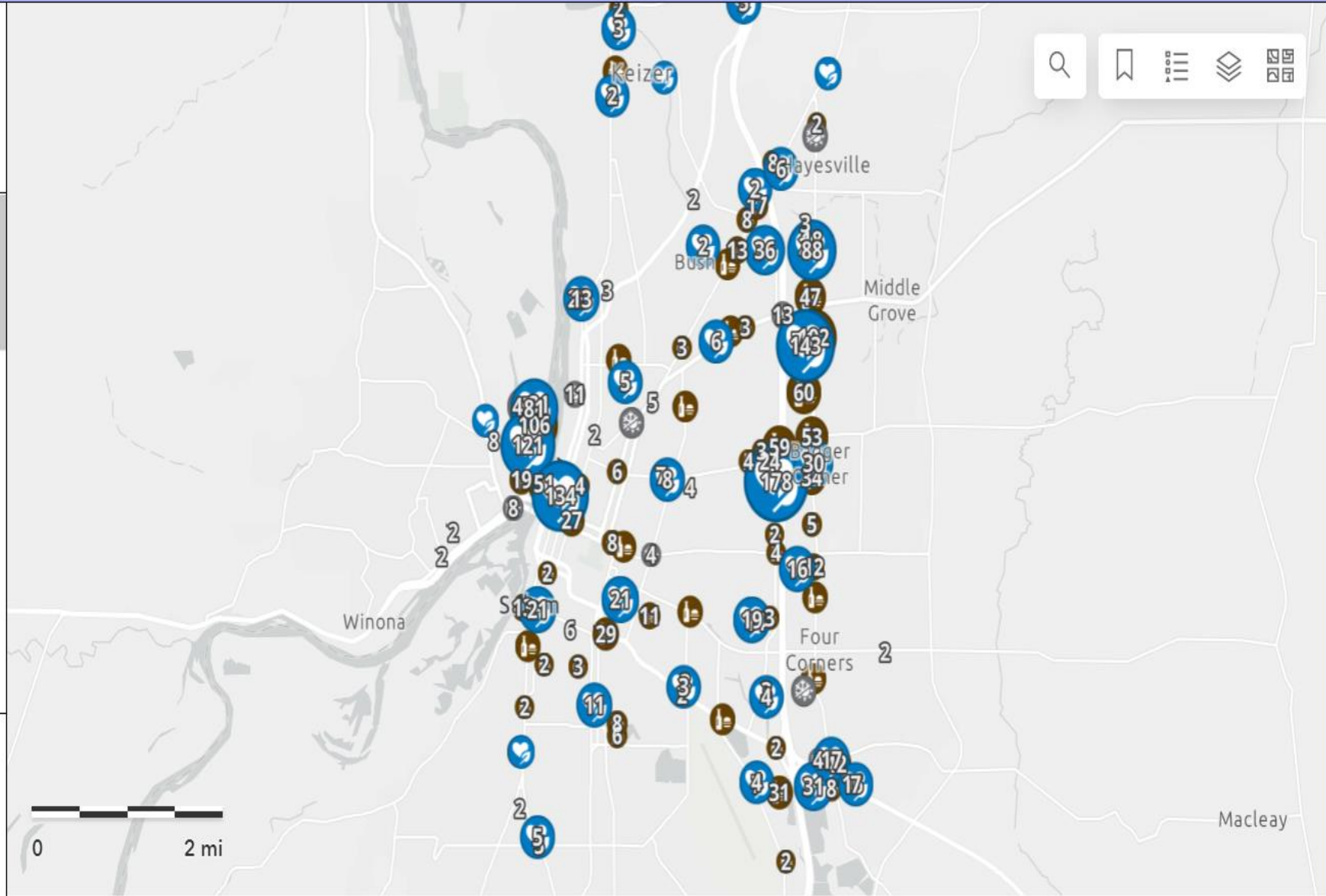


Last 7 Days of



Veterans Served

4



Supportive Housing: Redwood Crossings



community

Supportive Housing: Yaquina Hall



community

Supportive Housing: Sequoia Crossings



COMMUNITY

Sheltering: ARCHES Inn



COMMUNITY

Sheltering: ARCHES Lodge



community

Sheltering: ARCHES Lodge



community

Sheltering: New Navigation Center



COMMUNITY



Day Sheltering



Sheltering: Tanner Project



community

Sheltering: Taylor's House



community

Sheltering: Monmouth House



COMMUNITY

Key 2022-2023 Housing (and other) Accomplishments

- Moved over \$40 million in rental assistance to more than 6,000 households.
- Wildfire Program ends, \$4.5M in assistance to 200 households.
- All Agency programs served 56,175 Oregonians.
- \$28,118,825.23 in direct financial assistance.
- Food services to 6,063 children on daily basis.
- 860 Head Start children served.
- 1,559 shelter bed nights for youth.
- 119 Homes Weatherized; 18,612 persons received Energy Services.
- 28,456 Adult Bed Nights of Shelter in 2022-2023.



Mid-Willamette Valley
COMMUNITY ACTION

Compassion in Motion

Jimmy Jones
Executive Director
Phone: 503-585-6232
Email: Jimmy.Jones@mwvcaa.org

Ashley Hamilton
Chief Program Officer
Phone: 503-399-9080
Email: Ashley.Hamilton@mwvcaa.org