

# ODF Forest Health

November 2023 Priority Issues





# ODF Forest Health



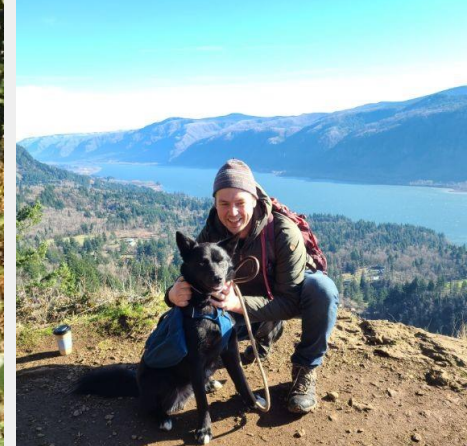
Gabi Ritokova  
Pathology



Christine Buhl  
Entomology



Wyatt Williams  
Invasive species



Sean McKenzie  
Aerial survey

<http://tinyurl.com/ODF-ForestHealth>





# Climate change: Drought

## Beginning of the Water Year

U.S. Drought Monitor  
Pacific Northwest DEWS

September 28, 2021  
(Released Thursday, Sep. 30, 2021)  
Valid 8 a.m. EDT

Drought Conditions (Percent Area)

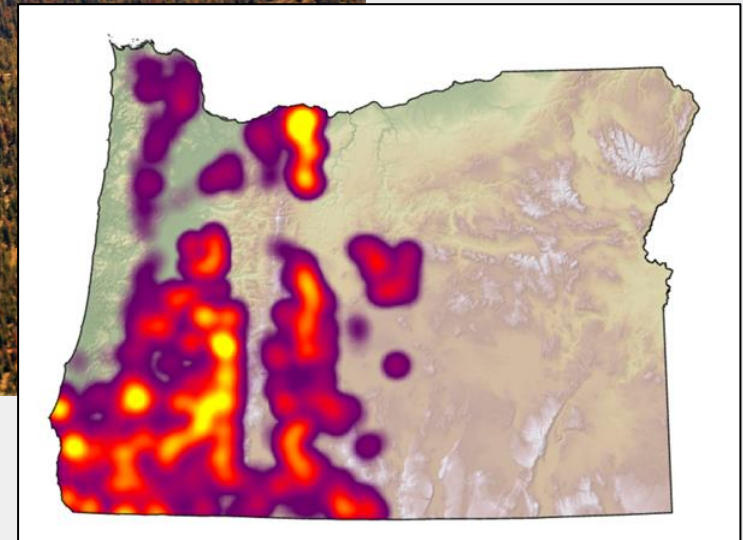
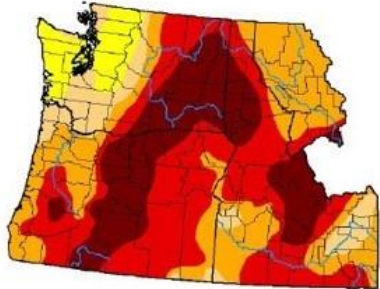
	None	D0-D4	D0-D4	D0-D4	D0-D4	D4
Current	0.00	103.90	90.35	84.83	57.48	24.04
Last Week (9.21.2021)	0.00	103.90	90.35	84.83	57.48	23.52
3 Month Ago (7.1.2021)	4.52	95.38	84.48	60.38	20.36	1.36
Start of Calendar Year (1.1.2021)	36.14	63.90	40.77	27.96	10.74	0.90
Start of Water Year (7.1.2021)	24.70	78.30	54.11	28.83	13.73	0.90
One Year Ago (9.28.2020)	24.70	78.30	54.11	28.83	13.73	0.90

Intensity:

- None
- D0 Abnormally Dry
- D1 Moderate Drought
- D2 Severe Drought
- D3 Extreme Drought
- D4 Exceptional Drought

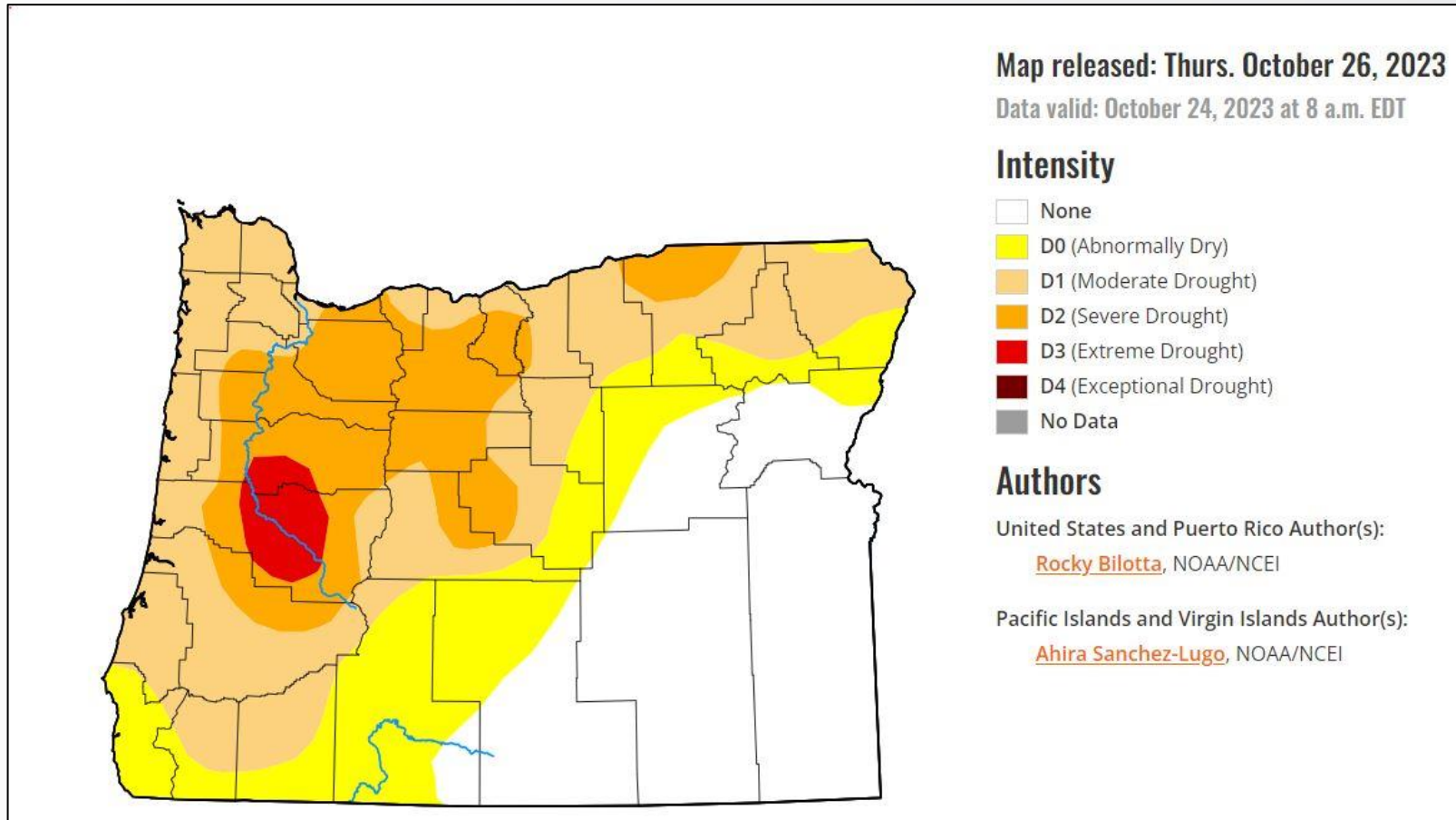
The Drought Monitor focuses on broad-scale conditions. Local conditions may vary. For more information on the Drought Monitor, go to <https://droughtmonitor.unl.edu/About.aspx>

Author:  
Brian Fuchs  
National Drought Mitigation Center





# Climate change: Drought



OWRD monthly drought report: <https://tinyurl.com/drought-report-email>



# Invasive species: Emerald ash borer (EAB)

- Detected June 30, 2022. First occurrence in western U.S.
- Has killed >100 million ash trees in USA. Oregon ash threatened.
- Oregon's response and preparations ongoing: **EAB Task Force**

Now:



Ankeny NWR, Photo: ODF

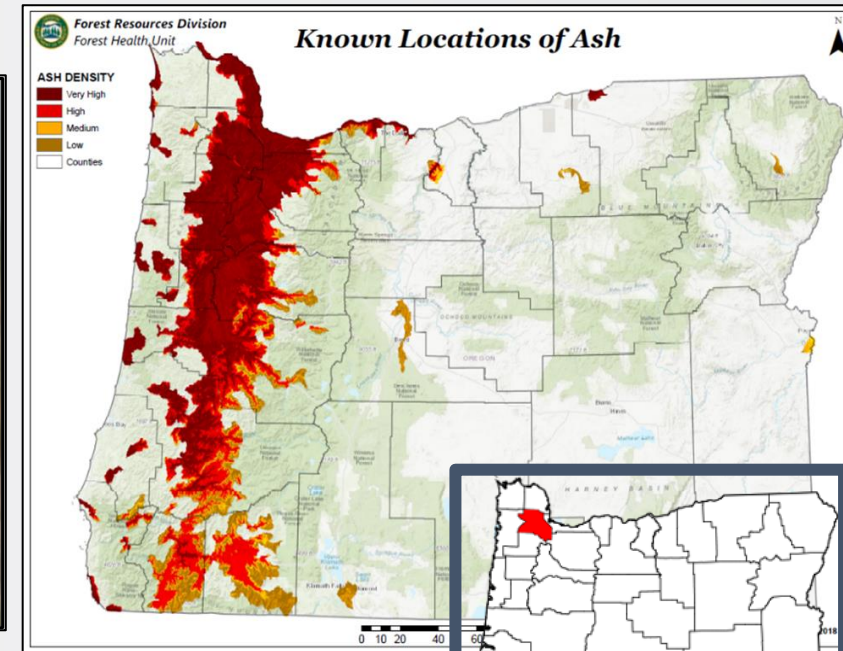
Future...



Virginia Dept of Forestry



ODF



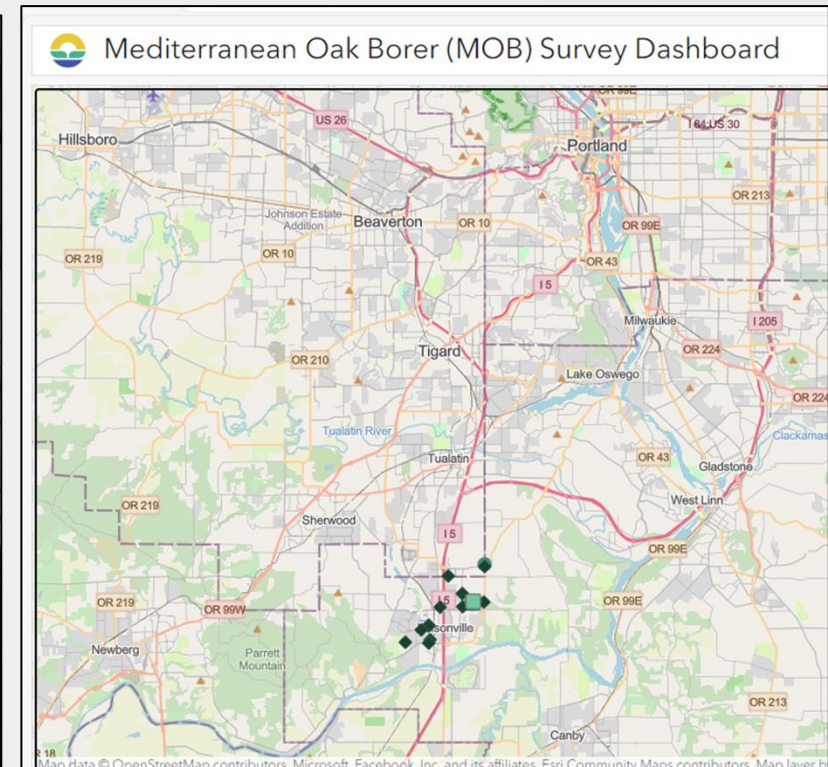
ODF

EAB quarantine, ODA



# Invasive species: Mediterranean oak borer (MOB)

- Oregon: Insects detected 2018, infested oaks detected 2022
- Limited known management options (chip, burn)
- Multiagency effort to monitor, research, control





# Invasive species: Sudden oak death (SOD)



Lethal to tanoak



Rhododendron



Douglas-fir



Grand fir



Oregon myrtle



# SOD: Slow the Spread Program

- Survey & detection
- Delimitation of infected sites
- Treatment of infected sites
- Regulation & education
- Monitoring & research

