



OREGON DEPARTMENT OF **EMERGENCY MANAGEMENT**

Authorities, Roles and Responsibilities for Emergency Support Functions and State Recovery Functions

Erin McMahon, Director, Oregon Department of Emergency Management
Matthew Garrett, Advisor to ODEM Director

House Interim Committee on Early Childhood and Human Services
November 6, 2023



Legal Authorities (ORS 401.032)

- 401.032 Statement of policy and purpose.
 - (2) It is declared to be the policy and intent of the Legislative Assembly that preparations for emergencies and governmental responsibility for responding to emergencies be placed at the local level.
 - The state shall prepare for emergencies but shall not assume authority or responsibility for responding to an emergency unless the appropriate response is beyond the capability of the city and county in the emergency occurs, the city or county fails to act, or the emergency involves two or more counties.

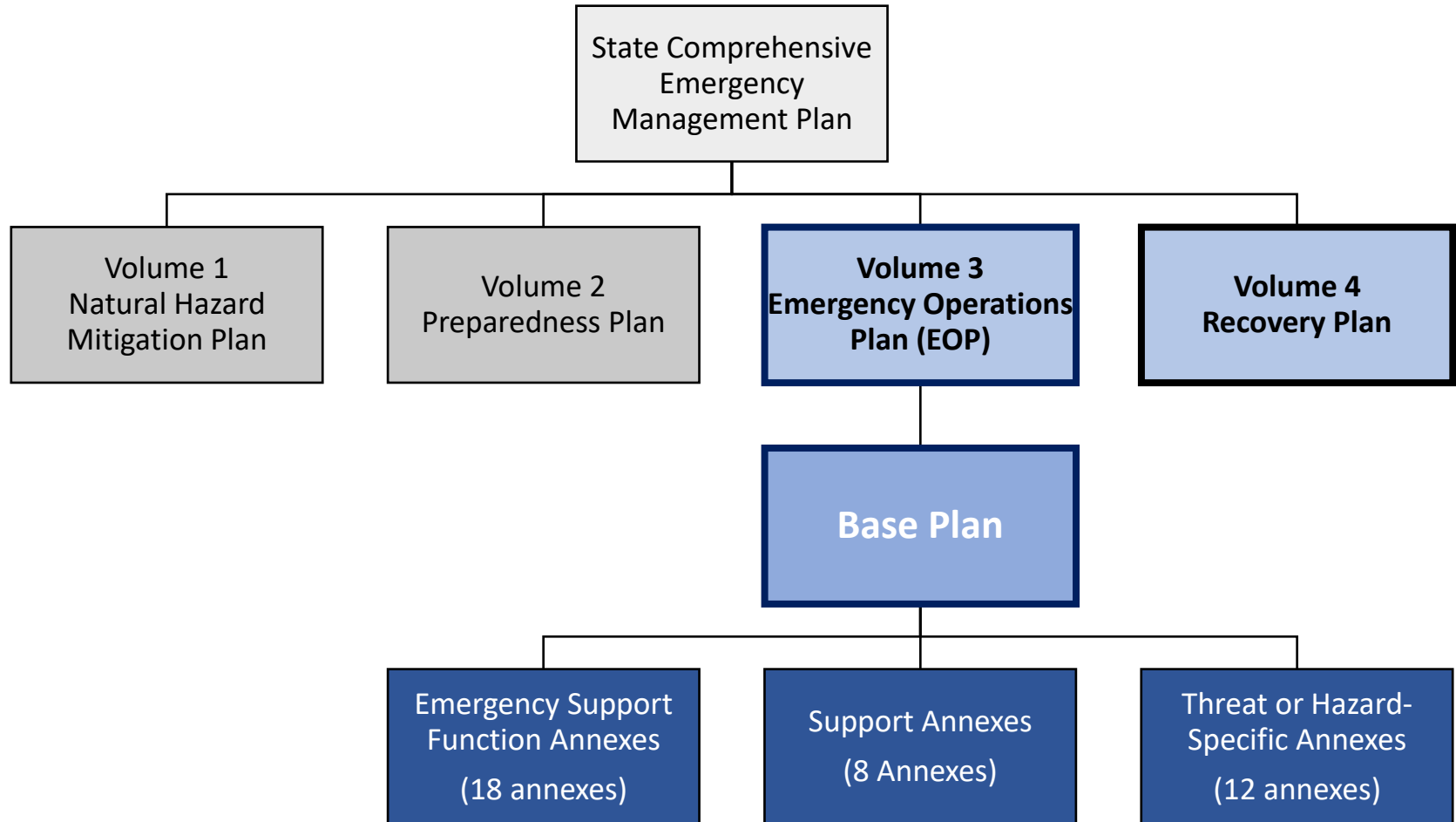


Legal Authorities (ORS 401.052)

- 401.052 Responsibilities of Oregon Department of Emergency Management.
 - (2) The department shall be responsible for:
 - (a) Coordinating and facilitating private sector and governmental efforts to prevent, prepare for, respond to and recover from emergencies; and
 - (b) Coordinating exercises and training, planning, preparedness, response, mitigation and recovery activities with state and local emergency services agencies and organizations.
 - (3) The department shall prepare a statewide emergency management plan and update the plan from time to time as necessary



Oregon's Comprehensive Emergency Management Plan (CEMP)





Volume 3 -- State Emergency Operations Plan (EOP)

- Provides a statewide framework to coordinate federal, state, local, and tribal governments; the private sector; and non-profit organizations work together to provide emergency response activities in the state of Oregon
- Defines roles and responsibilities for state emergency management functions, establishes the conditions under which state resources are mobilized and describes the organizational concepts and structures used to coordinate response.



Legal Authorities - ORS 401.054

- ORS 401.054 directs a select group of state agencies to designate an individual who has authority during an emergency to allocate resources and assets of the agency, entity or official.
- ODEM designates 18 Emergency Support Functions (ESFs) and 7 State Recovery Functions (SRFs) and coordinates with more than fifty county, city, and tribal local emergency management offices around the state.
- All agencies are provided authority through ODEM and the State Comprehensive Emergency Management Plan and its four volumes.



Oregon's Emergency Support Functions



ESF 1
Transportation



ESF 2
Communications



ESF 3
Public Works



ESF 4
Firefighting



ESF 5
**Information and
Planning**



ESF 6
Mass Care



ESF 7
**Logistics
Management and
Resource Support**



ESF 8
**Health and
Medical**



ESF 9
**Search and
Rescue**



ESF 10
**Hazardous
Materials**



ESF 11
**Agriculture, Animals,
and Natural Resources**



ESF 12
Energy



ESF 13
Safety and Security



ESF 14
**Business and
Industry**



ESF 15
**Public
Information**



ESF 16
**Volunteers and
Donations**



ESF 17
**Cyber and Critical
Infrastructure
Security**



ESF 18
**Military
Support**



Emergency Support Function (ESF 6) Mass Care

Lead agency: Oregon Department of Human Services

- Coordinates the distribution of life-sustaining goods and services, including hydration, feeding, sheltering, reunification, and distribution of emergency supplies, when the needs of survivors of emergencies exceeds local or tribal government capabilities
- **Supporting Agencies:** Administrative Services (DAS), Agriculture (ODA), Corrections (DOC), Education (ODE), Employment (OED), Environmental Quality (DEQ), Forestry (ODF), Health Authority (OHA), Housing and Community Services (OHCS), Parks and Recreation, Veteran's Affairs (ODVA)
- **Adjunct Agencies:** American Red Cross, Oregon Food Bank, Oregon Voluntary Agencies Active in Disaster, Oregon Water-Wastewater Response Network



Volume 4 -- Recovery Plan

- Again, ORS 401.052 delegates the responsibility for coordination of the state's emergency program, including coordination of recovery planning activities, to the Oregon Department of Emergency Management
- The Oregon Disaster Recovery Plan objectives which are managed by Oregon Department of Emergency Management:
 - Establish a state recovery organization that provides a framework in which the State will support recovery activities during disasters beyond local capability.
 - Assign roles and responsibilities to state departments for support of state recovery activities.
 - Identify points of coordination with local, tribal, federal, private sector, community, and faith-based partners to coordinate recovery activities.



Oregon's State Recovery Functions



SRF 1
COMMUNITY PLANNING
& CAPACITY BUILDING



SRF 2
ECONOMIC RECOVERY



SRF 3
HEALTH SERVICES



SRF 4
SOCIAL SERVICES



SRF 5
DISASTER HOUSING



SRF 6
INFRASTRUCTURE
SYSTEMS



SRF 7
NATURAL & CULTURAL
RESOURCES



State Recovery Function - SRF 4 Social Services

Lead Agency: Oregon Department of Human Services

- Protecting the most vulnerable and ensuring they have the social and human services support they need after a disaster.
- Assists locally led recovery efforts in restoring social services networks to promote the resilience and well-being of affected individuals and communities.
- **Supporting Agencies:** Administrative Services (DAS), Education (ODE), Veteran's Affairs (ODVA), Employment (OED), Oregon Health Authority (OHA), Oregon Housing and Community Services (OHCS)
- **Federal Coordinating Agency:** Department of Health and Human Services (HHS)



Emergency Support and Recovery Functions

- Recovery begins well before Response is over
- Emergency Support Functions to State Recovery Functions
- Transition from an Incident Action Plan to an Interagency Strategic Recovery Plan
- Recovery Operations can last years to decades

RESPONSE PHASE EMERGENCY SUPPORT FUNCTIONS (ESF)

ESF 1: TRANSPORTATION	SRF 6
ESF 2: COMMUNICATIONS	SRF 6
ESF 3: PUBLIC WORKS	SRF 6
ESF 4: FIREFIGHTING	SRF 1
ESF 5: INFORMATION & PLANNING	SRF 1
ESF 6: MASS CARE	SRF 4
ESF 7: LOGISTICS & RESOURCE SUPPORT	SRF 5
ESF 8: HEALTH & MEDICAL	SRF 1
ESF 9: SEARCH & RESCUE	SRF 3
ESF 10: HAZARDOUS MATERIALS	SRF 7
ESF 11: AGRICULTURAL, ANIMALS & NATURAL RESOURCES	SRF 7
ESF 12: ENERGY	SRF 3
ESF 13: PUBLIC SAFETY & SECURITY	SRF 6
ESF 14: BUSINESS & INDUSTRY	SRF 1
ESF 15: PUBLIC INFORMATION	SRF 2
ESF 16: VOLUNTEERS & DONATIONS	SRF 4
ESF 17: CYBER & CRITICAL INFRASTRUCTURE SECURITY	SRF 5
ESF 18: MILITARY SUPPORT	SRF 2

RECOVERY PHASE STATE RECOVERY FUNCTIONS (SRF)

	SRF 1: COMMUNITY PLANNING & CAPACITY BUILDING (ESF 4, 5, 7, 13, 15, 18)
	SRF 2: ECONOMIC RECOVERY (ESF 14, 17)
	SRF 3: HEALTH SERVICES (ESF 8, 11)
	SRF 4: SOCIAL SERVICES (ESF 6, 16)
	SRF 5: DISASTER HOUSING (ESF 6, 16)
	SRF 6: INFRASTRUCTURE SYSTEMS (ESF 1, 2, 3, 12, 17)
	SRF 7: NATURAL & CULTURAL RESOURCES (ESF 10, 11)



Emergency Support and Recovery Functions

ESF 6: MASS CARE

SRF 4

SRF 5



**SRF 4:
SOCIAL SERVICES**

(ESF 6, 16)



**SRF 5:
DISASTER HOUSING**

(ESF 6, 16)