



# Wildfire & Forestry Workgroup

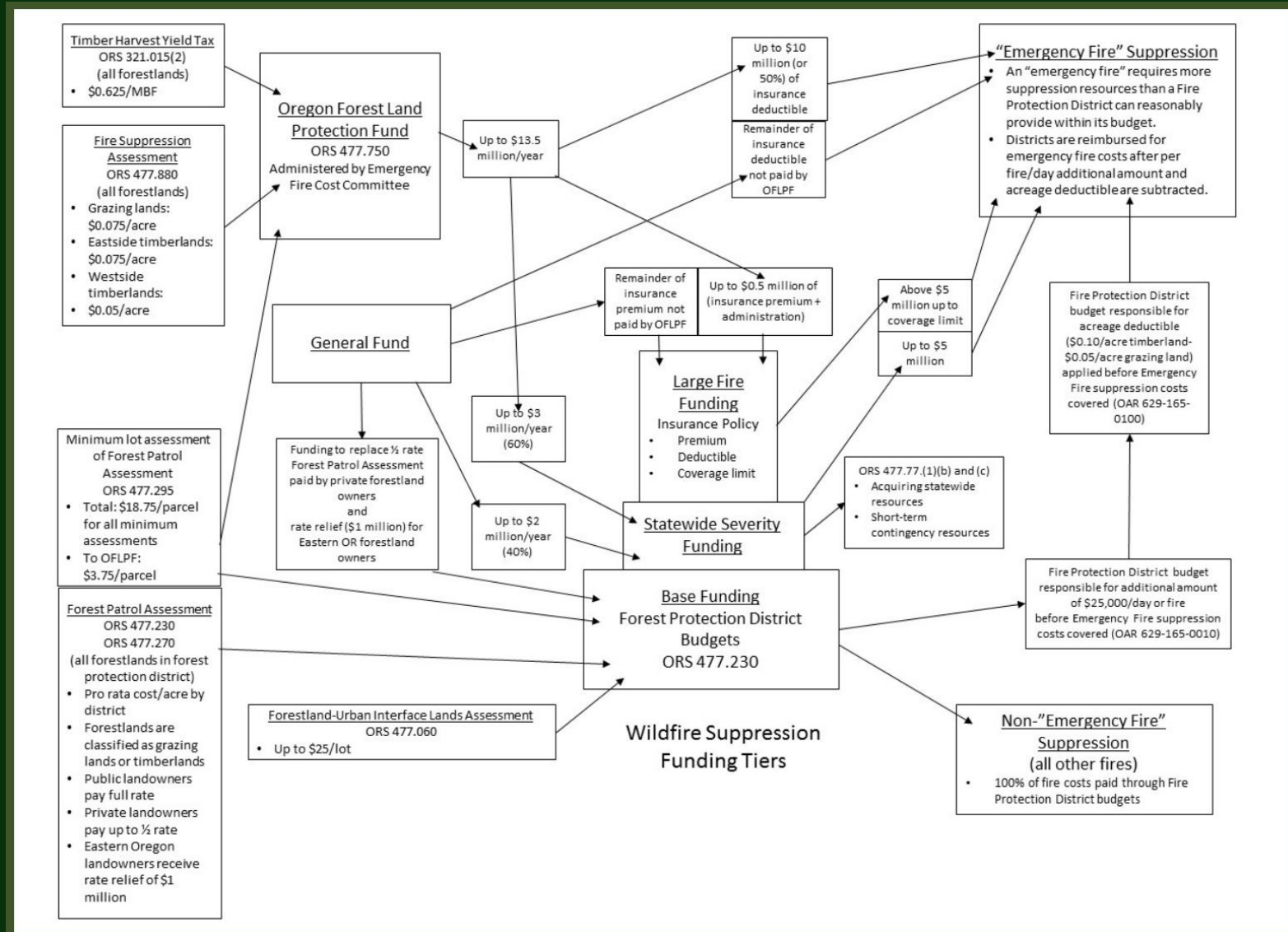
November Legislative Days Update

Senator Elizabeth Steiner & Doug Grafe

# What led us here?

- Increasing complexity of wildfire seasons
- 2021-2023 biennium: Advancements made in statewide wildfire readiness and response, including a \$15 million offset to landowner fire protection assessment rates.
- 2023 Legislative Session: \$15 million offset not carried forward.
- Current funding structure dramatically increases landowner fire protection assessment rates and a workgroup is formed to consider solutions.

# Oregon Wildfire Funding



**Board of Forestry ODF Protection Budget & Assessment Summary**  
 Fiscal Year **2024** General Fund Split **50.00%**

		Protected Acres				Budgeted Dollars			Public Rates*					Private Rates**					Revenue*****		
		Class Type	FY2023	FY2024	Y/Y Change	FY2023	FY2024	Y/Y Change	FY2023	FY2024	Y/Y Change	Agency Admin	OFLPF**	FINAL FY2024	FY2023	FY2024	Y/Y Change	(WPA)****	OFLPF**	FINAL FY2024	FY2024 PROJECTION
<b>NORTHWEST OREGON</b>																					
Northwest Oregon	Timber	1,760,808.09	1,761,784.85	0.06%	\$5,427,849	\$6,348,594	16.97%	\$2.9703	\$3.2607	9.78%	\$0.7450	\$0.0500	\$4.0557	\$1.4852	\$1.6303	9.78%	\$0.0000	\$0.0500	\$1.6803	\$4,865,673	
West Oregon	Timber	1,083,878.94	1,070,116.64	-1.27%	\$3,384,590	\$3,811,877	12.62%	\$2.5021	\$3.1636	26.44%	\$0.7450	\$0.0500	\$3.9586	\$1.2511	\$1.5818	26.44%	\$0.0000	\$0.0500	\$1.6318	\$2,861,942	
North Cascade	Timber	651,724.59	658,097.77	0.98%	\$2,704,014	\$2,972,250	9.92%	\$3.0371	\$4.1693	37.28%	\$0.7450	\$0.0500	\$4.9643	\$1.5186	\$2.0846	37.28%	\$0.0000	\$0.0500	\$2.1346	\$2,085,012	
<b>NOA TOTALS &amp; AVERAGES</b>		<b>Timber</b>	<b>3,496,411.62</b>	<b>3,489,999.26</b>	<b>-0.18%</b>	<b>\$11,516,253</b>	<b>\$13,132,721</b>	<b>14.04%</b>	<b>\$2.8376</b>	<b>\$3.4022</b>	<b>19.90%</b>	<b>\$0.7450</b>	<b>\$0.0500</b>	<b>\$4.1972</b>	<b>\$1.4188</b>	<b>\$1.7011</b>	<b>19.90%</b>	<b>\$0.0000</b>	<b>\$0.0500</b>	<b>\$1.7511</b>	<b>\$9,812,627</b>

<b>SOUTHERN OREGON</b>																					
Southwest Oregon	Timber	1,685,816.14	1,745,061.03	3.51%	\$9,842,259	\$11,203,825	13.83%	\$5.8856	\$7.7405	31.52%	\$0.7450	\$0.0500	\$8.5355	\$2.9428	\$3.8703	31.52%	\$0.0000	\$0.0500	\$3.9203	\$9,833,671	
	Grazing	194,951.10	126,345.41	-35.19%	\$635,759	\$559,740	-11.96%	\$0.9505	\$2.6047	174.03%	\$0.7450	\$0.0750	\$3.4247	\$0.4753	\$1.3024	174.03%	\$0.0000	\$0.0750	\$1.3774		
Coos FPA	Timber	1,501,135.94	1,507,326.42	0.41%	\$6,850,828	\$8,083,926	18.00%	\$3.6087	\$5.0141	38.94%	\$0.7450	\$0.0500	\$5.8091	\$1.8044	\$2.5071	38.94%	\$0.0000	\$0.0500	\$2.5571	\$6,680,054	
	Grazing	60,873.97	68,737.37	12.92%	\$209,484	\$247,221	18.01%	\$2.6540	\$3.7512	41.34%	\$0.7450	\$0.0750	\$4.5712	\$1.3270	\$1.8756	41.34%	\$0.0000	\$0.0750	\$1.9506		
Douglas FPA	Timber	1,403,769.17	1,403,921.04	0.01%	\$6,882,275	\$8,391,376	21.93%	\$4.8629	\$6.0430	24.27%	\$0.7450	\$0.0500	\$6.8380	\$2.4315	\$3.0215	24.27%	\$0.0000	\$0.0500	\$3.0715	\$7,455,094	
	Grazing	270,388.75	272,360.81	0.73%	\$684,979	\$834,419	21.82%	\$1.3760	\$2.8700	108.58%	\$0.7450	\$0.0750	\$3.6900	\$0.6880	\$1.4350	108.58%	\$0.0000	\$0.0750	\$1.5100		
South Cascade	Timber	1,133,982.11	1,133,361.11	-0.05%	\$4,960,326	\$5,200,029	4.83%	\$3.0402	\$4.4751	47.20%	\$0.7450	\$0.0500	\$5.2701	\$1.5201	\$2.2376	47.20%	\$0.0000	\$0.0500	\$2.2876	\$3,943,529	
Western Lane	Timber	786,058.06	781,285.28	-0.61%	\$2,960,742	\$3,234,455	9.24%	\$3.0780	\$3.8138	23.91%	\$0.7450	\$0.0500	\$4.6088	\$1.5390	\$1.9069	23.91%	\$0.0000	\$0.0500	\$1.9569	\$2,234,996	
<b>SOA TOTALS &amp; AVERAGES</b>		<b>Timber</b>	<b>6,510,761.42</b>	<b>6,570,954.88</b>	<b>0.92%</b>	<b>\$31,496,430</b>	<b>\$36,113,611</b>	<b>14.66%</b>	<b>\$4.3056</b>	<b>\$5.7223</b>	<b>32.90%</b>	<b>\$0.7450</b>	<b>\$0.0500</b>	<b>\$6.5173</b>	<b>\$2.1528</b>	<b>\$2.8612</b>	<b>32.90%</b>	<b>\$0.0000</b>	<b>\$0.0500</b>	<b>\$2.9112</b>	<b>\$30,147,344</b>
<b>Grazing</b>		<b>526,213.82</b>	<b>467,443.59</b>	<b>-11.17%</b>	<b>\$1,530,222</b>	<b>\$1,641,380</b>	<b>7.26%</b>	<b>\$1.3662</b>	<b>\$2.9279</b>	<b>114.31%</b>	<b>\$0.7450</b>	<b>\$0.0750</b>	<b>\$3.7479</b>	<b>\$0.6831</b>	<b>\$1.4639</b>	<b>114.31%</b>	<b>\$0.0000</b>	<b>\$0.0750</b>	<b>\$1.5389</b>		

<b>EASTERN OREGON</b>																					
Central Oregon	Timber	1,016,030.60	1,024,660.20	0.85%	\$6,765,163	\$7,211,339	6.60%	\$4.8697	\$6.5100	33.68%	\$0.7450	\$0.0750	\$7.3300	\$2.4349	\$3.2550	33.68%	-\$0.2349	\$0.0750	\$3.0951	\$8,248,465	
	Grazing	1,046,424.55	1,047,211.84	0.08%	\$2,402,880	\$3,312,093	37.84%	\$1.9176	\$3.2128	67.54%	\$0.7450	\$0.0750	\$4.0328	\$0.9588	\$1.6064	67.54%	-\$0.2349	\$0.0750	\$1.4465		
Northeast Oregon	Timber	848,552.31	846,311.34	-0.26%	\$4,757,304	\$5,039,154	5.92%	\$3.8919	\$5.0664	30.18%	\$0.7450	\$0.0750	\$5.8864	\$1.9460	\$2.5332	30.18%	-\$0.2349	\$0.0750	\$2.3733	\$5,319,325	
	Grazing	1,092,014.90	1,089,878.27	-0.20%	\$1,887,678	\$2,187,454	15.88%	\$1.3582	\$1.9344	42.42%	\$0.7450	\$0.0750	\$2.7544	\$0.6791	\$0.9672	42.42%	-\$0.2349	\$0.0750	\$0.8073		
Klamath Lake	Timber	1,015,275.44	1,011,741.33	-0.35%	\$4,894,385	\$5,427,414	10.89%	\$4.0077	\$5.2163	30.16%	\$0.7450	\$0.0750	\$6.0363	\$2.0039	\$2.6082	30.16%	-\$0.2349	\$0.0750	\$2.4483	\$5,214,114	
	Grazing	488,490.35	480,165.79	-1.70%	\$936,160	\$852,123	-8.98%	\$1.2600	\$1.6761	33.02%	\$0.7450	\$0.0750	\$2.4961	\$0.6300	\$0.8381	33.02%	-\$0.2349	\$0.0750	\$0.6782		
Walker Range FPA	Timber	183,525.19	183,422.38	-0.06%	\$974,610	\$1,075,960	10.40%	\$4.4340	\$4.6486	4.84%	\$0.7450	\$0.0750	\$5.4686	\$2.2170	\$2.3243	4.84%	-\$0.2349	\$0.0750	\$2.1644	\$642,340	
	Grazing	2,545.27	2,569.59	0.96%	\$2,492	\$2,716	9.00%	\$0.4858	\$1.0377	113.60%	\$0.7450	\$0.0750	\$1.8577	\$0.2429	\$0.5188	113.60%	-\$0.2349	\$0.0750	\$0.3589		
<b>EOA TOTALS &amp; AVERAGES</b>		<b>Timber</b>	<b>3,063,383.54</b>	<b>3,066,135.25</b>	<b>0.09%</b>	<b>\$17,391,462</b>	<b>\$18,753,867</b>	<b>7.83%</b>	<b>\$4.2871</b>	<b>\$5.5733</b>	<b>30.00%</b>	<b>\$0.7450</b>	<b>\$0.0750</b>	<b>\$6.3933</b>	<b>\$2.1435</b>	<b>\$2.7867</b>	<b>30.00%</b>	<b>-\$0.2349</b>	<b>\$0.0750</b>	<b>\$2.6268</b>	<b>\$19,424,244</b>
<b>Grazing</b>		<b>2,629,475.07</b>	<b>2,619,825.49</b>	<b>-0.37%</b>	<b>\$5,229,210</b>	<b>\$6,354,386</b>	<b>21.52%</b>	<b>\$1.5617</b>	<b>\$2.3972</b>	<b>53.50%</b>	<b>\$0.7450</b>	<b>\$0.0750</b>	<b>\$3.2172</b>	<b>\$0.7809</b>	<b>\$1.1986</b>	<b>53.50%</b>	<b>-\$0.2349</b>	<b>\$0.0750</b>	<b>\$1.0387</b>		

<b>STATEWIDE TOTALS &amp; AVERAGES</b>																				
By Land Class Type	Timber	13,070,556.58	13,127,089.39	0.43%	\$60,404,145	\$68,000,199	12.58%	\$3.9086	\$5.0707	29.73%	\$0.7450	\$0.0583	\$5.8740	\$1.9543	\$2.5353	29.73%	-\$0.2349	\$0.0583	\$2.3588	\$59,384,215
	Grazing	3,155,688.89	3,087,269.08	-2.17%	\$6,759,432	\$7,995,766	18.29%	\$1.5291	\$2.4775	62.02%	\$0.7450	\$0.0750	\$3.2975	\$0.7646	\$1.2388	62.02%	-\$0.2349	\$0.0750	\$1.0789	
<b>Combined Total</b>		<b>16,226,245.47</b>	<b>16,214,358.47</b>	<b>-0.07%</b>	<b>\$67,163,576</b>	<b>\$75,995,965</b>	<b>13.15%</b>	<b>\$3.4458</b>	<b>\$4.5769</b>	<b>32.83%</b>	<b>\$0.7450</b>	<b>\$0.0650</b>	<b>\$5.3869</b>	<b>\$1.7229</b>	<b>\$2.2885</b>	<b>32.83%</b>	<b>-\$0.2349</b>	<b>\$0.0650</b>	<b>\$2.1186</b>	

<b>AREA &amp; SALEM BUDGET UNITS*****</b>																				
Salem Protection Division	Total Acres	16,226,245.47	16,178,035.02	-0.30%	\$6,714,980	\$7,468,155	11.22%													\$7,712,689
Northwest Oregon Area	Total Acres	3,496,411.62	3,489,999.26	-0.18%	\$238,536	\$297,332	24.65%													\$160,335
Southern Oregon Area	Total Acres	7,036,975.24	7,002,075.02	-0.50%	\$440,366	\$473,724	7.58%													\$422,284
Eastern Oregon Area	Total Acres	5,692,858.61	5,685,960.74	-0.12%	\$623,036	\$619,127	-0.63%													\$663,995

**NOTES**  
 \* Agency Admin rate assessed to public landowners, per SB5522 and HB5024A.  
 \*\* Lands not owned by public entities may not be assessed in excess of 50% of the pro rata cost per acre, per ORS 477.230.  
 \*\*\* Oregon Forest Land Protection Fund additional per private and public acre assessment, per ORS 477.880.  
 \*\*\*\* Wildfire Protection Act (WPA) passed in 2013, in accordance with ORS 477.777, includes Eastside Rate Relief for private landowners only.  
 \*\*\*\*\* Projected Revenue includes all Private, Public, Agreement, and General Fund (WPA included). Dollar amount may be lower or higher than budgeted dollars due to landowner Actual Cost Computation (ACC) carryover debit/credit to collection rates, per ORS 477.232.  
 \*\*\*\*\* Area and Salem data is only for reference. Areas and Salem do not show their own rates as their budgeted rates are included in each of the district rates. Area and Salem budgets and revenues are also only for reference, as budget and revenue numbers are part of each district's budget and revenue.

# Guiding Principles

- We have a very high functioning response system. Maintaining a strong public/private partnership through a complete and coordinated system is a cornerstone of our success.
- Catastrophic wildfire impacts have expanded beyond a natural resource issue; it is of greater urgent social concern, with impacts to public health and safety, community wellbeing, tourism, and our economy that affects all Oregonians. We are looking to establish a more equitable funding system.
- Our funding system is too complicated and needs to be retooled to decomplexify, increase trust in the equity of the system, and ensure buy-in with our Legislature, landowners, and the broader public about who, how, and why we are paying into the system.



# Stakeholders Involved

- ODF & Board of Forestry
- Landowners
  - Large and Small Private Lands with geographic diversity
  - Public lands
  - Conservation lands
  - Tribal lands

# Professional Staff

- Professional Facilitator
- Governor's Office Staff

Convened by Senator Elizabeth Steiner

## Workgroup Considerations:

- Understand the challenges with sustaining Oregon's current wildfire funding structure.
- Consider public impacts of wildfire (e.g. public health, economic, environmental). Does that change how we fund fire protection in Oregon?
- Seek a more equitable solution to wildfire funding:
  - Reduce complexity
  - Increase transparency and trust

An aerial photograph of a dense forest with various shades of green foliage. A solid dark green horizontal band is superimposed over the center of the image, containing the text "Thank You" in white serif font.

Thank You