



# **OREGON** DEPARTMENT OF **EMERGENCY MANAGEMENT**

## **Oregon Emergency Operation Plan, authorities, roles and responsibilities of Emergency Support Functions (ESF)**

**House Interim Committee on Emergency  
Management, General Government and Veterans  
Sept. 28, 2023**



## Legal Authorities (ORS 401)

- 401.052 Responsibilities of Oregon Department of Emergency Management.
  - (2) The department shall be responsible for:
    - (a) Coordinating and facilitating private sector and governmental efforts to prevent, prepare for, respond to and recover from emergencies; and
    - (b) Coordinating exercises and training, planning, preparedness, response, mitigation and recovery activities with state and local emergency services agencies and organizations.
  - (3) The department shall prepare a statewide emergency management plan and update the plan from time to time as necessary



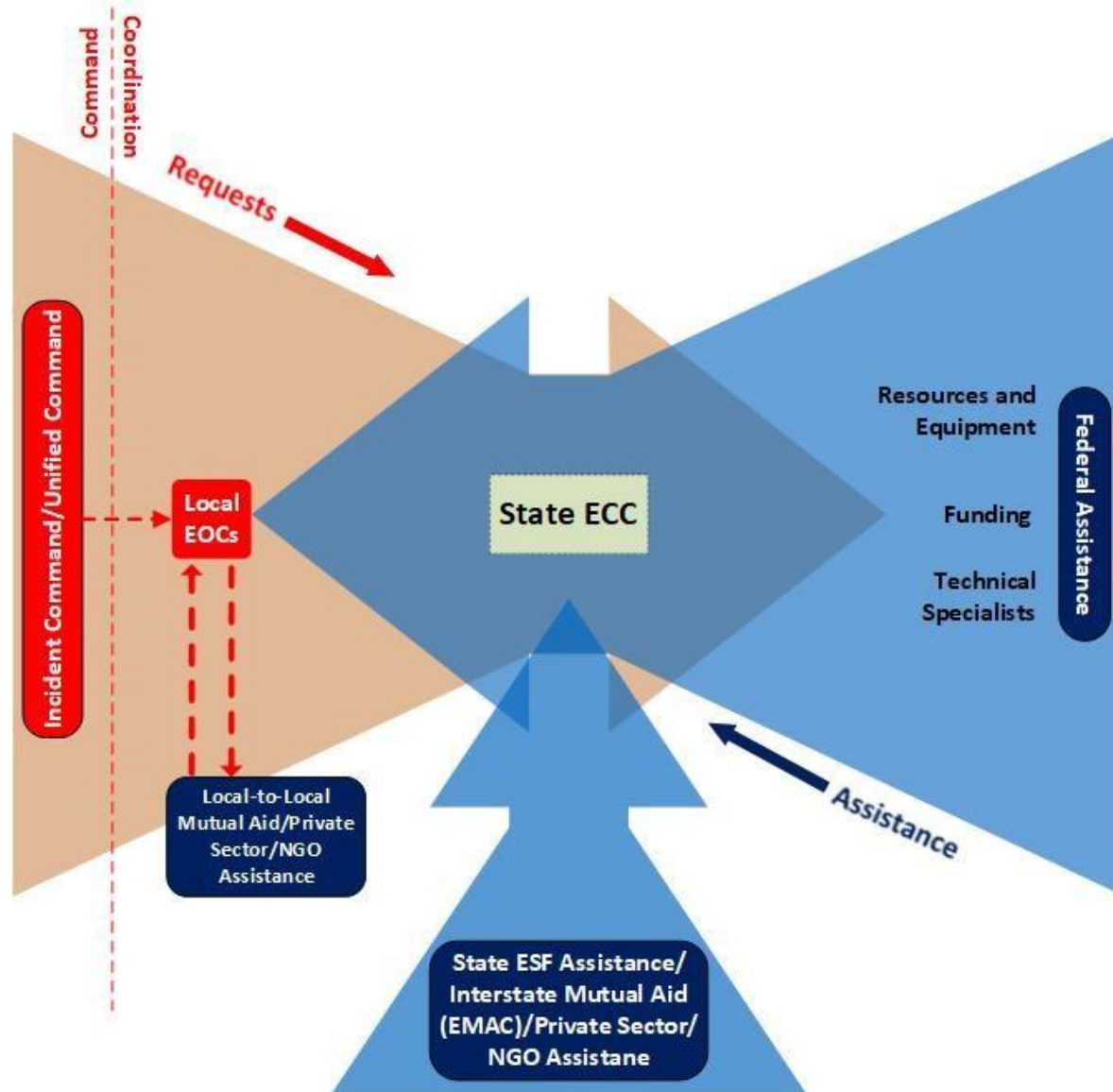
## Authorities-Purpose for the Oregon State EOP

---

- Provides a statewide framework to coordinate federal, state, local, and tribal governments; the private sector; and non-profit organizations work together to provide emergency response activities in the state of Oregon
- Defines roles and responsibilities for state emergency management functions, establishes the conditions under which state resources are mobilized and describes the organizational concepts and structures used to coordinate response.



# Authorities-Purpose for the Oregon State EOP





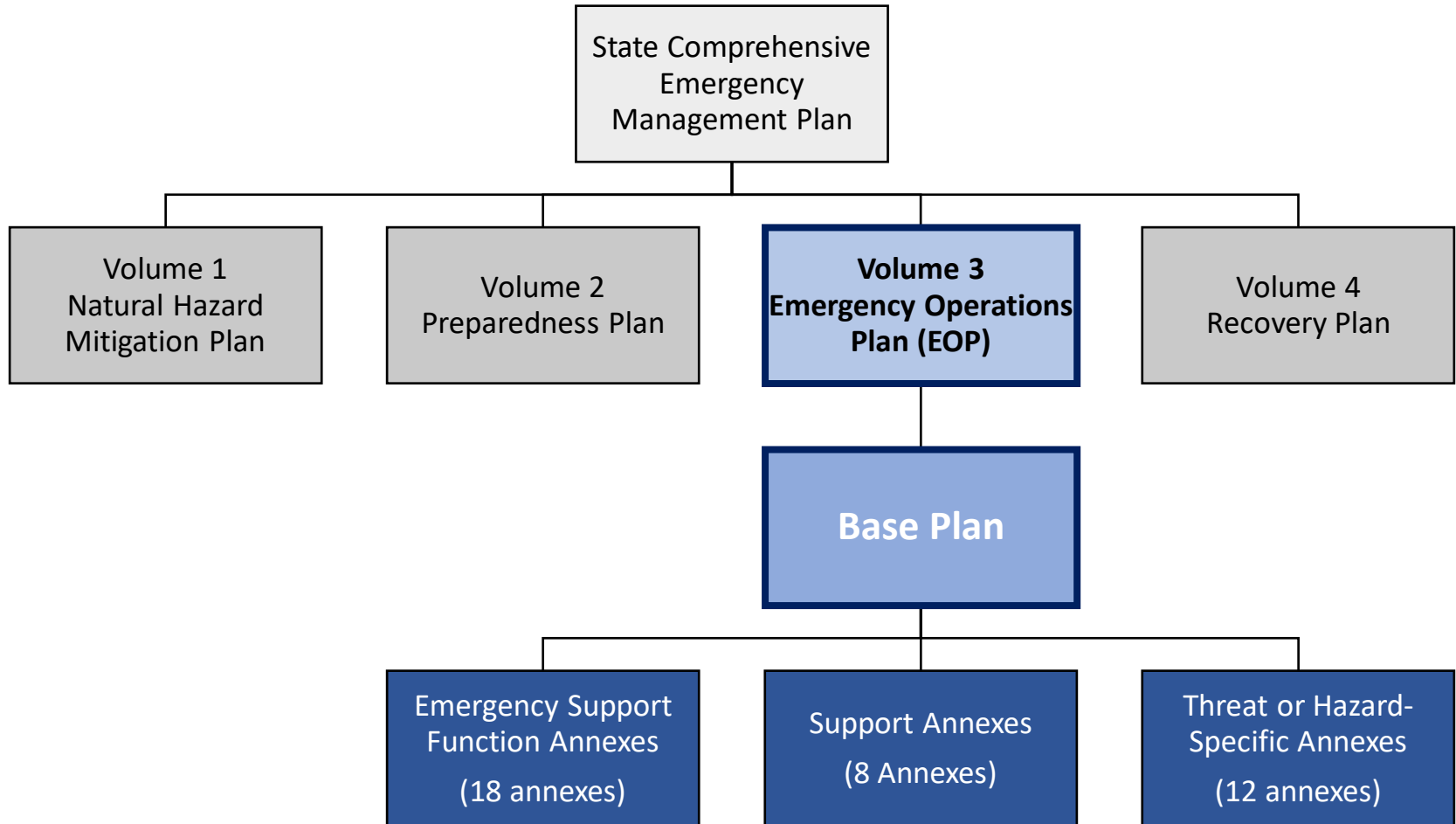
## Legal Authorities - ORS 401.054

---

- ORS 401.054 directs a select group of state agencies to designate an individual who has authority during an emergency to allocate resources and assets of the agency, entity or official.
- ODEM designates 18 Emergency Support Functions (ESFs) and coordinates with more than fifty county, city, and tribal local emergency management offices around the state.
- All agencies are provided authority through ODEM and the State Comprehensive Emergency Management Plan and its four volumes.



# Oregon's Comprehensive Emergency Management Plan (CEMP)





# Oregon's Emergency Support Functions



**ESF 1**  
Transportation



**ESF 2**  
Communications



**ESF 3**  
Public Works



**ESF 4**  
Firefighting



**ESF 5**  
Information and  
Planning



**ESF 6**  
Mass Care



**ESF 7**  
Logistics  
Management and  
Resource Support



**ESF 8**  
Health and  
Medical



**ESF 9**  
Search and  
Rescue



**ESF 10**  
Hazardous  
Materials



**ESF 11**  
Agriculture, Animals,  
and Natural Resources



**ESF 12**  
Energy



**ESF 13**  
Safety and Security



**ESF 14**  
Business and  
Industry



**ESF 15**  
Public  
Information



**ESF 16**  
Volunteers and  
Donations



**ESF 17**  
Cyber and Critical  
Infrastructure  
Security



**ESF 18**  
Military  
Support



# OREGON DEPARTMENT OF EMERGENCY MANAGEMENT

## ESF #1: Transportation

### Lead Agency: Oregon Department of Transportation

Responsible for the coordination of emergency transportation needs during an emergency including assessing damage to and restoring and maintaining transportation networks, specifically roads and bridges.

Examples of supporting agencies: Oregon Department of Energy, Marine Board, Oregon Military Department





# OREGON DEPARTMENT OF EMERGENCY MANAGEMENT

## **ESF #6: Mass Care**

### **Lead Agency: Oregon Department of Human Services**

Responsible for coordinating the distribution of life-sustaining goods and services, including hydration, feeding, sheltering, reunification, and distribution of emergency supplies.

Examples of supporting agencies: Oregon Department of Agriculture, Oregon Health Authority



# OREGON DEPARTMENT OF EMERGENCY MANAGEMENT

## ESF #10: Hazardous Materials

### Lead Agencies: Oregon Department of Environmental Quality and Oregon State Fire Marshal

Responsible for coordinating with state and federal agencies in response to an actual or potential discharge or release of oil or hazardous materials resulting from a natural, human-caused, or technological disaster and coordinating the appropriate response to other environmental protection issues.

Examples of supporting agencies: Oregon Department of Energy, Oregon Health Authority



# Oregon's Emergency Support Functions



**ESF 1**  
Transportation



**ESF 2**  
Communications



**ESF 3**  
Public Works



**ESF 4**  
Firefighting



**ESF 5**  
Information and  
Planning



**ESF 6**  
Mass Care



**ESF 7**  
Logistics  
Management and  
Resource Support



**ESF 8**  
Health and  
Medical



**ESF 9**  
Search and  
Rescue



**ESF 10**  
Hazardous  
Materials



**ESF 11**  
Agriculture, Animals,  
and Natural Resources



**ESF 12**  
Energy



**ESF 13**  
Safety and Security



**ESF 14**  
Business and  
Industry



**ESF 15**  
Public  
Information



**ESF 16**  
Volunteers and  
Donations



**ESF 17**  
Cyber and Critical  
Infrastructure  
Security



**ESF 18**  
Military  
Support