



Overview

- Wild Salmon Center & the Stronghold Approach
- Oregon Coast Coho: Restoration and Recovery
- Strategic Action Plans
- Support for Locally-led Restoration

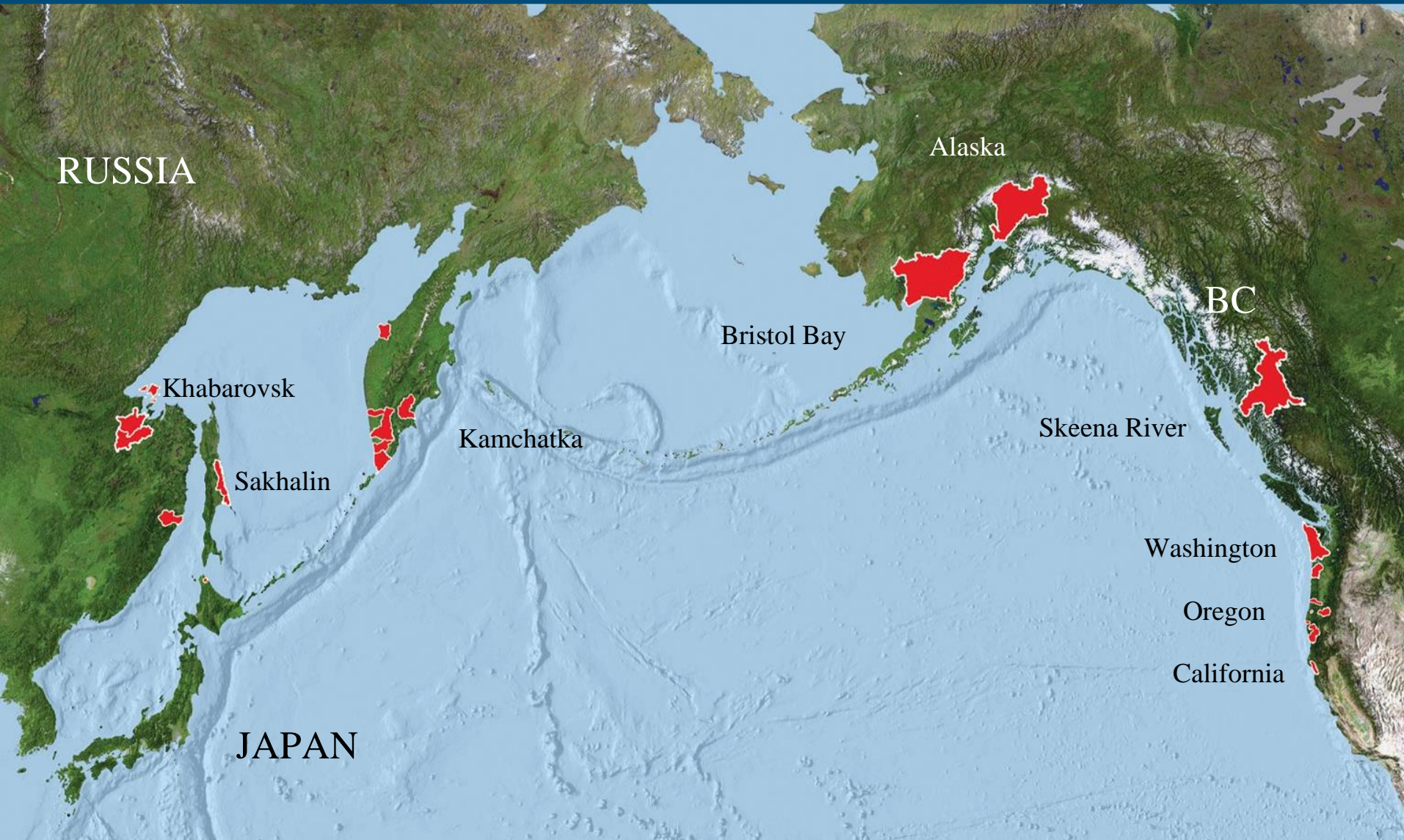


Our Mission



The mission of Wild Salmon Center (WSC) is to promote the conservation and sustainable use of wild salmon ecosystems across the Pacific Rim. We identify science-based solutions to sustain wild salmonids and the human communities and livelihoods that depend on them.

WSC Programs



Permanent Protected Areas (Russia)

Nimelen River

An aerial photograph capturing a wide, winding river, the Nimelen River, as it meanders through a vast, mountainous landscape. The terrain is characterized by rolling hills and deep valleys, all covered in dense forests. The foliage is in full autumn, displaying a rich palette of golden yellows, oranges, and browns. The river itself is a pale, silty blue, contrasting with the warm tones of the surrounding woods. The lighting is soft, suggesting a late afternoon or early morning setting, which casts long, gentle shadows across the mountain ridges and into the valleys. The overall scene conveys a sense of a remote, natural, and protected wilderness area.

Protecting Bristol Bay (Alaska)

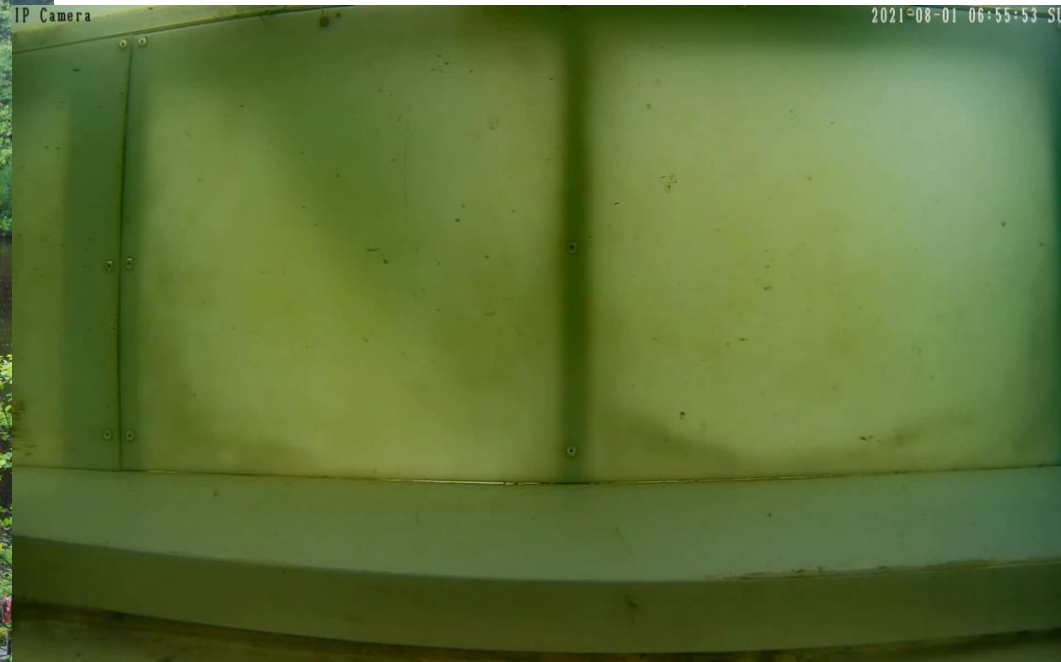
Electronics / Hybrid Power / Crew Shots
FALL / 2022
National Fisherman
INFORMED FISHERMEN • PROFITABLE FISHERIES • SUSTAINABLE FISH

BIG TIMES ON BRISTOL BAY



Integrating Traditional Ecological Knowledge and AI (British Columbia)

Computer-vision (AI) models for automated in-season counting of returning salmon



Oregon Coast

Recover Oregon Coast (OC) coho through the protection and restoration of critical habitats in wild coho strongholds.

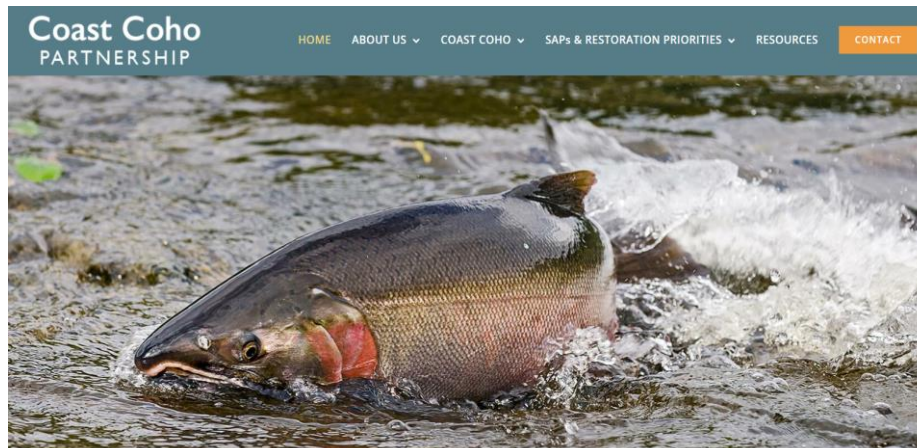
If we're successful, OC coho will become the first run of Pacific salmon ever removed from the Endangered Species list.



Oregon Coast



"How can we support local recovery efforts?"



coastcoho.org

Strategic Action Plans



Strategic Action Plan for the Protection & Restoration of Coho Salmon Habitat

~ The Nehalem River ~



Strategic Action Plan for Coho Salmon Recovery

~ The Siuslaw River ~



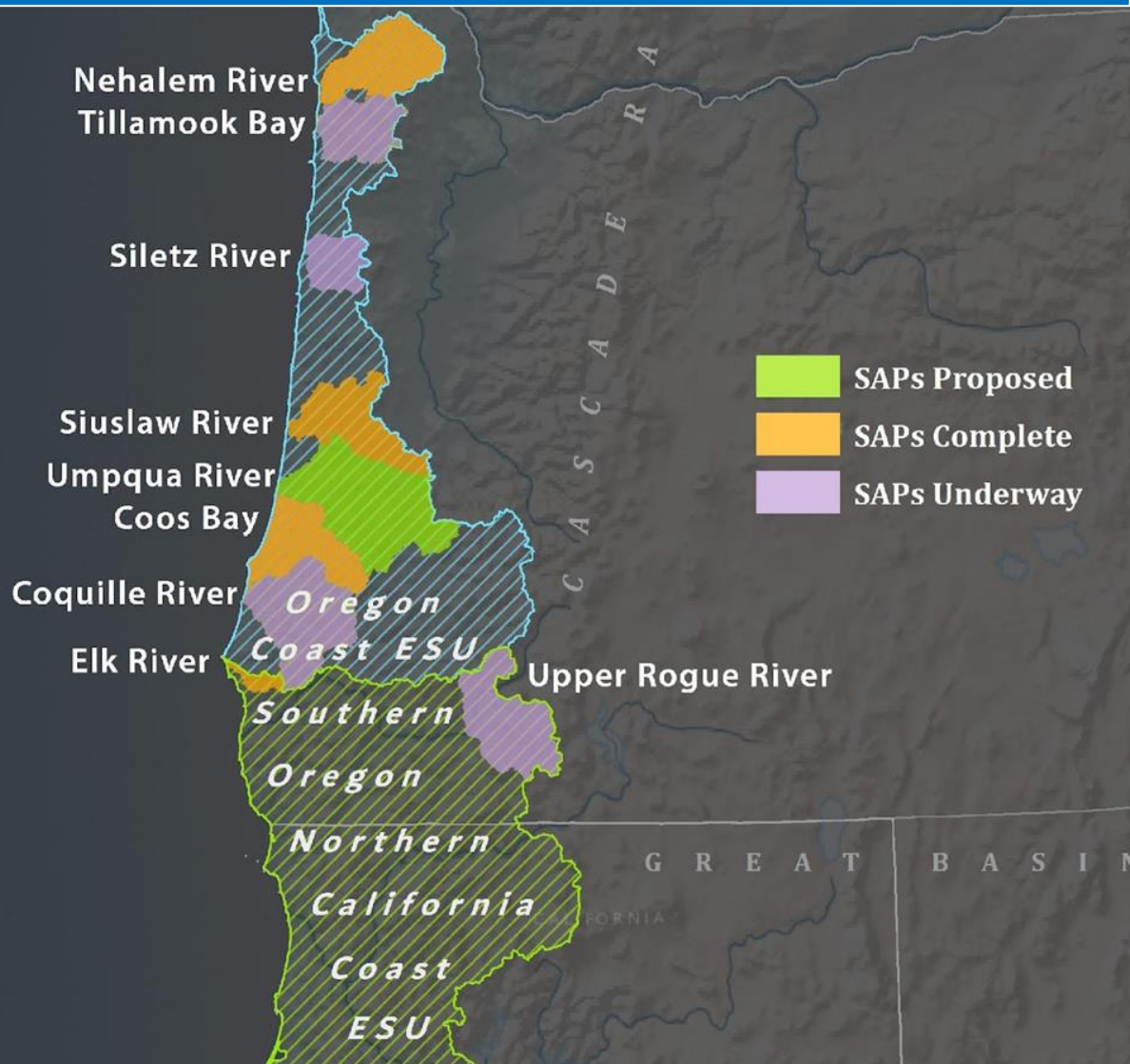
Strategic Action Plan for Coho Salmon Recovery

~ The Coos Basin ~

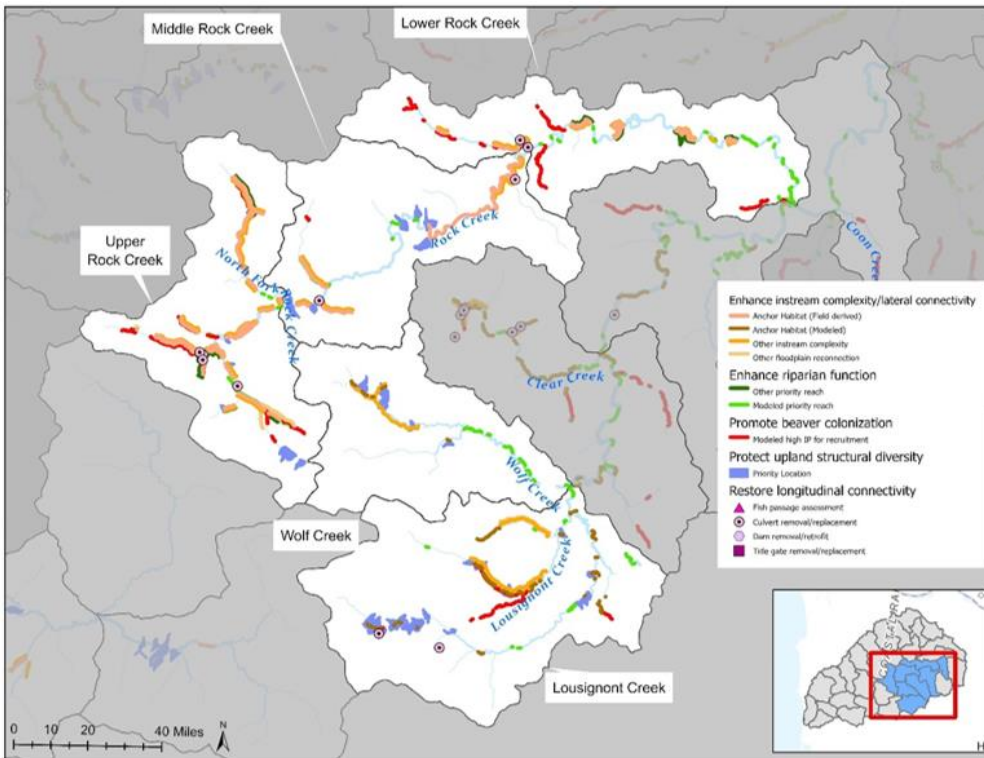


Strategic Action Plan for Coho Salmon Recovery

~ The Elk River ~



Strategic Action Plans



Focal Area	Restoration Project	Lead (landowner)	Project Start		
			22 - 23	24 - 25	26 - 27
Rock - Lousignont - Wolf	Upper Lousignont LWD	UNWC (ODF)	X		
	Wolf Creek LWD	UNWC (ODF)		X	
	BDA augmentation	UNWC (ODF)		X	
	Highway 26 culvert (feasibility)	UNWC (ODF)			X
Humbug - Fishhawk - Beneke	Fishhawk dam passage	UNWC (private)		X	
	Big Creek LWD	UNWC (Weyerhaeuser)		X	
	Fishhawk and Boxler Creek LWD	UNWC (ODF)		X	
	Beneke Creek LWD / riparian	UNWC (ODF)	X		
	Fishhawk riparian	UNWC			X
Humbug Creek (ODFW refuge)	UNWC (ODFW)			X	
Small mainstem / estuary tribs	Tweedle Creek BDA, LWD, riparian (private)	UNWC (private)	X		
	Jetty Creek LWD	LNWC (Greenwood Res)	X		
	Upper Oak Ranch Creek LWD	UNWC (ODF)	X		
	Crawford Creek BDA – direct	UNWC (ODF)	X		
	Spruce Run Creek LWD	LNWC (ODF Clatsop)		X	
	Fall Creek LWD	UNWC (ORM Timber)		X	
	Neah-Kah-Nie Creek LWD	LNWC (Private)		X	
	Spruce Run Confluence LWD	LNWC (ODF)			X
	Cook Creek confluence LWD	LNWC (State Parks)			X
	Fall Creek fish passage	UNWC (ORM Timber)			X
	Hamilton Creek LWD	UNWC (ODF)			X
	O'Black Creek LWD	UNWC (private)			X
	Dass Creek LWD	UNWC (private)			X
	Highway 47 culverts (feasibility)	UNWC (private)			X
North Fork Nehalem	Grand Rapids Creek LWD & BDA	LNWC (Greenwood Res)	X		
	Coal Creek riparian planting	LNWC (private)	X		
	Gravel Creek LWD	Stimson Timber			X
	Soapstone Creek LWD	LNWC (ODF Clatsop)		X	

Support for Local Partners

Since 2017, WSC has raised \$10.3 million -

- \$8.6m – NOAA Restoration Center
- \$1.7m – NFWF (Oregon Governors Fund)

Pending: \$21 million -

- \$15m – NOAA (IRA and BIL)
- \$6m – NFWF (Resilience Fund)

Local Councils: \$23 million -

- Coos Bay SAP - \$12m
- Siuslaw SAP - \$11m



Questions

