

## THE IMPORTANCE OF CONTINUITY OF CARE

### THE CURRENT EQUITY CORPS MODEL LEAVES CLIENTS WITHOUT REPRESENTATION, AND WITHOUT LEGAL CONTINUITY OF CARE



### WHY ECO NEEDS TO CHANGE

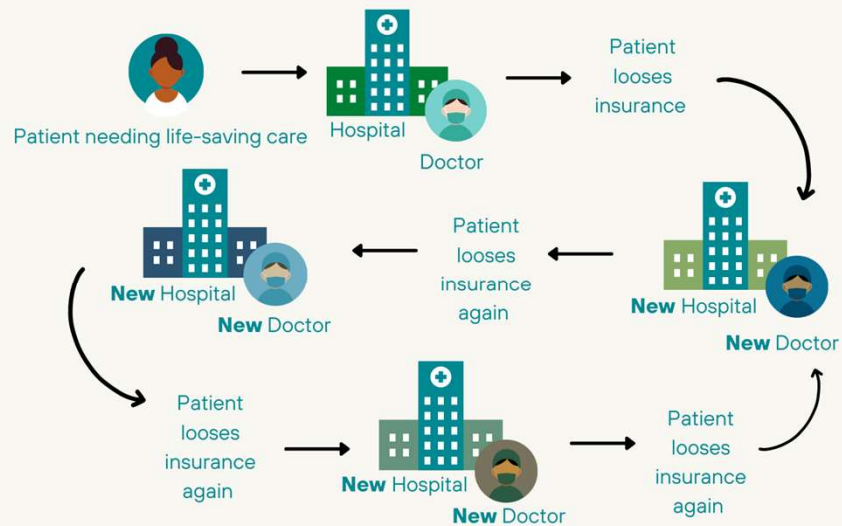
- **ECO is not client-centered or trauma-informed.**
- **Every client deserves the right to choose whether to stay with their attorney for the entirety of their life-changing deportation case.**

# The Importance of Continuity of Care

## THE CURRENT EQUITY CORPS MODEL

Bounces clients between attorneys - and periods of no representation at all

**What ECO would look like as a healthcare model:**



## WHY ECO NEEDS REFORM

- 1 ECO is not client-centered or trauma-informed.
- 2 Low-income Oregonians in deportation proceedings enrolled in this state program for free legal representation have been so concerned by this clearinghouse shuffle and losing representation that some have simultaneously been in ECO and hired their own attorney.

Zealous, Continuous Representation

Transparent and Shared Intake and Case Distribution Systems

Neutral and Experienced Oversight with Best Practice Standards  
and Accountability Measures