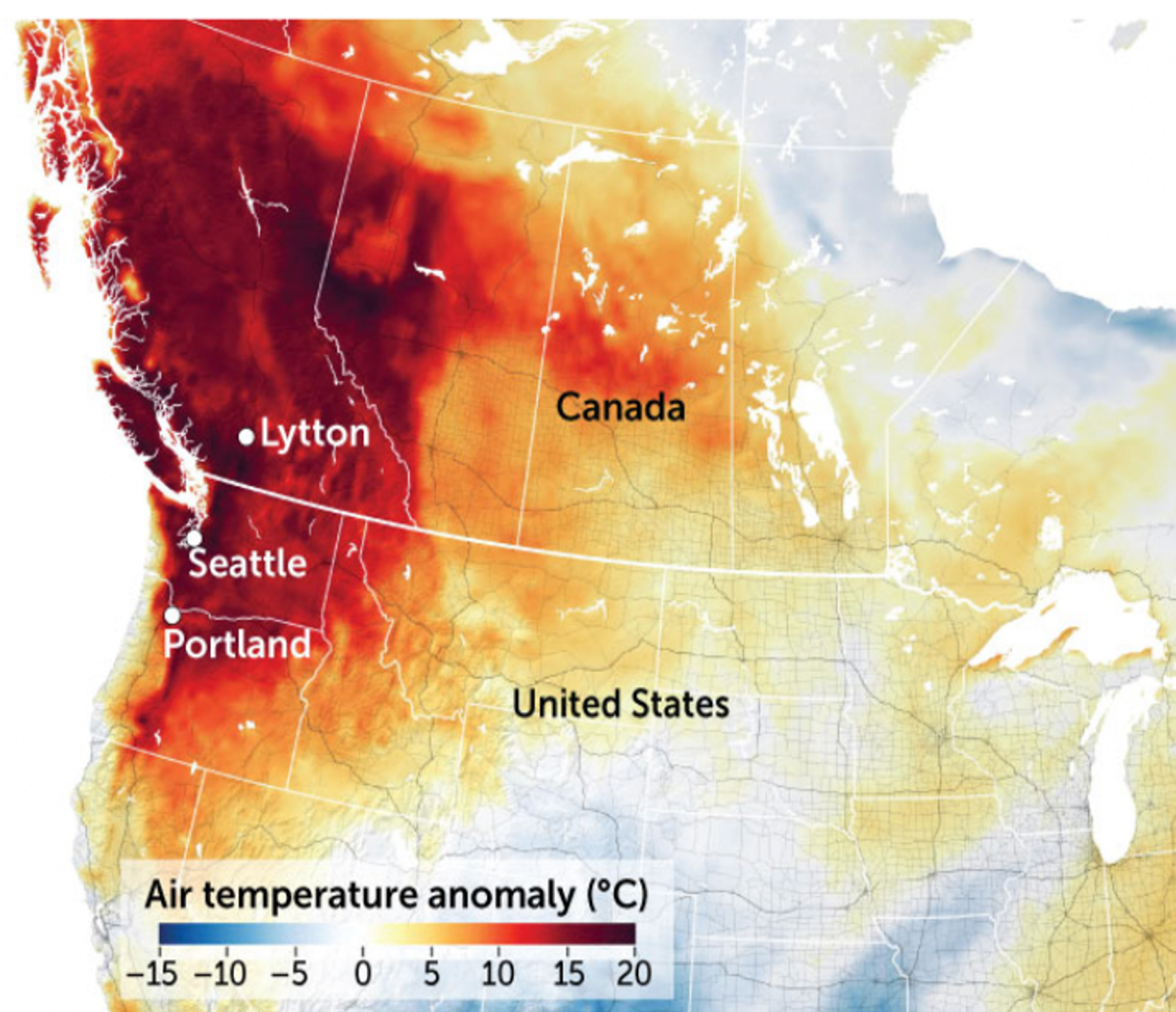
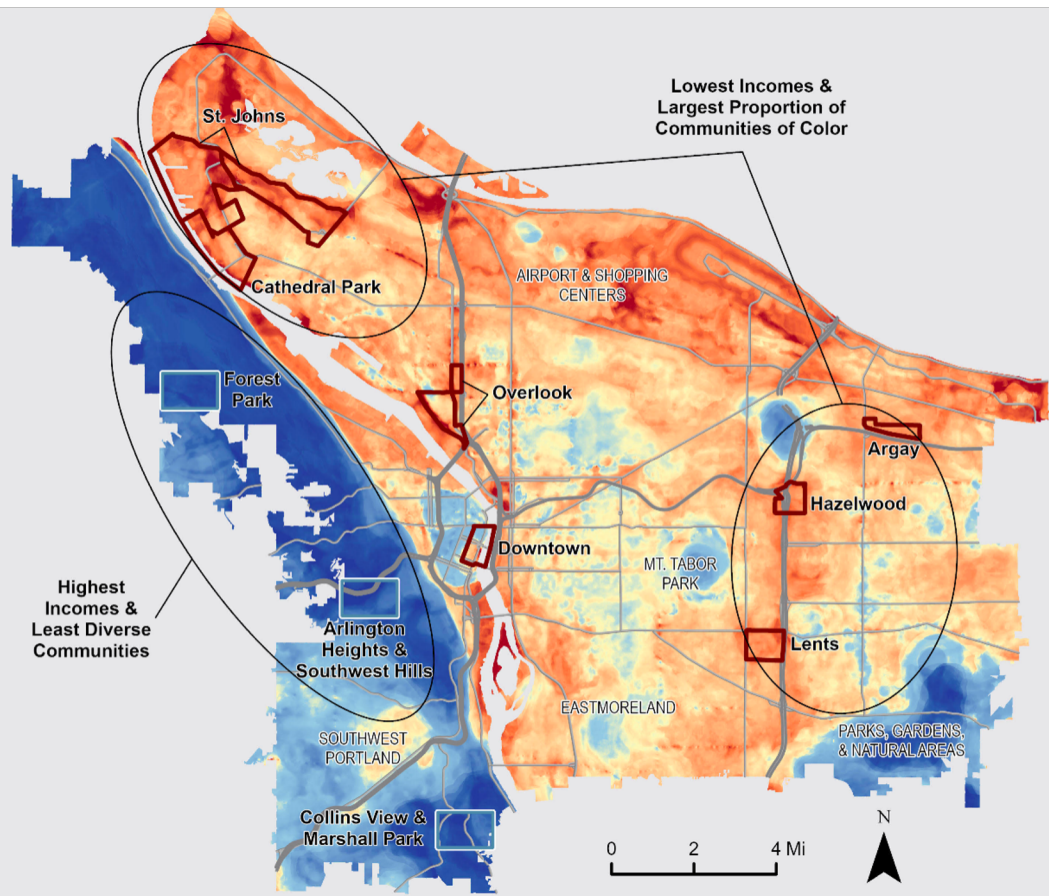


Inequitable Impacts from Extreme Heat in the Portland Metro Region

Vivek Shandas, PhD



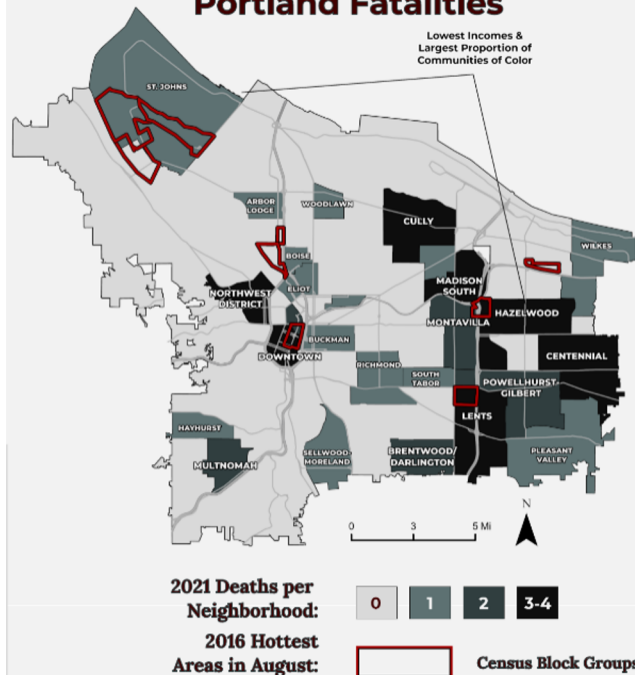
Disproportionate Impacts of Heat on Communities



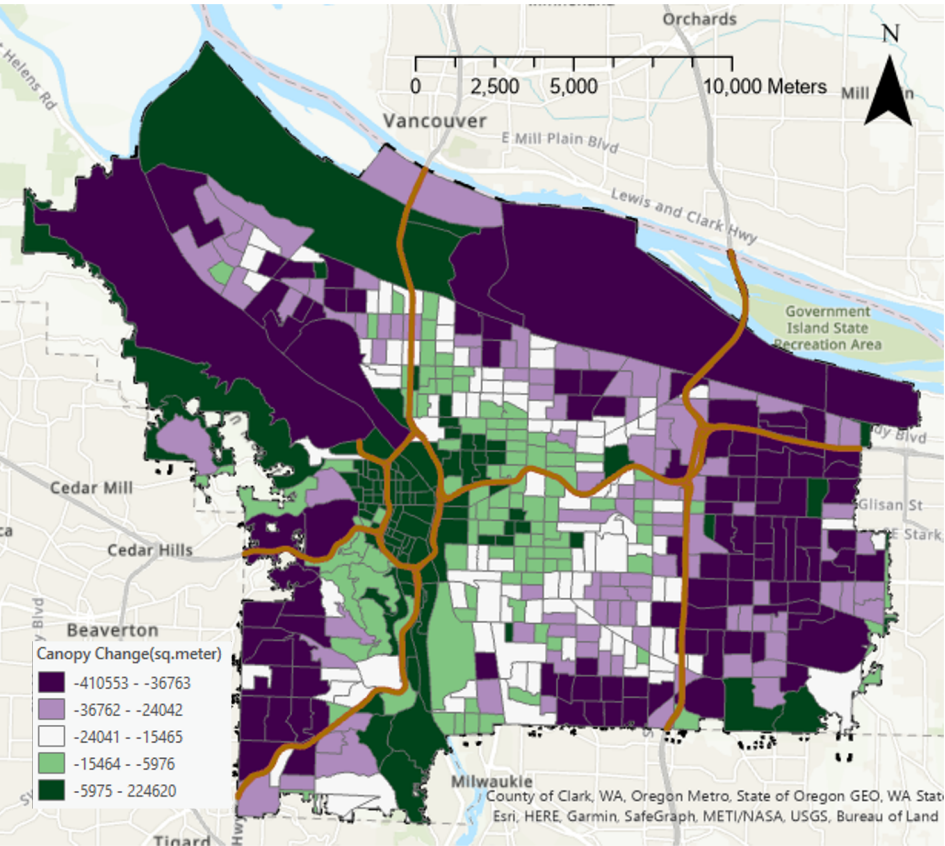
2021 Oregon Heatwave Death Toll

Confirmed Hyperthermia Deaths between June 24th to July 13th

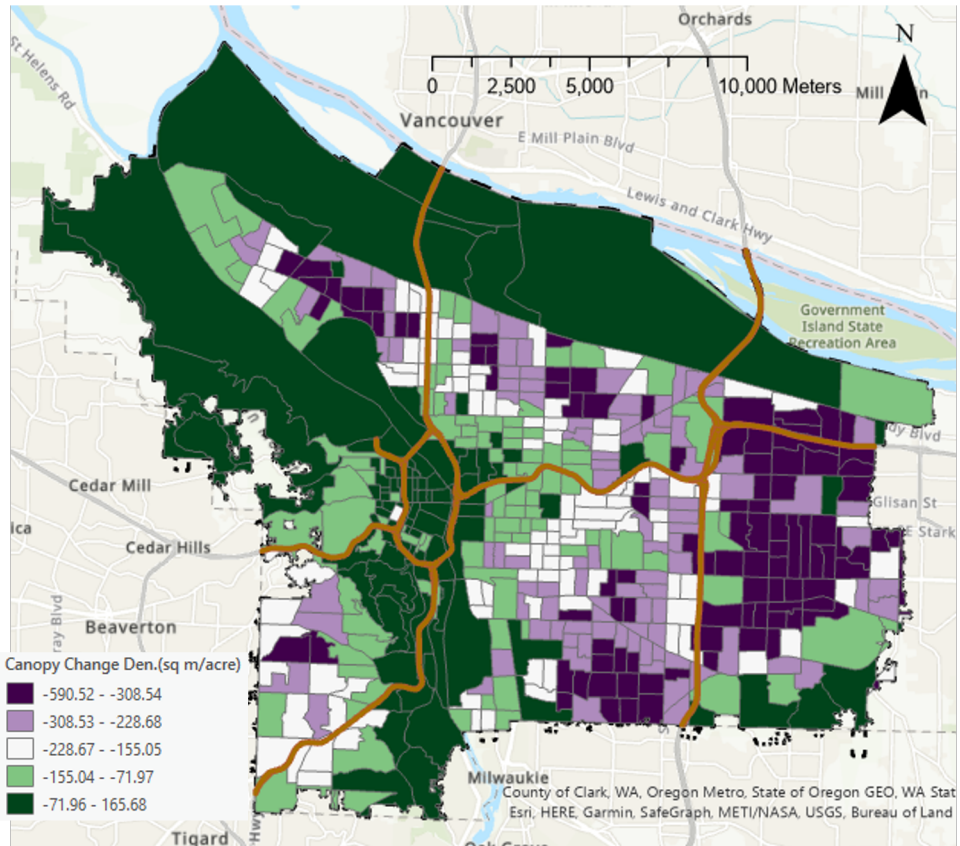
Portland Fatalities



Gain and Loss of Canopy: City of Portland ('14-'20)

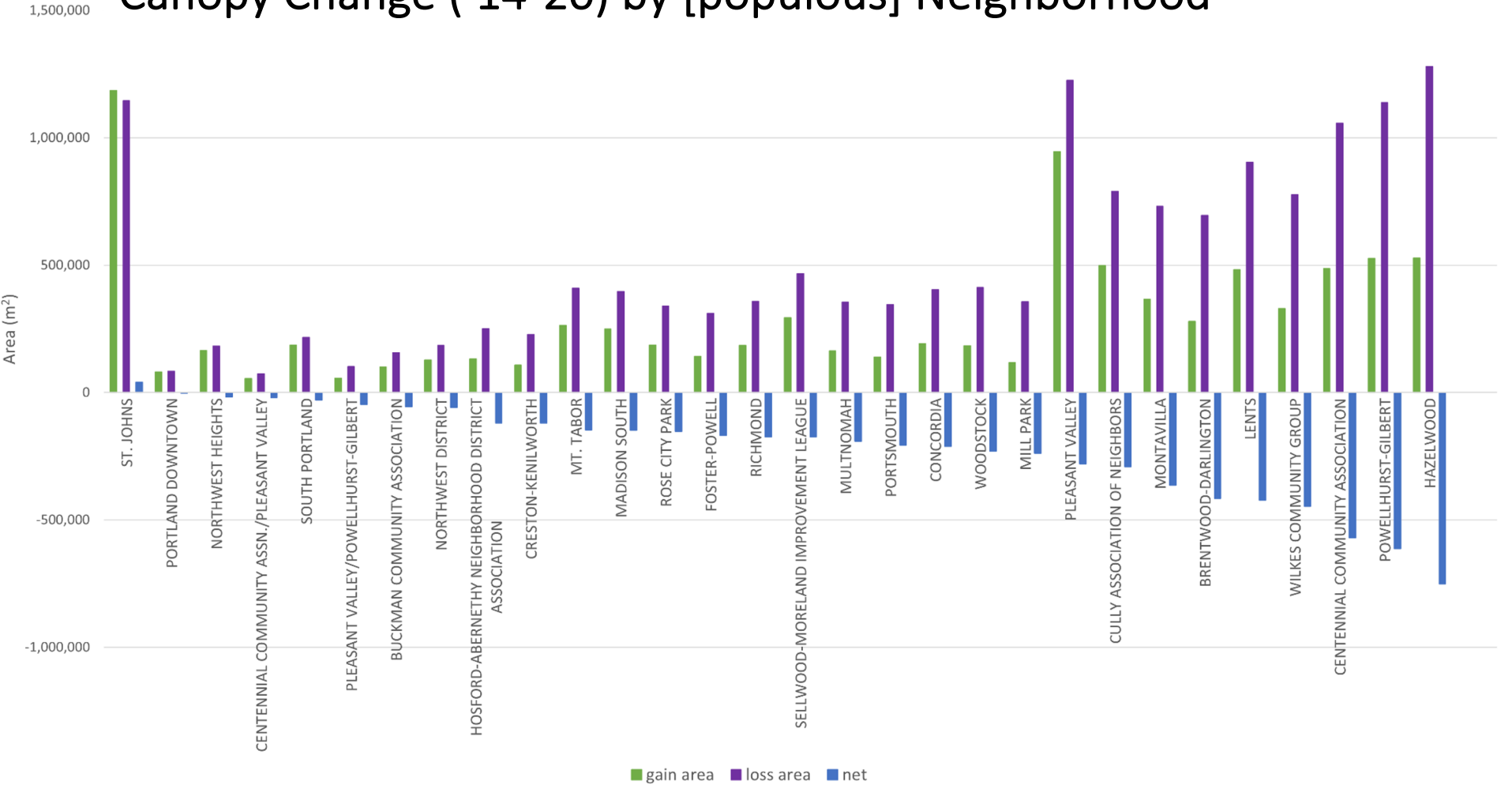


Canopy Change(Gain - Loss) (square meter)



Canopy Change Density (square meter /
acre)

Canopy Change ('14-20) by [populous] Neighborhood



Access to Air Conditioning and Extreme Heat

Primary Takeaways

- AC installations are not random in Portland – largely predictable by level of income in an area
- Higher levels of AC in the cooler NW/SW parts of the city, Beaumont/Grant Park, Mt. Tabor, Argay Terrace, and Pleasant Valley
- Lower levels of AC in Roseway, Sumner, Woodlawn, Kenton, Piedmont, Humboldt, Vernon, Eliot, Brentwood-Darlington
- Spatial analysis highlights inequities in access to cooling on a city-scale
- Urban-scale resilient cooling strategies* are needed