



HB 4077 : Environmental Justice for All

The Power of Data and Mapping

Amira Streeter, Governor Brown Policy Advisor

February 7, 2022



Overview of HB 4077: Environmental Justice for All

- **Takes the Environmental Justice Task Force (EJTF) into the next stage of its work**
 - Rename the EJTF into the Environmental Justice Council (EJC)
 - Expand membership to broaden representation
 - Bring more state agencies under the jurisdiction of the Council
- **Builds a mapping tool to visualize data and information to help increase understanding between agencies and environmental justice communities**
 - Directs the Environmental Justice Council to develop a process that will engage with communities across the state
 - Work in consultation with the Institute of Natural Resources and the DAS Geospatial Enterprise Office (GEO)
 - Community outreach and engagement with Environmental Justice Council and other interested parties

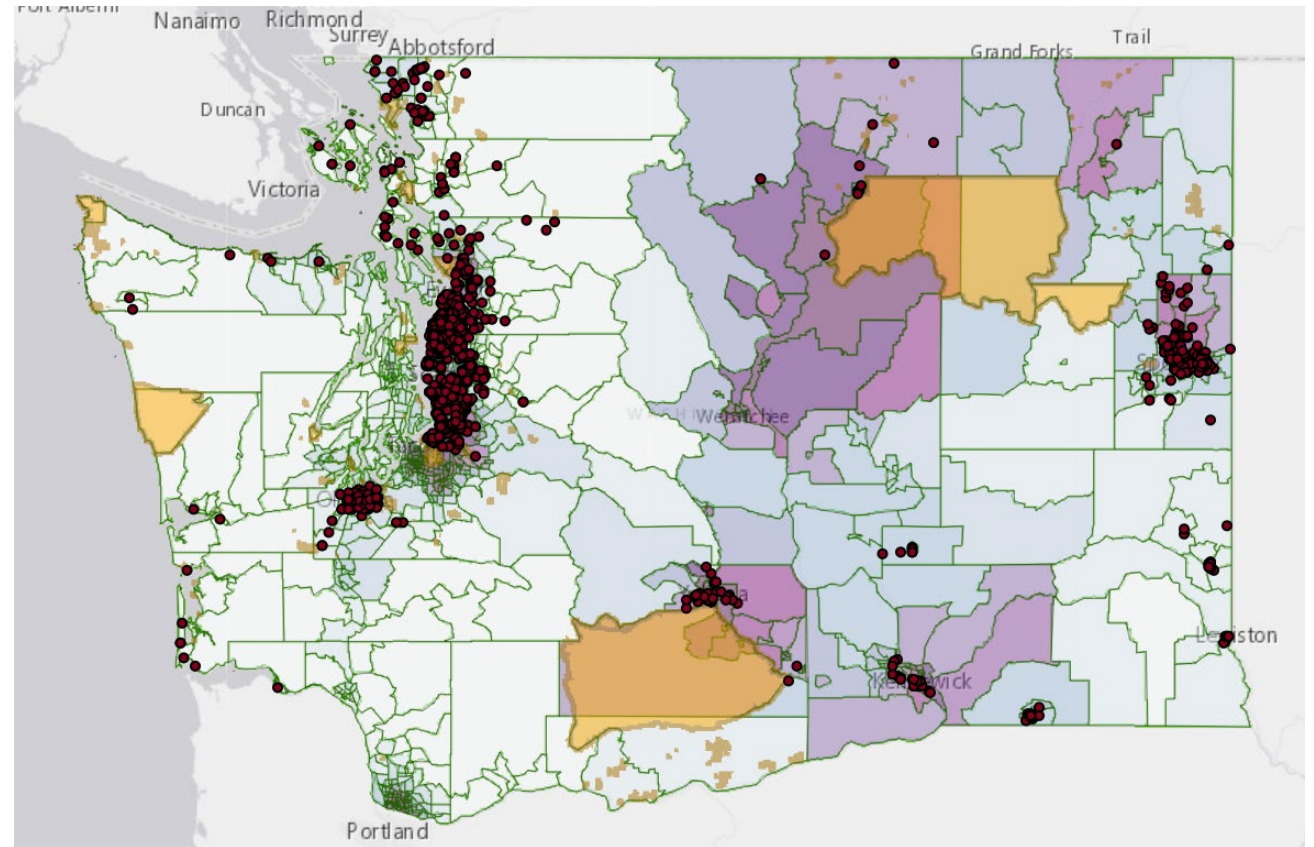


The Importance of Mapping and Data

- Informs outreach and engagement practices, and program implementation
- Built to identify underserved communities and support grant writing and community awareness efforts
- Ensure that investments go directly to benefit frontline communities most affected by poverty and pollution
- Seeks to create equitable recovery for all Oregonians facing challenges created by aging infrastructure, a frayed social safety net, natural disasters

Washington's Health Disparities Map

- Particulate matter data
- Tribal land boundaries
- Locations of adult care facilities





Purpose of the EJM Tool

1. Identify and help prioritize communities that need resource investments from state and federal funding
2. Enhance community engagement and outreach in state agency processes

Examples:

- Smoke impacts on people with asthma in wildfire prone areas to prioritize access to filtration devices and health services
- Renewable energy development in areas with low energy access
- Clean Water Revolving fund to allocate funding received from federal government to the communities that need it the most
- Implement planning where food deserts and lack of public transit persist to serve communities with low incomes



Process to Create the EJM Tool

- EJC will drive the Community Engagement Process to incorporate community input
- EJC will work with DAS-GEO and INR to develop the methodology for data collection and agencies will provide staff support
- INR will collect data and build map on Oregon Explorer platform
- Other agencies will engage to fill gaps in data collection
- Community gives input into the types of data and uses of the tool