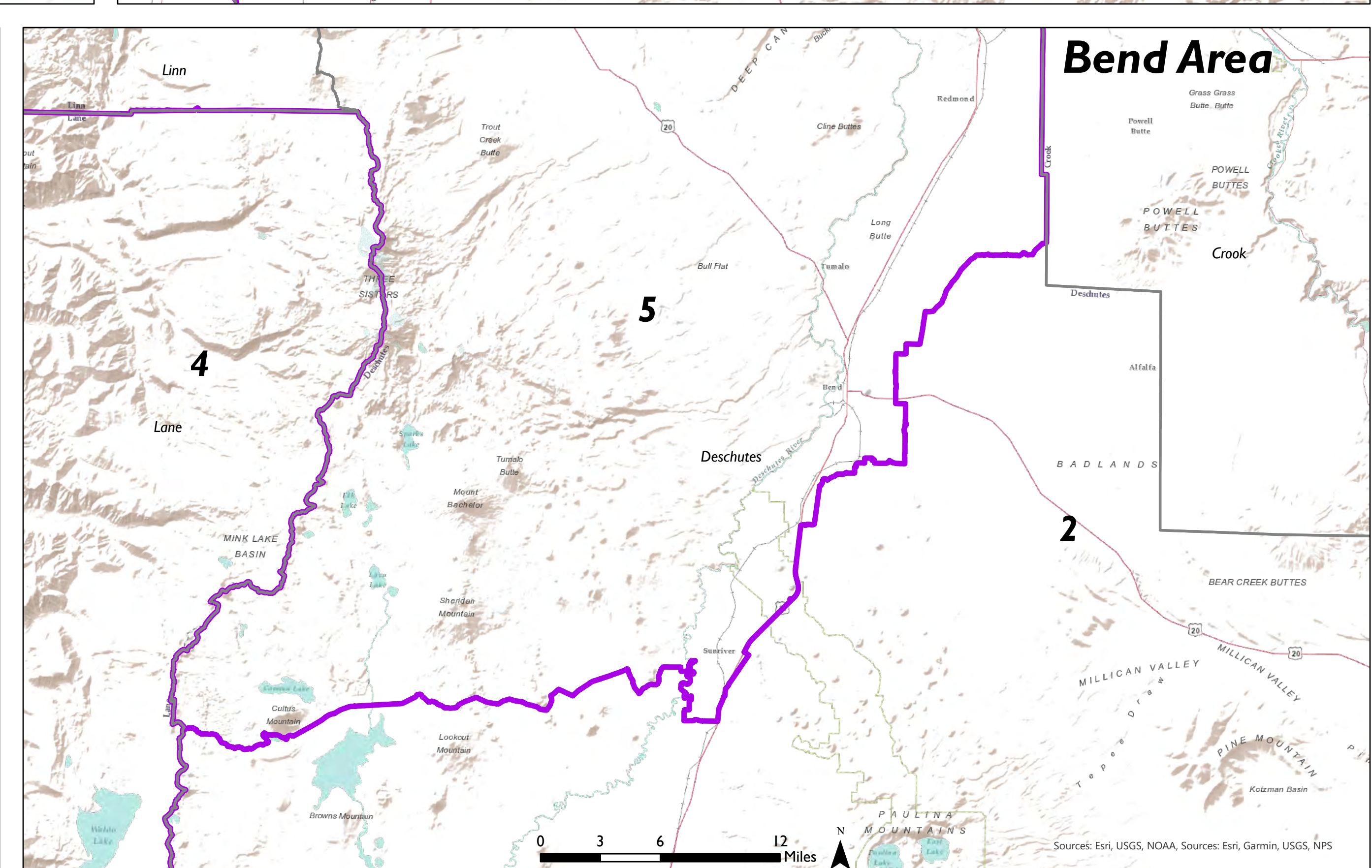
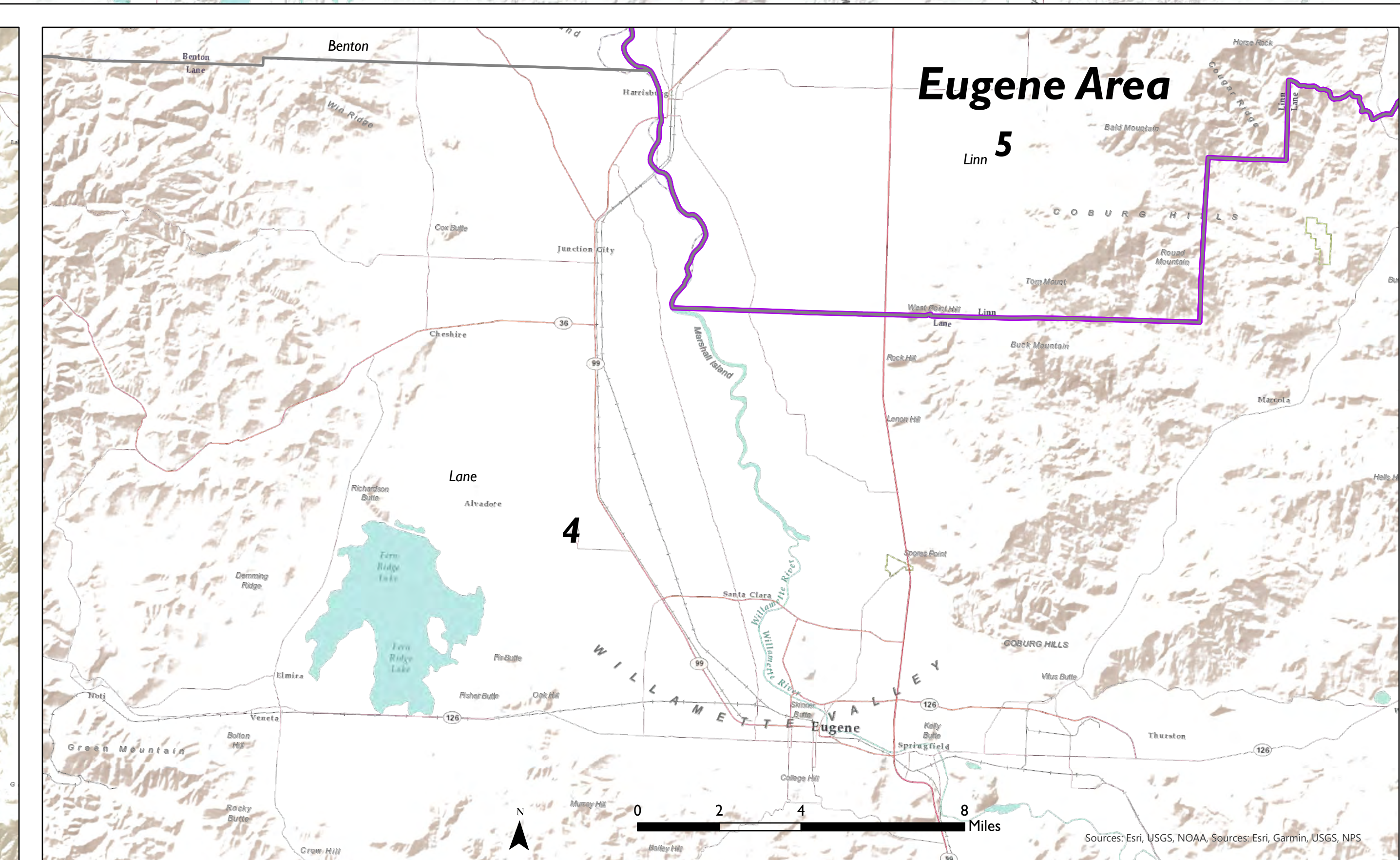
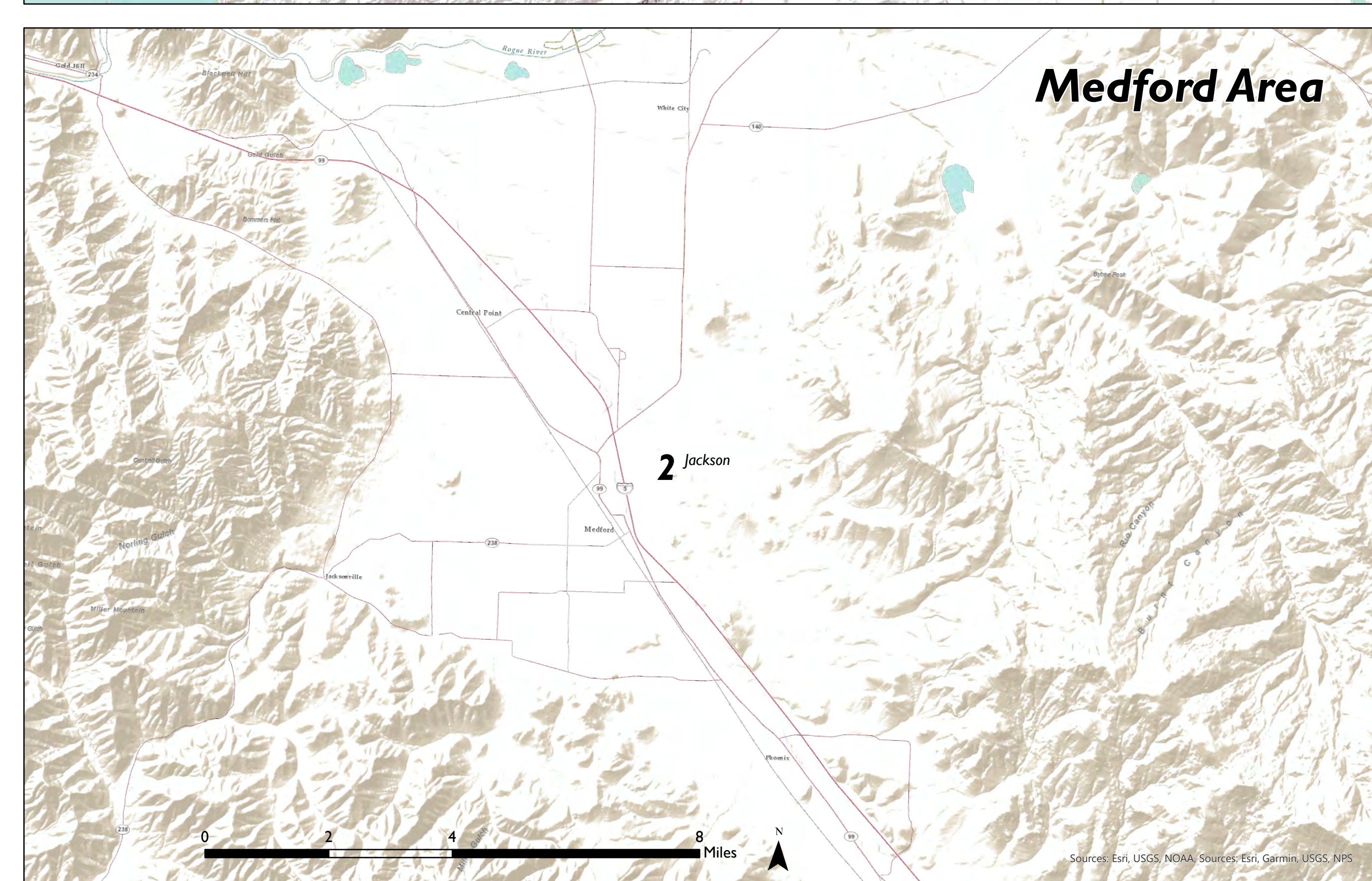
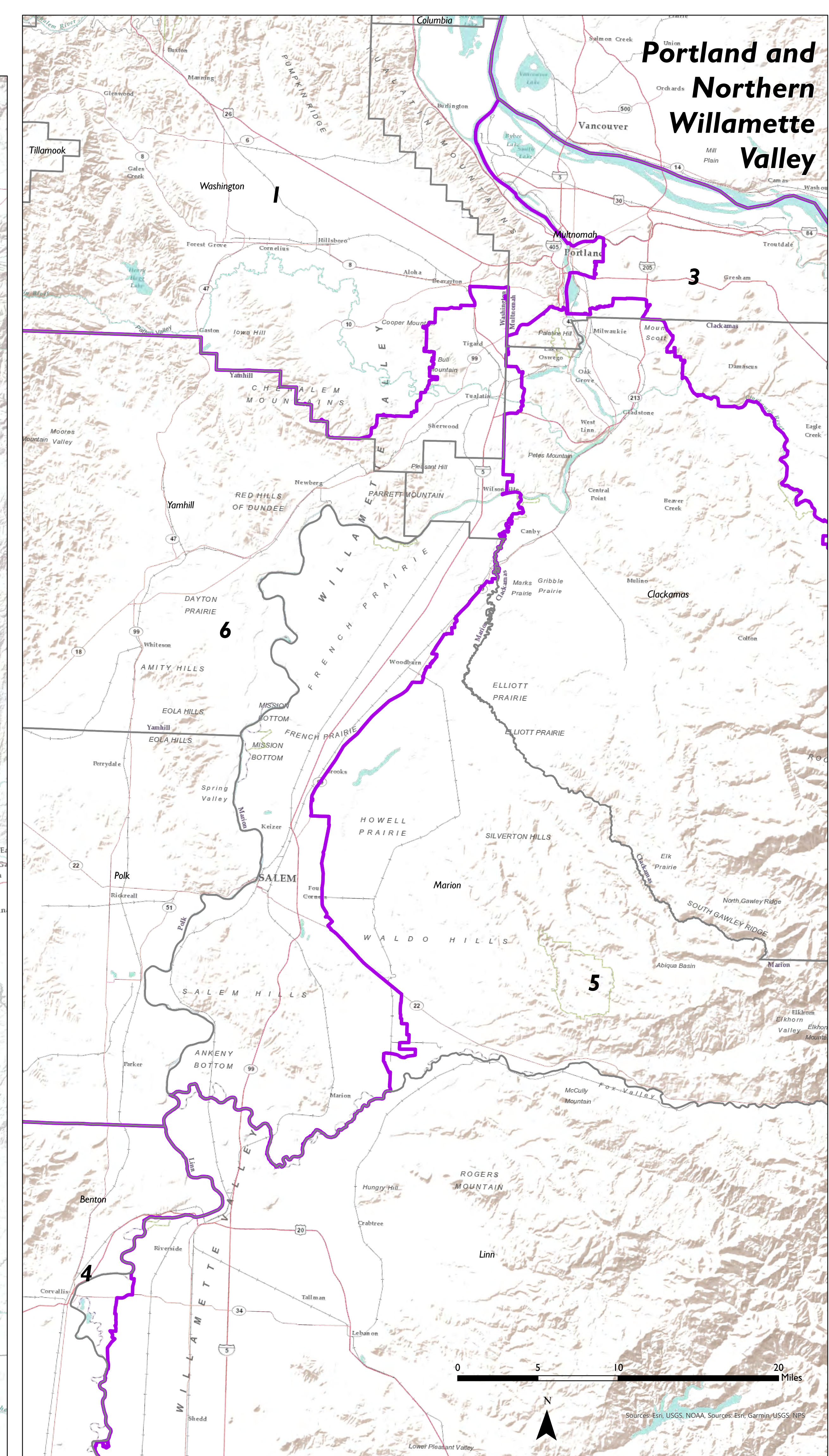
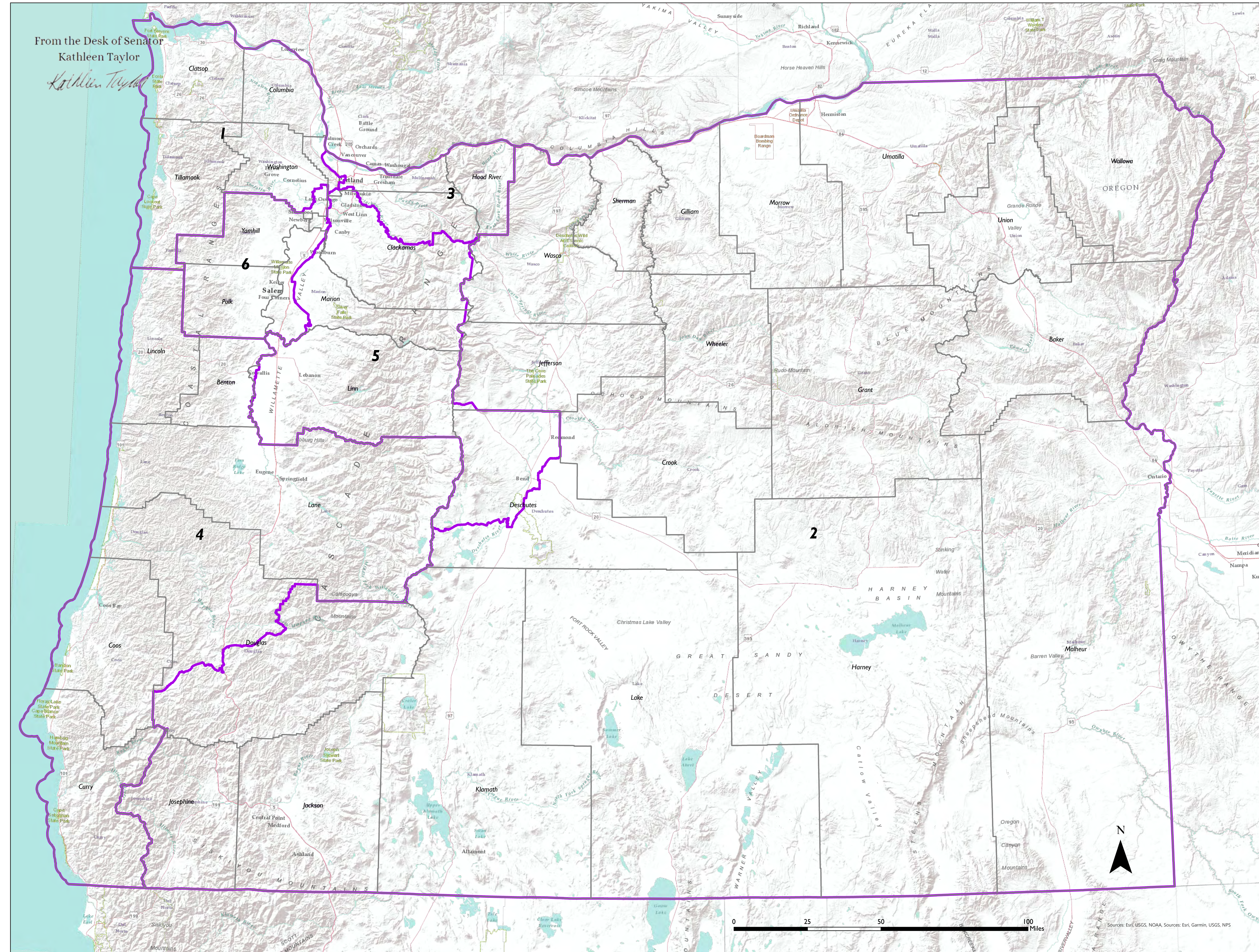


SB 881-3 Amendment - Oregon Congressional Map

From the Desk of Senator
Kathleen Taylor

Kathleen Taylor



□ Counties ■ Congressional Districts (Amendment 882-3)

District proposal from committee; County shapefiles from US Census Bureau; World Terrain Basemap from ESRI; Map created September 2021 by LPRO