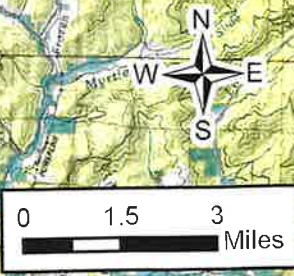


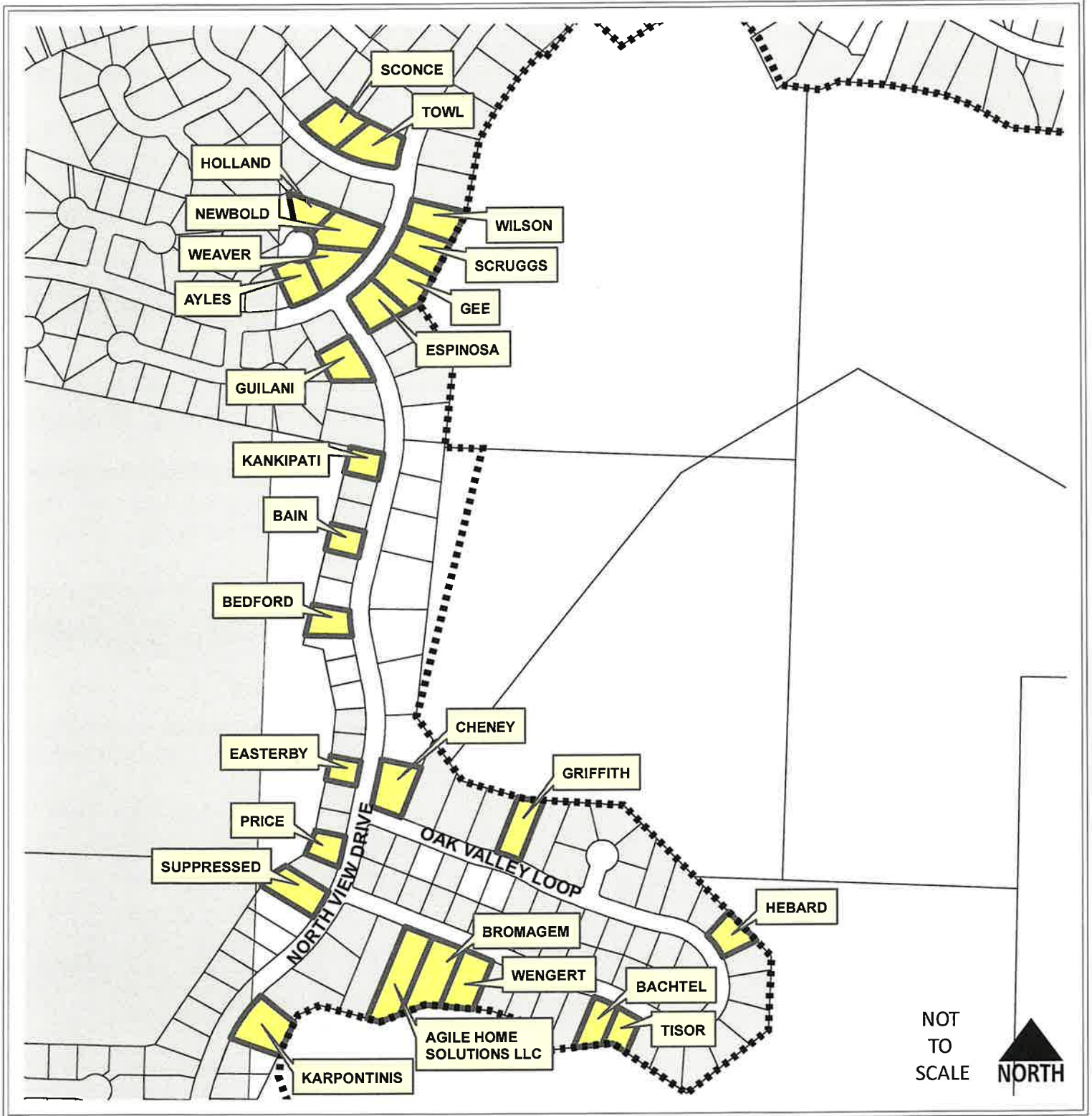
**Legend**

- ★ DC #2 Stations
- 7 Mile Buffer
- 5 Mile Buffer
- DC #2 Fire District
- City\_Limits



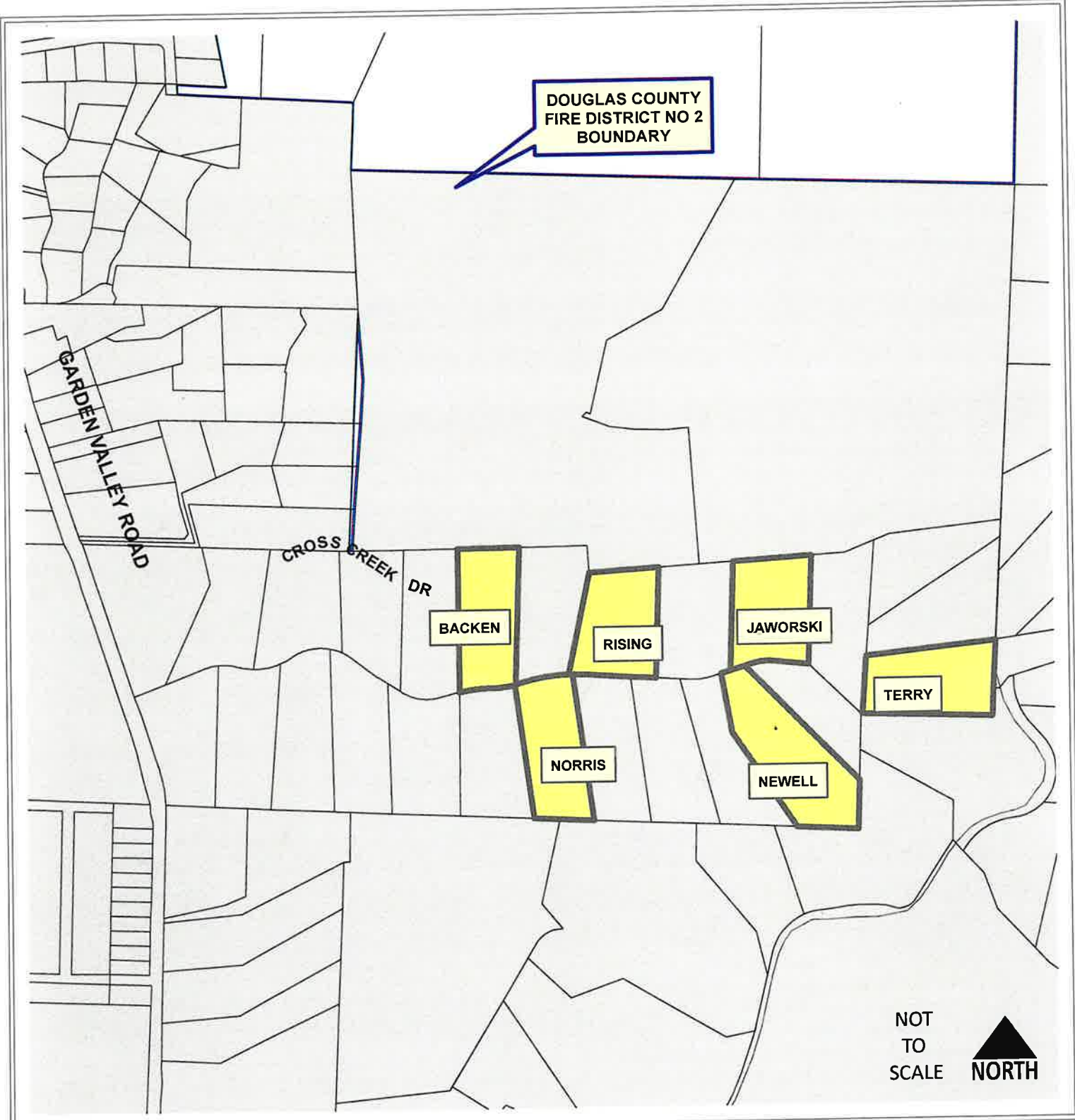
# NORTH VIEW DRIVE & OAK VALLEY LOOP

VICINITY MAP  
T267S R5W





## Legend

-  Improved
-  Douglas County Fire District No. 2

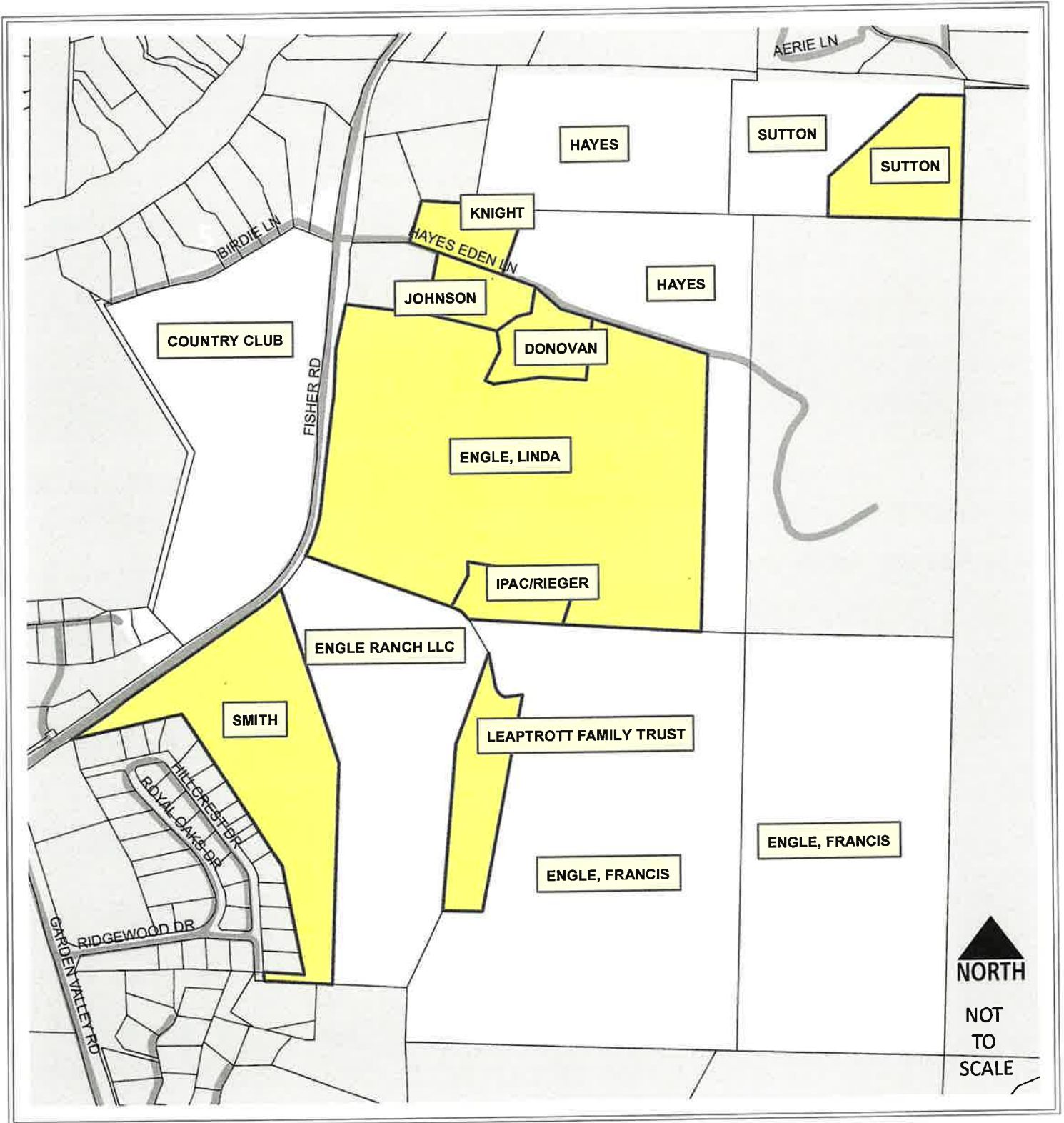


**LEGEND**

-  Improved
-  Douglas County Fire District No. 2

# HAYES EDEN ROAD

VICINITY MAP  
T26S R06W SEC 34



## LEGEND

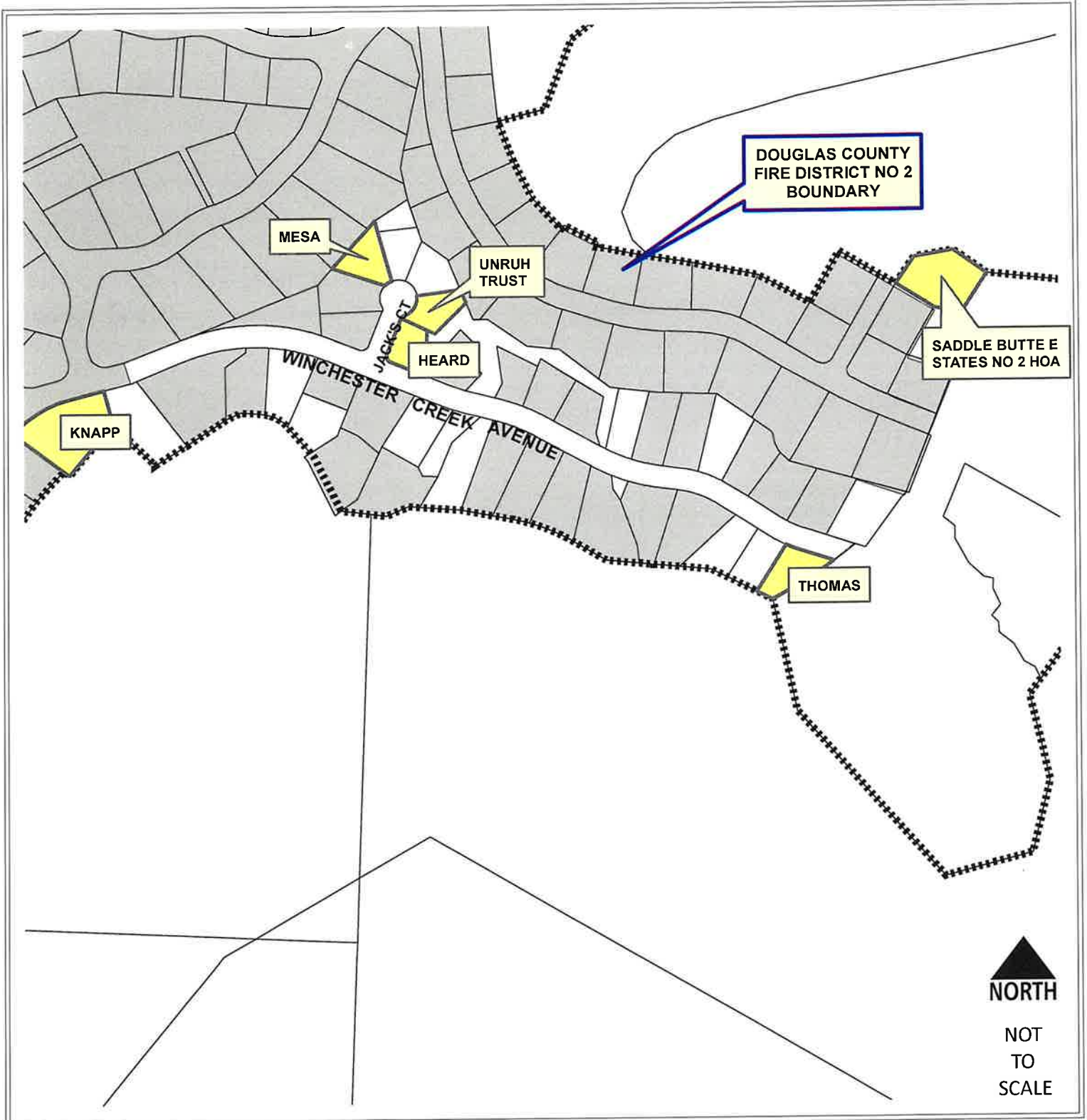
 IMPROVED

 DOUGLAS COUNTY FIRE DISTRICT NO.2


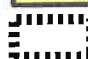
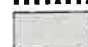
DOUGLAS COUNTY PLANNING DEPARTMENT

# WINCHESTER CREEK AVENUE JACK'S CT

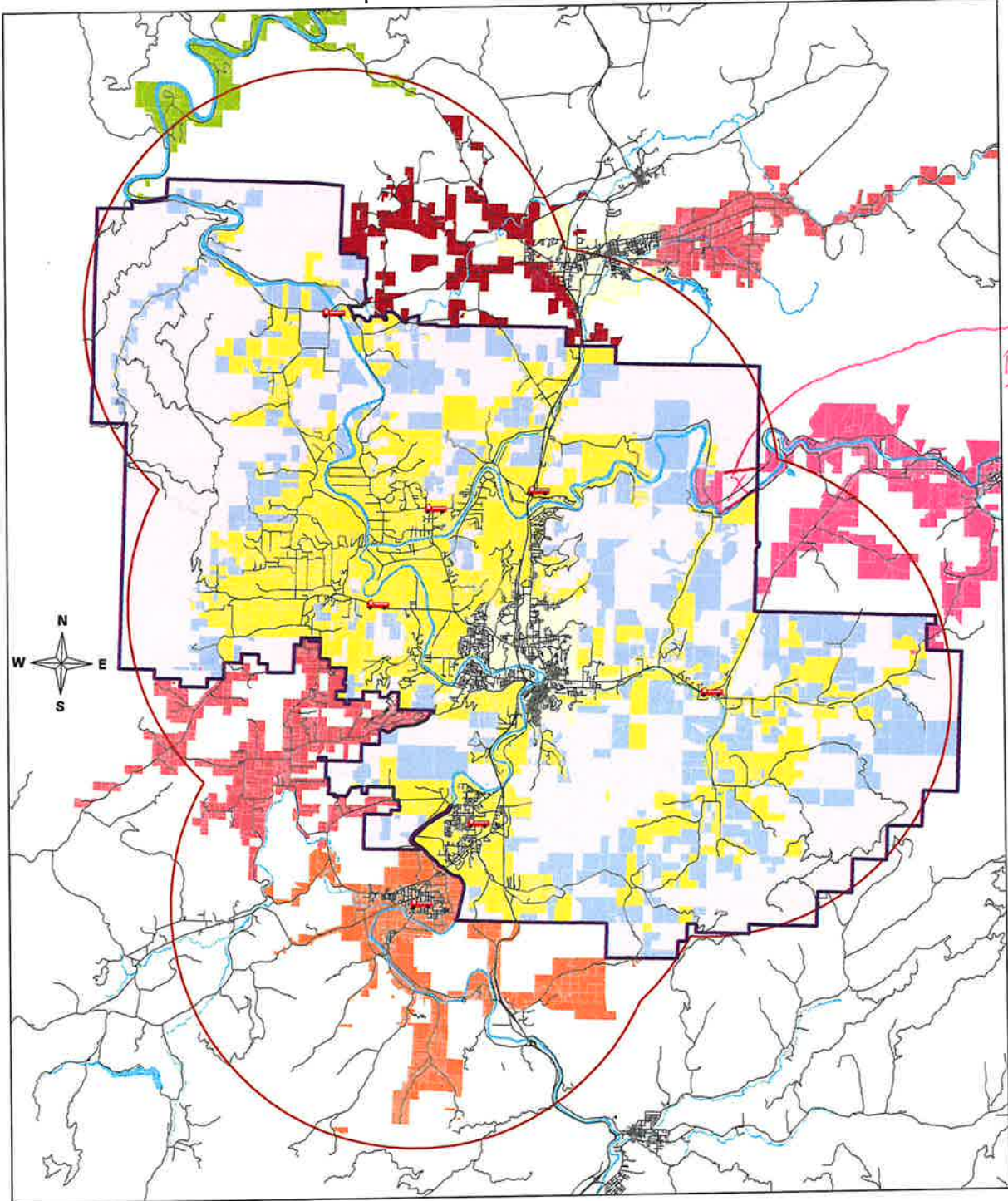
VICINITY MAP  
T27S R6W SEC's 2 & 3



## LEGEND

-  Improved
-  UGB
-  Douglas County Fire District No. 2

# Proposed Fire District 2 Boundary



*Please Remove This little piece from our proposed Area*



## Legend

	FireStation		Douglas County #2
	Roads		Calapooya
	7MileBuffer		Elkton
	ProposedBoundary		Fair Oaks
	ParcelsProposedBoundary		Glide
	ImprovedLandsProposedBoundary		Kellogg
	RoseburgSutherlin		Lookingglass
	Parcels		Winston-Dillard
	Water		

## Proposed Boundary Data

Asses Parcel Value \$337,527,340  
 Improvement Value \$222,150,477

## Existing Fire District 2 Data

Asses Parcel Value \$1,808,735,484  
 Improvement Value \$1,311,938,603