



YAKIMA RIVER BASIN INTEGRATED PLAN

March 16th, 2021



Danielle Squeochs, PhD, LHg, PE
Hydrologist
Yakama Nation Water Resource Program

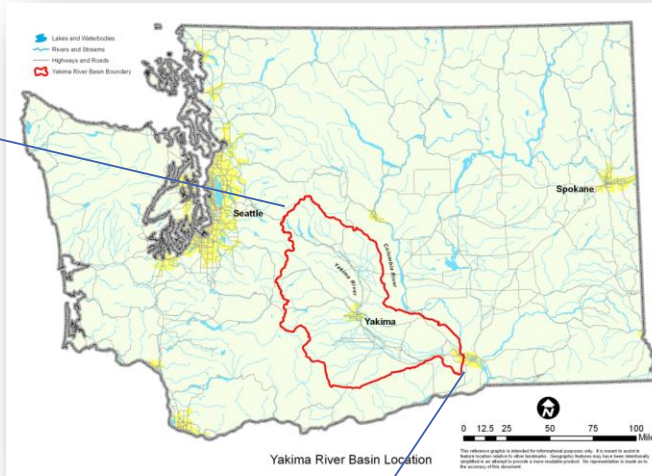
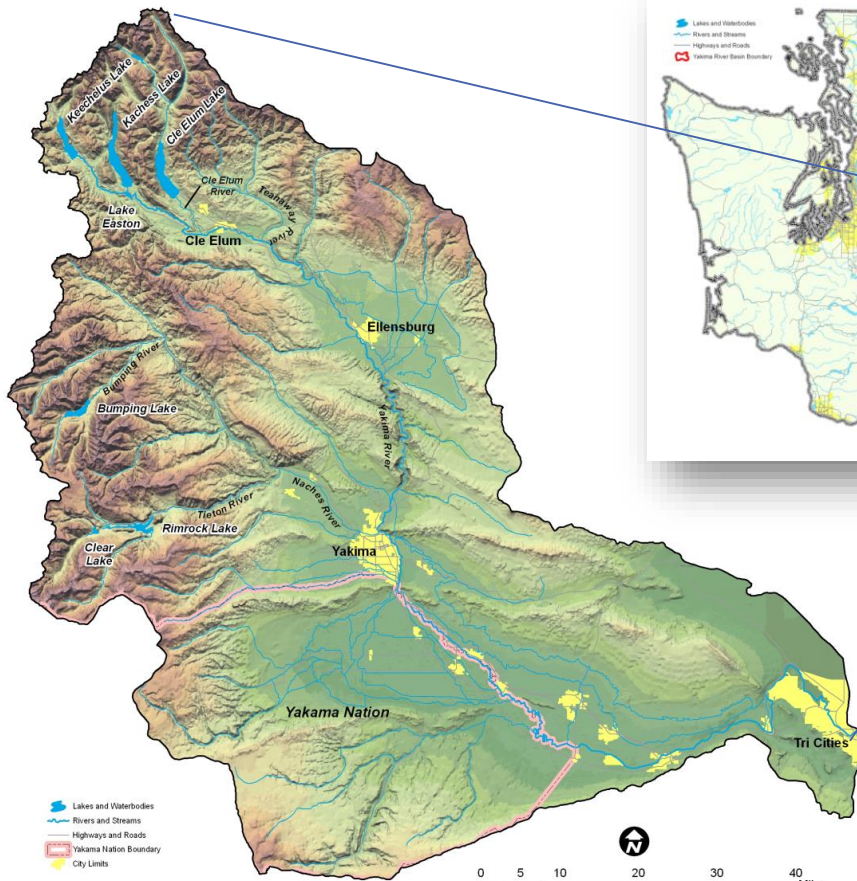


The Treaty of 1855

- Treaty reserved 1.4 million acre homeland (Yakama Reservation)
 - Water rights for irrigation, instream flow, etc
- Treaty guaranteed the Yakama people perpetual rights to hunt, fish, etc. on 10 million acres ceded to US
 - Acquavella confirmed Time Immemorial water right for instream flow for fish and other aquatic life



The Yakima River Basin Overview



Basin size: 6,155 sq. miles with 464,000 irrigated acres

\$4.5 billion agriculture economy

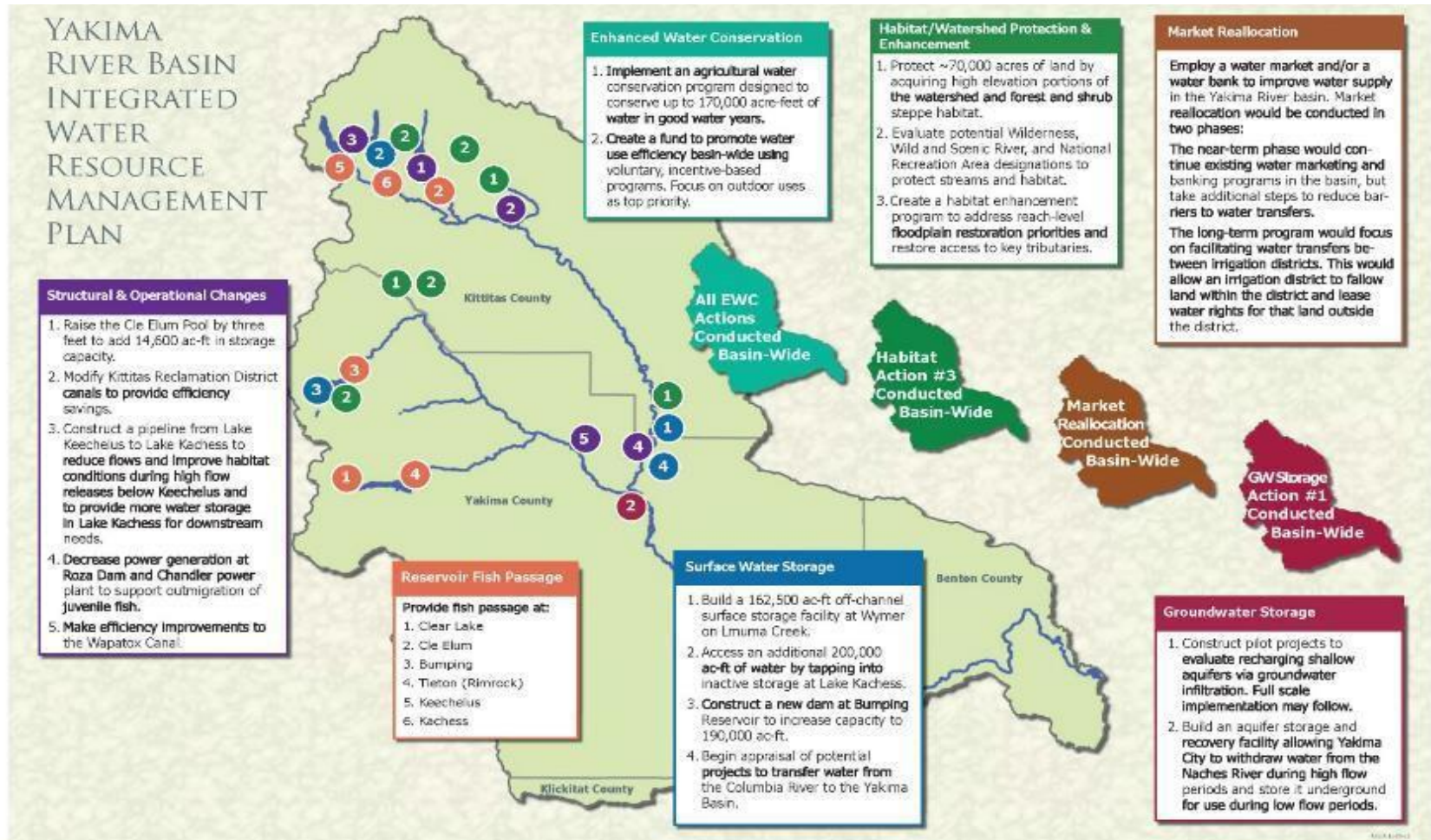
Historically, second only to Snake River in supporting Columbia Basin salmon and steelhead runs

This reference graphic is intended for informational purposes only. It is meant to assist in feature location relative to other landmarks. Geographic features may have been intentionally simplified in an attempt to provide a more readable product. No representation is made as to the accuracy of this document.

Yakima Basin Integrated Plan Goals

- Restore and enhance environment, fish and wildlife, including fish passage at federal dams
- Improve water supply during drought years (70% proratable supply)
- Provide for efficient and adaptable water supply management
- Contribute to sustainable economy and environment

The Seven Elements



YRBWEP Workgroup Members

Federal Agencies

- Bureau of Reclamation
- National Marine Fisheries Service
- U.S. Fish and Wildlife Service
- U.S. Forest Service
- U.S. Army Corps of Engineers

Yakama Nation

Washington State Agencies

- Department of Ecology
- Department of Agriculture
- Department of Fish and Wildlife
- Department of Natural Resources

Local Governments

- Benton County
- Kittitas County
- Yakima County
- City of Yakima

Irrigated Agriculture

- Kennewick Irrigation District
- Kittitas Reclamation District
- Roza Irrigation District
- Sunnyside Valley Irrigation District
- Yakima-Tieton Irrigation District

Other Stakeholders

- American Rivers
- Yakima Basin Fish & Wildlife Recovery Board
- Yakima Basin Storage Alliance
- Trout Unlimited

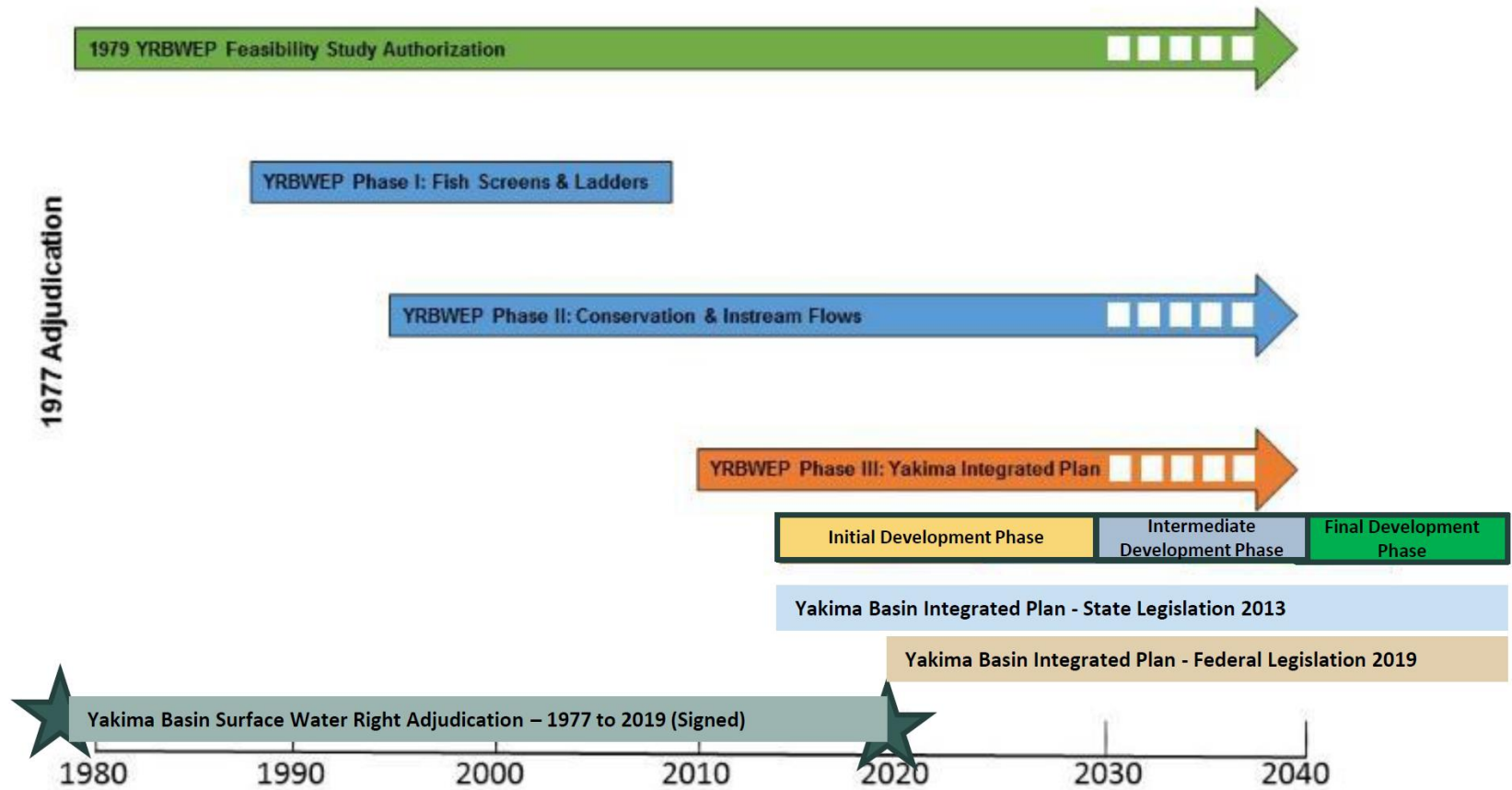


Yakima Basin Integrated Plan



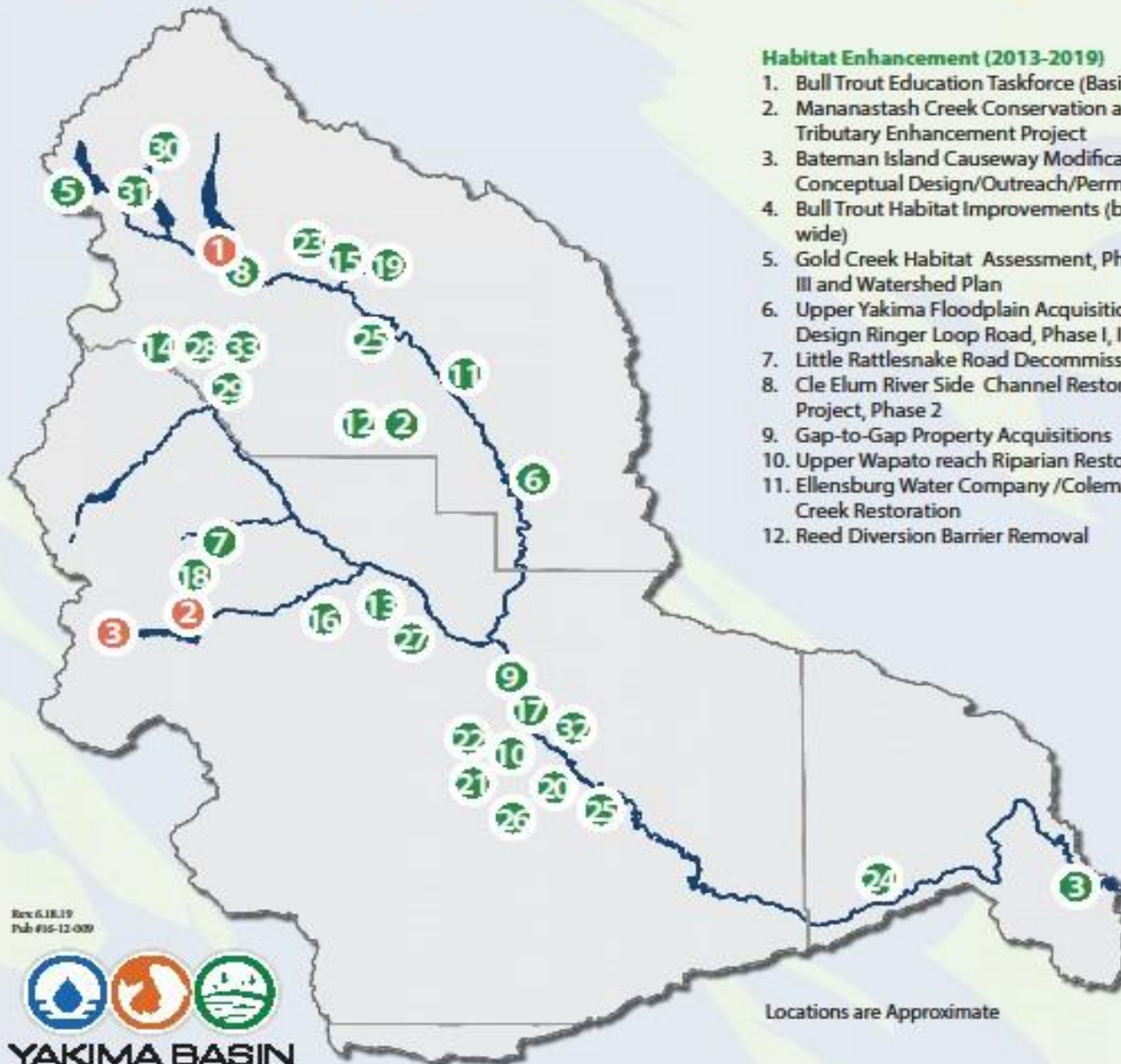
- 1977: Basin-wide surface water adjudication
- 1999: State stops issuing unmitigated groundwater rights
- 2001: Black Rock Reservoir Studies initiated by Reclamation
- 2007: Yakama Nation and Roza Irrigation District wrote joint comment letter on Black Rock Reservoir study suggesting package of measures and integrated approach
- 2009 to 2011: The Yakima Basin Integrated Plan Work Group forms and endorses integrated package
- 2013: Governor Inslee introduces YBIP legislation which passes legislature nearly unanimously
- 2019: Federal legislation passes authorizing initial phase

Yakima River Basin Water Enhancement Project Timeline



Yakima Basin Integrated Plan Initial Development Phase

Map 2 - Fish Passage and Habitat Enhancement Projects



Habitat Enhancement (2013-2019)

1. Bull Trout Education Taskforce (Basin Wide)
2. Mananastash Creek Conservation and Tributary Enhancement Project
3. Bateman Island Causeway Modification Conceptual Design/Outreach/Permitting
4. Bull Trout Habitat Improvements (basin wide)
5. Gold Creek Habitat Assessment, Phase I, II, III and Watershed Plan
6. Upper Yakima Floodplain Acquisition and Design Ringer Loop Road, Phase I, II
7. Little Rattlesnake Road Decommissioning
8. Cle Elum River Side Channel Restoration Project, Phase 2
9. Gap-to-Gap Property Acquisitions
10. Upper Wapato reach Riparian Restoration
11. Ellensburg Water Company /Coleman Creek Restoration
12. Reed Diversion Barrier Removal
13. Trout Meadows Acquisition /Enhancement
14. Little Naches Land Acquisition
15. Teanaway Valley Farm Acquisition and Restoration
16. Cowiche Easement/Design
17. Gap-to-Gap Outfall Relocation and Levee Removal Design and Restoration
18. South Fork Tieton Bull Trout Passage Feasibility and Design, Phase I, II, III
19. Teanaway/Indian Creek Restoration and Large Wood Replacement
20. Yakima Rivermile 89.5 Levee Breach
21. Island Road Floodplain Reconnection - Toppenish Creek
22. Toppenish Creek - Pop Pom Road
23. Teanaway Habitat Restoration and Fencing, Phase I, II, III
24. Lower River Thermal Refuge
25. Wapato reach Riparian Project
26. Yakima Basin Tributary Restoration (Starvation Flats, Ahtanum, Toppenish)
27. Naches River and Cowiche Creeek Restoration
28. Little Naches Large Wood Project
29. Fawn Creek Culvert Replacement
30. Kachess River Passage and Floodplain Assessment
31. Box Creek Large Wood Replenishment
32. Donald Wapato Bridge Restoration
33. Little Naches River Watershed Aquatic Restoration

Fish Passage

1. Cle Elum Dam
2. Tieton (Rimrock) Dam
3. Clear Creek Dam

Locations are Approximate

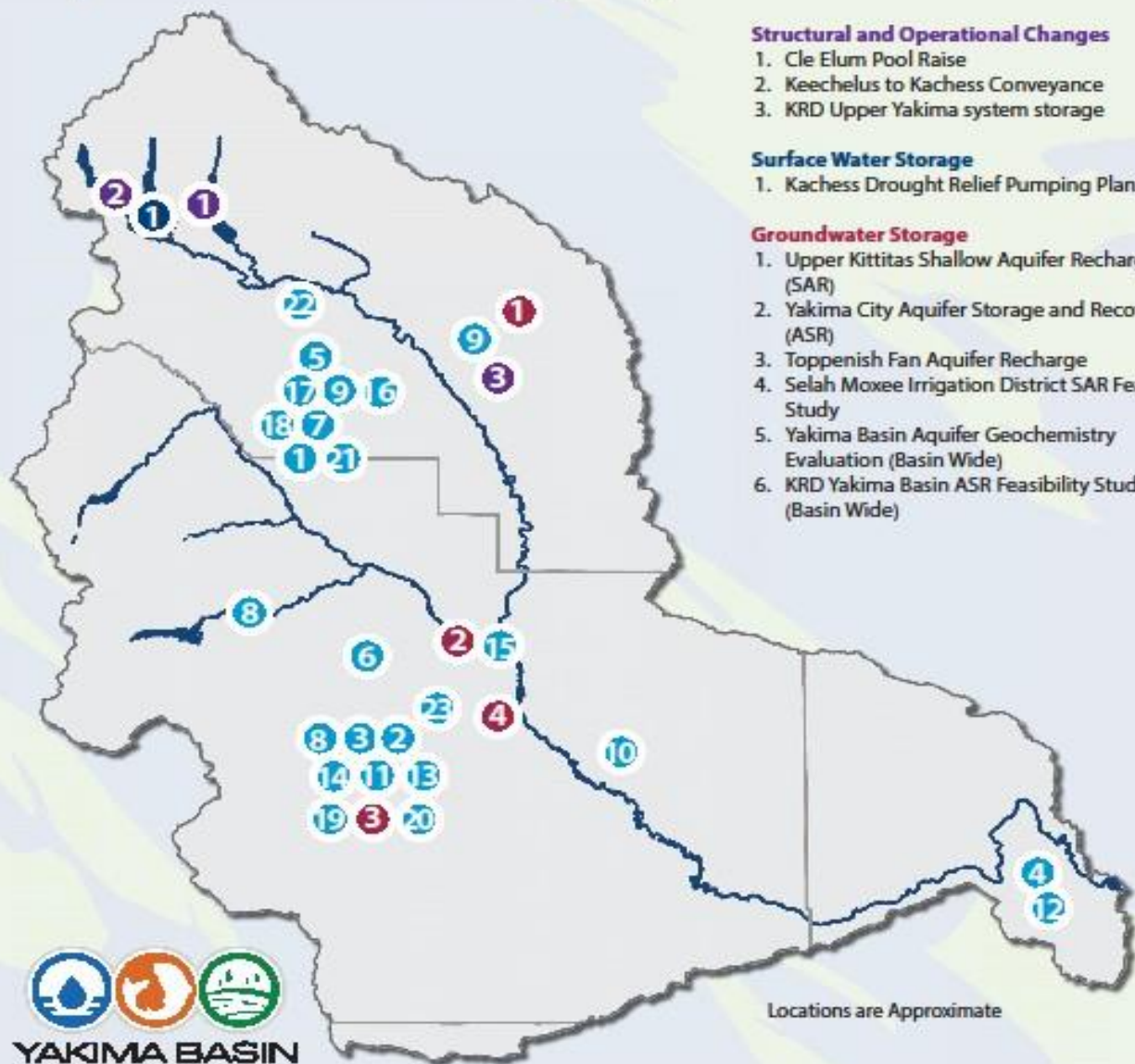
Rev. 6/18/19
Pub #16-12-009



To ask about the availability of this document in a format for the visually impaired, call Office of Columbia River at 509-575-2490. Persons with hearing loss can call 711 for Washington Relay Service. Persons with a speech disability can call 877-803-6344.

Yakima Basin Integrated Plan Initial Development Phase

Map I - Conservation, Storage, Operations, and Water Market Projects



Structural and Operational Changes

1. Cle Elum Pool Raise
2. Keechelus to Kachess Conveyance
3. KRD Upper Yakima system storage

Surface Water Storage

1. Kachess Drought Relief Pumping Plant

Groundwater Storage

1. Upper Kittitas Shallow Aquifer Recharge (SAR)
2. Yakima City Aquifer Storage and Recovery (ASR)
3. Toppenish Fan Aquifer Recharge
4. Selah Moxee Irrigation District SAR Feasibility Study
5. Yakima Basin Aquifer Geochemistry Evaluation (Basin Wide)
6. KRD Yakima Basin ASR Feasibility Study (Basin Wide)

Agricultural and Municipal Conservation (2013-2019)

1. KRD 13.6, 13.8 Lateral Piping Project
2. Wapato Irrigation Project (WIP) Piping Lateral 4-414C
3. WIP Piping Satus East Lateral E73
4. Kennewick Irrigation District (KID) Division IV Lining
5. Manastash Creek Sprinkler Conversions
6. Yakima-Tieton ID Diversion Relocation Feasibility Study
7. Manastash – Consolidated Pipeline & Manastash Water Ditch Association (MWDA) Pipeline Construction
8. WIP Piping of Unit 2 L672 and Headworks Rebuild
9. KRD North Branch Canal Lining
10. Roza Canal Lining Phases I, II, III, IV
11. WIP Lining of Unit 2 (167+20 to 173+80)
12. KID Reregulation Reservoir Design
13. WIP Unit 2 Upper Dam Rebuild and Lower Dam Removal
14. WIP Water Conservation Plan
15. City of Yakima Xeriscape Demonstration Project
16. Reed Pipeline Design Manastash Creek
17. Anderson Diversion Irrigation Water Acquisition
18. KRD South Branch Canal Lining, Phases I and II
19. WIP Unit 2 West Piping
20. WIP Unit 2 West Lining
21. KCCD Irrigation Efficiency Improvements
22. KRD Upper Tributary Supplementation
23. WIP Track D Lateral Pipeline
24. Heritage Gardens Municipal Conservation Program (Basin Wide)

Water Bank/Exchange Programs

1. KRD/TU Yakima basin Water Market Structure and Strategic Development (Basin Wide)

Locations are Approximate

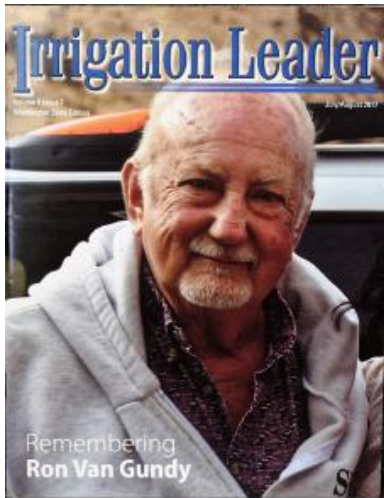
In Summary

- 1994 Federal Legislation – Authorizes Reclamation to work with Ecology, Irrigation Districts and Yakama Nation to Conserve water, provide Habitat Restoration and Tributary Enhancement.
- 2013 State Legislation – Authorizes Ecology to implement Integrated Plan in coordination with Reclamation and Yakama Nation and fund up to ½ of the Integrated Plan.
- 2019 Federal Legislation – Authorizes Reclamation to implement the Initial Phase of Integrated Plan with Ecology, Yakama Nation and others.

Why it is working

“I can live with what you want if you can live with what we want”

- Not the usual “compromise”
- Adversaries become advocates (even Huskies and Cougars)
- Many dedicated participants →



“We can’t do it without each other”





Honor. Protect. Restore.

